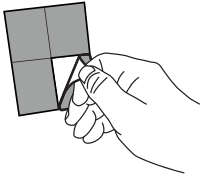


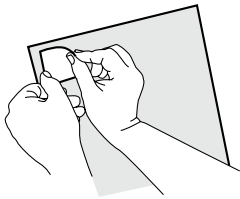
HOW TO INSTALL TILES

Thank you for your felt right order. We want to ensure you have the best possible installation experience. Before beginning, please take a moment and watch our 3 minute installation video.



1. PEEL CORNER

Peel one of the adhesive tabs from the branded liner.

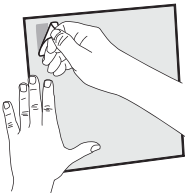


2. PLACE AND PRESS

Firmly press and rub the whole tab, including the edges, onto the back side of the tile. Place the tabs according to the **Tab Placement**.

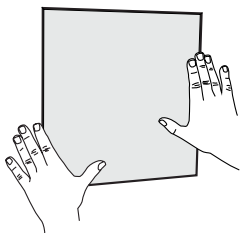


Ensure the adhesive tabs are firmly pressed and rubbed onto the tile to ensure proper adhesion.



3. REMOVE LINER

Remove the backing, leaving the adhesive. If the adhesive removes with the tab as you lift, then press the corner again to re-attach the adhesive to the tile.



4. LINE UP AND PRESS

Using your phone or a level, place the tile against the surface. Apply pressure against the tile for up to 30 seconds for the best results.

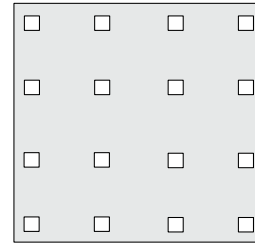


SCAN QR CODE

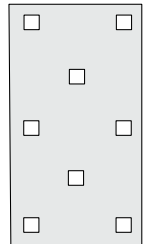
for 3-minute instructional video.

If you have any questions email: support@feltright.com

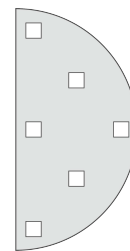
TAB PLACEMENT



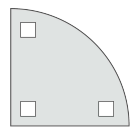
Large Square
24x24



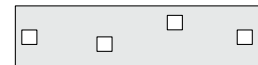
Large Halflap
24x12



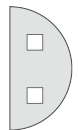
Large Half Circle
24x12



Quarter Circle
12x12



Shiplap
24x6



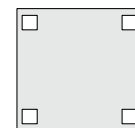
Half Circle
12x12



Mini Shiplap
12x3



Half
12x6



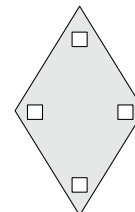
Square
12x12



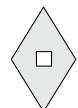
Quarter
6x6



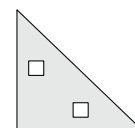
Pixel
3x3



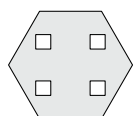
Large Diamond
21x12



Diamond
6x10



Triangle
12x12

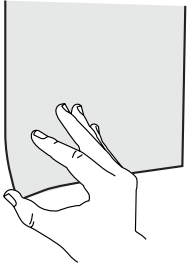


Hex
10x10



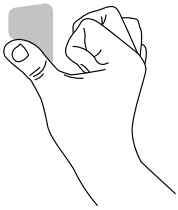
INSTRUCTIONS

HOW TO REMOVE TILES



1. PULL UP CORNER

Starting with one corner, **SLOWLY** peel the tile from the wall, leaving the adhesive behind. Insert your finger behind the tile and slowly add pressure until the tile releases from one tab.



2. ROLL OFF ADHESIVE

Starting at the corner, roll your thumb across the adhesive to peel it off the wall.