

# Embellish Grande DiningTable

／ EMB207+208

Fashion meets furniture with luxurious embellishments of brass studs and marble to offset striking timber profiles.



**zuster**

# Embellish Grande Dining Table

EMB207+208

## Materials —

Embellish Boardroom table with three pedestal bases. Cloud, rounded rectangle top with 33mm solid timber edge, marble & brass inlay through the centre. Power & data box recessed into table top, and concealed in the U shape base

## Customisable —

This item is hand crafted and made to order

Custom sizes are available

Available with CMS table boxes that can include GPO, Data points (internet), USB Charging, Audio Visual and wireless charging points.

The tops of the boxes can either be raw metal, powder coated or veneer top to match the table

## Finishes —

Available in all Zuster timber finishes

Available in marble options

Please refer to our website for marble options

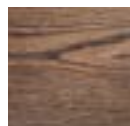
Designed and hand crafted at Zuster HQ in Melbourne, Australia.



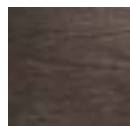
Limed Oak



American Oak



Hazelnut



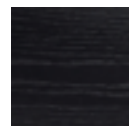
Coal



Slate



Saddle



Mink

**zuster**

# Embellish Grande Dining Table

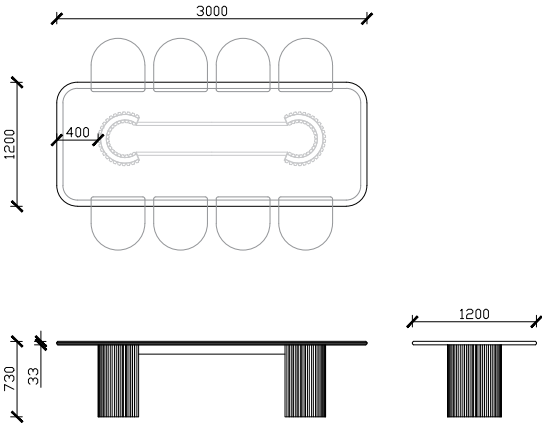
EMB207+208

### Standard Dimensions —

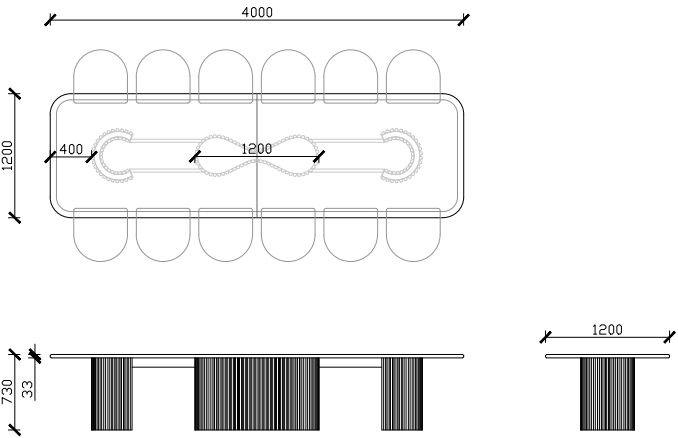
EMB207+208A  
3000l x 1200w x 730 high (mm)  
Top with Centre join  
Seats 8-12 people

EMB207+208B  
4000l x 1200w x 730 high (mm)  
Top with Centre join  
Seats 12-16 people

EMB207+208A



EMB207+208B



# Embellish Grande Dining Table

EMB207+208

**Standard Dimensions —**

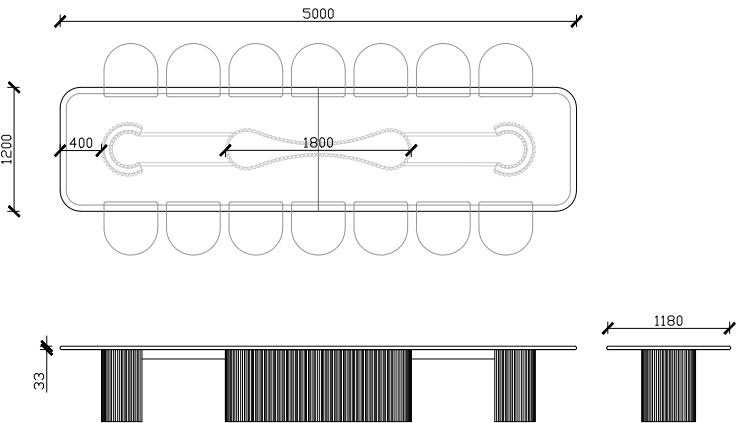
EMB207+208C

5000L x 1200W x 730 high (mm)  
Top with Centre join  
Seats 14-18 people

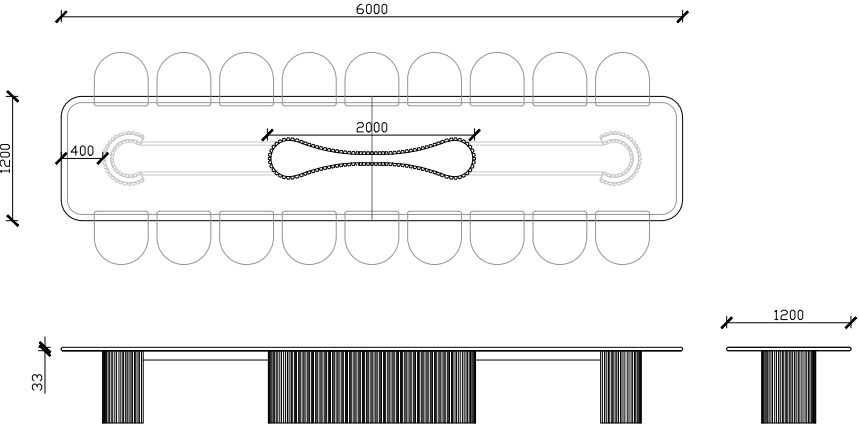
EMB207+208D

6000L x 1200W x 730 high (mm)  
Top with Centre join  
Seats 18-22 people

EMB207+208C



EMB207+208D



## Sustainability

### Our commitment

‘ Sustainability goes hand-in-hand with the integrity of our business and our beautiful, enduring products.’

Fleur Sibbel, Managing Director, Zuster.

Zuster is committed to designing pieces that are produced to the highest of environmental standards and built to last. In doing so we are compelled to respect our natural environment which is the very source of our beautiful and enduring designs.

As a company we endeavour to operate in the most innovative and efficient manner. Zuster’s recycling and waste management program sees us re-use and/or recycle 90% of our waste products. In 2020 Zuster has actively reduced our overall energy consumption by 20% across our three Australia-based factories. By 2021 our administrative process will be completely paperless.

### Local manufacture

Our company, like our furniture, is built upon five generations of design heritage. Each and every item we produce is designed with intention: an heirloom for future generations to cherish and enjoy. We achieve this by staying local.

As leaders in sustainable, locally produced furniture we are reducing our impact on the environment by producing local for locals. We are proud to use a majority of local suppliers and maintain our own manufacturing facilities within Australia. This allows us to support our local economy while also eliminating complex logistics and minimising transportation of products.

Our customers feel the positive impacts of this directly. Their investment in a Zuster piece is the beginning of a lifelong commitment, on our part, to restore and repair our pieces to their original glory. So your Zuster piece will last a lifetime, and beyond.

### Mindful material use

A Zuster design is not only timeless, it is durable, too. We use consciously sourced natural materials in the making of our products. We regularly review our use of raw materials to ensure continuous improvements in efficiencies of manufacture, as well as traceability.

Our timbers are selected for their low environmental impact. These are FSC-certified, PEFC-certified and chain of custody accredited. The mills from which we source meet stringent requirements in terms of forest regeneration, biodiversity and the protection of native fauna.

## Useful information

### Care advice, maintenance and warranty:

<https://zuster.com.au/pages/cleaning-care>

### Showroom:

33 Church Street, Hawthorn, Victoria, Australia 3122.  
Call +61 3 9852 8410 / Email [info@zuster.com.au](mailto:info@zuster.com.au)  
Visit [zuster.com.au](http://zuster.com.au)



**zuster**