

SEMI-PERMANENT CURL FOR LASHES

VLash Curl Lock Lash Perm

Give your clients perfectly curled lashes and freedom from daily lash curling! This semi-permanent treatment is an easy add-on that lasts for up to 3 months.



Treatment time:

45 mins.



Suggested price:

\$65



Cost per treatment

\$3.50



SAMPLE MENU DESCRIPTION:

Skip the step of curling your lashes and go straight to mascara, or enjoy the natural curl of your lashes with no mascara needed! This semi-permanent beauty treatment will create a curl in your natural lashes in under an hour.





What you'll need:



VLASH CURL LOCK LASH PERM KIT

C1125TV

This kit includes everything you need to create perfectly curled lashes!

- Curl Lock Perm Lotion for long-lasting curls, single use, 30 packs (C1126TV)
- Curl Lock Setting Lotion to help hold the curls, single use, 30 packs (C1127TV)
- Curl Lock Nourishing Lotion to prevent the lashes from becoming dry and brittle, single use, 30 packs (C1128TV)
- Curl Lock Cleaning Lotion for cleansing lashes after perming, 0.68 fl. oz. bottle (C1132TV)
- Curl Lock Disposable Perm Rollers / Large, 10 pairs (C1129TV)
- Curl Lock Disposable Perm Rollers / Medium, 10 pairs (C1130TV)
- Curl Lock Disposable Perm Rollers / Small, 10 pairs (C1131TV)
- Curl Lock Perm Glue to hold the lash rollers in place, 0.17 fl. oz. bottle (C1120TV)



GENTLE FOAM CLEANSER

C1277TV



EYE GEL PADS

C1269TV



MINI SPATULAS

C1186TV



MICROFIBER BRUSHES

C1185TV



DISPOSABLE EYELASH COMBS

VL130



EYELASH TWEEZER

C1280TV OR
C1279TV

Intrinsics Cotton Naturelles • CX014T

Intrinsics Cotton Esthetic Wipes • CX020T

Nitrile Gloves • C3670T

Wooden Applicators (3.5" flat) • C981T

Cotton Swabs • C3601

Digital Timer • C5947



Protocol



1

PREPARE LASHES

Have client remove contacts. Remove all makeup from eyelids and surrounding with an oil-free makeup remover (VLash Gentle Foam Cleanser is recommended). Once the guest lies down, apply a VLash Eye Pad to cover the lower lashes. Using a cotton swab, apply a small amount of Cleansing Lotion and cleanse the lashes from base to tip until lashes are completely clean. Use a dry cotton pad to dry lashes. Comb the eyelashes out.



2

SELECT ROLLER SIZE

Select the roller size that allows all of the lashes to adhere completely to the roller. As a general rule, a large size roller is used for long and thick lashes, a medium size roller is used for average lashes, and a small size roller is used for short, thin lashes.



3

TRIM

Remove selected roller from package. The roller has an adhesive coating. Hold roller end with thumb and index fingers while removing from package. Avoid handling the roller except on the edge, or the adhesive will be damaged. Bend the roller slightly to fit the shape of the eyelid. Trim length according to guest's eyelid length.



4

PERM GLUE

Put a small amount of Curl Lock Perm Glue on a mini spatula and apply it to the eyelid before applying the roller. This will prevent glue from being contaminated when used on different customers. Use enough glue to cover an area equal to the length and twice the width of the roller.

Application of the glue should be done as quickly as possible.



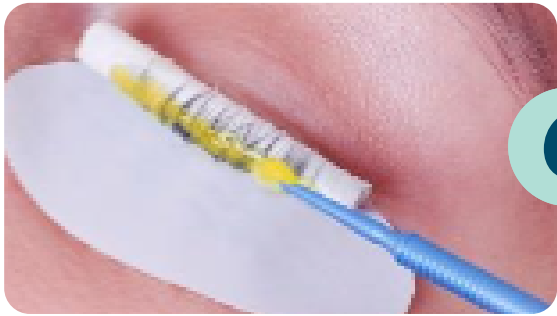
5

APPLY LASHES TO ROLLER

Lay the roller on the base of the lashes. Use a tweezer or a wooden applicator and lightly press the lashes onto the roller, a few lashes at a time. Every lash must set on the roller in a straight manner and avoid overlap.



Protocol



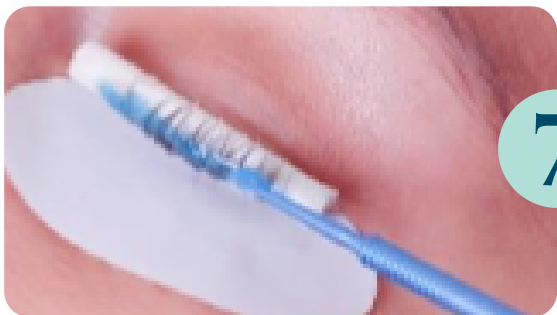
6

PERM LOTION

Open the Perm Lotion pack and place a small amount onto a microfiber brush. Gently apply the Perm Lotion onto the base and middle portion of the lashes (not the tips).

Using a small damp cotton pad and small amount of Perm Lotion, create a very thin and horizontal line of the Perm Lotion in the middle of the cotton pad. Fold the cotton pad to expose only the horizontal line, and then apply the cotton pad with the horizontal line onto the Perm Roller.

This will secure the perming process. Cover the entire eyelid with a larger damp cotton pad. This will allow the Perm Lotion to achieve maximum results. Allow lashes to process for 8 minutes.



7

SETTING LOTION

Before applying Setting Lotion, remove Perm Lotion completely from eyelashes by applying a small amount of Cleansing Lotion to a cotton swab to remove any remaining Perm Lotion. With a microfiber brush, place a small amount of Setting Lotion on lash base and the middle portion of the lashes.

Using a small damp cotton pad and small amount of Setting Lotion, create a very thin and horizontal line of Setting Lotion in the middle of the cotton pad and then apply the cotton pad with the horizontal line onto the perm roller. This will help to secure the setting process.

Cover the entire eyelid with a larger damp cotton pad. This will allow the Setting Lotion to achieve maximum results. Allow lashes to process for 8 minutes.



8

NOURISHING LOTION

Remove Setting Lotion completely by applying a small amount of Cleansing Lotion to cotton swab. Rinse the eyelashes a few times to remove any remaining Setting Lotion.

Using a microfiber brush, apply a small amount of Nourishing Lotion to lashes. Cover lashes and eyelid with damp cotton pads and allow Nourishing Lotion to process for 5 minutes.



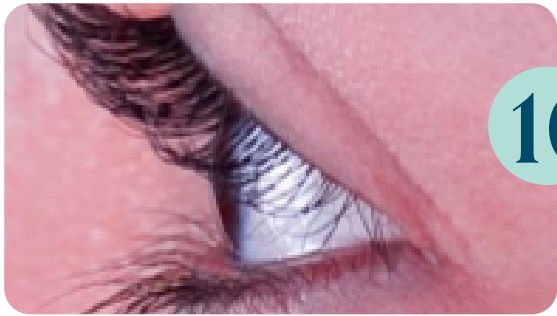
Protocol



CLEANSING LOTION

Place a generous amount of Cleansing Lotion onto a cotton swab. Gently apply onto entire roller of eyelashes at base and eyelid area where you have applied the Perm Glue.

Repeat this step by gently rubbing the roller with Cleansing Lotion for a few moments until some lashes begin to free from roller. Use more Cleansing Lotion on a cotton swab to gently clean the upper part of the roller touching the eyelid. Continue to use the cotton swab with Cleansing Lotion; slowly roll the roller downward, carefully freeing the lashes one by one.



FINISH

Use clean water and rinse the eyelashes a few times. Use a dry cotton pad to finish the procedure. Beautifully curled eyelashes are now revealed!