

A SERVICE OPTION FOR NATURAL NAILS
REQUIRING STRENGTH, PROTECTION,
AND LIGHT SHAPE ENHANCEMENT.

CND PLEXIGEL™ Shaper Natural Nail Overlay

STEP-BY-STEP GUIDE



Treatment time:

45-60 min



Suggested price:

\$50-65



Cost per treatment

\$4.79



SAMPLE MENU DESCRIPTION:

If you're looking to add strength, protection, and length to weak or damaged nails, this service is for you!

First, you'll experience a safe, relaxing manicure. Next, your nail professional will perfect and enforce your natural nail with a strong, clear gel enhancement and sculpt a small free edge for added length. Finally, your nails will be finished with a fabulous color of your choosing.





What you'll need:



CND Plexigel is versatile and convenient brush-in-a-bottle gel nail enhancement system that provides up to 3+ weeks of strength, length, and shape.

- CND PLEXIGEL™ BONDER** CND879
- CND PLEXIGEL™ SHAPER** CND881
- CND PLEXIGEL™ PROTECTOR TOP COAT** CND882



COOLBLUE™
Hand Cleanser

CND158



OFFLY FAST™
Moisturizing Remover

CND450



SCRUBFRESH™ Nail
Surface Cleanser

CND159



CND™ Files and Buffers

CND175
CND176

Accessories/Equipment Required

We recommend using the items below:

- **CND™ LED Lamp** N1844
- **Sposh Terry Hand towels** JL714
- **Intrinsics plastic-backed, lint-free pads** CX122T
- **Complete Pro 99% Isopropyl Alcohol** CP186
- **Stainless Steel Cuticle pusher** NB159
- **Cuccio 1/2 Jaw Manicure nippers** CUC653
- **Ultra Fingernail Clipper with File** ULT07
- **Cuccio Under the Nail Cleaner Curette** CUC655
- **Ikinna IP-DXR Cordless Portable Drill, Rose Gold** YC103
- **3/32" Carbide Nail Bits Large Barrel, Silver, Fine Grit** NB271





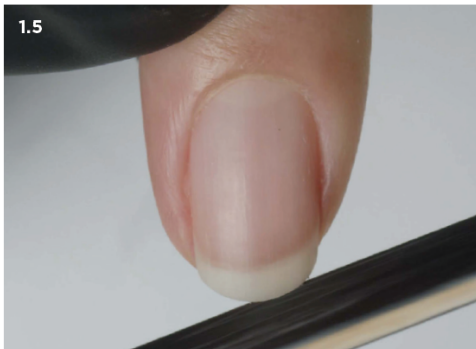
Protocol

Step 1

PERFORM A MANICURE.

P

1. Have the client wash their hands with soap and running water for 20-30 seconds and towel dry.
2. Massage **COOLBLUE™** Hand Cleanser into the client's hands.
3. If necessary, remove any existing nail color from the natural nail using an acetone-based polish remover (**OFFLY FAST™** Moisturizing Remover) and a plastic-backed lint-free pad.*
4. If necessary, trim the length from each nail, using nail clippers.
5. Shape the free edge of each nail with a fine 240-grit file (**Kanga™ File** or **Koala Buffer™**).
6. Gently slide a **cuticle pusher** along the nail plate toward the proximal nail fold (cuticle area) and along each lateral fold (sides of nail) to lift and loosen any cuticle (non-living tissue) from the nail plate.**
7. Gently guide a **urette** along the nail plate to remove non-living tissue on the nail.
8. If necessary, use a **manicure nipper** to carefully remove any loose pieces of skin or hangnails.



* Acetone-based polish removers like **CND™ OFFLY FAST™** is the quickest and safest way to remove nail color. Non-acetone-based polish removers will dissolve enamel more slowly and "smear" the color onto the cuticle area risking over-exposure.

** For clients who build excessive cuticle between services, apply a small amount of **CuticleAway™ Professional Cuticle Remover** evenly around the cuticle of each nail and perform cuticle service. Be sure to scrub nails thoroughly with soap and running water for 20-30 seconds to thoroughly remove the cuticle remover and towel dry.

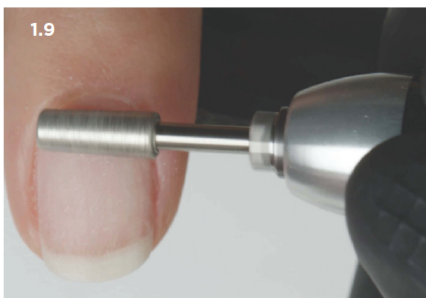
R E P

REMOVE SHINE.

9. Remove shine from the natural nail surface with a fine 240-grit buffer (**Koala Buffer™**) in the direction of the natural nail growth. **Optional:** Use an enhancement prep bit at low speed with very gentle pressure with E-File.

ELIMINATE SURFACE CONTAMINANTS AND PURIFY NAIL PLATE LAYERS.

10. Thoroughly cleanse and temporarily dehydrate the nail plate layers with **SCRUBFRESH™** using a lint-free, plastic-backed pad. Pull back the skin and scrub the nail as if removing red nail polish.

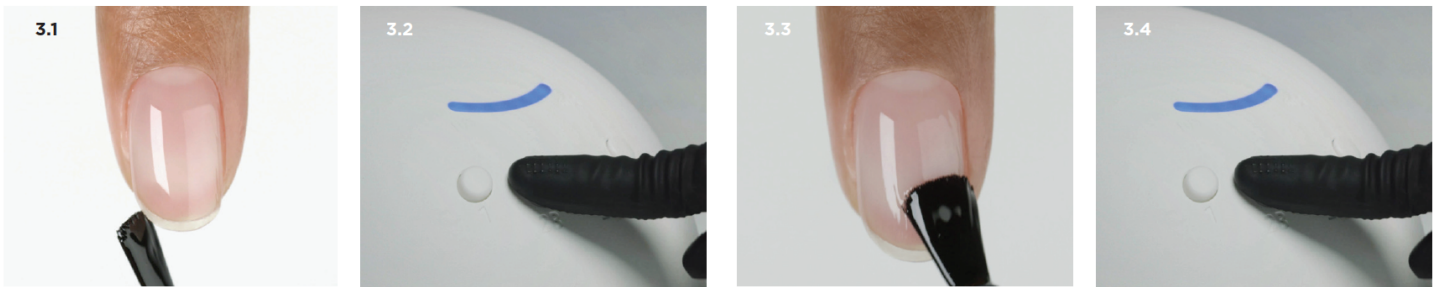




Protocol

Step 3 APPLY CND PLEXIGEL™ SHAPER

1. Apply a thin, even layer of CND PLEXIGEL™ Shaper to the natural nail, sealing the free edge after application. Always leave a tiny free margin around the perimeter of the nail to avoid the skin.
2. Apply to all five nails and cure for one minute in the CND™ LED Lamp using preset button 2B. Do not remove the top film after removing the nails from the lamp.
3. Apply a second layer of shaper to perfect the shape, using a light touch to float the gel over the nail.
 - a. Flash cure two fingers at a time to prevent the gel from running, using preset button 1.
4. Apply shaper to all five nails and cure for one minute using present button 2B.



Step 4 PERFECT THE SHAPE

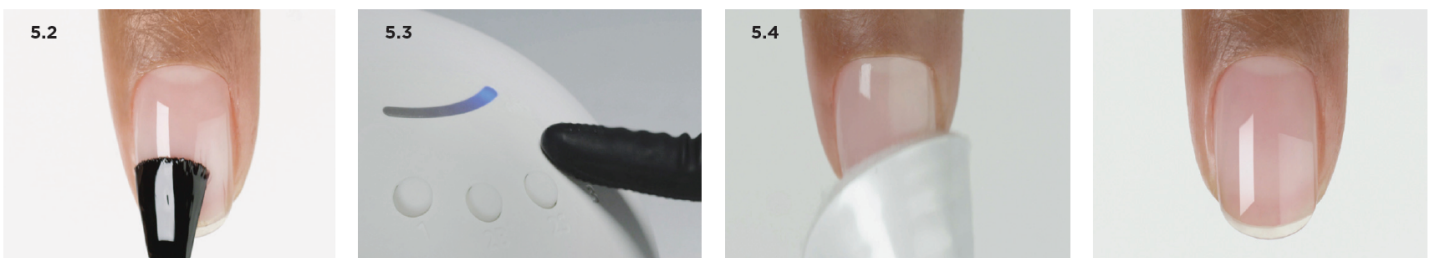
(Optional)

1. If shape refinement is needed, remove top film with cotton pad saturated with 99% Isopropyl Alcohol.
2. Buff the surface of the nail to smooth out any imperfections using a 180-grit file or buffer (Boomerang Padded File or **Bilzzard™ File**)
Optional: Use a medium grit diamond bit at ½ speed with E-File
3. Remove dust and cleanse the nail with 99% Isopropyl Alcohol.

Step 5 APPLY CND PLEXIGEL™ PROTECTOR TOP COAT

Use to seal and protect clear enhancements or prior to applying CND™ VINYLUX™ Long Wear Polish.

1. Roll the bottle gently to blend.
2. Apply a layer of CND PLEXIGEL™ Protector Top Coat to all five nails sealing the free edge after application.
3. Cure for one minute in the CND™ LED Lamp using preset button 3.
4. Lightly wipe to remove top film with lint-free pad or cosmetic sponge saturated with 99% Isopropyl Alcohol.





Protocol

Step 6

ADD COLOR

(Option for gel polish)

If using CND™ SHELLAC™ Gel Polish, skip Protector Top Coat and CND™ SHELLAC™ Base Coat.

1. Shake CND™ SHELLAC™ Color vigorously to blend.
2. Apply two thin layers of color coat to all five nails using the 5-point polish method.
3. Cure each layer for one minute in the CND™ LED Lamp using preset button 2S.
4. Apply a layer of CND™ SHELLAC™ Top Coat to all five nails.
5. Cure for one minute in the CND™ LED Lamp using preset button 3.
6. Lightly wipe to remove top film with cotton pad or cosmetic sponge saturated with 99% Isopropyl Alcohol.
7. Apply a drop of SOLAROIL™ to condition the nail.

