



# CND PLEXIGEL™ Rebalance

Rebalancing is a method of maintaining the balance and beauty of the enhancement while the natural nail grows.

## CND™ PRODUCTS REQUIRED

- COOLBLUE™ Hand Cleanser
- OFFLY FAST™ Moisturizing Remover
- SCRUBFRESH™ Nail Surface Cleanser
- CND™ Files and Buffers
- CND PLEXIGEL™ Bonder
- CND PLEXIGEL™ Shaper
- CND PLEXIGEL™ Builder
- CND PLEXIGEL™ Protector Top Coat
- CND™ SHELLAC™ Color Coat\*
- CND™ SHELLAC™ Top Coat\*

## ACCESSORIES/EQUIPMENT REQUIRED

- CND™ LED Lamp
- Hand towels
- Hand soap
- Plastic-backed, lint-free pads
- 99% Isopropyl Alcohol
- Cuticle pusher
- Manicure nippers
- Nail clippers
- Curette
- E-File\*

\*Optional

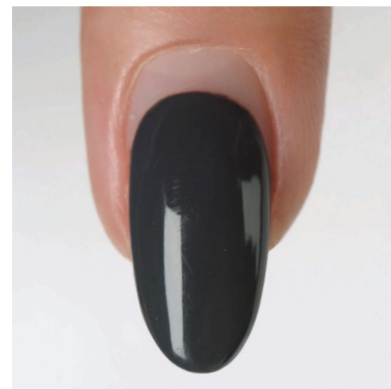


## Step 1 CLEANSE HANDS

1. Have the client wash their hands with soap and running water for 20-30 seconds and towel dry.
2. Massage COOLBLUE™ Hand Cleanser into the client's hands.

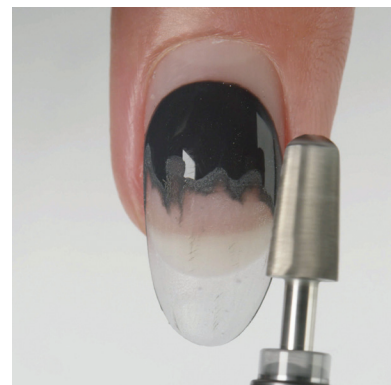
## Step 2 ASSESS THE ENHANCEMENT

1. Assess the nail for potential problems.
  - a. If the nails come back problem free, the goal is to re-establish the original length, reduce the bulk and apply fresh product to re-engineer the enhancement's structural integrity.
  - b. If the nails come back with problems, thin and bevel each zone to remove the problem, then replace the product to prevent future breakdown.



## Step 3 FILE PREP

1. For fast efficient removal, use an E-File to remove color and reduce the bulk of the enhancement coating up to 85% starting with **Zone 1**.
  - a. Re-establish length and thin out the entire Zone 1, using a 100/180-grit file or a medium to coarse grit carbide bit at ½ speed for E-File.
  - b. Keep the file parallel to the nail to evenly thin out the coating.
  - c. For natural nail overlay, bevel to expose a small margin of keratin all the way around the extension edge to reseal the edge with fresh product.
2. Thin out **Zone 2** and taper the lateral walls.
  - a. Prep any cracks for repair by thinning the area around the crack. Thin all the way to the base of the crack (which is usually down to the natural nail plate).
  - b. Thin and taper lateral walls until flush to the natural nail.
  - c. Blend Zone 2 into Zone 1.
3. Lightly blend **Zone 3** until the product is flush to the natural nail and remaining product is thin and even.
  - a. If necessary, thin areas of lift until the separated product flakes away from the nail and a new seal is found.



## Step 4

# PERFORM DRY P.R.E.P.

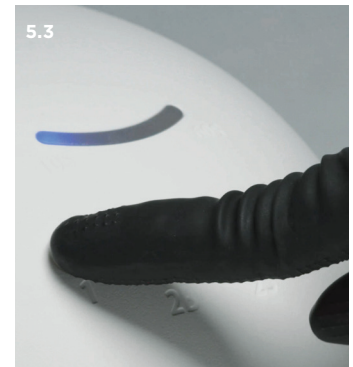
1. P – Perform a dry manicure.
  - a. Gently slide a cuticle pusher along the nail plate toward the proximal nail fold (cuticle area) and along each lateral fold (sides of nail) to lift and loosen any cuticle (non-living tissue) from the nail plate.
  - b. Gently guide a curette along the nail plate to remove non-living tissue on the nail.
  - c. If necessary, use a manicure nipper to carefully remove any loose pieces of skin or hangnails.
2. R – Remove shine from the natural nail only with a fine 240-grit side buffer (**Koala Buffer™**)  
**Optional:** Use an enhancement prep bit at low speed with very gentle pressure with E-File.
3. E – Eliminate surface contaminants and P – Purify nail plate layers.  
Thoroughly cleanse and temporarily dehydrate the nail plate layers with **SCRUBFRESH™** using a lint-free, plastic-backed pad.



## Step 5

# APPLY CND PLEXIGEL™ BONDER

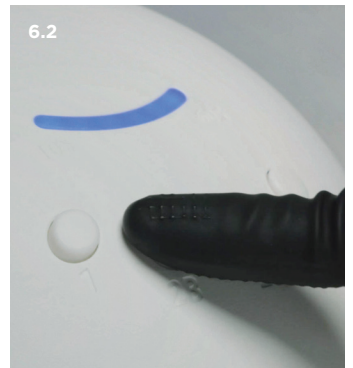
1. Roll the bottle gently to blend.
2. Apply a thin layer of **CND PLEXIGEL™** Bonder to the natural nail only. Always leave a tiny free margin around the perimeter of the nail to avoid the skin.
3. Cure for 10 seconds in the **CND™** LED Lamp using preset button 1.



## Step 6

# APPLY CND PLEXIGEL™ SHAPER OR BUILDER

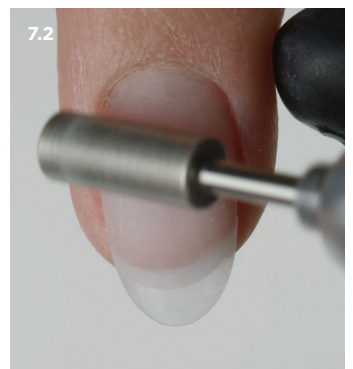
1. Apply a thin layer of **CND PLEXIGEL™** to the nails leaving a tiny free margin along the cuticle line. Reseal lateral walls and free edge with fresh product.
2. Cure for one minute using preset button 2B. Do not remove the top film after removing the nails from the lamp.
3. Apply second layer of **CND PLEXIGEL™** to perfect the shape and re-establish the upper arch and apex.
  - a. Use gravity pull by turning the finger over to help further define the apex and hold for 2-3 seconds.
  - b. Flash cure as needed to prevent gel from running and to control the sensation of heat on the nail, using preset button 1.
4. Apply **CND PLEXIGEL™** to all five nails and cure for one minute using present button 2B.



## Step 7

# PERFECT THE SHAPE

1. If shape refinement is needed, remove top film with cotton pad saturated with 99% Isopropyl Alcohol.
2. Buff the surface of the nail to smooth out any surface imperfections using a 180-grit file or buffer (**Boomerang Padded File** or **Blizzard File™**).  
**Optional:** Use a medium grit diamond bit at ½ speed with E-File.
3. Remove dust and cleanse the nail with 99% Isopropyl Alcohol.



## Step 8

# APPLY CND PLEXIGEL™ PROTECTOR TOP COAT

Use to seal and protect clear enhancements or prior to applying CND™ VINYLUX™ Long Wear Polish.

1. Roll the bottle gently to blend.
2. Apply a layer of CND PLEXIGEL™ Protector Top Coat to all five nails sealing the free edge after application.
3. Cure for one minute in the CND™ LED Lamp using preset button 3.
4. Lightly wipe to remove top film with lint-free pad or cosmetic sponge saturated with 99% Isopropyl Alcohol.



## Step 9

# ADD COLOR

(Option for gel polish)

If using CND™ SHELLAC™ Gel Polish, skip Protector Top Coat and CND™ SHELLAC™ Base Coat.

1. Shake CND™ SHELLAC™ Color vigorously to blend.
2. Apply two thin layers of color coat to all five nails using the 5-point polish method.
3. Cure each layer for one minute in the CND™ LED Lamp using preset button 2S.
4. Apply a layer of CND™ SHELLAC™ Top Coat to all five nails.
5. Cure for one minute using preset button 3.
6. Lightly wipe to remove top film with cotton pad or cosmetic sponge saturated with 99% Isopropyl Alcohol.

