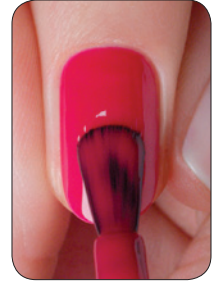


CND 5 Point Polish Method



Enhance service and speed with a streamlined and consistent application method for any color service. The **CND 5 Point Polish Method** is an easy, systematic approach for polish perfection.

TIPS:

When using **CND™ VINYLUX™** Long Wear Polish and **CND™ CREATIVE PLAY™** Nail Polish, lighten the touch and float the brush over the surface of the nail; with **CND™ SHELLAC™** Gel Polish and **CND™ CREATIVE PLAY™** Gel Polish, intensify the touch and flatten the brush to the nail keeping all layers thin and even.

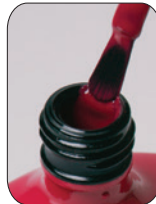
STEP 1:

SEAL THE EDGE

Sealing the edge of the nail first eliminates product build-up during service and provides a perfect seal, even on the shortest nails.

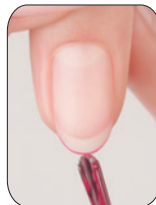
1. Prepare the brush for application.

- a. Pull coated brush from bottle. Wipe both sides on neck to remove excess polish while flattening brush hairs on both sides.



2. Seal the edge.

- a. Holding client's finger, gently push finger pad away from nail. This will help prevent getting product on skin.
- b. With the flattened brush, a thin line of color along the free edge of the nail to seal and ensure complete coverage.



STEP 2:

BEAD IN THE MIDDLE

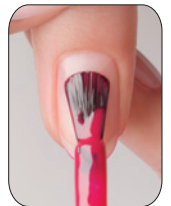
Placing the brush in the center of the nail first eliminates flooding the cuticle line with polish and provides precise application and coverage.

1. Prepare the brush for application.

- a. Pull brush from bottle scooping a small bead onto one side. Flatten and drain other side on bottle's neck.

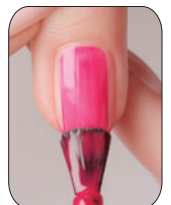


- b. Place bead in center of nail, and glide it down to the free edge.



- c. Lift brush up, angle finger down and ease brush towards cuticle line, putting slight pressure on brush. This technique allows the brush to fan out for precise application while leaving a tiny free margin for a clean, even line.

- d. Glide brush towards free edge to complete center coverage.



STEP 3:

ROTATE RIGHT

Note: Do not re-dip the brush. The bead created in the previous step should be large enough to coat the entire nail.

1. Rotate finger right, and pull back lateral fold so left side of nail is clearly visible.

- a. Using left side of brush, apply color over left side of nail, following contour of sidewall as closely as possible from cuticle line to free edge.

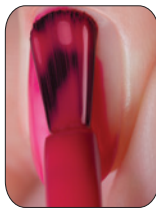


STEP 4:

ROTATE LEFT

1. Rotate finger left, and pull back lateral fold so right side of nail is clearly visible.

- a. Using right side of brush, apply color over right side of nail, following contour of sidewall as closely as possible from cuticle line to free edge.



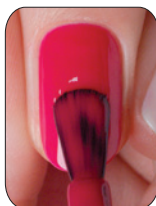
STEP 5:

REPEAT & REFINE

The second color layer will provide additional coverage and color, refining and perfecting the tiny free margins with each layer.

1. Repeat and refine with each layer.

- a. Seal extension edge using exact same steps for remaining layers.



PRODUCTS REQUIRED

CND™ SHELLAC™ Gel Polish*

- Base Coat
- Color Coat
- Top Coat

CND™ VINYLUX™ Long Wear Polish*

- Color Coat
- Top Coat

CND™ CREATIVE PLAY™ Nail Polish*

- Base Coat
- Color Coat
- Top Coat

CND™ CREATIVE PLAY™ Gel Polish*

- Base Coat
- Color Coat
- Top Coat

99% Isopropyl Alcohol

ACCESSORIES/EQUIPMENT REQUIRED

CND™ LED Lamp*

Hand towels

Plastic-backed, lint-free pads

*Optional