

## Preparation:

- Disconnect the negative battery terminal. Park the vehicle on level ground and set the emergency brake.
- We recommend reading through the installation instructions in whole before performing the work.
- Estimated Installation Time: **3 Hours**  
*\*\*This installation requires 2 people for best results\*\**

## You will need the following tools:

- |               |                |                             |
|---------------|----------------|-----------------------------|
| - Ratchet     | - 10mm Socket  | - 12mm Socket               |
| - 14mm Socket | - 17mm Socket  | - 3/16" Allen Wrench/Socket |
| - 1/2" Wrench | - Cutoff Wheel | - Measuring Tape            |

## Included in Kit:

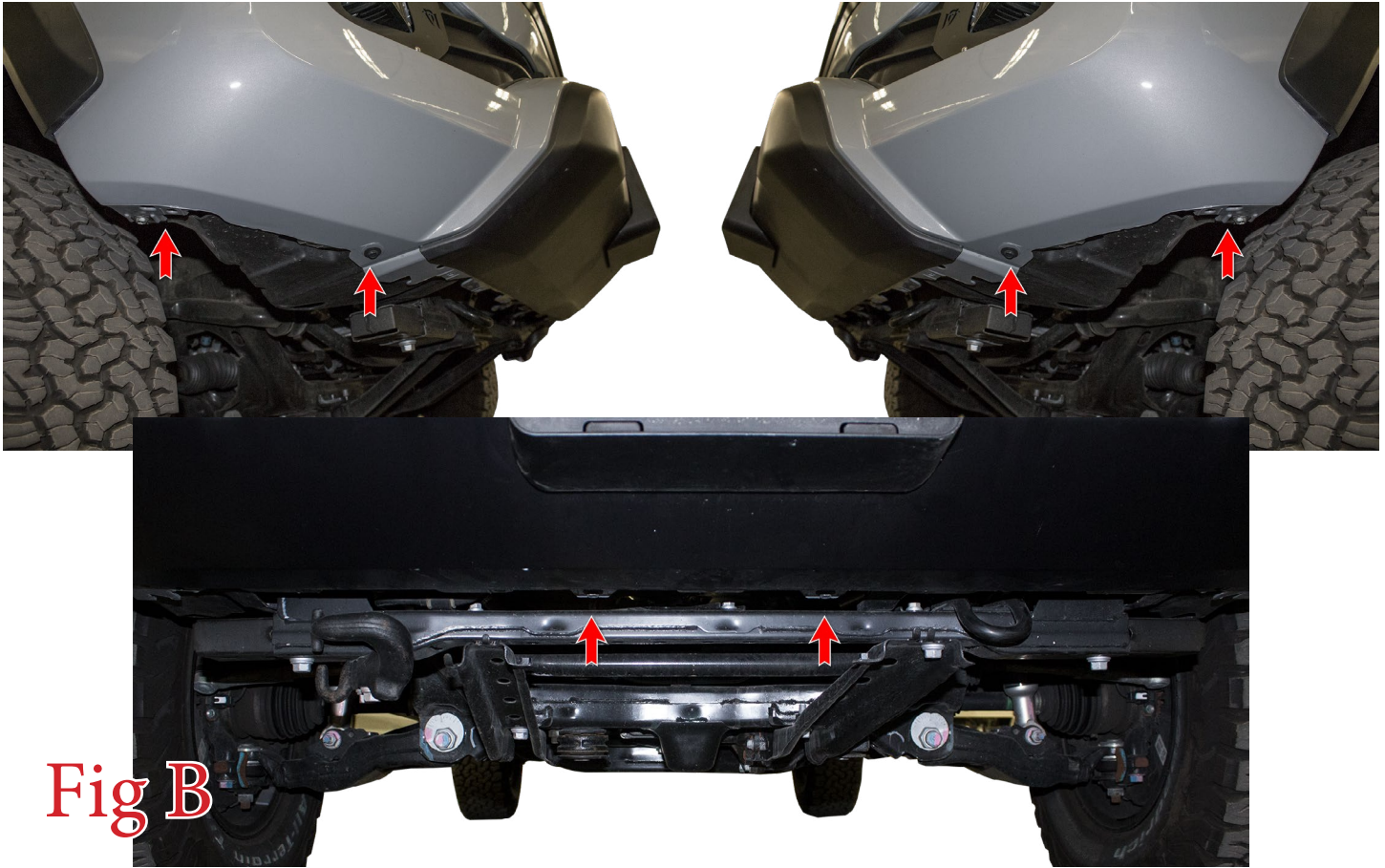
- |                                    |                      |
|------------------------------------|----------------------|
| 1 - Button Head Bolt (3/8-16 x 1") | 1 - Washer (3/8")    |
| 1 - Nylon Lock Nut (3/8"-16)       | 1 - P/S Line Bracket |

## Removal:

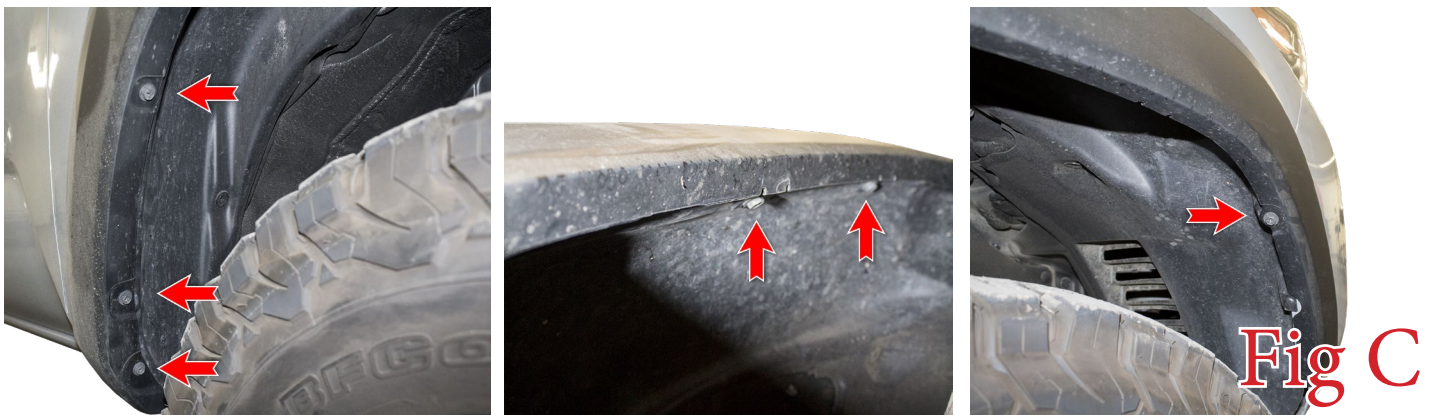
1. From underneath the truck, unplug the connector on the back side of your fog lights.
2. Using a 17mm and a 12mm Socket, remove your skid plate mounting bolts (x6), then remove the skid plate. (Fig A)



3. Using a 10mm Socket, remove the lower Bumper Bolts (x6). (Fig B)



4. If your vehicle has fender flares, use a 10mm Socket to remove the fender flare bolts along the inside of your wheel well (6 per side). (Fig C)

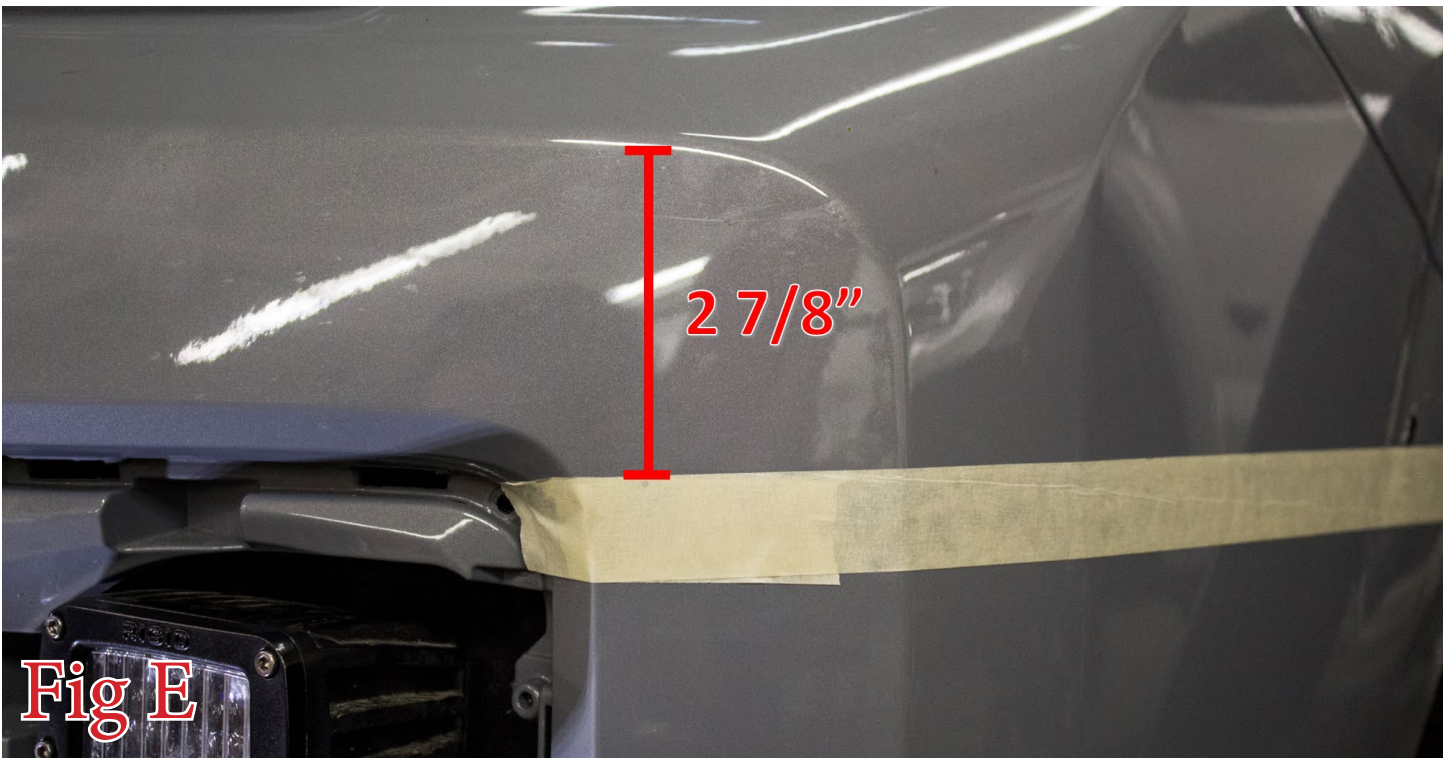




5. Release enough of the plastic clips holding your fender flare on to be able to pull it back out of your way. You may remove this flare completely if you desire, but it is not necessary. (Fig D)



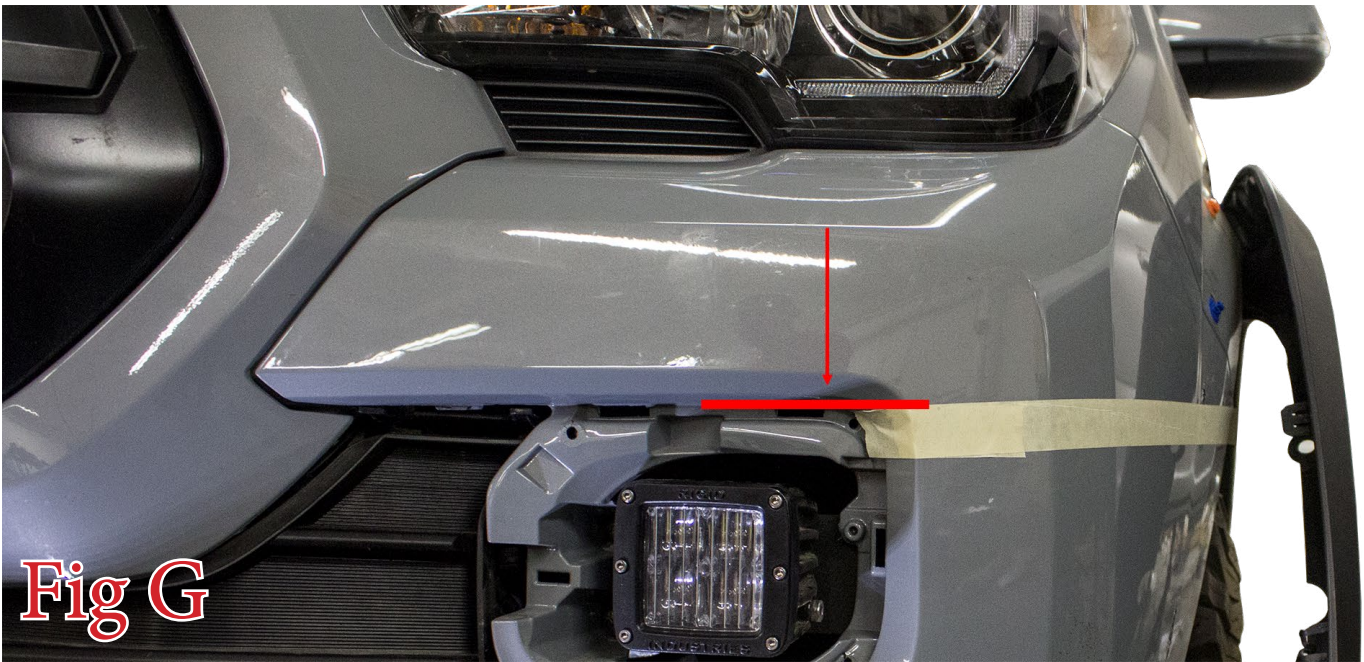
6. The next few steps will cover how to measure and cut your OEM bumper. First, follow the bodyline just above your fog light. Measure from the bottom of the radius of this bodyline 2 7/8" downwards. (Fig E)



7. Find the union between the fender and the bumper. (Fig F)



8. Follow the body line at the top of the fog light pocket. (Fig G)



9. Join these three points together to form a line. (Fig H)



10. When you cut this line, leave about 1/4" of material to ensure you do not cut off too much material. (Fig I)





11. Repeat Steps 6-10 on the other side of the vehicle. Then, pull the OEM bumper off the vehicle. Release the series of plastic clips holding the black plastic insert onto the grille as you pull the bumper off so that it will come off with the bumper. (Fig J)



**Fig J**

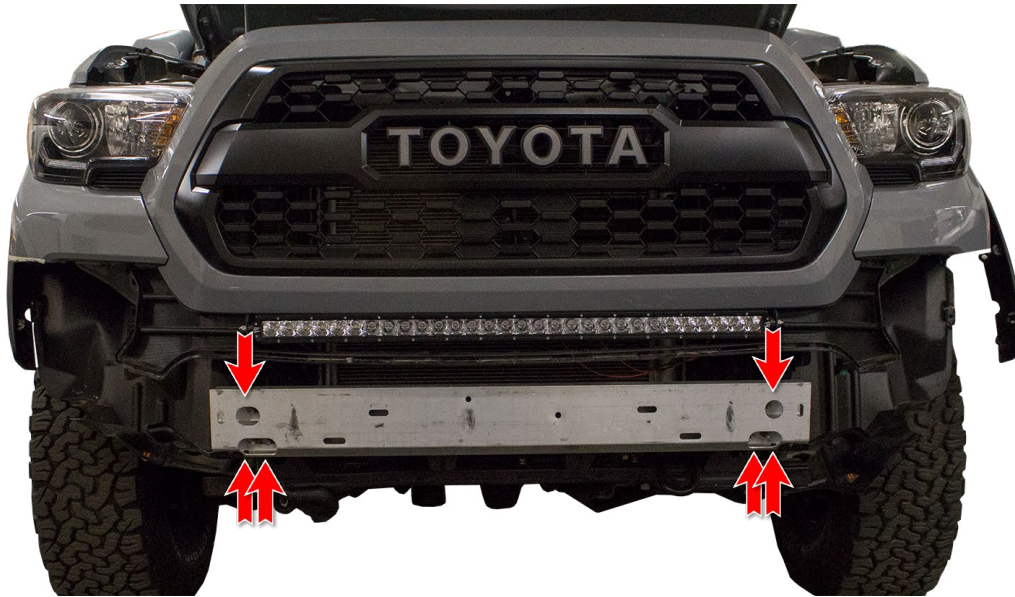
12. Remove the black plastic impact damper by releasing its plastic clips and pulling it off the vehicle. (Fig K)



**Fig K**

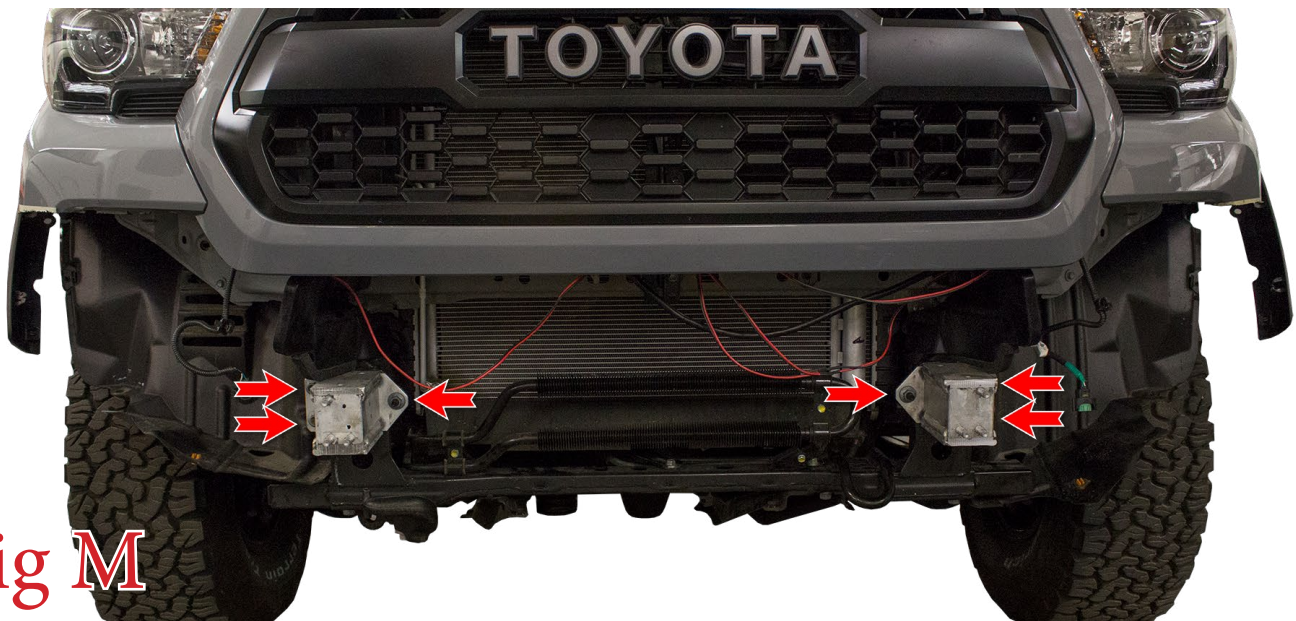


13. Using a 14mm Socket, remove the aluminum bumper mounting bolts (x6). Then, remove the aluminum bumper. (Fig L)



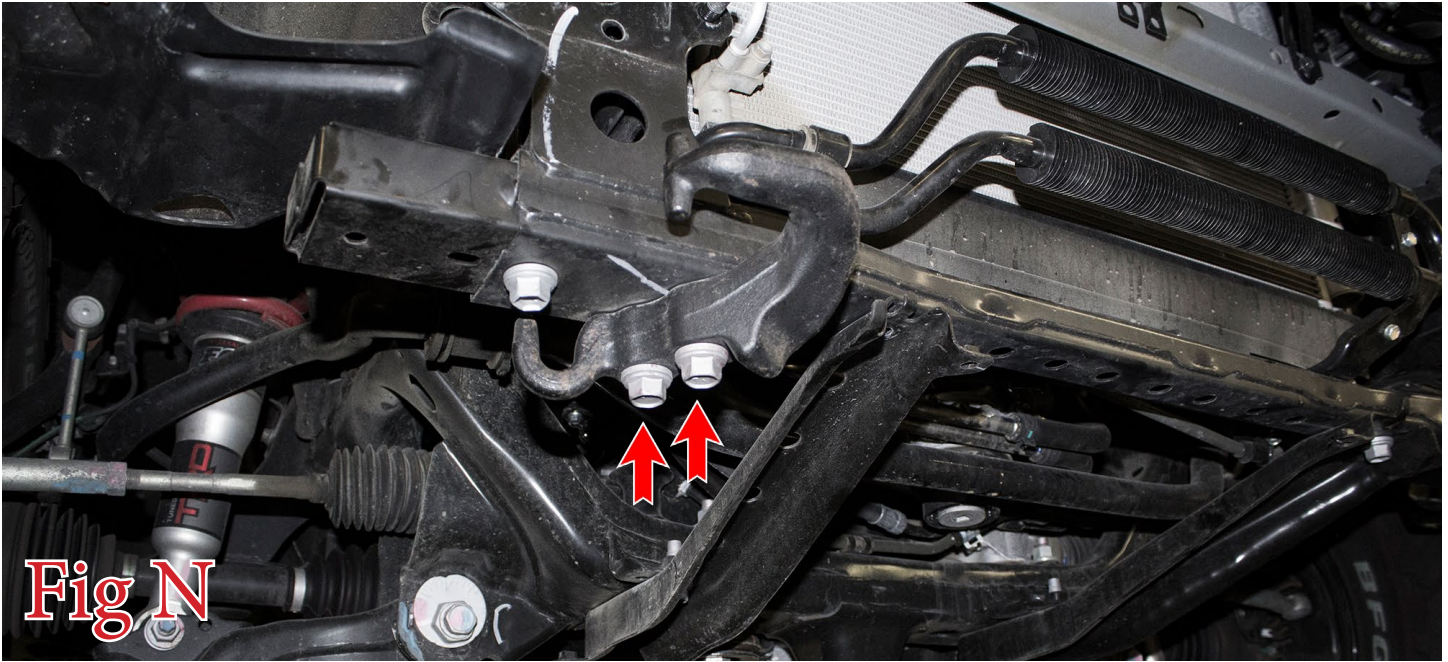
**Fig L**

14. Using a 14mm Socket, remove the bumper bracket mounting nuts (x6). Then, remove the bumper mounting brackets. **Save these nuts for reuse.** (Fig M)



**Fig M**

15. Using a 17mm Socket, remove the passenger side tow hook mounting bolts (x2). Then, remove the tow hook. (Fig N)



16. Using a cutoff wheel, cut the driver side tow hook off flush with the front cross member. Be sure to paint over any bare metal when you are finished. (Fig O)



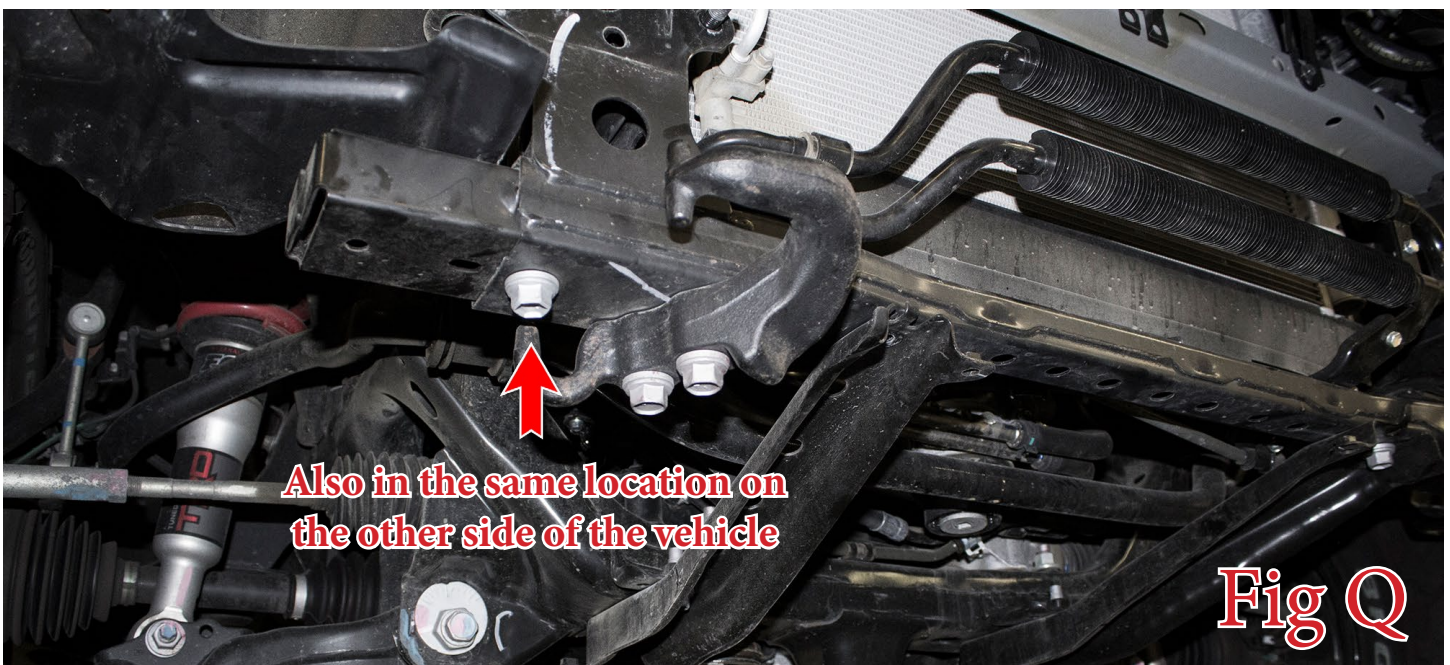


17. Using a 17mm Socket, remove the lower cross member mounting bolts (x4). Then, remove these cross members. **Save two of these bolts for reuse.** (Fig P)



**Fig P**

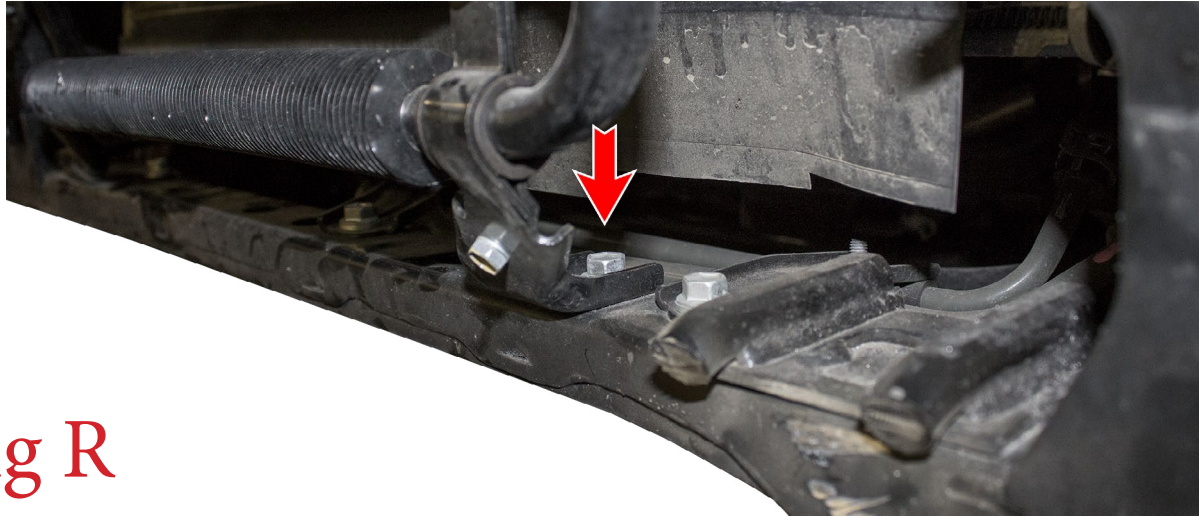
18. Using a 17mm Socket, remove the frame extension mounting bolts (1 per side). Then, remove the frame extensions. (Fig Q)



**Fig Q**

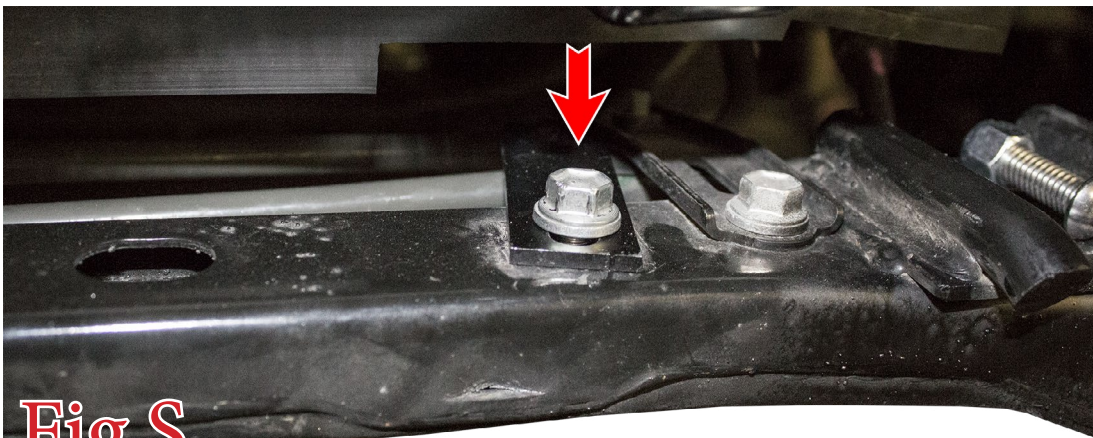


19. Using a 14mm Socket, remove the driver side bolt for the power steering cooler. (Fig R)

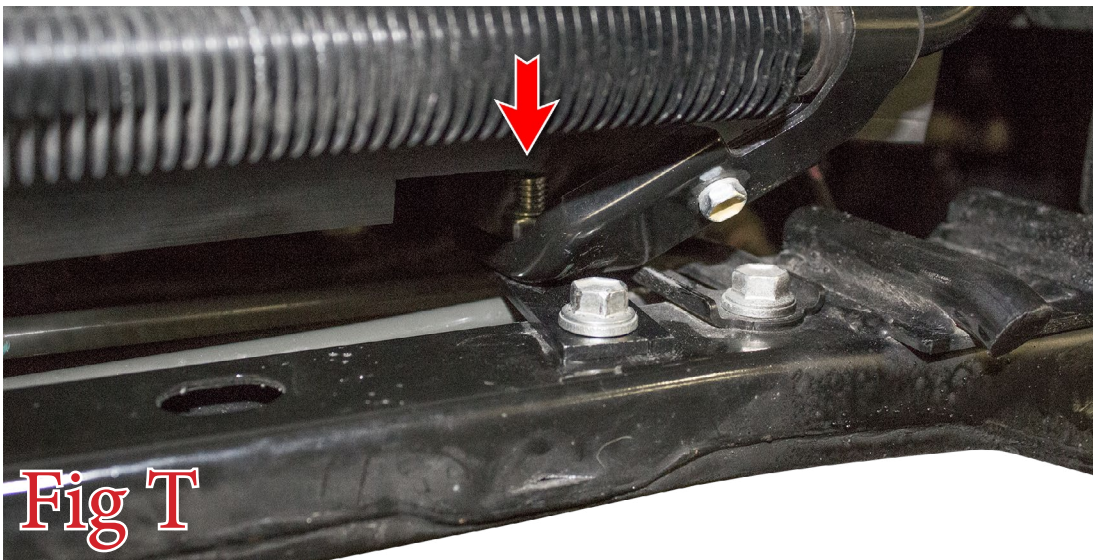


**Fig R**

20. Install the supplied power steering cooler bracket. Do this by first bolting the bracket to the stock cooler location using the OEM bolt. (Fig S) Then, bolt the cooler to the supplied bracket using the supplied 3/8" Bolt, Washer, and Nut. (Fig T)



**Fig S**



**Fig T**

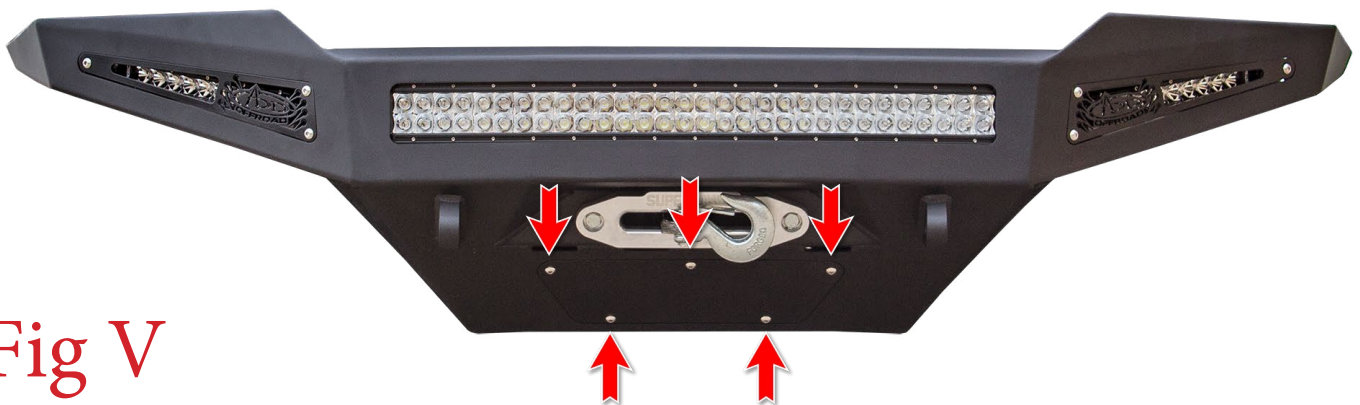
21. Using a utility knife or a cutoff wheel, cut your inner fender liner as shown in (Fig U).



**Fig U**

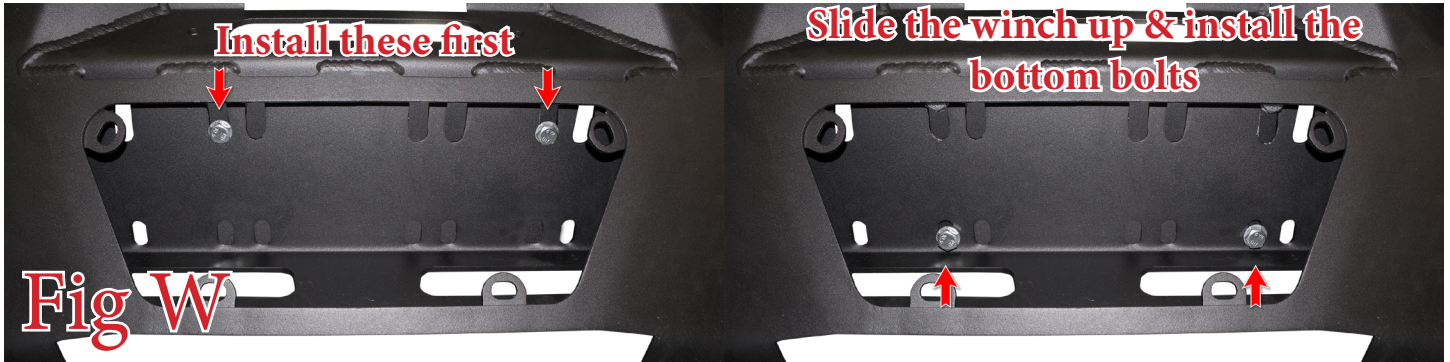
### Installation:

- 22. If you have a winch or lights to install, now is a good time to do so. For light mounting/wiring information, refer to the light manufacturer's installation guide.
- 23. If you are installing a winch, please follow Steps 24-25 . If not, skip to Step 26.
- 24. Using a 3/16" Allen Wrench and a 1/2" Wrench, remove the bumper's skid plate by removing the five mounting bolts. (Fig V)



**Fig V**

25. Start the first two winch bolts all the way down in the slots until they are finger tight. Then, slide the winch up and start the remaining two bolts. (Fig W) For wiring/operation information, refer to the winch manufacturer's installation guide. Once the winch is installed, reinstall your skid plate.



26. Set the bumper in place on your truck to measure and cut any final cuts you may have to make to your OEM bumper to get it to line up evenly with your new bumper (this is why we had you leave extra material when you made the initial cut). Also, cut the fender flare (if applicable) flush with the bumper cut you just made. (Fig X)





27. If you are using a TRD Pro skid plate with our bumper, you will need to cut the lower bumper mounting tab (driver side only) as shown in (Fig Y). **Make sure to paint over any bare metal when you are finished.**



**Fig Y**

28. Set the bumper in place and secure it using the nuts you removed in Step 14. Leave these nuts loose for now. (Fig Z)



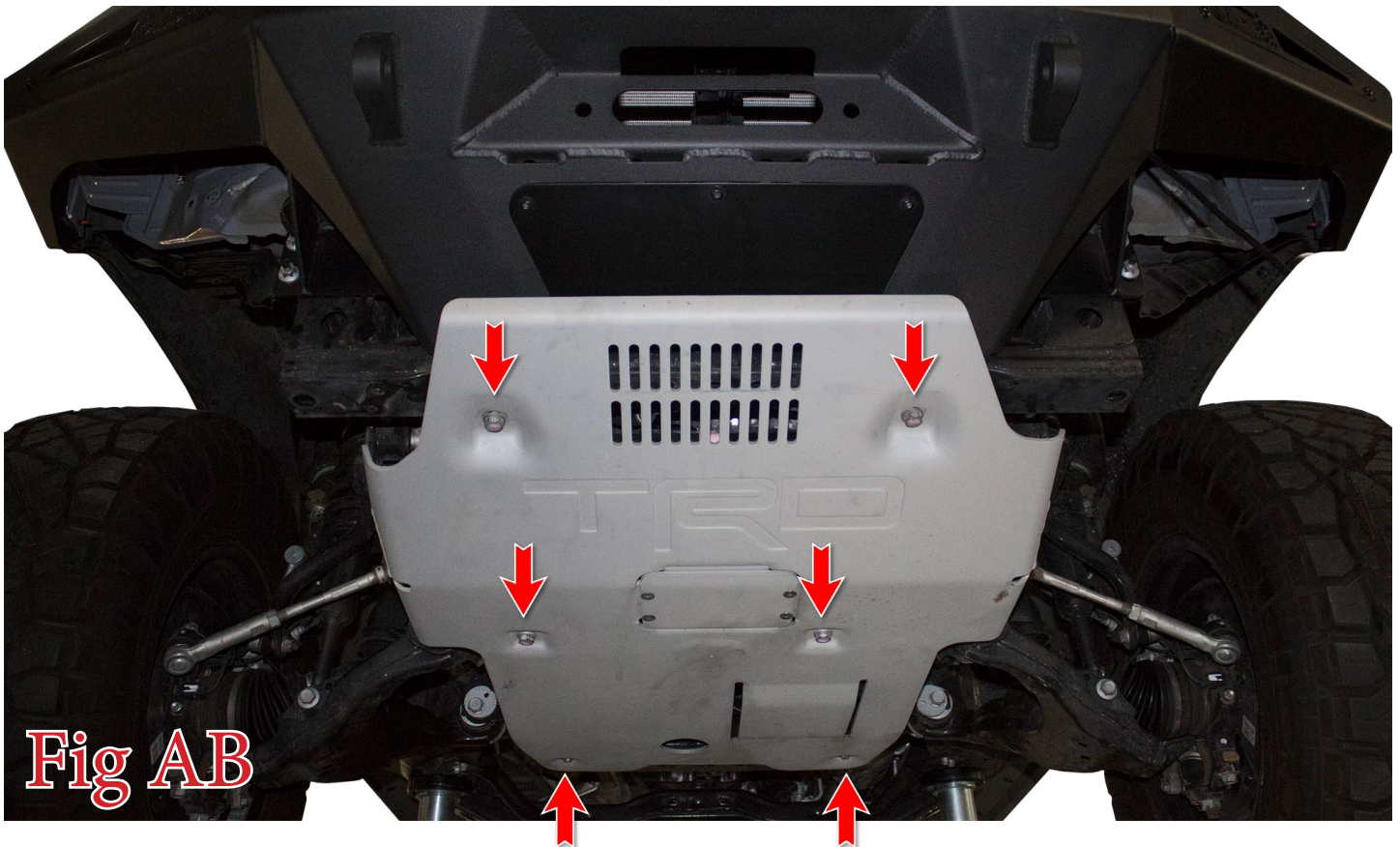
**Fig Z**

29. Loosely install the two bolts you saved in Step 17 into the lower bumper mounting holes. (Fig AA) **If you are using a TRD Pro Skid Plate only install the driver side bolt.**



30. Line the bumper up so that it is centered left to right and sits straight in relation to the vehicle's grille. Then, tighten all mounting bolts to factory torque spec.

31. If you are using a TRD Pro Skid Plate, you may install that now by reversing Step 2. (Fig AB)





32. Stand back and enjoy your new ADD HoneyBadger® Front Bumper.
33. Check and re-tighten if needed, all mounting bolts after 100 miles and periodically thereafter.

