

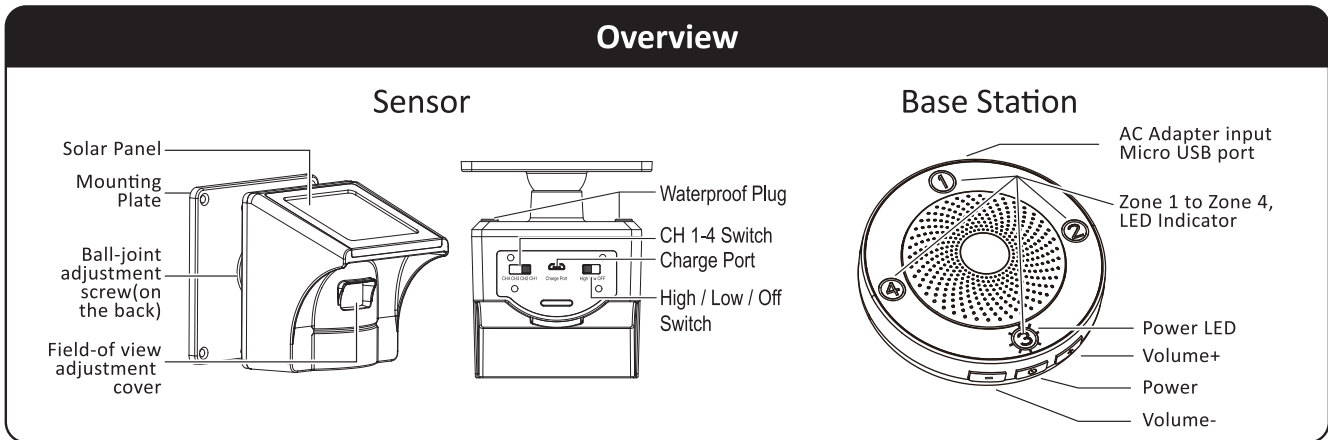


EMACROS

Quick Start Guide

HS-002

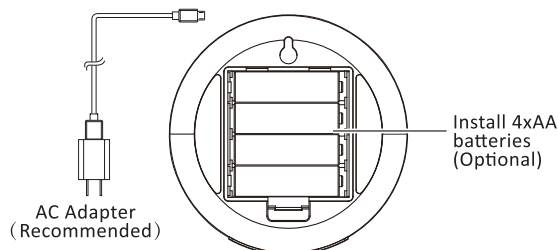
Overview



Powering and Pairing Sensor and Receiver

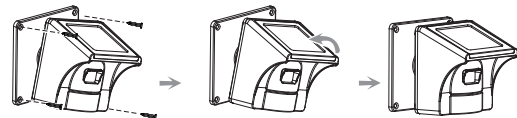
Base Station

- (1) Plug the Base Station into an outlet using the AC adapter. Base Station can also run on (4)AA batteries for up to 2 weeks, as backup in case of power outage.
- (2) The red power light will illuminate on #3 when the Base Station is on. To turn the Base Station on /off, hold down the power button until you hear the on/off tone.
- (3) Adjust the Base Station volume as needed, using the adjustable Volume +/- buttons. Volume adjustments will be heard on subsequent alarm activations, not while adjustments are being made. Powering off the base station will reset the volume to the factory setting.



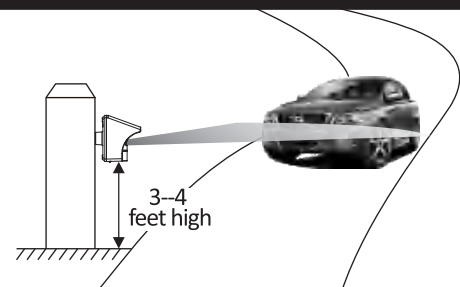
Sensor

- (4) Before installing the PIR Sensor, recharge the sensor (with 18650 battery attached) using the AC adapter to ensure a full charge. The blue light will illuminate while charging. The blue light will turn off once the battery is fully charged.
Note: The sensor has been tested several times in the factory. If the blue light won't illuminate, the battery may be fully charged, you can install it directly.
- (5) High / Low / Off Switch: First, open the black silicone seal cap at the bottom of the PIR Motion Sensor, then turn on the sensor by switching to High or Low. Set the detection range to High (30feet), Low (20 feet), or turn sensor Off.
- (6) CH 1-4 Switch: Select a different channel for each outside sensor. When detecting movements, a sensor eye will flash red only when assigned to lines 1 and 2, not lines 3 or 4.
Note: Each Separate channel uses an unique chime, allowing you to match different chimes with different channels.
- (7) Test the PIR Motion Sensor by waving your hand in front of the sensor. The Base Station will produce a unique tone based upon the sensor's setting.



Installing the Sensor

- 1) Mount the waterproof PIR Motion Sensor vertically on a solid surface 3-5 feet (1-1.5m) above the ground (rotate sensor to access screw holes). The sensor should be able to swivel as needed. Position the sensor to avoid direct sunlight shining on the sensor eye while simultaneously keeping the solar cell facing upward.
- 2) Vehicle Alert Installation: The best mounting position for detecting vehicles is about 4 feet (1.2m) high. The PIR sensor detects the movements with heat sources; please adjust the sensor eye with horizontal angle to the engine of the car.
Note: The sensors operate best in the -4F to 140F degree range. The sensors will not work properly outside of this temperature range.



Troubleshooting

- **The PIR Motion Sensor operates, but the base station does not respond.** Check the sensor switch settings (Refer to Instruction Manual - Assembly & Setup) .

184*254mm

WIRELESS SOLAR DRIVEWAY ALARM

INSTRUCTION MANUAL MODEL:MC-004



eMACROS was founded in 2012, the brainchild of a group of friends who previously designed Motorola products. Fast forward a few years and we are now the industry leader in home intercom and security products.

Our vision is to create a global world leader in home intercom solutions and products. We design and engineer intelligent residential home solution and intercom systems. Our company philosophy is to direct our efforts based on our client's wishes.

We want you to have the best possible experience with our products. We also offer superior customer service to address damaged or defective products.

If you have any questions, please contact us at:

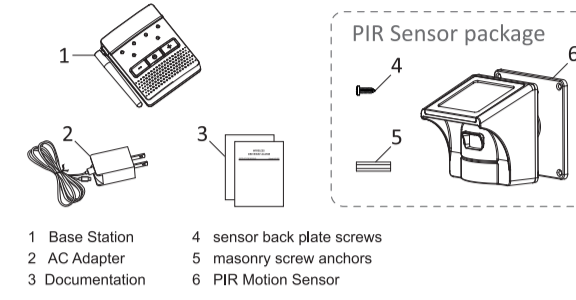
✉ Macross.service@outlook.com, we will assist you as quickly as possible.

🌐 www.emacros.com

Overview

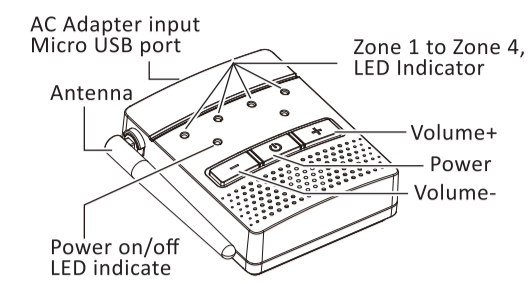
The Wireless Motion Alert has a range of up to 1/2 mile (800 meters). It uses a Passive Infrared (PIR) Motion Sensor to detect movement of people and vehicles while allowing small animals to pass through undetected. The Base Station is powered by an AC adapter, it can also run on 4AA batteries as backup in case of power outage for 2 weeks.

What's in the box



Operation & Features

1. Base Station



On/Off

To turn the Base Station on or off, hold down the Power button until you hear the on/off tone. The red power light will illuminate on #3 when the Base Station is on.

Volume

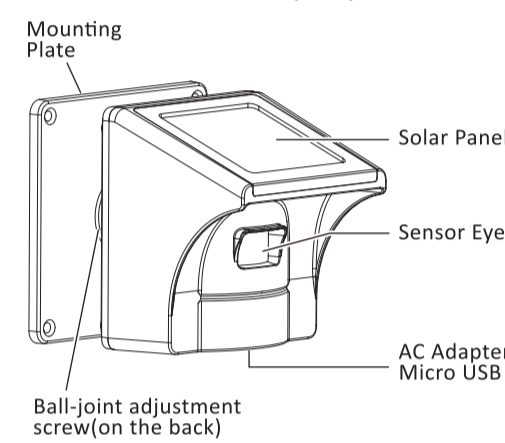
The Base Station is equipped with adjustable Volume +/- controls. The lowest volume setting mutes the volume. Volume adjustments will be heard on subsequent alarm activations, not

while adjustments are being made. Powering off the base station will reset the volume to the factory setting.

Zone/Line 1 to Zone/Line 4 LED Indicators

When motion is detected the corresponding Zone LED indicator will flash.

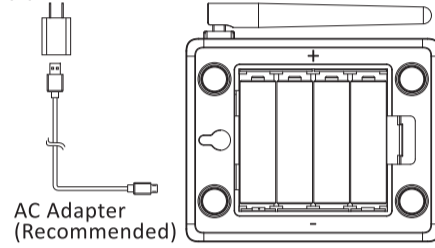
2. Passive Infra-Red(PIR) Motion Sensor



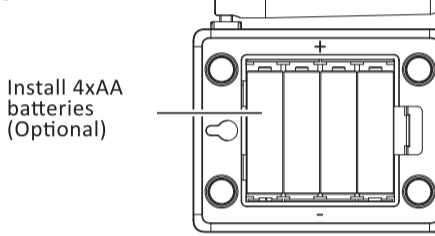
Assembly & Setting

Base Station:

a. Connect the Micro USB cable to the USB port on the base station to use the AC Adapter to supply power.



b. Base Station can also run on (4)AA batteries for up to 2 weeks, as backup in case of power outage.



PIR Motion Sensor:

c. Before installing the PIR Sensor, recharge the sensor (with 18650 battery attached) using the AC adapter to ensure a full charge. The blue light will illuminate while charging. The blue light will turn off once the battery is fully charged.

Note: The sensor has been tested several times in the factory. If the blue light wont illuminate, the battery may be fully charged, you can install it directly.

d. High / Low / Off Switch: First, open the black silicone seal cap at the bottom of the PIR Motion Sensor, then turn on the sensor by switching to High or Low. Set the detection range to High (30feet), Low (20 feet) , or turn sensor Off.

Note: False alarms are minimized by adjusting the sensitivity of the sensor to "Low".

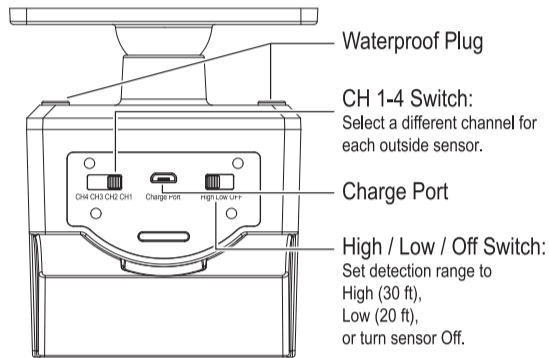
e. CH 1-4 Switch: Select a different channel for each outside sensor. If installing multiple PIR Motion Sensors, ensure that each sensor is set to a different Channel/Zone.

Note: Each Separate channel uses an unique chime, allowing you to match different chimes with different channels.

f. Test the PIR Motion Sensor by waving your hand in front of the sensor. The Base Station will

produce a unique tone based upon the sensor's setting.

g. When detecting movements, a sensor eye will flash red only when assigned to lines 1 and 2, not lines 3 or 4.

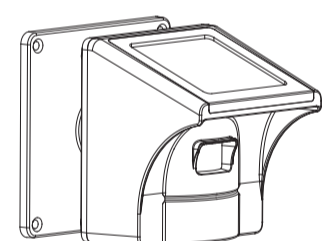


h. Low battery prompt:

1. When a sensor battery is low, the base station will say "Channe#1/2/3/4 power low, please charge" and the corresponding sensor Zone/Line LED indicator will flash.

2. When the Base Station battery is low the red power LED indicator will flash.

正面



PIR Motion Sensor Installation

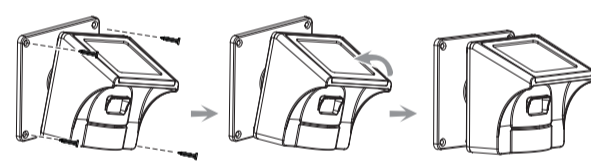
a. Mount the waterproof PIR Motion Sensor vertically on a solid surface 3-5 feet (1-1.5m) above the ground (rotate sensor to access screw holes). The sensor should be able to swivel as needed. Position the sensor to avoid direct sunlight shining on the sensor eye while simultaneously keeping the solar cell facing upward.



Please mount the motion sensor 3 to 4ft above the ground.



Please point the sensor in an environment free from limbs, falling leaves, or other items affected by wind which may trigger a false alarm.



Vehicle Alert Installation:

The best mounting position for detecting vehicles is about 4 feet (1.2m)high. Between 0-30 feet (0-9m) from the road and The PIR sensor detects the movements with heat sources. Please adjust the sensor eye with horizontal angle to the engine of the car.

Note : The sensors operate best in the -4F to 140F degree range. The sensors will not work properly out of this temperature range.



Install the sensor high enough off the ground to prevent false alarms from dirt and small animals.



Point the sensor eye away from direct or reflected sunlight to avoid false alarms.

Troubleshooting

• **The PIR Motion Sensor operates, but the base station does not respond.**

Check the sensor switch settings (Assembly & Setting) and make sure the sensor and base in the valid 1/2 mile range.

• **PIR Motion Sensor is detecting motion only part of the time.**

Set the PIR Sensor Switch to High sensitivity setting. To detect vehicles, The PIR sensor detects the movements with heat sources. Please adjust the sensor eye with horizontal angle to the engine of the car. Swivel the sensor to obtain the best line of sight to a vehicle.

• **The system is giving false alarms.**

Check for moving tree branches or insects in the sensor window and remove as necessary. Check the Sensor Switches on the PIR Motion Sensor (Assembly & Setting). Ensure that sunlight is not shining directly onto the sensor eye.

• **The system is not getting expected transmission range.**

Ensure that the PIR Motion Sensors are vertically aligned, not attached to the far side of a tree, and away from metal objects. Ensure that the Base Station has the clearest possible line of site to the sensors. The fewer objects between the devices, the longer the range.

Limited 24 months Warranty

EXCEPT AS PROVIDED HEREIN, SELLER MAKES NO EXPRESS WARRANTIES AND ANY IMPLIED WARRANTIES, INCLUDING THOSE OF MERCHANTABILITY AND FITNESS FOR A PARTICULAR PURPOSE, ARE LIMITED IN DURATION TO THE DURATION OF THE WRITTEN LIMITED WARRANTIES CONTAINED HEREIN, EXCEPT AS PROVIDED HEREIN, SELLER SHALL HAVE NO LIABILITY OR RESPONSIBILITY TO CUSTOMER OR ANY OTHER PERSON OR ENTITY WITH RESPECT TO ANY LIABILITY, LOSS OR DAMAGE CAUSED DIRECTLY OR INDIRECTLY BY USE OR PERFORMANCE OF THE PRODUCT OR ARISING OUT OF ANY BREACH OF THIS WARRANTY, INCLUDING, BUT NOT LIMITED TO ANY DAMAGES RESULTING FROM INCONVENIENCE,

LOSS OF TIME, DATA, PROPERTY, REVENUE, OR PROFIT OR ANY INDIRECT, SPECIAL, INCIDENTAL, OR CONSEQUENTIAL DAMAGES, EVEN IF SELLER HAS BEEN ADVISED OF THE POSSIBILITY OF SUCH DAMAGES.

In the event of a product defect during the warranty period, contact the Seller to obtain an RBM#, and then return the product, along with the sales receipt as proof of purchase date, to Seller. The Seller will, at its option either correct the defect by product repair without charge for parts and labor; replace the product with one of the same or similar design or refund the purchase price.

All replaced parts and products and refunded products become the property of the Seller. New or reconditioned parts and products may be used in the performance of warranty service. Repaired or replaced parts and products are warranted for the remainder of the original warranty period. You will be

charged for repairs on products no longer covered by warranty.

For all returns, please write down the RBM# and return date on the outside of the package. This will speed up the process of handling your return and issuing a refund or providing you with a replacement.

Refunds are not issued for products no longer covered by warranty. The warranty will not cover replacements in cases where damage or failure is caused by, or attributable to:

- (a) acts of God, abuse, accident, misuse, improper abnormal usage, failure to follow instructions, improper installation or maintenance, alteration, lightning or other instance of excess voltage or current,
- (b) any repairs other than those provided by the Seller,
- (c) consumables such as fuses or batteries,
- (d) cosmetic damage,
- (e) transportation, shipping or insurance costs,
- (f) or costs of product removal, installation, set-up, service adjustment or reinstallation.

Our goal is for you to have the best possible experience with Hosmart. We appreciate receiving comments on any aspect of your experience with Hosmart or our products. Please contact us with any problems, prior

to leaving any online feedback, so that we may address your concern. We guarantee your complete satisfaction for this transaction. Please note that our office hours are 9:00 am to 5:00 pm (GMT+8) Monday through Friday. Offices are closed Saturday, Sunday and public holidays. We apologize for any late replies during holidays.

FCC STATEMENT

Power:5V DC 1000mA
Backup Battery: DC (4)AA for the Base Station
FCCID: 2AJEM-MC004
This equipment has been tested and found to comply with the limits for a Class B digital device, pursuant to Part 15 of the FCC Rules. These limits are designed to provide reasonable protection against harmful interference in a residential installation. This equipment generates uses and can radiate radio frequency energy and, if not installed and used in accordance with the instructions, may cause harmful interference to radio communications. However, there is no guarantee that interference will not occur in a particular installation. If this equipment does cause harmful interference to radio or television reception, which can be determined by turning the equipment off and on, the user is encouraged to try to correct the interference by one or more of the following measures:
-- Reorient or relocate the receiving antenna.
-- Increase the separation between the equipment and receiver.
-- Connect the equipment into an outlet on a circuit different from that to which the receiver is connected.
-- Consult the dealer or an experienced radio/TV technician for help.

This device complies with part 15 of the FCC Rules. Operation is subject to the following two conditions:
(1) This device may not cause harmful interference, and
(2) this device must accept any interference received, including interference that may cause undesired operation.

Changes or modifications not expressly approved by the party responsible for compliance could void the user's authority to operate the equipment.

- This radio is designed for and classified as "General population/uncontrolled Use"
- DO NOT operate the radio without a proper antenna attached, as this may damage the radio and may also cause you to exceed RF exposure limits. A proper antenna is the antenna supplied with this radio by the manufacturer or an antenna specifically authorized by the manufacturer for use with this radio, and the antenna gain shall not exceed 2dBi by the manufacturer declared.
- DO NOT transmit for more than 50% of total radio use time, more than 50% of the time can cause RF exposure compliance requirements to be exceeded.
- During operation, the separation distance between user and the antenna shall be at least 20cm, this separation distance will ensure that there is sufficient distance from a properly installed externally-mounted antenna to satisfy the RF exposure requirements
- During transmissions, your radio generates RF energy that can possibly cause interference with other devices or systems. To avoid such interference, turn off the radio in areas where signs are posted to do so. DO NOT operate the transmitter in areas that are sensitive to electromagnetic radiation such as hospitals, aircraft, and blasting sites.

This product produced by:
Macross Microelectronics (HK) LIMIT
FLAT/RM KY001 UNIT 3 27/F HO KING COMM CENTRE
NO.2-16FA YEEN STREET MONGKOK KL

背面

展开尺寸：360*240mm

封底

封面

正面

A letter from eMACROS



A letter from eMACROS

Dear customers,
Thank you for choosing eMacros, we provide lifetime warranty and technical support for our customers. If you have any problems, please contact us by navigating to: www.emacros.com, then click **Contact Us**, we will assist you as soon as possible.
You can also email us :
✉ macross.service@outlook.com
Or Search for [@emacross](https://www.facebook.com/emacross) to find our page and get a rapid response service.
📘 : <https://www.facebook.com/emacrossofficial/>
We guarantee your complete satisfaction for this purchase.

Best regards,
eMACROS Service Team

Are you happy with our product? 😊
Please text: Hi eMacros, I like it, my order number is *** to our email: macross.service@outlook.com or contact us via Facebook page : [@emacross](https://www.facebook.com/emacross), you will enjoy our VIP treatment.
🎁 Free trial on our new products
🎁 VIP only coupon on promotions
🎁 Free birthday gift for VIP

Not happy? 😞
Please contact us if you have any concerns about the product, prior to leaving any online feedback, so that we may address your concern as quickly as possible. Our customer service support will work hard to put a smile back in your face.
🔄 Resend one new replacement
💰 100% full refund

6

FCC Statement

This equipment has been tested and found to comply with the limits for a Class B digital device, pursuant to Part 15 of the FCC Rules. These limits are designed to provide reasonable protection against harmful interference in a residential installation. This equipment generates uses and can radiate radio frequency energy and, if not installed and used in accordance with the instructions, may cause harmful interference to radio communications. However, there is no guarantee that interference will not occur in a particular installation. If this equipment does cause harmful interference to radio or television reception, which can be determined by turning the equipment off and on, the user is encouraged to try to correct the interference by one or more of the following measures:
-- Reorient or relocate the receiving antenna.
-- Increase the separation between the equipment and receiver.
-- Connect the equipment into an outlet on a circuit different from that to which the receiver is connected.
-- Consult the dealer or an experienced radio/TV technician for help.
This device complies with part 15 of the FCC Rules. Operation is subject to the following two conditions: (1) This device may not cause harmful interference, and (2) this device must accept any interference received, including interference that may cause undesired operation. Changes or modifications not expressly approved by the party responsible for compliance could void the user's authority to operate the equipment.

5

1/2 Mile Solar Driveway Alarm

INSTRUCTION MANUAL MODEL:BT274



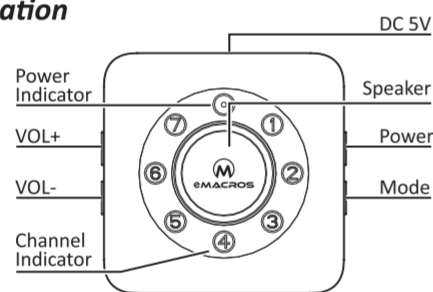
Note: BT274A is the receiving part of BT274 and BT274B is the transmitting part of BT274.

Thank you for choosing us, we provide lifetime warranty and technical support, if you have any problems, please email us at macross.service@outlook.com.
www.emacros.com

背面

Features

Base station



Base Station Functional Description

Power

Press the Power button once to turn on the base station, the red power indicator LED will light up. Press and hold the Power button for 3S to turn off the base station.

Mode(How to change the channel/tone)

Step 1. Press and hold the Mode button for 3S enter the pairing mode.
Step 2. Press the Mode button once to select the channel number during pairing mode.

VOL+/VOL-

Press the VOL+ button to increase the volume level of based station.
Press the VOL- button to decrease the volume level of based station.

Channel Indicators

When motion is detected the corresponding channel LED will flash.

Low Battery prompt

a. When the battery level of Solar Driveway Alarm is low, the base station will prompt the "channel 1 or channel 2/3/4/5/6/7 power low,

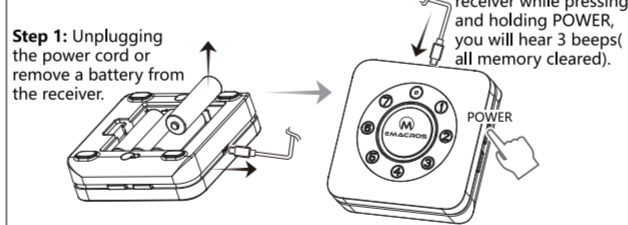
1

please charge".
b. When the battery of base station is low, the red power LED will flash and prompt "base power low".
Note:
a. We recommend using the AC adapter to provide the power supply to Base station and the 4 AA batteries as backup in case of power outage for about 2 weeks.
b. 7 classic melodies optional.

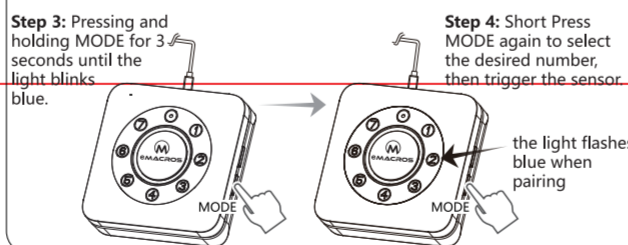
Switch different channels to get a different ringtone

- 1) First, unplugging the power cord or remove a battery from the receiver.
- 2) Plugging in the receiver while long pressing POWER, you will hear 3 beeps, all memory is cleared.
- 3) Holding the "mode" button until a number selection flashes.
- 4) Single pressing the mode button to the desired chime and then activate a sensor to "set" the chime to that device.

First clear the pairing memory

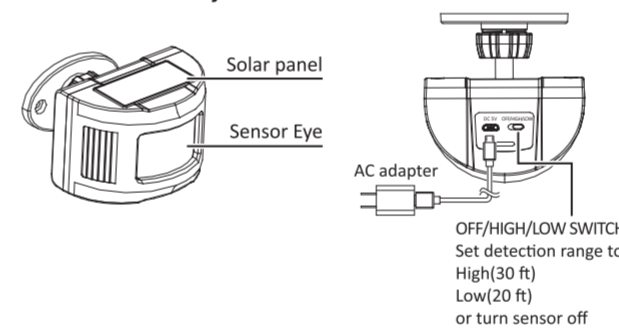


Pair the receiver and sensor



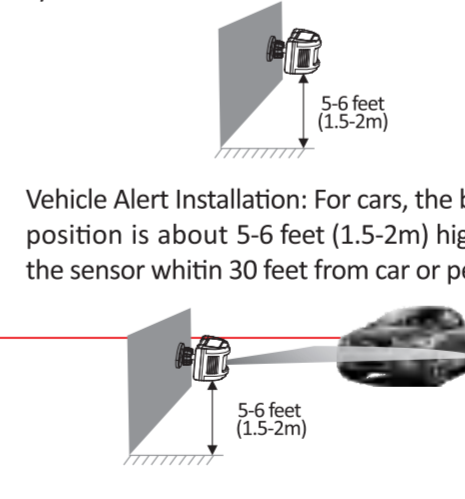
2

Solar Driveway Sensor



PIR MOTION SENSOR INSTALLATION:

Mount PIR Motion Sensor horizontally on solid surface 5-6 feet (1.5-2m) off the ground and within 1/2 mile of Base Station (rotate sensor to access screw holes). Unit should be able to swivel as needed.
Note: Keep PIR Motion Sensor away from metal objects. Do not mount PIR Motion Sensor in direct sunlight, near moving tree branches, or in the path of a sprinkler system.



3

Troubleshooting

1. The base station does not work

Check the AC Adapter of base station if it is ok. Check the Battery might be low and replace it.

2. Short operating range

There might be too many objects between the Base station and the Solar Motion Sensor. Try relocating objects or change the location of the Based station and Sensor.
Check the Battery might be low charge it or contact us to replace with a new sensor.

3. The system is giving false alarms

Check for moving tree branches or insects in the sensor window and remove as necessary. Ensure that sunlight is not shining directly onto the sensor eye.

Technical parameters

* Wireless Frequency : 433.92MHz FSK

* Wireless Transmission Range
Driveway Alarm : 1/2Mile
Driveway Alarm detection Range : 30FT (9M)
Driveway Alarm detection Angel : 120°

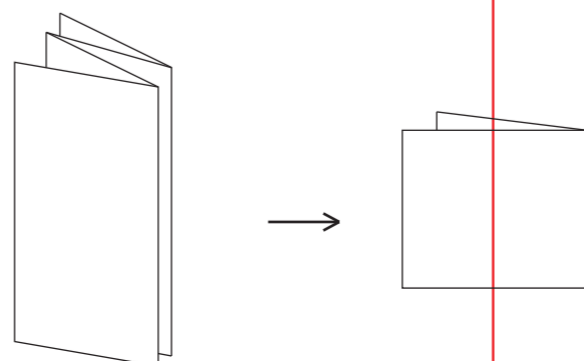
* Battery Type

Base Station : 4*1.5V AA Batteries
Solar Driveway Alarm : 3.7V/2200mAH

* Working Temperature Range
-20°C -- 60°C (-4°F -- 140°F)

4

展开尺寸: 360*180mm
成型尺寸: 90*90mm





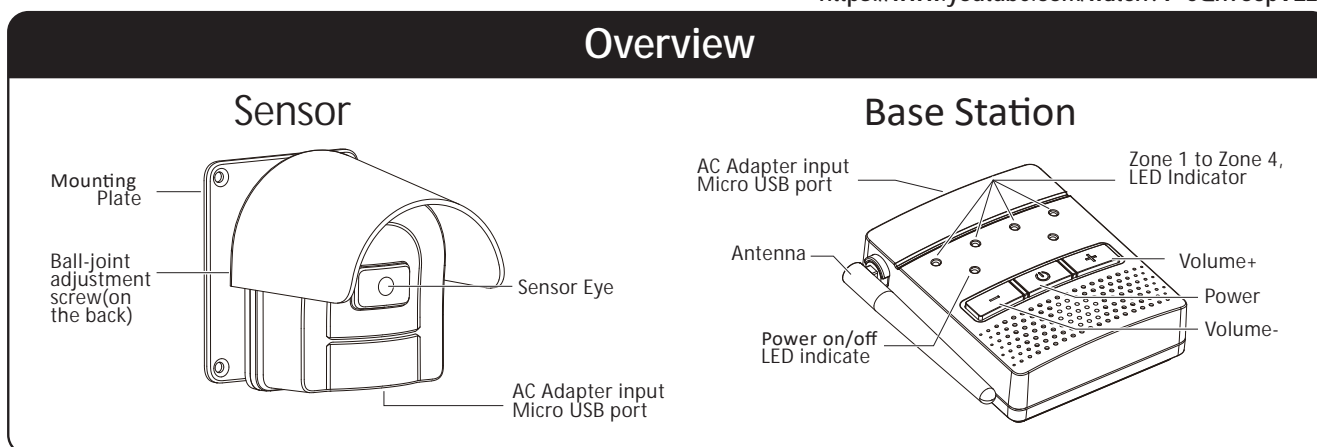
HY-001

Quick Start Guide

Video Link

<https://www.youtube.com/watch?v=6Qn9o3pVL2o>

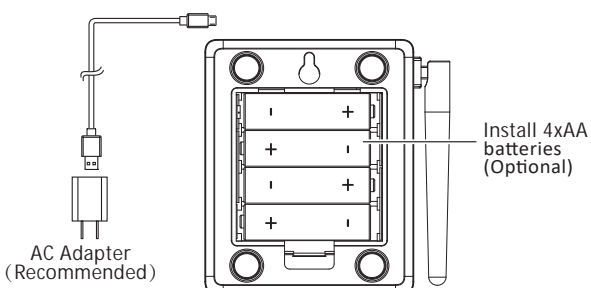
Overview



Powering and Pairing Sensor and Receiver

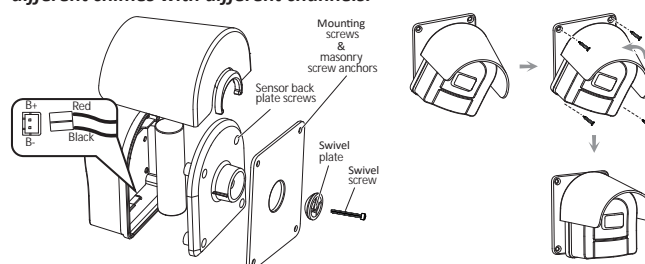
Base Station

- (1) Plug the Base Station into an outlet using the AC adapter. Receiver can also run on batteries as backup in case of power outage for 2 weeks.
- (2) To turn the Base Station on or off, hold down the Power button until you hear the on/off tone.
- (3) Adjust the Base Station volume as needed, volume adjustments will be heard on subsequent alarm activations, not while adjustments are being made. Powering off the base station will reset the volume to the factory setting.



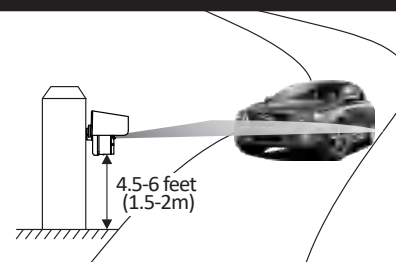
Sensor

- (4) Plug the small battery wire into the connector. Align notches to plug. (Red + /Black -)
- (5) Before mounting the PIR sensor, recharge the sensor using the AC adapter to ensure a full charge. The blue light will illuminate while charging. The blue light will turn off once the battery is fully charged.
Note: The sensor has been tested several times in the factory. If the blue light wont illuminate, the battery may be fully charged, you can install it directly.
- (6) Test the PIR Motion Sensor by waving your hand in front of the sensor. The Base Station will produce a unique tone based upon the sensors channel setting. **When detecting movements, a sensor wil flash red only when assigned to lines 1 and 2, not lines 3 or 4.**
Note: Each separate channel uses an unique chime, allowing you to match different chimes with different channels.



Installing the Sensor

- 1) Mount the PIR Motion Sensor vertically 4.5-6 feet (1.5-2m) above the ground on a solid surface (i.e. a wall, wooden post or tree) with the sensor eye pointed straight out over the area you wish to cover. (rotate sensor to access screw holes). The sensor should be able to swivel as needed.
- 2) Vehicle Alert Installation: The best mounting position is about 4.5-6 feet (1.5-2m) high. The PIR sensor detects the movements with heat sources; please adjust the sensor eye with horizontal angle to the engine of the car.



Troubleshooting

- **The PIR Motion Sensor operates, but the base station does not respond.** Check the sensor switch settings (Assembly & Setting) and make sure the battery wire is securely plugged into the connector.