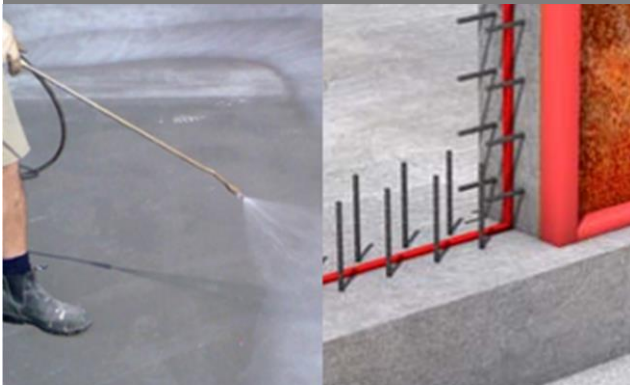


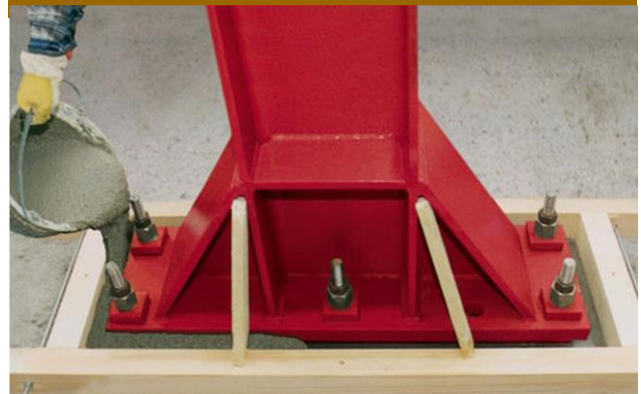
COMPLETE CONCRETE CONSTRUCTION CHEMICALS RANGE



Concreting Chemicals



Grouts & Adhesives



Joint Sealants



Concrete Repair & Level



Waterproof Membranes



Floor Sealers & Coatings



Concrete World Industries Pty Limited

2-4 Rosilyn Street, Dubbo, NSW
Unit 2/4 Barrett Court, Orange, NSW

☎ (02) 6885 6876 sales@cwid.com.au
☎ (02) 6362 0080 orange@cwid.com.au

Table of Contents

Formwork & Tilt Panel Release Agents

Surface Retarders & “Aliphatic Alcohol” Finishing Aids

Curing Compounds & Curing / Slab Moisture Control Agents

Concrete Fibres for Plastic Crack Control

Concrete Chemical Admixtures & Workability & Set Enhancers

Waterproofing Admix - “Crystalline” Enhancement of Self-healing

Chemical Anchoring Adhesives (& pourable grades - see epoxy grouts)

Cementitious Grouts (*Flowable & Dry Pack*)

Epoxy Grouts & Resin Crack Injection

Epoxy Adhesives, Mortars & Bonding Agents

Structural Concrete Repair Mortars (Trowel & Pour Grades)

Reinforcement Primers & Bonding Agents (for Concrete Repairs)

Cementitious Floor Levellers (Underlayment & Industrial-Traffic)

Epoxy High Build Protective Coating

Trowel Epoxy Patching & Flowable Bedding System

Liquid Floor Sealers & Chemical Densifier-Hardeners

Floor Coatings – High Build Epoxy “Coloured”

Generic Polyurethane Joint Sealants

Traffic & Chemical Grade Polyurethane & Silicone Joint Sealant

Generic & Sanitary Grade Silicone Sealants

Foam Jointing, Backer Rods & Gap Filler

Waterstops – Construction Joint Waterproofing (Swellable types)

PVC Waterbars for CJ & EJ Waterproofing (Cast-in Centre & Rear)

Joint “Bandage” Waterproofing – Remedial (Positive Side)

Waterproofing - Liquid & Cementitious Membranes, inc for Undertiles

Waterproofing of Facades – Water Repellents

Sealant Estimating – Volumes for Different Joint Sizes


Cementitious Grout & Floor Levellers (Volume Estimating)

Grout/Mortar Mixers, Application Equipment, Hand Tools & Consumables

Formwork & Tilt Release Agents

Formol

10L stocked & 205 Litre Drums (to order)

Form release agent hydrocarbon based chemical for construction site applications – Timber, steel and fibreglass moulds. Refer also  “Nox-crete Release Agent #10”

Silcoseal Select

5 Gal. / 19 Litre

Bondbreaker / Curing system for tilt up, lift slab and precast construction. Improved formulation, does not contain wax or hydrocarbon resins.

Surface Retarders & Finishing Aid

Rugasol®-C

10L stocked & 205 Litre Drums (to order)

Liquid surface retarder for Horizontal concrete use. Produces roughened Construction Joints and exposed aggregate concrete finishes. Spray applied.

Rugasol®-MH

10 Litre Pails

Gel surface retarder for formwork. Brush - paint applied directly onto formwork and moulds – horizontal and vertical use. Apply multiple build coats.

Sika® Film

10L stocked & 205 Litre Drums (to order)

Moisture evaporation retarder and finishing aid for hot weather concrete placement and better control during finishing.

Dilute with water. Fine mist spray apply.

Contains a blue fugitive dye.

1 Litre of Sika Film will yield 10 Litres when diluted, which will cover an area of approximately 40-100m².



Curing Compounds & Curing / Moisture Control

CWI Concrete Curing Compound

20 Litres

Water based for general concrete curing applications – Clear drying.

Good economy. Accepts other trades after cleaning to remove film residues.

Sika CureCrete

10L stocked & 205 Litre Drums (to order)

Water based good efficiency acrylic based curing compound, clear drying.

Fosroc® Concure A99

20L & 205 Litre Drums (to order only)

Water based high efficiency acrylic based curing compound, clear drying.

Efficiency = AS3799-1998

X200 Densi-Proof™

15 & 200 Litre (to order only)

1 Component, spray on penetrating multi-performance concrete curing, waterproofing and protection system for new and existing concrete surfaces. Suitable as a curing mechanism instead of water ponding in new concrete applications, improving concrete strength, waterproofing properties, density and hardness. Use on a horizontal or vertical substrates. Trafficable in 2 hours.

X200 Densi-Proof™ provides an effective moisture barrier for impervious floor coverings and coatings. Conforms to the moisture suppressant requirements as per AS1884-2012.

Refer also X220 Moisture-Fix™

Compatible with most subsequent flooring and coating systems.

(Note: refer the full Product Data Sheet for important notes and manufacturer's application advice)



Concrete Fibres for Plastic Crack Control

Sika®-Confibre 19F

0.9Kg degradable bags – 10 per box

Fibrillated PP fibres 19mm. Plastic shrinkage crack control in new concrete. Add 1 bag per cubic metre (m³) of pre-mixed concrete. Other synthetic Macro & Micro PP fibres available on request.



Concrete Chemical Admixtures

Sika Specialty Admixture Range

10, 205 & 1000Ltr Units

Concrete World can supply a wide range of chemical and powder form admixtures to suit your project and site handling requirements.

Admixture products include set retarders and accelerators, water reducers, superplasticisers, masonry production, corrosion inhibiting, waterproofing and grout mix fluidifiers, underwater/anti-washout additives.

Waterproofing Admix

Xypex® Admix C-1000 NF

5 x 3kg soluble bags – 15kg bucket

Cementitious Crystalline technology, waterproofing admix for concrete.

Typical 1% powder addition at batching by weight of binder.

Sika® WT-200P

6 x 1.75Kg soluble bags – 10.5Kg bucket

Cementitious Crystalline technology, waterproofing admix for concrete.

Typical 1% powder addition at batching by weight of binder.

Chemical Anchoring Adhesives

ChemSet™ 101 Plus

750ml Cartridge

Fast Set Grade, anchoring adhesive POLYESTER, General Purpose, 750ml Jumbo pack.



ChemSet™ 801 XTREM XC²

750ml Cartridge

Fast Set Grade, anchoring adhesive VINYL ESTER, Heavy Duty, 750ml Jumbo pack.

ChemSet™ Reo 502

600ml Cartridge

Extra Heavy Duty anchoring adhesive EPOXY, 600ml cartridge + nozzle.

Also available – **ChemSet Universal Applicator Gun**, hole cleaning accessories etc

Sika Anchorfix®-1

300ml Cartridge

Fast Set Grade, Medium duty.

Use a trade quality cartridge caulk gun.

Also available – Heavy duty epoxy version for critical applications, **Sika Anchorfix 3+** - 250ml cartridge (to order)



Fast Curing Anchoring Adhesive

For standard applications with low to medium loads



Epoxy Grouts

Sikadur®-42HF

18Kg kit (9 Litres)

0.5 - 40mm gaps, highly flowable 2-Part multi-purpose 90MPa filled resin system for equipment base plate and hold-down anchor grouting applications.

Can also be used for filling static floor cracks, redundant bolt holes, small depressions in concrete floors – walk away, no substrate dampening and wet curing required.



Underwater Grouting: Similar to the *Sikadur*[®] 42HF properties, *Sikadur*[®]-53 is a high density, water displacing, fluid epoxy resin grout mixable with up to 30% extra clean dry *Sikadur* filler sand. Suitable for use in wet/underwater applications.

***Sikadur*[®]-42HP**

36Kg kit (16.9 Litres)

15 - 120mm gaps, flowable 3-Part aggregate filled, high performance epoxy grout for critical equipment grouting of machinery and rail base plates subject to vibrating/dynamic loads. 100MPa.

Not a CWI stocked Item – Allow 2-3 days



Epoxy Resin Crack Injection

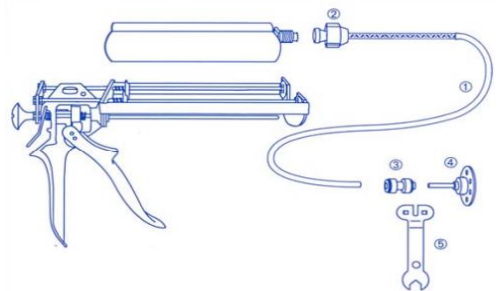
***Sikadur*[®]-52 Crack Injection System**

450ml Dual Cartridges

0.2 – 5mm gaps, low viscosity 2 part epoxy, dual cartridge & gun injection system for fine - 'static' crack, structural repair applications.

Extra components required to use the epoxy crack injection system (450ml Dual Cartridge) –

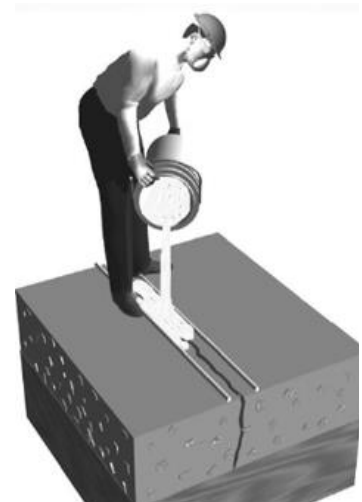
- **Injection Flanges (nipples)** – 50 per packet
- **Adaptors (connectors)**,
- **Static Mixer tubes** – cannot be reused or cleaned
- **Dual Hand Gun**
- ***Sikadur* 31 or *Sika Anchorfix* -1 paste adhesive/filler products**



***Sikadur*[®]-52** is also available in 3Kg (2.7Ltr) bulk size packaging for gravity fed 'static' crack repair-fill work on horizontal surfaces. Seal cracks from underside to prevent leakage where possible-accessible.

Use ***Sikadur*[®]-42HF** epoxy grout in situations greater than 5mm wide. Check to ensure cracks are not moving – *rigid cure*.

The epoxy surface can be broadcasted with ***Sikadur*[®] 501 Sand Part C** while still wet to cover the epoxy finish or for over-coating later on with epoxy coatings.

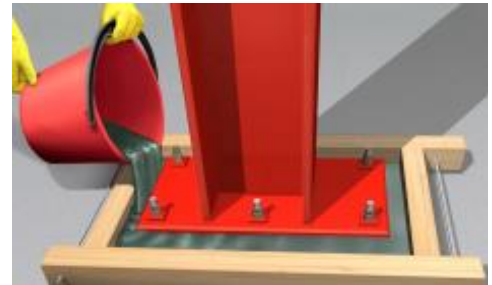


Cementitious Grouts

SikaGrout®-212HP

20Kg bag (11 Litres)

Good Flow, 10-100mm gaps, non-shrink high performance >70MPa. Pumpable. Grouting of structural & equipment base plates, cavities, recesses, anchor bolts. Suitable for form & pour void filling between precast segments and around pipe penetrations ≤100mm in thickness. Contains a maximum grain 2mm size aggregate. Use **SikaGrout®-HES** for rapid set - high early strength applications.



SikaGrout®-GP

20Kg bag (11.6 Litres flowable)

Flowable/Dry Pack, 10-100mm gaps, shrinkage compensated - Class A, >50MPa. Grouting of small base plates, panel voids, cavities, general recesses etc



SikaGrout®-HES

20Kg bag (9.5 Litres)

Flowable, 10-100mm gaps, rapid set high early strength (*even at low +5°C temperatures*), non-shrink >65MPa cementitious grout. High performance grouting of structural & equipment base plates, cavities, recesses, anchor bolts and around penetrations <100mm in thickness. Contains a maximum grain 2mm size aggregate.

SikaGrout®-Deep Pour

20Kg bag (10.5 Litres)

Flowable, 20-500mm gaps, non-shrink high performance >70MPa. Pumpable. Suitable for form & pour void filling between precast segments and around pipe penetrations >100mm in thickness. Contains a maximum grain size 5mm aggregate.



Tip: Do not use grouts for "unrestrained" concrete repairs. Refer to Concrete Repair & Leveller sections (use proprietary repair mortars and toppings)

Epoxy Adhesives, Mortars & Bonding Agents

Sikadur®-32 Long Pot Life

3 & 18 Litre Kits

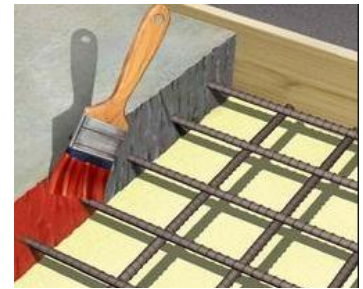
New to old concrete – 2 part epoxy bonding agent

Long open times for new concrete placement onto existing, prepared concrete, eg new toppings.

Suitable for conventional concrete repair work. Brushable.

No requirement to pre-saturate substrates.

Moisture tolerant – damp concrete.



Sikadur®-31

6Kg kit, A+B (3.15 Litres)

Epoxy mortar paste adhesive, repair mortar, 2-30mm builds – coarser paste grade.

Suitable for bonding metal to concrete and concrete to concrete in critical bonding applications. Eg. Corner repairs. Suitable on damp concrete and masonry substrates.



Sikadur®-33

Handy Mix 1:1, 20 Litre kit (A+B)

Epoxy mortar paste adhesive, thin levelling repair mortar, 0.5-10mm builds.

Finer, smooth paste grade. Non sag, suitable for overhead applications.

Can be used on damp concrete.

MEGAPOXY-P1

Handy Mix 1:1, 4Ltr & 20 Ltr kits (A+B)

Epoxy mortar paste adhesive and multi-purpose gap filler.



Structural Concrete Repair Mortars

Sika Monotop®-352NFG

20Kg bag (12.8Litres)

33MPa strength, 4-75mm, Light Weight, Trowellable, Cementitious High Build Structural Repair Mortar. Suitable for overhead and vertical surface repairs. Not recommended for traffic area repairs.



Sika Monotop®-412NFG

20Kg bag (10.9 Litres)

50MPa strength, 6-50mm, Trowellable Cementitious High Build Structural Repair Mortar. Can be used for external pavement (traffic) and ramping, kerb/wall patching. Normal set characteristics – good working time. Tested for application under dynamic load conditions (eg functioning Bridge Repairs – use with *SikaTop®-110 EpoCem* bonding agent). Use *Sika Monotop®-612N* for higher strength, 70MPa repair applications.

Sika Monotop®-436N

20Kg bag (10.5 Litres)

70MPa, 25-300mm, Pourable Cementitious Structural Repair Mortar containing a max aggregate size of 6mm. Self-compacting (form & pour) shrinkage compensated micro-concrete. eg, Concrete pour defects, columns, piers, rebuilding pump bases, tank ring-beams, floor patching, low cover repairs, wall and kerb re-build work.



SikaQuick®-2500

20Kg bag (9 Litres)

100MPa, 5-30mm, Rapid Strength Development Pavement Floor Patch Repair Mortar. Also extendable with clean 10mm aggregate for even deeper repairs up to 100mm. Trowellable - workable consistency.

Sika Monotop®-723N

20Kg bag (11.7 Litres)

32MPa, 1-5mm, Thin Build, Trowel Grade Structural Render / Fairing Cementitious Repair Mortar. A suitable “low cover” concrete repair option.

Sika Monotop®-FC

15Kg bag (7-8 Litres)

0-3mm, Thin Trowel Grade Non-Structural Cosmetic Cementitious Repair Mortar.

Reinforcement Primers & Bonding Agents

Sika Monotop®-910N

5Kg Pail

1 Component cementitious bonding agent 'slurry mix' for *Sika Monotop®* repair and other cement based mortars – apply mortars wet on wet.

Also provides corrosion protection for prepared steel reinforcement bar – 2 coats, brushable.



Sikatop®-110 EpoCem

8Kg Bucket Kit

3 Component cement/epoxy based 'extended open time' bonding agent.

Also provides corrosion protection for steel reinforcement in corrosive service environments and 'low cover' construction and concrete repair situations. Brushable.

BondCrete

4 & 20 Litres

Versatile bonding, sealing & admix agent for non-critical building and renovation applications. Concentrated form for dilution.

Cementitious Floor Levellers

Sikafloor®-Level Top

20kg Bag (12 Litres)

2-30mm Cementitious floor leveller for interior use prior to the installation of commercial & domestic floor covering products.

Use with ***Sikafloor 01 Primer*** (diluted) on porous concrete surfaces.

Note: Product Application Conditions / Limitations - Substrate & Ambient temps +10°C min. / 35°C max



Sikafloor®-Rapid Patch

20kg Bag (12 Litres)

0 – 50mm Cementitious patching & ramping mortar for interior applications prior to the use of commercial & domestic floor covering products.

Sikafloor®-Level 30

20Kg Bag (11.1 Litres)

3-30mm Industrial traffic grade, self-smoothing 40Mpa cementitious floor leveller. Suitable for interior & exterior use, vehicle and forklift traffic.

Can be epoxy coated/or sealed after curing period of approximately 48 hours.

Use ***Sikafloor®-Level 30*** with ***Sikafloor 01 Primer*** on porous surfaces. Refer PDS.

Note: Application Conditions / Limitations - Substrate & Ambient temps +9°C min. / 30°C max

Epoxy High Build Protective Coating

(Available to order only)

Sikagard®-62

11.4Kg (Part A+B) of 12.55kg Kit (9.3L) – Add Pigment

Solvent free, heavy duty epoxy high build protective coating providing a hard wearing - abrasion and chemical resistant glossy film. Suitable for the protection of concrete and steel surfaces in primary and secondary containment applications.

Brush, roller and airless spray applied. Minimum 2 coats @150-200µm per coat.

Potable water - AS 4020:2005 Wide colour range.

Trowel Epoxy Patching & Flowable Bedding System

Sikafloor®-91

Epoxy Binder & Aggregate System

90MPa, 5-40mm, 3 Component epoxy resin binder/aggregate, easy-trowel mortar/floor repair screed system. Can be used for floor patching/screeding to falls, detailing work for drainage, including coving work.

Trowel Grade System components:-

Sikafloor 94, Part A - 20Kg Resin

Sikafloor 94, Part B - 10Kg Hardener

Sikafloor 506, pre-blended aggregate Part C – 20kg bags

Recommended Proportions: Part A 6kg, Part B 3kg, Part C 50kg

Primer: Sikafloor 94 neat Part A + B, brush/roller

Sealer: Sikafloor 94 neat Part A + B, brush/roller/trowel applied

Sikafloor 94 - Refer product below.



Sikafloor®-94

20Kg Part A & 10Kg Part B (Approx 27 Litres)

Low viscosity, solvent free epoxy primer and general epoxy binder system.

Economical, multi-use binder for producing filled trowel/levelling grade flooring mixes.

Sikadur®-31 & 41

6Kg kit (3.15 Litres)

Epoxy mortar paste adhesive, 2-30mm builds – coarser paste grade.

Sikadur®-41 - 5 to 60mm, high strength abrasion resistant epoxy patching mortar >60MPa. Mix **Sikadur®-31** (6Kg kit) with **Sikadur 501 Sand Part C** - 5kg.

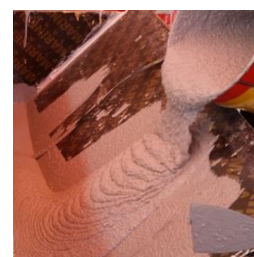
11Kg system weight (approx. 5.9 Litres yield)

Sikadur®-42 (au)

14.6Kg kit (7.3 Litres)

70MPa, 10-60mm, 3-Part aggregate filled, flowable – self compacting epoxy grout/general setting mortar for filling voids under plate work.

100MPa requirements: Refer **Sikadur®-42HP**, suitable for critical dynamic & vibration equipment loads and >100mm 'deep' applications if required - low exotherm and very low creep.



Liquid Floor Sealers & Densifier-Hardeners

CWI – Decorative Concrete Sealer, Base + Tint

19L + 1L tint

Coloured sealer for new or previously unsealed concrete. Suitable as a rejuvenation colour sealer for aged concrete floors following suitable preparation. Economical. Approximately 20 colours to choose from. The addition of **CWI Slip Resistant Additive** may also improve pedestrian safety.



CWI - Premium Decorative Sealer

20 Litre Drum

1 Component High Quality Clear, UV stabilised acrylic resin sealer designed to improve the cleanability and colour of decorative concrete finishes. The addition of **CWI Slip Resistant Additive** may improve pedestrian safety. Contact CWI for the full range of Sealers, Primers, Cleaners and associated products.

Cementaid Brand:- Rokite PR* Grey Colours available

20 Litre Drums

Sika Brand:- Sikafloor®-CureHard 24

1 Component, clear liquid floor hardeners and densifiers. Suitable as an economical dustproofing solution for industrial concrete floors in warehouses. Improves the abrasion, stain and chemical resistance compared with untreated floors.

Not compatible with line marking paints.



X550 Carpark Warehouse™

15 & 200 Litre Drum (to order)

1 Component - silicate siliconate, water based formulation, applied to new and existing concrete giving an excellent cure regime. Reduces dusting of the concrete and also reduces tyre noise/tyre marking and staining from oil spills. Invisible finish, UV resistant and will not darken or yellow.



Compatible with line marking paints.

Floor Coatings – High Build Epoxy “Coloured”

Sikafloor®-264 & Sikafloor®-264T

2 Parts & Colour Pigment

Industrial & Decorative, heavy duty coloured epoxy floor coating system with option for textured finish and non-slip properties. Applied in 2 or more roll coats, suited for food production applications, automotive service workshops, warehouses, retail areas, wash & clean rooms, sporting stadiums, food halls, correctional facilities, laboratories etc.

Wide colour range available.

Also available - decorative “Flake Floor” all epoxy system with UV stabilised decorative clear top coats – refer Sikafloor®-169



High performance epoxy roll coat systems are recommended for application by experienced flooring contractors or commercial painters with suitable mechanical concrete preparation equipment

Generic Polyurethane Joint Sealants

Sikaflex®-Construction AP

Gun Grade – 600ml Ssg / 20 box

10-35mm wide wall & floor joints for general joint sealing applications. Economical version. Grey colour stocked.

Sikaflex®-PRO & SikaHyflex®-250 Façade

Gun Grade – 600ml Ssg

5-40mm wide wall & floor joints for high performance joint sealing.

Sikaflex®-PRO is available in concrete grey and wide range of colours (on request).

SikaHyflex®-250 Façade, +100%/-50% high movement. “Bubble free” curing.

The above sealant products are stocked in standard concrete Grey colour.

Sikaflex PRO is also available in a smaller 310ml cartridge size – grey / 12 per box.



Sikaflex®-400 Fire

Gun Grade – 600ml Ssg / 20 box

1 Part “Fire Rated” elastic PU joint sealant. Suitable for use in exterior & interior connection joints on porous and non-porous substrates. Joints up to +/-25% MF.

Sikaflex®-11FC

Gun Grade – 600ml Ssg / 20 box & 310ml Cart. / 12 box

1 Part elastic joint sealant & multi-purpose adhesive. Very good adhesion to most common construction materials. Durable joint sealing applications with up to +/-10% movement. Fast cure and pick resistant qualities. Prisons, Shopping centres etc

Traffic Grade Polyurethane & Silicone Joint Sealant

Sikaflex®-Tank N

Gun Grade – 600ml Ssg / 20 box

10-35mm wide, 35 Shore A polyurethane sealant for wall & floor joints demanding higher mechanical, chemical and trafficable features eg, water storage tanks and fuel depots, food production areas, warehouses and secondary containment chemical bunding applications.



Potable water approved - AS 4020:2005

(Optional: Use Sika Primer 3N for best adhesion/performance under stress)

****Sealant - Priming Notes**:** Use *Sika Primer 3N* on porous/dry/damp surfaces and where joint applications are under extra stress. Use *Sika Primer 3N* in water immersed service applications, including bonding to prepared stainless steel surfaces found in underwater/ marine environments. Use *Sika Primer 215* for bonding to PVC surfaces.

Joint Sealant Primer Selection Guide:

Substrate	Recommended pre-treatment	Flash-off time
Porous substrates	SikaPrimer®-3N	>30 min, <8 h

Substrate	Recommended pre-treatment	Flash-off time
Metals	Sika® Aktivator-205 ¹⁾	> 15 min, < 8 h
Coatings	SikaPrimer®-3N ²⁾	> 30 min, < 8 h
PVC	Sika® Aktivator-205 ¹⁾ SikaPrimer®-215 ³⁾	> 15 min, < 8 h > 30 min, < 8 h

- ¹⁾ Use Sika® Aktivator-205 for STP and Silicone based sealants
²⁾ Use SikaPrimer®-3N for PU based sealants (including i-Cure)
³⁾ Use SikaPrimer®-215 for PU based sealants (including i-Cure)

Fosroc® Nitoseal SC800

Gun Grade – 600ml Ssg / 12 box

Previously *Emer-Seal Roadseal* – Low Modulus Silicone Rubber Joint Sealant

High joint movement, +100%/-50%. Recessed joint sealing of Bridge decks and Car Parks. NSW RMS approved.

Generic & Sanitary Grade Silicone Sealants

Sikaseal® Kitchen & Bathroom

300ml Cartridge/12 box

Neutral curing, 1 Part sanitary grade silicone rubber sealant, mould resistant general gap filling joint applications (white). Other colours on request – lead times apply.

Sikaseal® Roof & Gutter Silicone Sealant

300ml Cartridge/12 box

Neutral curing, 1 Part multi-purpose silicone sealant, weather resistant general gap filling joint applications (transparent).

Foam Jointing, Backer Rods & Gap Fillers

Flexi Expansion Foam Joint Filler Rolls with adhesive (Sticky) backing & Zip - 25mtr rolls

50, 75, 100, 150, 200 and 300mm



Sika Foam Backer Rod Open Cell

Highly compressible round rods.

15mm x 150mtr roll

20mm x 100mtr roll

30mm x 60mtr roll

40mm x 30mtr roll

50mm x 20mtr roll



Sika Lightlon Rod Closed Cell Backer Rod

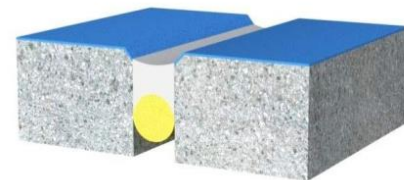
Firm backing and good water resistance round rod – limited compression. White.

6mm x 250mtr roll

10mm x 250mtr roll

20mm x 50mtr roll

30mm x 50mtr roll



Sika Boom®-AP

Aerosol Can – 750ml with Nozzle

Expanding polyurethane foam gap filler, high yield.

Can be cut, painted over. Not UV stable.



Waterstops - Construction Joint Waterproofing

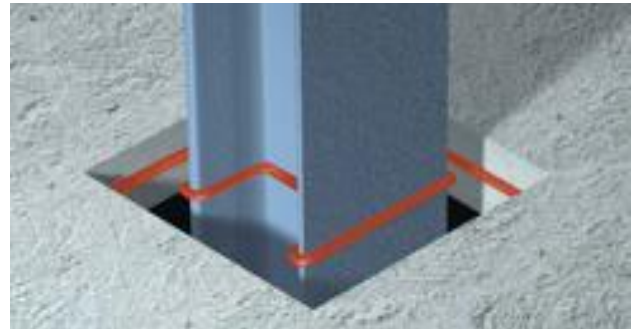
SikaSwell® S-2

Gun Grade – 600ml Ssg / 20 box

Hydrophilic polyurethane swellable sealant for new construction joint waterproofing applications, including waterproof detailing around penetrations in floor slabs and wall infills prior to concrete placement.

Minimum concrete cover is 25mm* for a 6mm bead size if placed off-centre.

(*Caution: A minimum Concrete Cover is required – review the PDS for further information/advice)



SikaSwell® S-2 is also the adhesive for the **SikaSwell® A&P Type Red & M (Marine) profile** products available in various sizes 20x5mm, 20x10mm & 25x7mm.

Observe increased adhesive consumption rates on roughened, undulating exposed aggregate surfaces.

SikaSwell®-A 2010 Red (20mm x 10mm)

10mtr rolls

Swellable joint profiles (Acrylic) for construction joint waterproofing in critical water retaining and other leakproof structures. Swells in contact with water. Suitable for sealing pipes and steelwork penetrations through walls and floor slabs.

Less concrete cover required - 80mm v 100mm (due to the lower swelling pressures)



Also available:- 20mm x 5mm size (20mtr roll) – SikaSwell® A 2005 Red

SikaSwell® S-2 sealant is the required adhesive for the **SikaSwell® A Profiles**

Flexible Waterbars for CJ & EJ Joint Waterproofing

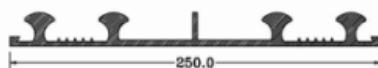
Sika® Waterbar

Various types - on request order only

Flexible PVC & specialised Chemical resistant TPE-R (Rubber) waterbars, including retrofit systems for use alongside (connected to) existing concrete structures. Weld on site.



Ribbed centre-bulb and base seal designs – prefab intersections available on request.



PVC Waterbar examples: **Sika Waterbar 025 Yellow** & **Sika Waterbar AR 25 Yellow** (20mtr length rolls)

***Long lead times may apply on special chemical resistant TPE-R products sourced from overseas*

Joint Waterproofing – Remedial (Positive Side)

Sikadur-Combiflex® SG System

Various Tape Widths (to order only)

Surface applied flexible, high performance tape & epoxy adhesive 'bandage' system for waterproofing water retaining structures, eg, water storage tanks and pools. Other applications include exposed deck "protected" car park joints, rooftops and below-ground concrete structures. Remedial waterproofing applications over moving construction / expansion joints and cracks.



Sikadur Combiflex®-SG tape widths:

2mm x 100mm x 25mtr rolls

2mm x 150mm x 25mtr rolls

2mm x 200mm x 25mtr rolls

2mm x 250mm x 25mtr rolls



Epoxy Adhesive - **Sikadur®-31** 6kg (A+B) Kit

Approvals: AS 4020:2005 in contact with drinking water

Note: *Sikadur-Combiflex®SG system is best applied by capable concrete remedial/waterproofing contractors due to the critical concrete preparation, use of 2-part epoxy and heat welding techniques required for successful installation. An appropriate design is required dependent on the type of service application, degree of expected movement, exposure to water-hydrostatic head pressures etc.*

Do not expose this system to direct vehicle traffic. The installation can be recessed into joints, looped for extra movement and covered (protected) with suitable steel plating.

Refer also to the manufacturer's product data sheet for more information.

Waterproofing – Liquid Applied Membranes

Sikatite®-BE

15 Litre Bucket

1 Component, Acrylic based Bitumen emulsion waterproofing membrane for protected/back filled service use eg Retaining walls. Allow approx 1.5Ltrs/m²/2 coats

Sikalastic®-1K

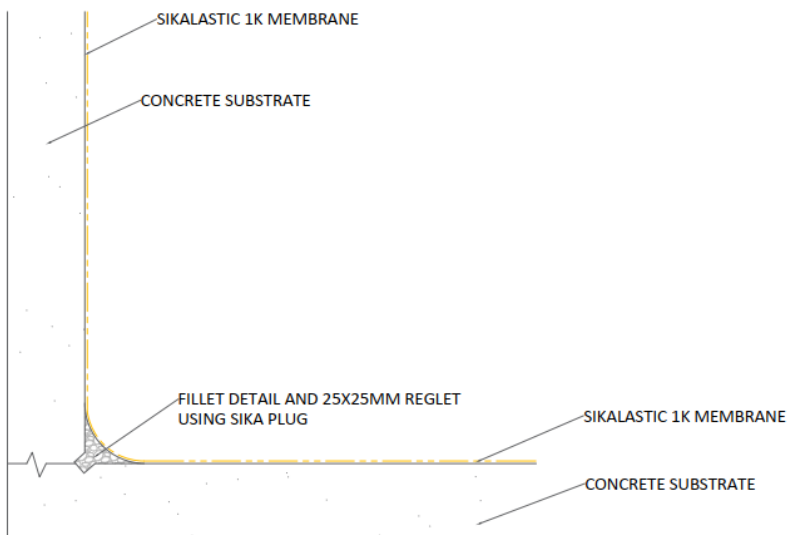
10kg bucket & 20Kg bag (1.2Kg/m²/per mm)

1 Component - flexible, fibre-reinforced, crack bridging, cementitious coating for waterproofing damp & new 'green' concrete. Suitable for use in negative pressure to 25mtrs eg. Basements
Brush, roller, trowel apply. Potable water approved for use in drinking water tanks.
General applications – 2 x 1mm coats (2mm)
Optimum performance – 2 layers (total 3-4mm)

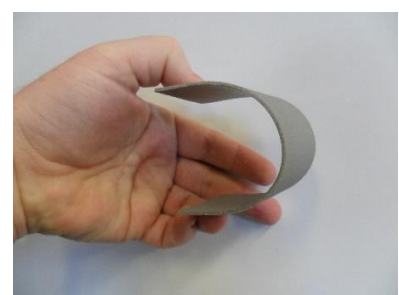


Use **Sika Plug (10kg)** rapid set plugging mortar for weeping cracks (external - cold joint repairs). Use a proprietary cementitious repair mortar like **Sika Monotop®412NFG** for constructing corner coving prior to waterproof coating application (see below).

Typical Leaking Concrete Water Tank – Internal Repair Detail (Empty tanks)



- **Apply over dampened surfaces**
- **Drinking Water Use:**
Allow 15 days cure time & a surface wash
- **Protect from Rain / Water contact for 48hours after application**
- **Good durability**



Higher Movement Areas: Install **Sika® SealTape S** – elastic Waterproof Tape with woven bonding mesh each side

Sikatite®-WPU (undertile)

15 Litre Bucket - Grey

Liquid 1 Component, Low VOC water based Polyurethane elastomeric Class III, waterproofing membrane for use in protected **wet area 'undertile'** bathroom applications. Compatible with most tile adhesives.

CTA Eco Prime WB – primer for porous surfaces, 5 Litres.

CTA Eco Prep n Prime – primer for glazed tiles, metals and smooth-hard surfaces, 4 Litres.

Aqua Blok™ Elasto-Joint Band - joint waterproof bandage, 150mm x 100mtr rolls. Tap Sleeves and internal/external corner pieces also available.

Schonox AB and iFIX® Waterproofing System (rapid undertile)

Watertight Bathrooms & Showers, Balconies, Podiums, Commercial Wet Areas – Rapid membrane assembly, instant Tile installation (after 1 hour membrane install)
Waterproof, crack bridging, sheet membrane system installed over a roller applied 2-Part waterproof adhesive.

- Suitable for internal and external applications.
- High Elongation, Class III Membrane to AS4858
- Compatible with most tile adhesives.



Training

Recommended prior to use



Double sided fleece laminations for rapid installation. Butt joint sealing tape and prefabricated corner & penetration pieces are also available.

Suitable surfaces: Concrete, sand/cement screeds, cement render, fibre cement sheeting, plaster board, fully grouted brickwork – abraded existing tiles and stone.

Item Code: 484369	Schonox AB 30mtr Roll
Item Code: 485888	Schonox ST Sealing Tape 50Mtr roll
Item Code: 525976	Schonox iFix Adhesive Kit 7.8kg
Item Code: 485883	Schonox ST EA (External Corner) 50/Box
Item Code: 485884	Schonox ST IC (Internal Corner) 50/Box
Item Code: 485881	Schonox ST D8 (12-24mm) 25/Box
Item Code: 485875	Schonox ST D15 (25-40mm) 25/Box
Item Code: 485877	Schonox ST D21 (35-50mm) 25/Box
Item Code: 485880	Schonox ST D65 (70-125mm) 25/Box
Item Code: 525560	Schonox iFix Tool Kit

Sikalastic®-560

15 Litre Grey & White (system to order only)

1 Component, eco-friendly, elastomeric liquid roof waterproofing membrane system suitable for new construction and refurbishment roofing projects.

Application onto a wide variety of surfaces. Highly elastic UV resistant membrane waterproofing of decks, roof tops, podiums, box gutters - not subject to heavy foot traffic. Can be reinforced with a 'fleece' fabric for improved durability.

The 'reinforced membrane' roofing system is best applied by competent Waterproofing Contractors



Sikalastic Fleece 120 - (Polyester) 1mtr x 50mtr roll



Waterproofing – Water Repellents

Sikagard®-703W

5 Litre Pail

Silane/Siloxane based liquid impregnation water repellent treatment for concrete and masonry **building facades** to protect against 'rain' water moisture ingress.

Invisible on drying. Treated surfaces are breathable.

Can be over-coated.



Solvent based system also available (*Sikagard 700S – 20Ltr*).



X200 Densi-Proof™

15 & 200 Litre (to order only)

1 Component, spray on - penetrating multi performance concrete curing, waterproofing and protection system for new and existing concrete surfaces. Suitable as a curing mechanism instead of water ponding in new concrete applications, improving concrete strength and waterproofing properties, overall surface density and hardness. Use on a horizontal or vertical substrates. Trafficable in 2 hours.

Compatible with most subsequent flooring and coating systems

(Note: refer the full PDS for important notes and manufacturer's application advice).

Mixing & Application Equipment

Cement Grout & Mortar Mixers

Mixing drill / spiral mixer – Heavy duty with variable speed, suitable for small batch mixing of grouts, floor levellers, repair/waterproofing cementitious mortars, etc. Thread adaptor available for drill attachment.



Sealant Sausage Gun – Manual Hand



Cartridge Dispensing Guns – Range to Suit



Industrial Spray Units – Hand Operated

Form oils, surface retarders, curing compounds and chemical floor hardeners



Hand Tools, Gloves, Cleaning Rags, Tape, Application Rollers



Sikaflex Estimating Chart

Quantities: a guide to Sikaflex-PRO quantities (for fillet work multiply metre runs per cartridge or 'unipac' by two).

Joint size in mm	Litre Sikaflex-PRO per metre run	Metre run per cartridge (310ml)	Metre run per 'unipac' (600 ml)
5 x 5	0.025	12.4	24
5 x 10	0.050	6.2	12
5 x 15	0.075	4.2	8.0
10 x 10	0.100	3.1	6.0
10 x 15	0.150	2.0	4.0
10 x 20	0.200	1.55	3.0
10 x 25	0.250	1.24	2.4
15 x 10	0.150	2.06	3.9
15 x 15	0.225	1.35	2.7
15 x 20	0.300	1.04	2.0
15 x 25	0.375	0.82	1.6
15 x 30	0.450	0.69	1.3
15 x 40	0.600	0.51	1.0
20 x 10	0.200	1.55	3.0
20 x 15	0.050	1.04	2.0
20 x 20	0.400	0.78	1.5
25 x 12.5	0.310	1.00	2.0
25 x 15	0.380	0.81	1.6
25 x 20	0.500	0.62	1.2
25 x 25	0.630	0.50	0.9
30 x 15	0.450	0.69	1.3
30 x 20	0.600	0.51	1.0
30 x 25	0.750	0.42	0.8
40 x 20	0.800	0.39	0.8
40 x 25	1.000	0.31	0.6
40 x 30	1.200	0.26	0.5

Cementitious Grout & Floor Leveller Estimating - Volume

The manufacturer's product data sheet should contain approx. mixed yield volume information (in Litres) per bag, based on a given water addition rate.

1 Litre of mixed material will cover a 1m² area @ 1mm thickness

A 10mm thickness requirement will require 10 Litres over a 1m² area

A 10mm thickness over 100m² will require 1,000 Litres of material (or 1.0m³)





Also Available from Concrete World Industries

- **Steel reinforcement** – Stock Bar, Steel Dowels, Mesh and Steel Processing – in house to your plan specifications
- **LVL, formwork & formply** – High quality Australian made
- **A wide range of Concreting accessories, tools and supplies**
- **Small machinery** – Trowel machines, generators, portable grout mixers
- **Cutting & Coring products & equipment**
- **Decorative Concrete** – Clear/Coloured sealers, stencils and Oxides
- **Prompt delivery service to site with HIAB equipped trucks**

