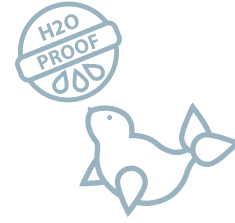


marmoleum[®] cinch loc seal



COLORS | INSPIRATION | ENVIRONMENT | INSTALLATION | CARE

creating better environments

Forbo
FLOORING SYSTEMS

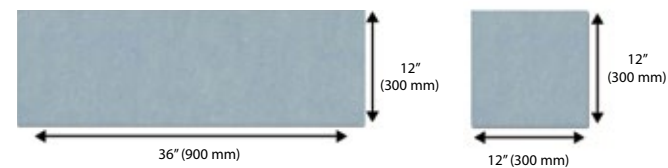
CREATE A BETTER ENVIRONMENT

fun to design, easy to install, beautiful, healthy, waterproof flooring

Creating beautiful, custom floors for your home is easy and fun with Marmoleum Cinch LOC SEAL. This naturally healthy, waterproof flooring is made primarily from renewable resources, including linseed oil, wood flour, and pine rosins. These natural ingredients provide Marmoleum Cinch LOC SEAL with inherent anti-static properties that repel dust and dirt, making it easy to clean, reducing exposure to allergens, and contributing to better indoor air quality. The flooring “clicks” together for an easy, glue-free installation. These features make Marmoleum Cinch LOC SEAL an ideal floor covering for people with asthma and allergies. Marmoleum Cinch LOC SEAL also features antimicrobial properties that halt the breeding of harmful micro-organisms, including MRSA and C-difficile.

Not only does Marmoleum Cinch LOC SEAL help create a healthy environment, it also creates a beautiful indoor environment. Available in a wide palette of colors that range from classic neutrals to vibrant brights and wood-looks that easily mix and match, allowing your imagination to soar with design possibilities. Marmoleum Cinch LOC SEAL provides beauty, durability, warmth and comfort underfoot, and is ideal for kitchens, living rooms, hallways, bathrooms, bedrooms, and offices.

Marmoleum Cinch LOC SEAL is produced of natural linoleum on waterproof HDF with a cork layer backing for an ecologically sound and acoustically sound solution. The panels and squares easily “click” into place using the Valinge 5G locking system for a secure, glue-free installation. The panels are approx. 12” wide x 36” long and can be used alone or in combination with the 12” x 12” squares. Also, since no glue is required, the floor can be walked on immediately after installation.



333251 lemon zest, 335803 weathered sand



933030 blue, 933038 caribbean

A NATURAL CHOICE

Natural Marmoleum



Marmoleum Cinch LOC SEAL has a top layer of natural Marmoleum. The main ingredient in Marmoleum is **linseed oil**, produced by pressing the seeds of the flax plant. The flax plant, also a source for linen, is an easy-to-cultivate plant that is in abundant supply.

Pine rosins are mixed with the linseed oil to produce a flexible binder. The pine trees from which the rosins are extracted exist in abundance throughout the world.

Wood flour is obtained through controlled forestry, including the planting of special forests. No tropical hardwoods are ever used.

When it comes to our beautiful colors, only **ecologically friendly pigments** are used.

The backing for Marmoleum is made from spun yarn of strong **jute** fiber, grown primarily in India and Bangladesh. Jute is plentiful and highly renewable.



Why choose Marmoleum Cinch LOC SEAL?

1. easy to install

Marmoleum Cinch LOC SEAL panels and squares are easy to install. With a simple tongue & groove mechanism, the panels simply “click” into place. And no glue is required, so the floor can be walked on immediately after installation.

2. easy to clean

Thanks to Marmoleum’s natural ingredients, Marmoleum Cinch LOC SEAL is anti-static, so dust won’t cling to it. Keeping your floor clean and dust free is easily achieved by dust mopping and damp mopping.

3. healthy & hygienic

Because it is so easy to clean, Marmoleum Cinch LOC SEAL makes life easier for people with asthma, allergies, and other respiratory disorders.

Marmoleum’s ability to inhibit the growth of bacteria* stems from the natural raw materials that go into its production, namely linseed oil. An inherent property of the product, the anti-bacterial qualities of Marmoleum won’t diminish over time, giving peace of mind and constant protection from the moment it is installed.

* based on Laboratory testing

4. warm & comfortable

Because Marmoleum Cinch LOC SEAL is a natural product, like wood, it makes your home comfortable and warm. It reaches room temperature quickly and is suitable to install over hydronic radiant heat systems. Marmoleum Cinch LOC SEAL features a cork backing for quiet and comfort underfoot.

5. beautiful

Available in a wide variety of colors of panels and squares, Marmoleum Cinch LOC SEAL allows you to create an environment unique to your home and lifestyle.

5. waterproof

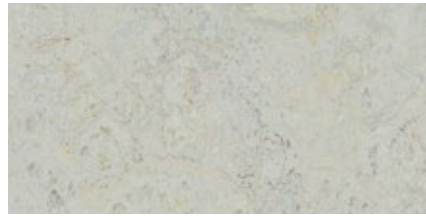
Marmoleum Cinch LOC SEAL features a waterproof core to handle life’s daily messes.



LIVE IN COLOR



933038 333038 caribbean



933428 333428 seashell



935257 * sandy chalk



933251 333251 lemon zest



933127 333127 bleeckerstreet



933268 333268 honeysuckle



933427 333427 agate



933146 333146 serene grey



935253 * bleached gold



933260 333260 leaf



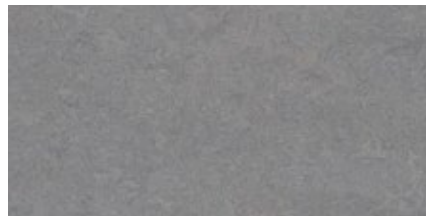
933403 333403 asian tiger



933136 333136 concrete



933405 333405 granada



933866 333866 eternity



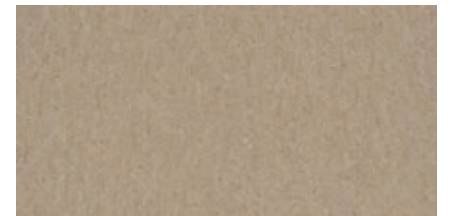
935232 * rocky ice



933267 333267 aqua



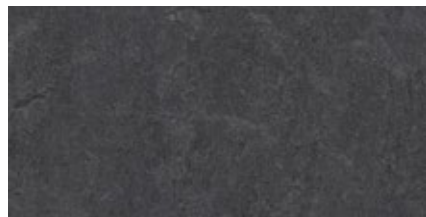
933432 333432 fruit punch



935803 335803 weathered sand



933421 333421 oyster mountain



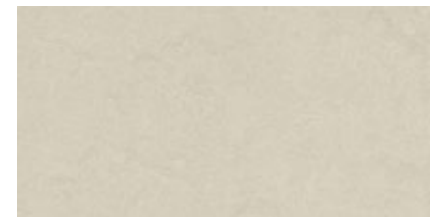
933872 333872 volcanic ash



933573 * trace of nature



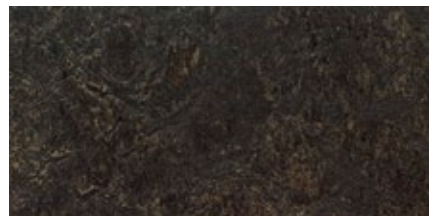
933828 333828 blue heaven



933257 333257 edelweiss



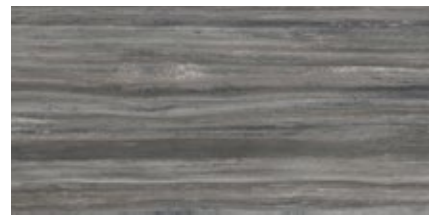
933426 333426 cork tree



933236 333236 dark bistre



932939 332939 black



935251 * black glacier



933030 333030 blue

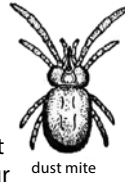


Visit the website for additional color options

* Striato colors only available in 12" x 36" approx panels

The carpet in your home can harbor millions of allergens, including mold, mildew, dust mites, animal dander, and pollen.

These eye-opening facts are the concerns of every family or home owner looking to maintain a healthy living environment. Below, you will learn more about these allergens, how they can affect you, and how Marmoleum can dramatically reduce their presence in your home.



dust mites

Dust mites are tiny bugs nearly invisible to the naked eye that can infest your home by the millions. They crawl through your carpets laying eggs and feed off the dried saliva and skin cells from pets and humans (dander). The waste particles left behind by dust mites are a major cause of asthma, wheezing and other respiratory allergies¹. Every step you take on your carpet or every time you vacuum, small clouds of waste particles are propelled into the air where they can easily be inhaled. At least twenty minutes or more may pass until the particles settle back to the floor.

Your carpets can be treated for dust mites, but you can bet that won't keep them away. If you have dust mite allergies, the American College of Allergy, Asthma & Immunology (ACAAI) states that you may need to remove the carpets in your home² – especially in the bedroom.

dander

Your pet, plus carpeting on your floors, can equal a big problem. Pet dander can reach breathtaking levels (literally!) as it becomes trapped in soft materials such as carpet fibers and can remain there for up to six months³. Additionally, cats and dogs who are permitted outdoors can bring a multitude of fleas, pollen and mold spores into your home on their fur⁴ – making your carpets a reservoir for unwanted allergens.

sources cited

- 1 Dust Mites in the Home - familydoctor.org
- 2 <https://acaai.org/allergies/allergic-conditions/dust-allergies/>
- 3 Animal Dander Allergy. Allergy Self-Help Guide. Mission: Allergy (missionallergy.com)
- 4 <https://aafa.org/allergies/types-of-allergies/pet-dog-cat-allergies/#:~:text=When%20you%20have%20a%20pet,mites%2C%20mold%2C%20and%20pollen.>
- 5 Carpets | American Lung Association
- 6 Creating a Toxin-Free Home - Care.com Resources
- 7 <https://healthybuilding.net/blog/158-building-as-if-breathing-mattered-pvcs-contribution-to-asthma>

caustic chemicals

Many factors affect the indoor air quality of your home: lead and pesticides can contaminate your carpets when they are innocently transported indoors by your shoes or on your pets; building materials emit harmful chemicals known as volatile organic compounds (VOCs) into the air; chemical fumes from the synthetic fibers, backing, padding, cleaners, and adhesives and glues used to install carpeting⁵; even the flame-retardants and stain-resistant materials are at fault. Indeed, one has saved many lives while the other has prevented many inconvenient messes, but both have been linked to a range of developmental and other adverse effects⁶. The Healthy Building Network adds that some vinyl flooring can leach dangerous substances – including phthalate plasticizers, lead, cadmium, dioxins and PVC (polyvinyl chloride, i.e. vinyl). PVC is listed as the worst plastic from an environmental and health perspective⁷.

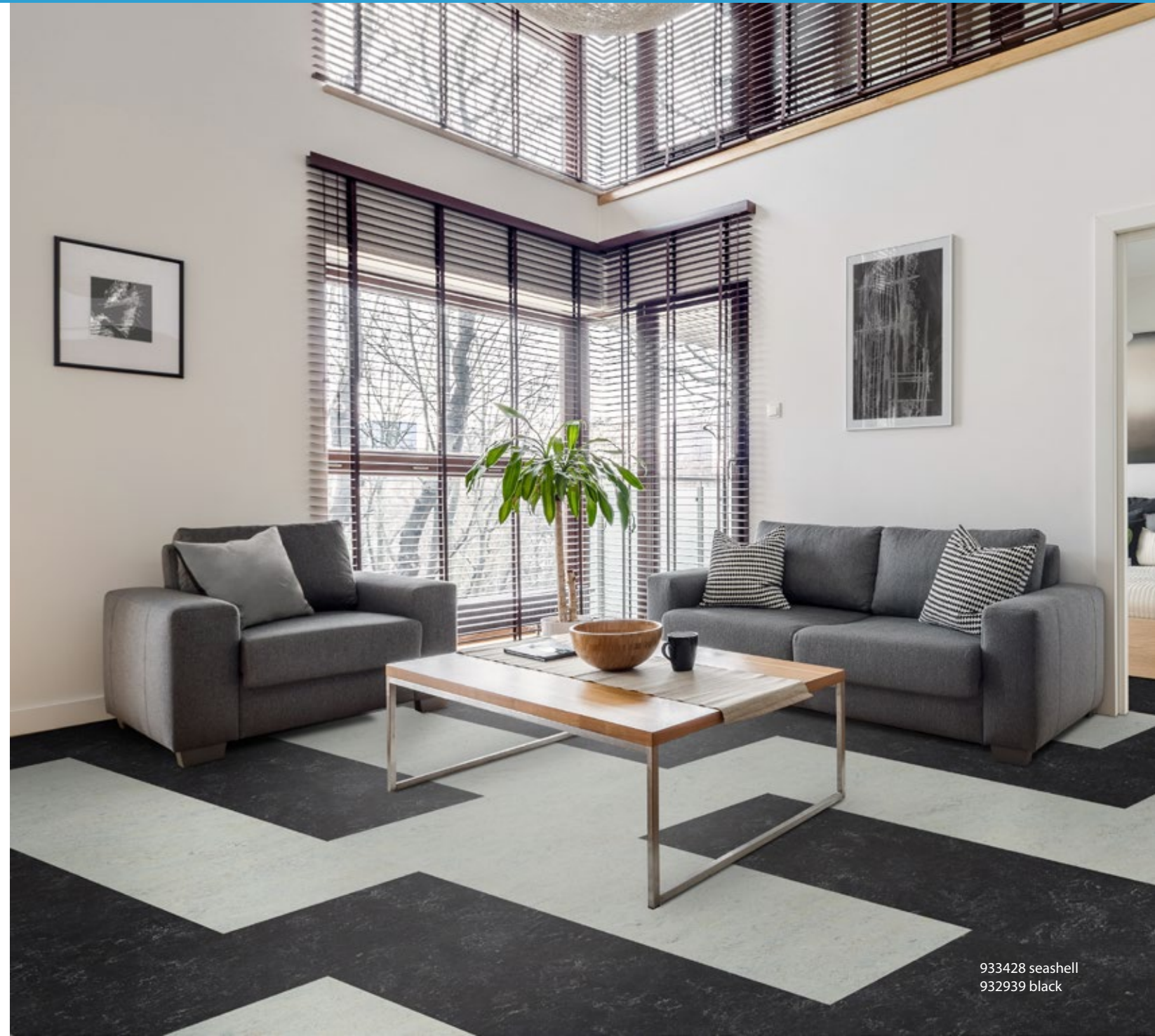
here is how Marmoleum can help

Marmoleum Cinch LOC SEAL is made of natural ingredients and has both anti-bacterial and anti-allergen properties. Studies have shown that harmful microorganisms cannot live or breed on Marmoleum flooring, which makes it the only flooring choice for those concerned about their health and environment.

From Marmoleum Cinch LOC SEAL's natural ingredients to its glue-free installation, you won't find ANY harmful substances in Marmoleum, including lead, formaldehyde or chlorine. The result is a biodegradable floor that has reduced allergen levels, is bacteria-resistant, and easy to clean.

for more information

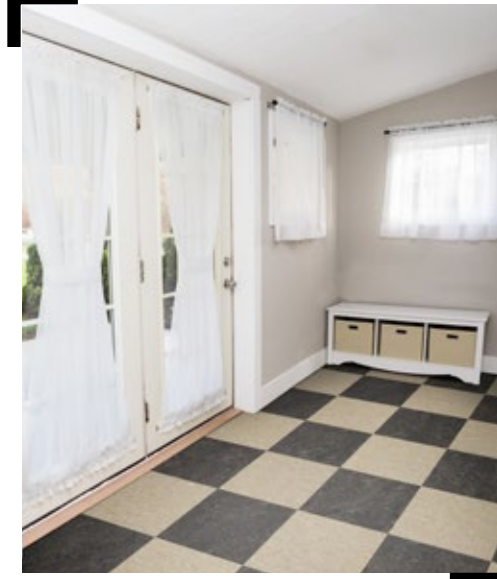
- EPA Indoor Air Quality resources: www.epa.gov/iaq/
- Green America, The Allergen-Free Bedroom: <http://www.greenamerica.org/livinggreen/bedrooms.cfm>
- Asthma and Allergy Foundation of America: Healthy indoor air quality: <https://community.aafa.org/blog/why-healthy-indoor-air-quality-is-important>
- American Lung Association, Healthy Air at Home: <http://www.lung.org/healthy-air/home/>
- National Asthma Campaign (U.K.): www.asthma.org.uk
- HouseDustMite.org: www.housedustmite.com



IMAGINE THE POSSIBILITIES



933403 asian tiger



335803 weathered sand
333236 dark bistre



933432 fruit punch



933267 aqua
933268 honeysuckle

IMAGINE THE POSSIBILITIES



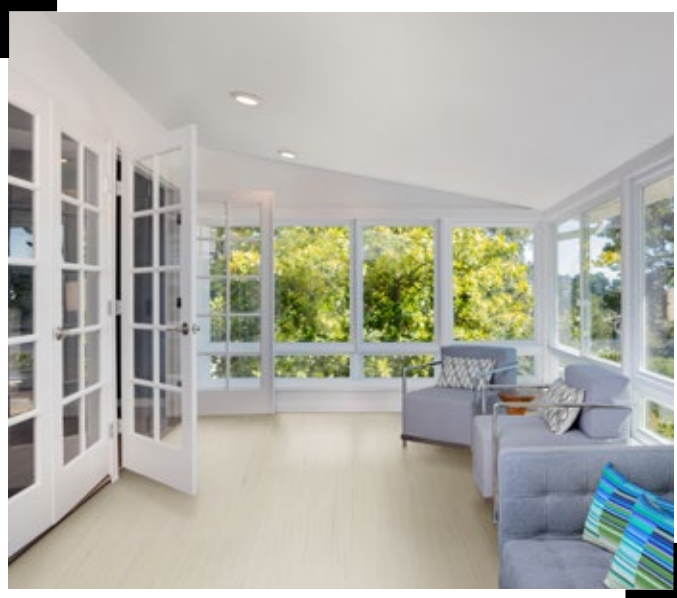
933427 agate



933828 blue heaven



935251 black glacier



935257 sandy chalk



933405 granada



933421 oyster mountain

INSTALLATION

Marmoleum Cinch LOC Seal has a top layer of Marmoleum, which is made from predominantly harvestable natural raw materials and is processed according to an environmentally friendly procedure. Its main ingredient is natural linseed oil, which is mixed with wood flour, rosin and limestone. Marmoleum receives its color from ecologically responsible pigments. Pressed onto a jute fabric under high pressure, an extremely durable and environmentally friendly flooring is produced. As Marmoleum is made from natural raw materials, slight color and structural differences are possible between the production batches, samples and the goods to be delivered.

Dimensions

Click Panel	11.81" x 35.43" (300 mm x 900 mm)
Click Square	11.81" x 11.81" (300 mm x 300 mm)

Structure

Total Thickness	9.8mm
Surface	2.5mm Marmoleum
Base Material	6.8mm HDF
Backing	1.0mm cork
Carton Contents	7 panels for 20.3 ft ² (1.89 m ²) 7 squares for 6.7 ft ² (0.63 m ²)

What is Ambering?

Ambering is the slight yellow hue to Marmoleum when it is first removed from the packaging. This is a natural phenomenon that happens with Marmoleum and is completely normal. Linseed oil, a natural oil extracted from flax seeds and one of the main ingredients in Marmoleum is what causes this yellow hue. This very important ingredient in Marmoleum provides several unique characteristics:

- Linseed oil, along with wood flour, makes the floor naturally antistatic, repelling dust, making Marmoleum easy to clean.
- When exposed to air and light, the linseed oil oxidizes from within the Marmoleum and continues for the life of the product. This makes the material harden over time and become more durable.



General Installation Guidelines

- The Marmoleum Cinch LOC Seal cartons should be stored flat, and unopened, for approximately 2 – 3 days in the center of the room in which they are to be installed. In the winter months, store the cartons for approximately 6 days.
- Tools and Materials Required:
 - Tape Measure
 - Fitting Wedges
 - 3/8" Spacers
 - Pencil
 - Hammer
 - Straight Back Hand Saw
 - Keyhole Saw or Jigsaw
 - Angle or Adjustable Bevel

- Foam Underlayment (for concrete subfloors or subfloors with underfloor heating)
- All Marmoleum Cinch LOC Seal panels and squares should be inspected for manufacturing defects and damage prior to installation. The ambient room temperature should be at least 68° F (20° C) and the ambient relative humidity between 50% – 60%. To maintain the long-term value of Marmoleum Cinch LOC Seal, we recommend the use of a humidifier to avoid extreme drying out during the heating season. Marmoleum Cinch LOC Seal can be installed on any clean, dry, structurally sound subfloor. The subfloor must be flat to within 3/32" in 6' (2.0mm in 2 meters).
- For concrete subfloors, internal relative humidity should not exceed 75% (tested in accordance with the latest version of ASTM F 2170) and moisture vapor emissions must not exceed 3 pounds per 1,000 square feet in 24 hours (tested in accordance with the latest version of ASTM F 1869).
- All concrete subfloors and subfloors with underfloor heating require a vapor barrier. The edges of the vapor barrier should extend up the walls a minimum of 2". Follow the underlayment manufacturer's recommendations for seaming requirements.
- When using underfloor heating, Forbo only recommends installing Marmoleum Cinch LOC Seal over systems that are heated by water (hydronic).

IMPORTANT!! An expansion gap of 3/8" (9.8mm) is required around the entire room between the flooring and the wall, including at all columns, heating pipes, steel door frames, etc. Here are some other things to keep in mind before starting the installation:

- There are a variety of moldings (such as "T" moldings, reducers, quarter-round and overlap end profiles) that can be purchased at local home improvement stores, hardware stores or online.
- All expansion joints should be a minimum of 3/8" (9.8mm) wide.
- Expansion joints are required for any areas longer or wider than 26' (7.9 meters) and can be covered with a "T" shaped molding.
- As a general rule, expansion joints should be used in doorways connecting hallways, adjacent rooms, or closets.
- It is important to minimize any opportunity for damage by cleaning up spills immediately. Spills should not remain on the surface of Marmoleum Cinch LOC Seal longer than 30 minutes.
- If a floor drain or sump pump is present, it is there for a reason. **DO NOT INSTALL** Marmoleum Cinch LOC Seal on that level.
- All expansion spaces located in wet areas, such as areas where sinks dishwashers, refrigerators, toilets, showers, bathtubs are located should be sealed with 100% mildew-resistant silicone. To seal the area, apply a thin bead of silicone where the bottom of the Marmoleum Cinch LOC Seal and subfloor meet. **DO NOT** fill the entire expansion space with silicone.

For additional information, contact Forbo's Product Support and Education Services.

Installation

Marmoleum Cinch LOC Seal is installed without any need for glue by placing the tongue into the groove as well as the groove into the tongue. However, it is easier to work so that you are placing the tongue into the groove. In Figure 1, the **TONGUE** (marked as A) is semi-hidden on the left and top of the material and the **GROOVE** (marked as B) is the prominent visible locking piece on the right and bottom of the material.

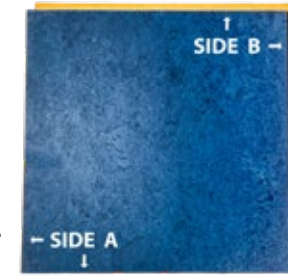


Figure 1

1. Start by measuring the room and determining the starting point in the room. It is recommended to install the material perpendicular to the main window. This will help minimize the appearance of seams throughout the room.
2. Lay out several pieces with the groove side facing right. **NOTE:** When installing Marmoleum Cinch LOC Seal panels, the joints of these pieces must be staggered a minimum of 12". It may be necessary to cut the first piece of the row to create this stagger. This same stagger can be created by mixing both panels and squares throughout the installation. Marmoleum Cinch LOC Seal squares can be installed with all 4 corners touching, or in a checkerboard pattern.
3. To ensure that all pieces are clicked together at exact 90° angles, install a temporary piece along the front wall (parallel with the material). Click the tongue of the first piece into the groove of the temporary piece, allowing the temporary piece to sit halfway on the first piece. See Figure 2. The temporary piece in the figure is the top piece. **IMPORTANT!!** The pieces must be perfectly aligned with one another. Any variation in alignment from piece to piece can create gaps between one row and the next.

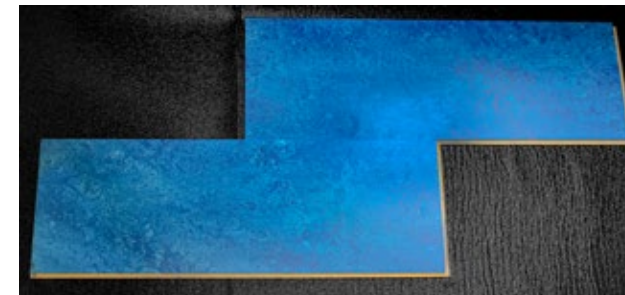


Figure 2

4. Place the tongue of the second piece into the groove of the temporary board at a 45° angle. See Figure 3.
5. Slide it gently to the left. Lower it into the groove of the first piece and press it into place. You should hear a "clicking" sound when it locks into place.
6. Move the temporary board so it now sits halfway on the second piece. See Figure 4.
7. Continue these steps until the end of the row.
8. Before laying the final piece, remove the temporary board and place spacers that are 3/8" wide along the length of the front wall as well as the left side wall.

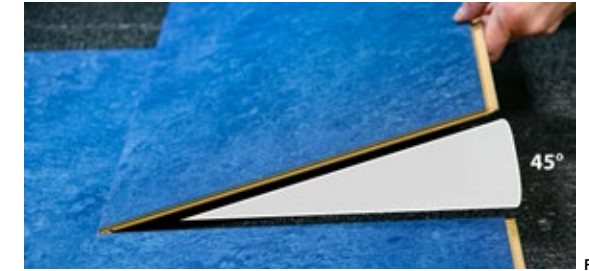


Figure 3

9. Slide the entire first row so it is touching the spacers. Measure the distance from the edge of the last piece to the wall. Subtract 3/8" and cut the final piece to fit. Be sure to cut the piece so that the cut edge will be touching the wall when it's installed. **NOTE:** If using a hand saw, the Marmoleum side must be facing upwards. If using a power saw, the direction of the blade must cut into the Marmoleum side of the board (Marmoleum side facing downwards).
10. Move the row away from the wall and with the use of a temporary board, install the final piece to the row.
11. Carefully slide the row back to the wall and place a 3/8" spacer against the right side wall.
12. Start installing the second row to the first row as outlined above in Steps 5 – 7. The first row is used in place of the temporary piece.
13. The remainder of the room is installed following these steps. If there are any other fixed objects in the room, such as cabinets, pipes, etc., it is important to leave a minimum of 3/8" spacer where the flooring meets these objects.
14. For the final row, be sure to leave a minimum of 3/8" spacer at all walls. The bottom groove that will be against the wall can be sawed off if necessary.



Figure 4

15. For areas where there are door moldings or other obstructions that the material must slide under, remove the groove from the previous row. Then, instead of clicking the final row into place, it will slide into place. These areas must be secured using wood glue where the tongue and groove would meet. **NOTE:** It may be necessary to cut wooden door frames to allow the flooring to be slid into place. To do this, place a loose panel against the door frame with the Marmoleum side facing downward, and saw the frame off along the panel.
16. After the final row is in place, molding, such as a quarter round, is installed to cover the expansion perimeter around the room.
17. If for any reason you need to disassemble the floor, gently remove the final row and take the pieces apart starting from the last board on the right.
18. The floor can be walked on immediately after installation.

CARING FOR YOUR FLOOR

Marmoleum Cinch LOC SEAL has a strong, durable protective top layer – Topshield pro. This innovation from Forbo ensures a highly effective shield against dirt and scuff marks. Marmoleum with Topshield pro is ready for use immediately following installation and does not require the application of additional protective coats of finish. With Topshield pro, your Marmoleum floor will maintain its beautiful appearance with simple cleaning. Dry dusting is a fast and easy way to keep your floor free from loose dirt. Remove spots with a mop or cloth dampened with diluted Forbo Neutral pH Cleaner. Avoid excessive use of water on the floor, and make sure chair and furniture legs are covered with felt protectors. An entrance mat will protect the floor from dirt.

Initial Care Following Installation

1. Remove all surface soil, debris, sand and grit by sweeping, vacuuming or dust mopping.
2. Mix 1/2 – 1 ounce of Forbo Neutral pH Cleaner per 1 gallon of unheated tap water.
3. Apply the solution to the floor. Do NOT flood the floor. The solution can be applied with a mop and bucket.
4. Pick up soil and excess solution with a clean mop. Rinse mops frequently and change the solution as needed.
5. Rinse the entire floor surface with a clean mop using clean, cool water. Pick up rinse water with a clean, dry mop or towel.
6. Allow the floor to dry thoroughly before allowing traffic.

Routine Floor Care Procedures

1. Remove all surface soil, debris, sand and grit by sweeping, vacuuming or dust mopping.
2. Mix 1/2 – 1 ounce of Forbo Neutral pH Cleaner per 1 gallon of unheated tap water.
3. Apply the solution to the floor. Do NOT flood the floor. The solution can be applied with a mop and bucket.
4. For ingrained dirt, a non-abrasive scrubbing sponge may be required.
5. Pick up soil and excess solution with a clean mop. Rinse mops frequently and change the solution as needed.
6. Rinse the entire floor surface with a clean mop using clean, cool water. Pick up rinse water with a clean, dry mop or towel.
7. Allow the floor to dry thoroughly before allowing traffic.

Spots & Spills

The vast majority of spills can be cleaned off your Marmoleum satisfactorily. If there are spills or pet “accidents”:

1. Act quickly.
2. Scrape or blot as much as possible.
3. Mop the floor with a solution of Forbo Neutral pH Cleaner.
4. Damp mop with clean water.
5. If necessary, repeat steps 3 and 4. If the stain persists, as it may with glue, varnish, paint, ink, tar, cosmetics, shoe polish, some wines, coffee and some other substances, you may need to allow the solution to sit or “dwell” on the floor for several minutes. Rub the stained area with a green nylon kitchen pad then rinse the area with clean water. Repeat if necessary.

If the stain persists, contact Forbo Product Support & Education Services before trying any other procedures.

For further information on restoration, please contact Forbo’s Product Support & Education Services at +1-800-842-7839.



935251 black glacier



933267 aqua
933251 lemon zest
933872 volcanic ash



933426 cork tree

North American Headquarters:
 8 Maplewood Drive
 Humboldt Industrial Park
 Hazle Township,
 PA 18202
 ph: 1-800-842-7839
 fax: 570-450-0258

Canadian Office:
 3983 Nashua Drive
 Unit 1
 Mississauga
 ON L4V 1P3
 ph: 1-800-268-8108
 fax: 416-745-4211



933260 leaf
 933828 blue heaven



333260 leaf
 333428 seashell

marmoleum® cinch loc seal



visit us online: www.forboflooringNA.com | email: info.na@forbo.com
 Item #247547 V1

creating better environments

Forbo
 FLOORING SYSTEMS