



Analytical Report from Breath Gas Values

Type of Test Performed: Small Intestinal Bacterial Overgrowth (SIBO)
GLUCOSE

Sample Report CMI26

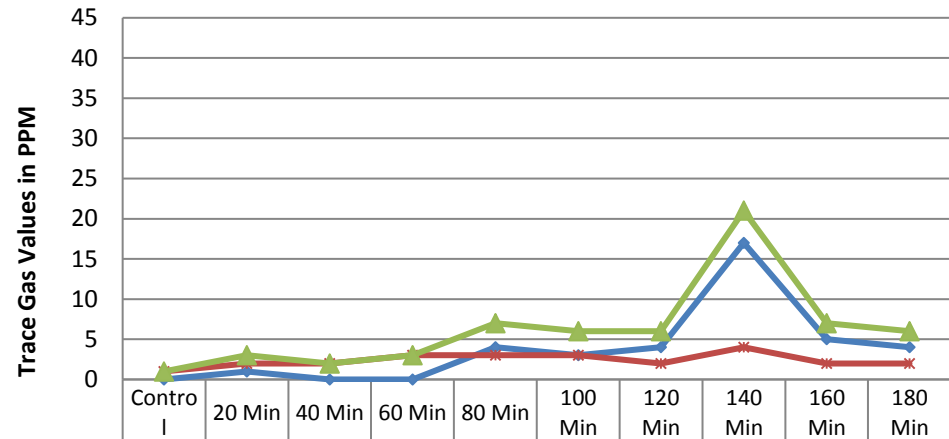
Date Samples Collected: 2/17/2019

Date of Analysis: 2/22/2019

Sample Analysis Chart

Sample #	Sample	ppm H ₂	ppm CH ₄	Combined	CO ₂ %
1	Control	0	1	1	4.40
2	20 Min	1	2	3	4.90
3	40 Min	0	2	2	5.10
4	60 Min	0	3	3	4.40
5	80 Min	4	3	7	4.40
6	100 Min	3	3	6	4.30
7	120 Min	4	2	6	4.60
8	140 Min	17	4	21	4.90
9	160 Min	5	2	7	4.80
10	180 Min	4	2	6	4.50

Graphical Representation



	Control	20 Min	40 Min	60 Min	80 Min	100 Min	120 Min	140 Min	160 Min	180 Min
Hydrogen	0	1	0	0	4	3	4	17	5	4
Methane	1	2	2	3	3	3	2	4	2	2
Combined	1	3	2	3	7	6	6	21	7	6

For a proper diagnosis, your physician must review this information supplemented with clinical information that is unavailable to BreathTrackers, Inc.

The physician must be aware of clinical factors that may affect the interpretation of this test prior to concluding a final diagnosis based on these results.

Hydrogen (H₂) and Methane (CH₄) values corrections are based on CO₂ content in the samples. CO₂ is not used for diagnosis, only for quality assurance of samples.

*Correction is based on contamination with room air or bronchial deadspace air, typically good samples are around 5.5% CO₂. Poor samples are typically below 1.5%.

If a sample is considered "poor" the charted result cannot be determined accurately due to contamination of the sample. This does not mean your test is inconclusive in all cases.

BreathTrackers Inc. analyzed the breath samples provided by customer.

No diagnosis is being made by BreathTrackers and therefore, shall not be held liable for any further interpretation, final assay decision, or medical treatment provided by physicians to their patients based on these results.