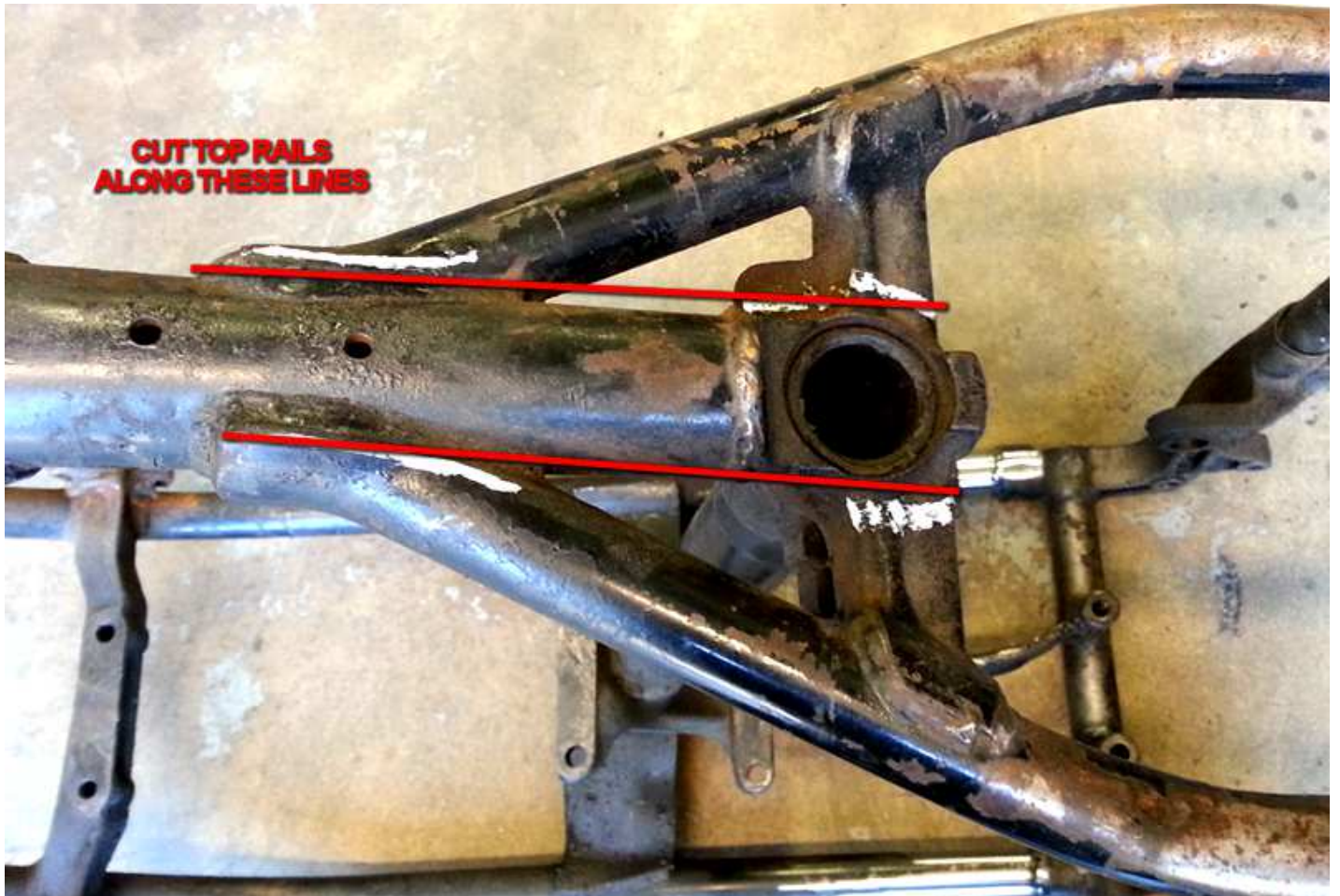




**YOUR MIK50 SHOULD ARRIVE
LOOKING SOMETHING LIKE THIS...**

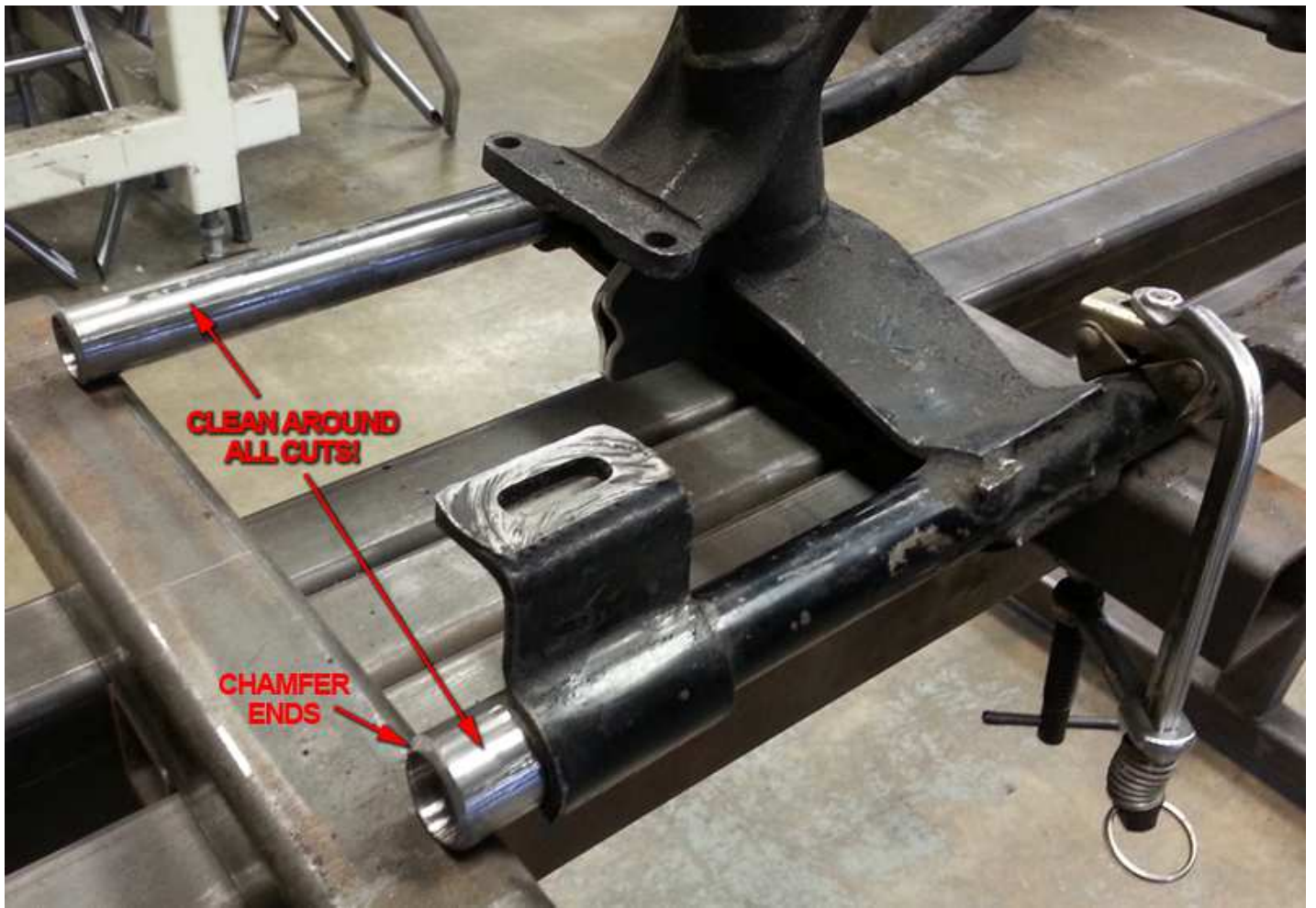




YOUR FRAME SHOULD NOW LOOK SOMETHING LIKE THIS.



**CLEAN EXCESSIVE
METAL LEFT OVER
FROM REMOVING
THE REAR SECTION**





**INSTALL WITH TOP RAIL
JUST PAST END OF
THE BACKBONE**



**FIND THE MIDPOINT BETWEEN AXLE PLATES
AND MAKE SURE IT IS IN LINE WITH THE
BACKBONE OF THE FRAME.
THEN... TACK IN PLACE AND CHECK AGAIN!**



**YOUR MS-50 HARDTAIL
IS NOW INSTALLED!**