

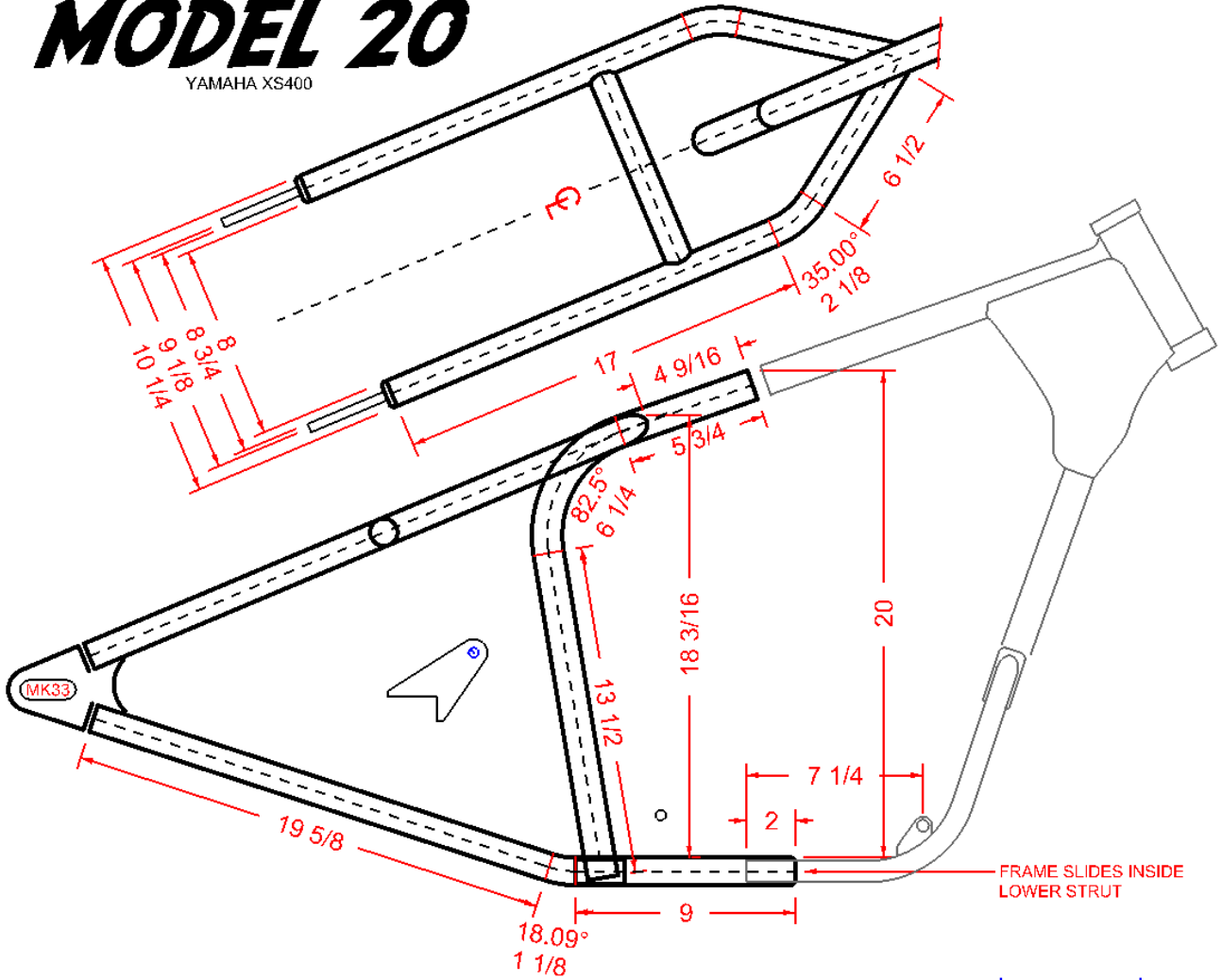
Subject: MK20 INSTRUCTIONS
From: David Roy <david@voodoovintage.com>
Date: 11/5/2014 7:54 PM
To: jgolliff@gmail.com

Hi James,

Here's some construction photos that may help you assemble your hardtail. This is actually the Mk25, but the same basic principal...

MODEL 20

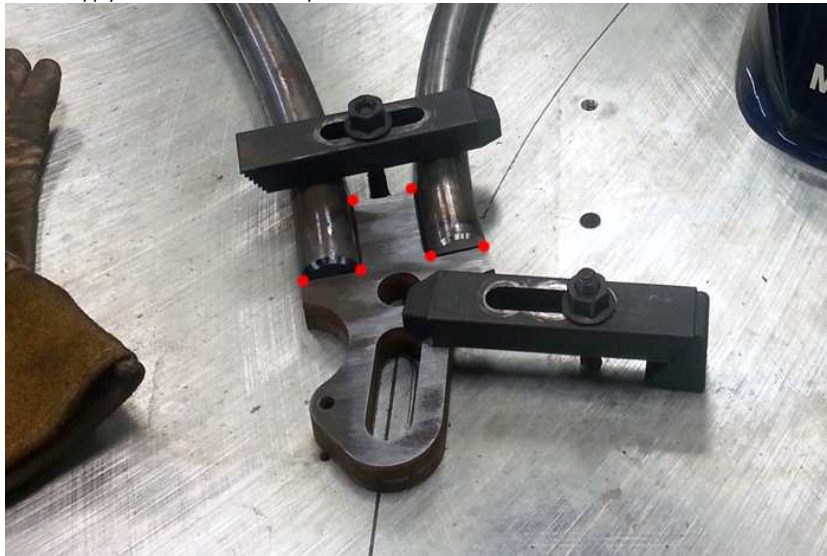
YAMAHA XS400



One side at a time, lay each section on a flat work surface.
You can use a square to make sure your upper strut is 90 degrees to your work plane.



Use a 3/8" spacer under your axle plate to center it on your frame tubes.
Then... Apply small tacks as shown by the red dots here...



When both sides have been tacked, prop them up mirroring each other with the seat stay, chain stay, and rectangular cross tube in place.
Again... Use a construction square to make sure both sides are perfectly vertical to your work plane...



Once this is done, you can begin installation by cutting your XS400 frame as shown here:





Secure a string from the top/center of your backbone to the midpoint between your axle plates.
Rotate the backbone left/right until it aligns with the string as shown here.
This is not the XS400 hardtail, but you will align the backbone using this same technique...



To install, slide the lower rails of your XS400 frame 2 inches INSIDE the hardtail like this...



And splice the new backbone to the old using the provided slug.



And please let me know if you have any questions whatsoever during assembly and I'll get back to you ASAP my friend! :)



David Roy
Voodoo Vintage Fabrication
7304 McNeil Drive #601
Austin, TX 78729

512.825.0523