

skylink-pro for Aviation

Live Internet Access to Your Weather Station Data



LONDON SOUTHEAST AIRPORT skyview skylink-pro

Current Forecast History Rainfall Charts Satellite Specials User About Us

Current Weather for EMPAGL Local Time: Sat 12:40 (UTC)

Runway Vis* 000 <small>(Results are LH)</small>	QFE mb 990	Wind Dir.* 196	Wind Speed 196
Temp Out °C 2.1	QNH mb 1007	Wind Average mph 0	Speed Runway 01 LMB
Dew Pt °C 0.4	Regional QNH (Yarmouth) mb 1007	Actual wind speed mph 0	Select Regional QNH Offset (m)
Humidity % 89	Humidity Graph	Crosswind mph 0	Clearance and Obstacle Clearance
Rainfall mm 0	Calculated cloud base ft 700	Headwind mph 0	Select Circuit Director

Runway: 07 AS Served: 18:10 Local time

Air Traffic Control

brought to you by

skyview
the weather company

Skylink-pro for Aviation

Skyview has developed Skylink-pro, a unique web service, to provide a platform for viewing data from sensors installed at site, alongside other meteorological data required by the aviation sector, such as TAF and Metar reports.

Designed and maintained by our in-house experts Skylink-pro provides access by multiple users to information from site sensors, forecasts, reports and charts from any internet enabled PC.

Skylink-pro is a hub for meteorological information. Data from your sensors on site is displayed clearly on your ATC screen, with wind speed and direction data manipulated to display crosswind & headwind effects on your runways. The same site also gives nationwide information, including aviation specific charts and reports.

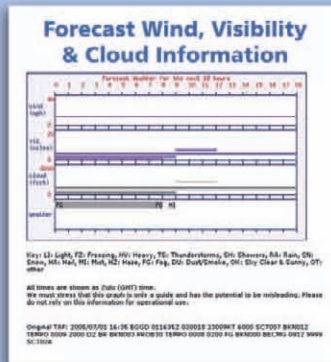
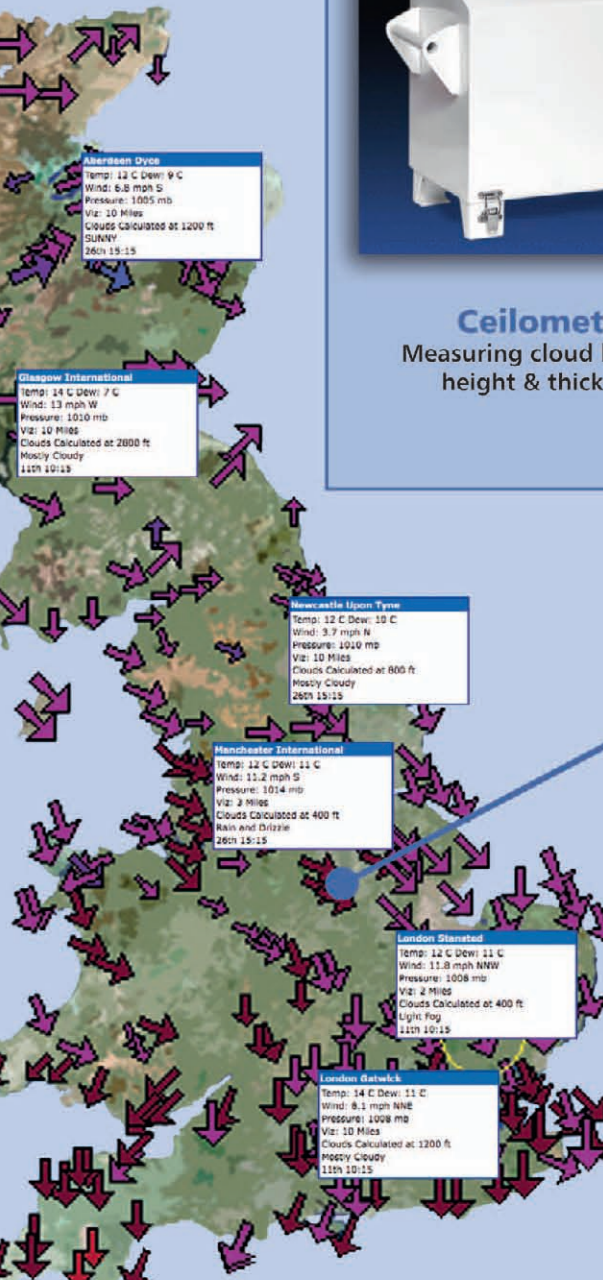


Wind Speed & Direction Sensors
UKAS calibrated

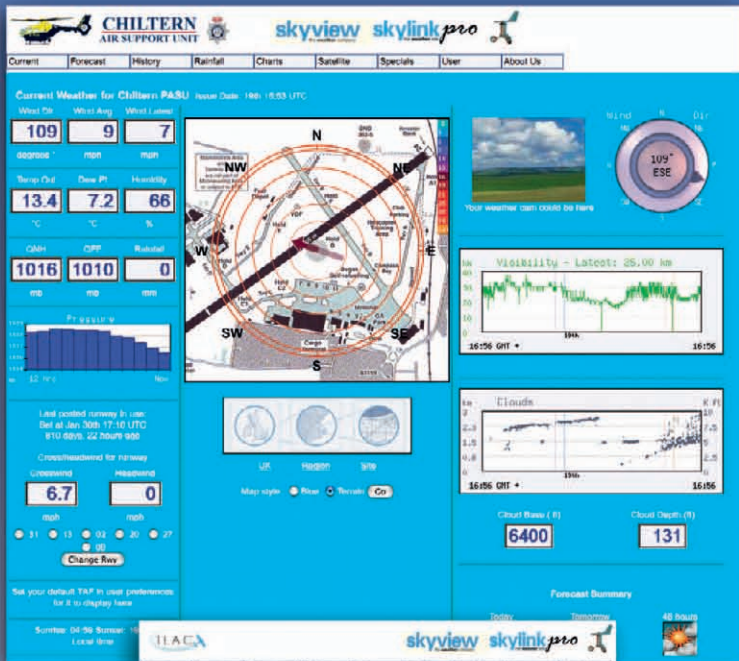


Visibility Sensors
Installed & calibrated on site

Ceilometers
Measuring cloud base height & thickness



The interactive map of the UK shows nationwide information such as temperature, wind speed and pressure at a glance, as well as calculated cloud height, visibility and current condition descriptions. Combined with data from your sensors all the information you need to ensure safe flight operations is at your fingertips with Skylink-pro.



ALL YOUR WEATHER DATA IN ONE PLACE

We will dedicate a website exclusively for your company's use and set it up with all your weather data. This can be accessed from any PC with Internet access.

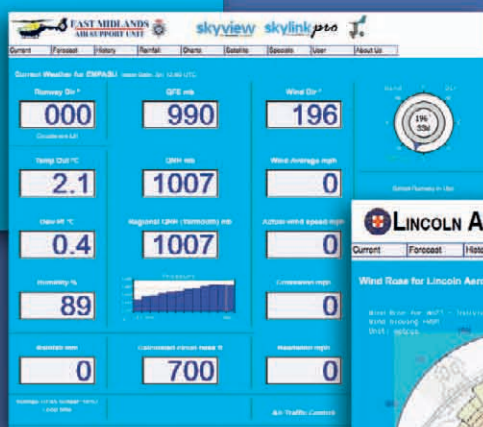
Information from all of your weather monitoring equipment is uploaded at regular intervals to your password protected website. Then simply log on and view your data, alongside nationwide information.

Special Features: Of particular importance to the Aviation Industry are TAF and Metar reports, both of which are also visible via your Skylink-pro web page.



TERMINAL AERODROME FORECASTS & METAR DATA ACCESS

Essential aviation weather data available in one place, covering the UK and Europe



AIR TRAFFIC CONTROL SCREEN

Designed to give clear readings at a glance



WIND MAP »
Showing runway crosswinds & headwind displays

CLOUD HEIGHT & VISIBILITY »
Incorporating SMS & email alarm facilities for remote access

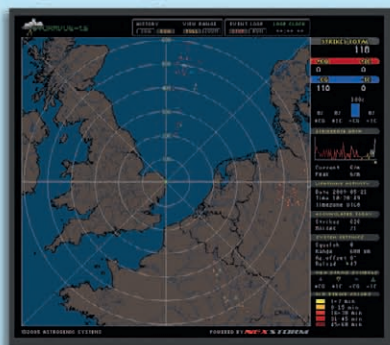


Skylink-pro is a versatile resource that we will develop to meet your individual needs. Skylink-pro is already being widely used in the aviation sector. Skylink-pro has been developed to include many essential features as standard, with the flexibility in it's design to encompass a range of applications, with alterations and amendments made by our own team according to your specifications.

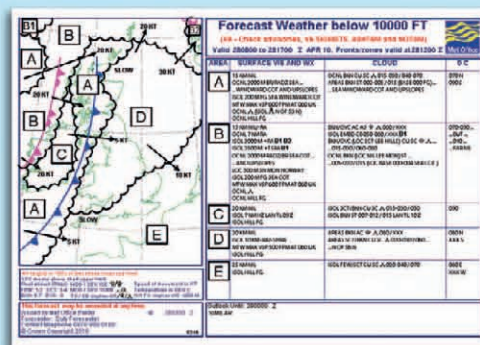
Satellite



Lightning



Charts



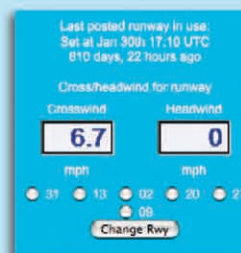
European Data



Historic Data (for review & incident reporting)



Runway Selector Headwind & Crosswind calculator



Skylink-pro in Action:

East Midlands Air Support Unit

"We have a live feed to a weather web page which we can access through the force control rooms. This can be invaluable in determining at what point we leave a remote location and return to base before the weather closes in completely. This in itself is a great asset to flight safety."

Graham Hancock, Chief Pilot



Airports



Helicopter Operations



Airfields



Applications: