

skylink-pro

Live Internet Access to Your Weather Station Data



brought to you by

skyview
the weather company

skylink-pro

What It Is

Skylink-pro allows you to view weather data from your weather station from any pc with internet access, on your own Skylink-pro website – password protected, if required.



How It Works

Skyview Systems are proud to bring you their innovative web-based weather data platform, designed by our experts to meet the needs of our customers.

Our engineers can install your weather station and software, and from there everything is automatic. Weather data from your station is automatically uploaded to your PC by our dataloggers at the interval of your choice. Your data is then sent to our server and displayed on your dedicated Skylink-pro webpage.

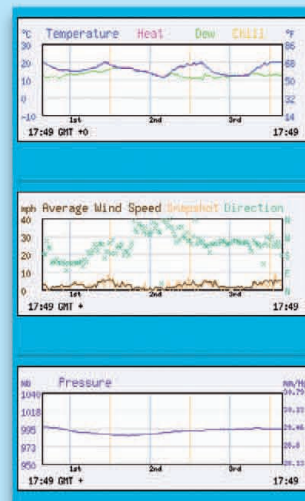
View Your Weather Data in a Multitude of Forms

Live Weather Data:

Wind Dir 321 degrees	Wind Avg 11 mph	Wind Latest 4.9 mph
Temp Out 16.3 °C	Dew Pt 4.7 °C	Humidity 46 %
Sea Level 1015 mb	Pressure 1015 mb	Rainfall 0 mm

- Sunrise/Sunset
- Wind
- Rain
- Temperature
- Humidity
- Pressure
- Optional extras: UV, Solar Data, Leaf Wetness, Soil Moisture
- Dew Point
- Wind Chill

Historic Data, Charts & Maps:



- Substitute data should your system be damaged
- Export data in excel format for easy manipulation
- View historic data in a table or graph

Change units, time or station:

Earliest data: 2009-05-19 08:33:00

Show data up to:
Day: **21**
Month: **5**
Year: **2009**
Hour: **9**

From how long before:
24 hours

Mode:
Individual Wind Runs

Direction:
Wind blowing From

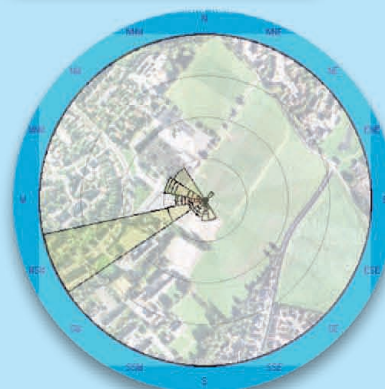
Map overlay:
 Map On

Units:
 m/s ft km/h mph

Change

Forecasts:

- Local
- National
- European
- 1 - 7 days



Date/Time	Temp	Wind	Dir	Humidity	Pressure	min	max	Heat	Chill	Dewpoint	Humid
2009-02-27 08:04:00	0.0	0.0	255	WSW	7.7	7.7	5.5	0.0	0.0	5.5	0.0
2009-02-27 07:49:00	0.0	0.0	251	WSW	7.7	7.7	5.5	0.0	0.0	5.5	0.0
2009-02-27 07:34:00	0.0	0.0	263	WSW	7.7	7.7	5.5	0.0	0.0	5.5	0.0
2009-02-27 07:19:00	0.0	0.0	175	S	7.7	7.7	5.5	0.0	0.0	5.5	0.0
2009-02-27 07:04:00	1.3	0.5	160	S	7.7	7.7	5.5	0.0	0.0	5.5	0.0
2009-02-27 06:49:00	0.5	0.5	252	WSW	7.7	7.7	5.5	0.0	0.0	5.5	0.0
2009-02-27 06:34:00	0.0	0.0	219	SW	7.8	7.8	5.6	0.0	0.0	5.6	0.0
2009-02-27 06:19:00	0.0	0.0	269	W	7.8	7.8	5.6	0.0	0.0	5.6	0.0
2009-02-27 06:04:00	0.0	0.0	279	W	7.7	7.7	5.7	0.0	0.0	5.7	0.0
2009-02-27 05:49:00	0.5	1.3	249	WSW	7.6	7.6	5.5	0.0	0.0	5.5	0.0
2009-02-27 05:34:00	0.9	0.9	240	WSW	7.4	7.4	5.4	0.0	0.0	5.4	0.0
2009-02-27 05:19:00	1.3	0.9	282	WSW	7.4	7.4	5.4	0.0	0.0	5.4	0.0
2009-02-27 05:04:00	1.3	0.5	278	W	7.3	7.3	5.5	0.0	0.0	5.5	0.0
2009-02-27 04:49:00	0.0	0.0	277	W	7.2	7.2	5.3	0.0	0.0	5.3	0.0
2009-02-27 04:34:00	0.5	0.5	246	WSW	7.2	7.2	5.3	0.0	0.0	5.3	0.0
2009-02-27 04:19:00	0.0	0.0	171	S	7.2	7.2	5.1	0.0	0.0	5.1	0.0
2009-02-27 04:04:00	0.0	0.0	250	SW	7.3	7.3	5.4	0.0	0.0	5.4	0.0
2009-02-27 03:49:00	0.0	0.0	276	W	7.3	7.3	5.4	0.0	0.0	5.4	0.0
2009-02-27 03:34:00	0.0	0.0	243	WSW	7.3	7.3	5.5	0.0	0.0	5.5	0.0
2009-02-27 03:19:00	1.3	0.5	164	W	7.2	7.2	5.2	0.0	0.0	5.2	0.0
2009-02-27 03:04:00	0.0	0.0	192	SSW	7.2	7.2	5.1	0.0	0.0	5.1	0.0
2009-02-27 02:49:00	0.5	0.9	267	W	7.2	7.2	5.0	0.0	0.0	5.0	0.0
2009-02-27 02:34:00	0.0	0.9	271	W	7.2	7.2	5.0	0.0	0.0	5.0	0.0
2009-02-27 02:19:00	0.0	0.0	264	W	7.2	7.2	4.8	0.0	0.0	4.8	0.0
2009-02-27 02:04:00	0.0	0.0	225	SW	7.4	7.4	5.1	0.0	0.0	5.1	0.0
2009-02-27 01:49:00	0.0	0.0	217	SW	7.6	7.6	5.2	0.0	0.0	5.2	0.0

www.skylinkpro.info

The screenshot shows the 'skyview' website interface. At the top, there are navigation tabs: Current, Forecast, History, Lightning, Charts, Satellite, Specials, User, and About Us. The main content area is divided into several sections:

- Wind Data:** Wind Dir: 068, Wind Avg: 3.7, Wind Latest: 3.7. Units: degrees, mph, mph.
- Temperature & Humidity:** Temp Out: 13, Dew Pt: 6, Humidity: 62. Units: °C, °C, %.
- Sea Level & Pressure:** Sea Level: 1024, Pressure: 1024, Rainfall: 0.50. Units: mb, mb, mm.
- Pressure Chart:** A bar chart showing pressure changes from -12 hrs to Now.
- Solar Rad & UV:** Solar Rad: 446, UV: 2. Units: W/m2, Index.
- Sunburn Risk:** A color-coded scale from Low (green) to High (red).
- Sunrise/Sunset:** Sunrise: 05:39, Sunset: 18:42, Local time.
- Map:** A map of the UK with numerous purple arrows indicating wind direction and speed across the country.
- Forecast Summary:** Today, Tomorrow, 48 hours.
- Change Station:** A dropdown menu currently set to 'Newcastle Upon Tyne' with a 'Go' button.
- Map Style:** Radio buttons for 'Blue' and 'Terrain', with a 'Go' button.

Personalise your page

Weather webcam



Optional extras

View all your participating sites via a drop down menu

Text & Email Weather Alerts



Skylink pro offers a unique opportunity to access weather information directly from your weather station, from any PC with Internet access.

Skylink-pro has the benefit of being populated with weather data from multiple stations, giving you access to nationwide information.

The screenshot shows the 'Skylink Energy' website interface. It features several data panels and a visual representation of the energy equipment:

- Energy Generation:** A section with three charts: Wind Speed and Direction, Solar Radiation, and Total Output and Weight of Carbon.
- Current Values:** Solar Rad (W/m2): 601, UV Index: 2.
- 24 Hour Totals:** Total kWh: 0.3, Grams of CO2 saved: 130.
- Visuals:** A large image of a white wind turbine and a solar panel array.

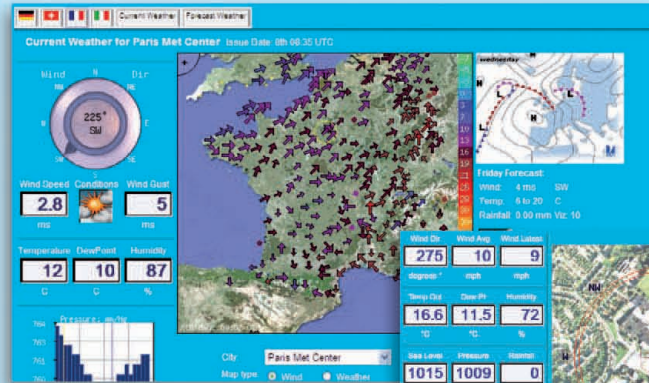
Skylink Energy

Specially designed, this section of our website is ideal for microrenewable energy projects. Introducing basic wind and solar energy technologies, it clearly shows how renewable resources can save energy. We can supply you with renewable energy sources and you can compare your renewable energy output with your carbon dioxide reduction, displayed in graphical format.

Skylink-pro is a versatile resource that we will develop to meet your individual needs. Skylink-pro is already being widely used in various industries across the nation, each with a different focus. Skylink-pro has been developed to include many essential features as standard, with the flexibility in it's design to encompass a range of applications, with alterations and amendments made by our own team according to your specifications.

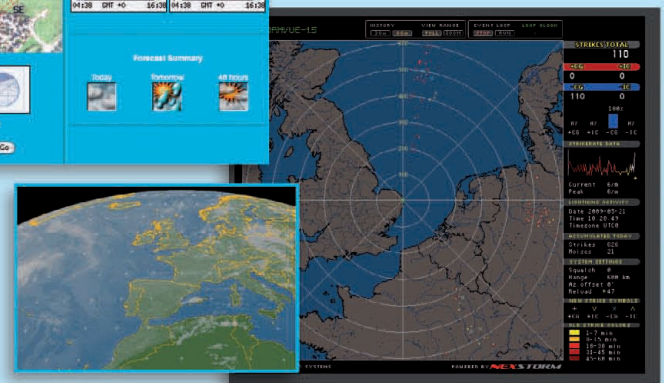
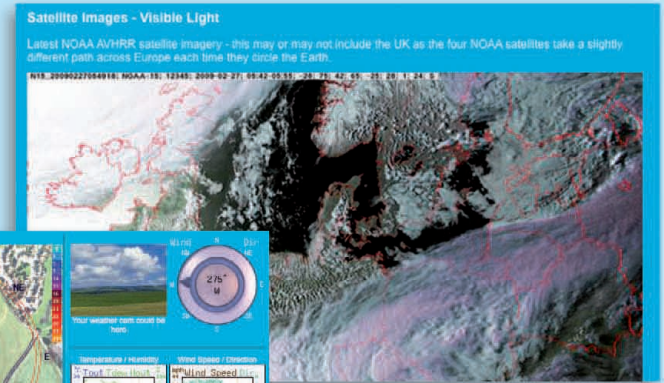
European Data

Not only is Skylink-pro populated with data from across the UK, you can also view a range of European data, from over 100 cities.



Satellite Images

View satellite and infrared images. Informative and interesting.



Data For Easy Comparison

Compare data from your station with over 100 locations nationwide.

Lightning Detection Systems

With many optional extras Skylink-pro can feature all the essential elements for your business.

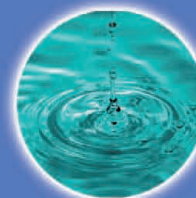
Applications



Ports & Vessels
Individual crane sensors flag alarms in the cab and the office.



Waste
Legal compliance made easy.



Water
Historic data at the touch of a button.



Airports
Crucial flight information when you need it most.



Education
Age specific sites designed for learning.



Tourism
Increase visitor satisfaction, promote learning, and ensure public safety.