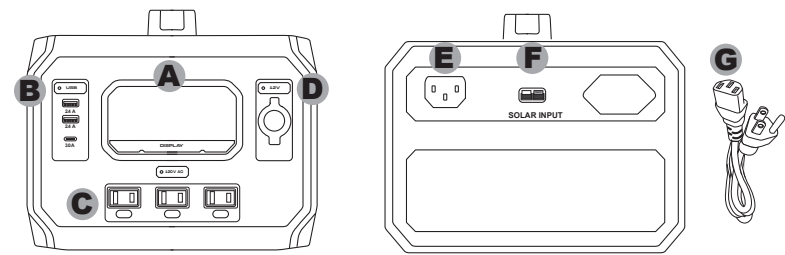


DURACELL®

PowerBlock™ 500 Gasless Generator

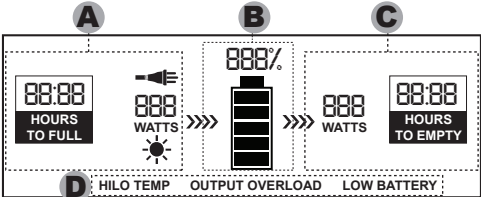
User Guide

Product Details



- A. Intelligent LCD screen: See details at right
- B. USB power button and ports
- C. AC power button and outlets
- D. 12V power button and accessory socket
- E. AC input port: Use AC charging cord (included)
- F. Solar charge controller
- G. AC charging cord

Intelligent LCD Screen Details



- A. Charging Input Indicators
 - Time to fully charge (hours to full)
 - AC or solar charge detected
 - Input wattage
- B. Fuel Gauge Indicators
 - Percentage of available battery power
 - Battery graph fuel gauge
- C. Power Output (Usage) Indicators
 - Total output wattage
 - Time remaining to empty at current output
- D. Warning Indicators
 - HI TEMP/LO TEMP
 - OUTPUT OVERLOAD
 - LOW BATTERY

Getting Started: Charging the PowerBlock

IMPORTANT - CHARGE BEFORE USE: Fully charge the PowerBlock before using it and/or storing it. Keep the unit plugged in when not in use so it is ready when you need it. The charger is designed to maintain the battery in a healthy state.

BEFORE YOU START: See “Safety Information” section for important precautions. The user should conform to all safety precautions in the guide. Keep this guide in a safe place for future reference.

IMPORTANT: The PowerBlock should be placed in a dry, well ventilated area with at least 6 inches of space on all sides for proper ventilation.

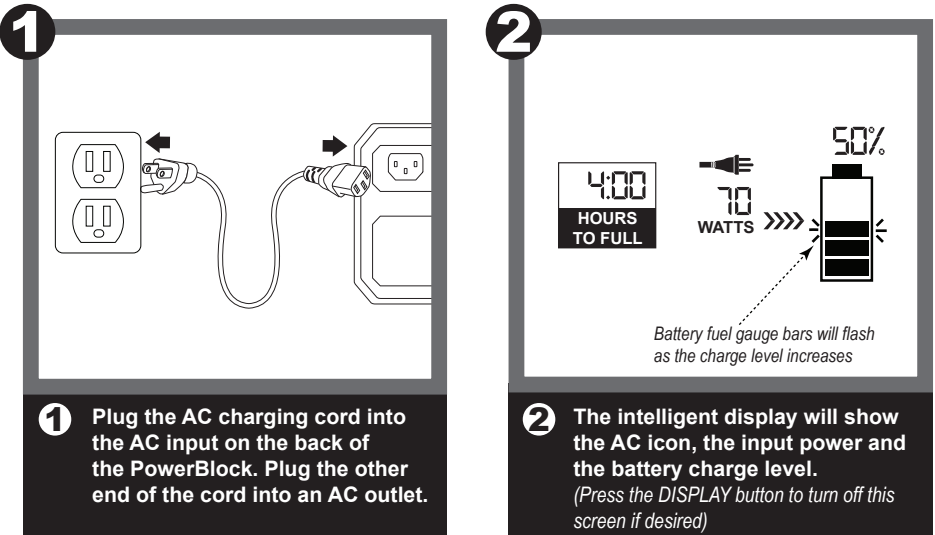
- The PowerBlock can be charged from grid power (AC) or solar energy (solar panels).
- When it is being charged and discharged (used to power your items) at the same time:
 - If the input power (charging the PowerBlock) is *greater* than the output power (used to power your items), the intelligent LCD screen will show the “Hours to Full”.
 - If the input power (charging the PowerBlock) is *less* than the output power (used to power your items), the intelligent LCD screen will show the “Hours to Empty”.
 - The LCD screen stays on during charging but it can be turned off by pressing the **DISPLAY** button below the screen.

If your PowerBlock is fully discharged (0% available power), the intelligent LCD screen will be completely dark. This screen will illuminate as soon as the PowerBlock is connected to power, letting you know that the unit is charging, and will continually display the growing power status as the PowerBlock charges.

Charging the PowerBlock from an AC outlet

Estimated Charge Time: 7 hours to full

NOTE: The internal 80W charger can deliver a net charge of up to 70W to the battery, so the maximum charging wattage that will show on the intelligent LCD screen is “70W” (this is normal).
NOTE: The 7 hour charge time may vary depending on your AC outlet power and the climate (PowerBlock may charge more slowly in very high or low temperatures).



Keep charged for immediate use

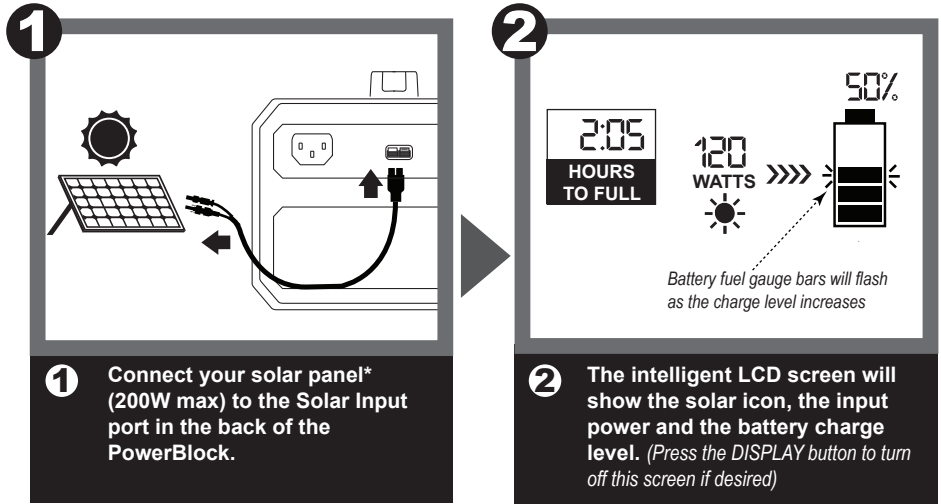
You may keep the PowerBlock plugged into your AC outlet for maintenance charging. The internal charger is designed to optimize power without overcharging the battery. We recommend keeping your PowerBlock charged so it provides maximum power when you need it.

Charging the PowerBlock from a solar panel

Estimated Charge Time: 4 hours to full

NOTE: The built-in MPPT solar control will automatically optimize the voltage and current to provide the most efficient charging to the PowerBlock.

NOTE: The 4 hour charge time may vary depending on solar exposure and the climate (PowerBlock may charge more slowly in very high or low temperatures).



Optimizing Your Solar Charging

The estimated 4-hour charge time is based on a 200 Watt solar panel in ideal clear, sunny conditions. The PowerBlock is compatible with all standard solar panels. You may also use smaller, lower-wattage solar panels to charge your PowerBlock (charge times will vary according to the wattage of your panel).

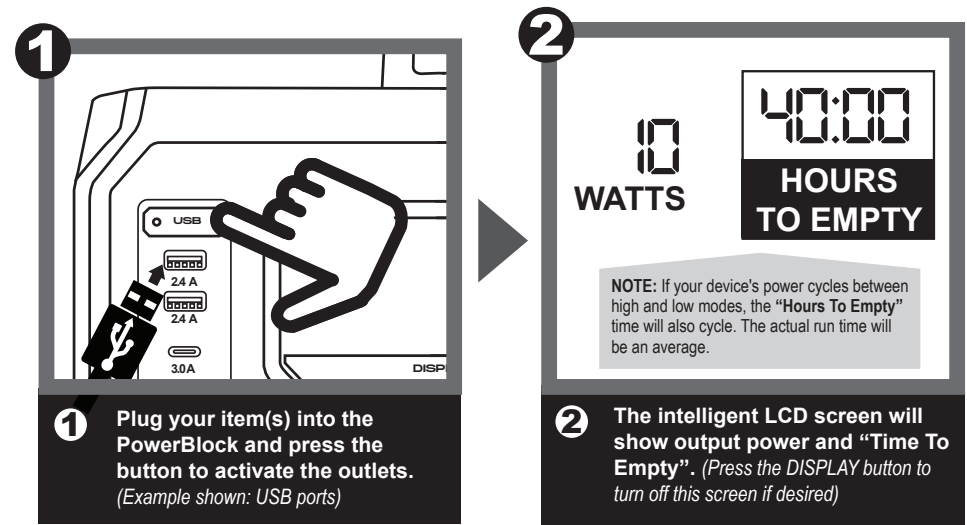
To obtain the fastest charge time, position your solar panel where it will receive the maximum exposure to direct sunlight. If the solar panel is placed in shade or is used in cloudy conditions, it may take significantly longer to charge your PowerBlock.

You may also keep the PowerBlock connected to the solar panel for continued charging. It is recommended to keep the PowerBlock charged so it is ready any time.

* The solar panel and cable are sold separately.

Using the PowerBlock

Each output type (USB, AC, DC) has a separate power button with an indicator light to show that it is on. When any port is on the intelligent LCD screen will also turn on. You can turn off the intelligent LCD screen at any time by pressing the DISPLAY button below the screen.



Connecting Multiple Items

You can power and charge several items at once using any combination of available AC/12V outlets and USB ports, as long as the total combined power draw of all connected items does not exceed 500 Watts.

Please note that the more items are connected, the faster your PowerBlock will consume its available battery power and need to be recharged.

Conserving Battery Power

When you are done using the outlet(s) and USB port(s), press the button again to turn them off. This will keep the internal battery from passively draining.

Additionally, when an output is not used for more than one hour it will automatically turn off to conserve battery power.

Household Items: Typical Estimated Run Times With PowerBlock

Device	Continuous draw (Watts)	Run Time
LED String lights	3.3W	151 hours
LED Light Bulb (100 W Equivalent)	14W	35.5 hours
LED Light Bulb (60 W Equivalent)	8.2W	61 hours
Incandescent light bulb	58.8W	8.5 hours
CPAP	53W	10 hours
TV (42" LED) (100 W) + DVR	48.3W	11 hours
Cable modem + Wi-Fi router	12.5W	40 hours
Bar Fridge (1.7cu ft)	50W	12 hours
Dorm Fridge/Mini Fridge (3.7 cu ft)	40W	12 hours
Mid Size Refrigerator (17 cu ft)	78W	7 hours
Ice Maker	90W	5.5 hours

Important Note:

These household items, power draw and run times are examples only and may vary. Consult the manual of your specific device for details on its actual power consumption.

Not Recommended For:

Air conditioners or items with heating elements such as space heaters, rice cookers and hot plates.

Additional high-surge devices such as circular saws, blenders and sump pumps are also not recommended for use with the PowerBlock.

Troubleshooting Guide

Your PowerBlock features several built-in protection features to ensure safe and efficient operation. Below is a guide which shows the typical faults that occur during normal operation and how to correct them and resume use. If a fault occurs, the following warning(s) will appear on the intelligent LCD screen. Please refer to the table below to safely correct any problems and allow your PowerBlock to reset and resume operation. If you have additional questions, please contact Customer Service at (800) 300-1857.

Fault Type	PowerBlock shutdown	What it means	What to do	Reset (PowerBlock resumes operation)
HI TEMP / LO TEMP	Yes (stops operation)	Your PowerBlock is too hot or too cold <i>(operating temperature range is -10° to 45° C / 14° to 113° F)</i>	Move the PowerBlock to a cooler or warmer location as needed	Automatic (Once proper temperature is reached)
OUTPUT OVERLOAD	Yes (stops operation)	Excessive power draw	Remove some of the connected items to lower the total draw on the PowerBlock	Manual (turn inverter ON)
LOW BATTERY	Yes (stops operation)	Low battery voltage (<9V)	Charge the PowerBlock	Automatic (Once charged to minimum level)

Safety Information

This section contains important safety information. Before using the product, READ ALL instructions and cautionary markings on or provided with the product, and all appropriate sections of this guide. The product contains no user-serviceable parts. SAVE THESE INSTRUCTIONS.

IMPORTANT SAFETY INSTRUCTIONS


WARNING – When using this product, basic precautions should always be followed, including the following:

- a) Read all the instructions before using the product.
- b) To reduce the risk of injury, close supervision is necessary when the product is used near children.
- c) Do not put fingers or hands into the product.
- d) Do not expose PowerBlock to rain or snow.
- e) Use of an attachment not recommended or sold by PowerBlock manufacturer may result in a risk of fire, electric shock, or injury to persons.
- f) To reduce risk of damage to the electric plug and cord, pull the plug rather than the cord when disconnecting the PowerBlock.
- g) Do not use the PowerBlock or appliance that is damaged or modified. A damaged or modified PowerBlock may exhibit unpredictable behavior resulting in fire, explosion or risk of injury.
- h) Do not operate the PowerBlock with a damaged cord or plug, or a damaged output cable.
- i) Do not disassemble the PowerBlock, take it to a qualified service person when service or repair is required. Incorrect reassembly may result in a risk of fire or electric shock.
- j) To reduce the risk of electric shock, unplug the PowerBlock from the outlet before attempting any instructed servicing.


PERSONAL PRECAUTIONS

- a) When charging the internal battery, work in a well ventilated area and do not restrict ventilation in any way.
- b) Do not expose a PowerBlock to fire or excessive temperature. Exposure to fire or temperature above 130°C / 266°F may cause explosion.


SAVE THESE INSTRUCTIONS

**WARNING: NO USER SERVICEABLE PARTS**


- There are no user serviceable parts in this unit, DO NOT attempt to open the PowerBlock; this is dangerous and will void the warranty..

**WARNING: HEAT GENERATION DURING CHARGING AND USE**

- Charging and discharging generates heat and requires proper air flow. Use in a ventilated area and ensure adequate clearance for the ventilation grills. Blocking the grills may cause overheating and damage to the unit.

**WARNING: RISK OF ELECTRIC SHOCK INJURY**

- Do not operate or store in moist conditions to avoid electric shock.
- If the unit gets wet wait for it to dry completely before using it.
- Do not insert foreign objects into any of the ports or openings.

**WARNING: RISK OF ELECTRIC SHOCK OR FIRE HAZARD**

- Review the specifications of the PowerBlock ports and all connected devices you intend to use.
- The output ports can generate dangerous voltages.
- Do not use the PowerBlock if it is damaged or any of the input or output cords are damaged.

Maintenance

In order to keep your DURACELL PowerBlock operating efficiently, periodically clean and maintain your unit using the simple steps below.

- Clean the surface of the PowerBlock when necessary. Always use a soft sponge or cloth for cleaning. A mild, non-abrasive cleaning detergent may be used to remove stubborn dirt.
 - Avoid using your PowerBlock in dirty conditions where foreign matter such as dust, dirt and moisture can clog the AC and USB outlets and charging ports. Keep the PowerBlock in a well-ventilated area away from direct exposure to outside elements whenever possible.
- Do not attempt to insert anything into the PowerBlock's openings to clean them, as this may result in injury or damage to the PowerBlock and void the warranty.
 - Do not attempt to repair the PowerBlock yourself, as this may result in injury or damage to the PowerBlock and void the warranty. Please contact our Customer Service at 800-300-1857.

Product Specifications

Battery	
Chemistry	Li-Ion
Capacity	478 Wh
Input	
AC Charger	120 VAC, 60 Hz, 80W
Solar Controller - MPPT	13-30 VDC, 200 W Max.
AC Outlet	
Number of outlets	3
AC Output	120 VAC, 60Hz, Pure Sine Wave
AC Output (continuous)	500 W
AC Output (5 min PowerBoost)	650 W
AC Output (3 sec PowerBoost)	1000 W
DC 12V Port (1x)	
9V-12.6V 10A	
USB Ports	
USB - A (2x)	5V, 2.4A, Total 4.8A
USB - C PD (1x)	5V / 9V / 12V / 15V / 20V, 3.0A, 60W Max

Operating Temperatures	
Charging	0° - 45° C / 32° - 113° F
Discharging (in use)	-10° - 45° C / 14° - 113° F
Certifications	
Safety	ANSI/CAN/UL2743
Efficiency	CEC/BC/DOE
EMI	FCC Part 15
Dimensions and Weight	
Length	27.0 cm / 10.6in.
Width	22.7 cm / 8.9 in
Height	20.0 cm / 7.9 in.
Weight	4.8 Kg / 10.6 lbs

FCC Information

This equipment has been tested and found to comply with the limits for a Class B digital device, pursuant to part 15 of the FCC Rules. These limits are designed to provide reasonable protection against harmful interference in a residential installation. This equipment generates, uses and can radiate radio frequency energy and, if not installed and used in accordance with the instructions, may cause harmful interference to radio communications. However, there is no guarantee that interference will not occur in a particular installation. If this equipment does cause harmful interference to radio or television reception, which can be determined by turning the equipment off and on, the user is encouraged to try to correct the interference by one or more of the following measures:

- Reorient or relocate the receiving antenna.
- Increase the separation between the equipment and the receiver.
- Connect the equipment into an outlet on a circuit different from that to which the receiver is connected.
- Consult the dealer or an experienced radio/TV technician for help.

Support and Warranty

Contacting Customer Support

If you experience any problems or have any questions regarding your DURACELL product, free technical support is available. Call from a phone where you have access to your DURACELL product.

- Be prepared to provide the following information:

 - Name, address and telephone number
 - Name of the DURACELL product
 - Make and model of any items or devices that you are using with the DURACELL product
 - Symptoms of the problem(s) and what led to them

Technical Support is available by telephone:
U.S. and Canada (800) 300-1857
Outside of the US/Canada: (805) 437-7765
Written inquires should be directed to: Battery-Biz Inc.;
DURACELL Product Inquiry
1380 Flynn Road, Camarillo, CA 93012, USA

Recycling Information

Battery-Biz is committed to environmental responsibility and recommends that electronic devices be disposed of properly. Please contact your local city offices for information on recycling and disposal programs for e-waste.


For instructions on how to recycle this product visit <http://www.call2recycle.org>.

Product Registration

For complete warranty coverage, please register your Duracell product within fourteen days of purchase.

Visit DuracellPower.com/Register

or scan the QR code below to register.



Additional Language Manuals

Manuales en idiomas adicionales • Manuels dans d'autres langues

Spanish and French language user manuals are available at duracellpower.com
Los manuales de usuario en español están disponibles en duracellpower.com
Les manuels d'utilisation en français sont disponibles sur duracellpower.com