

Spark Creativity

Ever since handmaking my very first calligraphy pen for my wife, I've been obsessed with designing practical and joyful creative tools that do justice to your beautiful work.

The Spark is no exception. It's my hope that it will be your go-to pen for creative expression. Whether that's illustration, calligraphy or writing, I've designed the Spark to be your everyday pen for remarkable creativity.

"You can't use up creativity, the more you use the more you have"

Maya Angelou

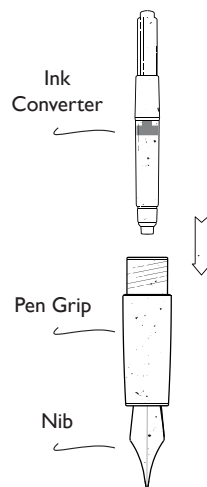
Designed by: *Tom Tipp*

Owned by:

tom's studio

1

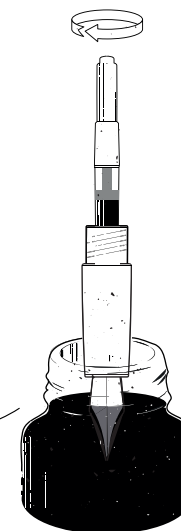
I recommend you flush your Spark pen thoroughly before use with nib cleaner, distilled water or water with a tiny amount of dish soap, then flush thoroughly with clean water and dry. Next, firmly push the ink converter into the pen grip. If you prefer you can use ink cartridges. I recommend using the converter as it feeds the pen with more ink which makes for a smoother more consistent writing experience.



2

Dip the entire nib into your ink and twist the end of the ink converter clockwise to draw ink up into the clear chamber. Then twist anti-clockwise to empty. Repeat until little or no air bubbles remain. Finally, twist the converter a little to push ink down into the nib and wipe off any excess. Now you're ready to start writing!

Make sure the ink you use is designed for fountain pens. i.e. **not** calligraphy ink as this can block the pen.

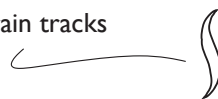


Have a soft cloth handy to clean up any excess ink
Top Tip

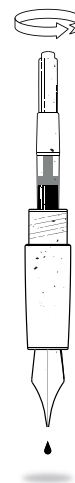
flex nibs:

If the nib starts writing like this when flexed:

Train tracks



unscrew the pen grip from the pen and twist the ink converter clockwise to push more ink into the nib, being careful not to overdo it (and create a Jackson Pollock!).

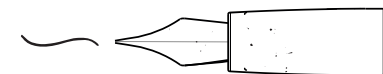


Once your pen is inked and ready to go, practice adding pressure to the nib and gradually releasing it to create variable line widths. I really recommend using Diamine ink (available on my site) as it flows beautifully and is available in over 100 colours.

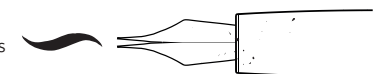
Like a good pair of leather shoes, the semi-flex nib will soften and become even more flexible with use. It will adapt to your style of writing and become unique to you.

The Pro-Flex Zebra G nib is a thick and thin stroke machine. The only downside is that the nib will occasionally need replacing as it will wear and/or corrode over time. Replacements and instructions are available on my site.

No Pressure



Pressure on the nib



For more detailed FAQs and video instructions please visit tomsstudio.com/pages/faqs

