



GB

Recordable Magic Post Box

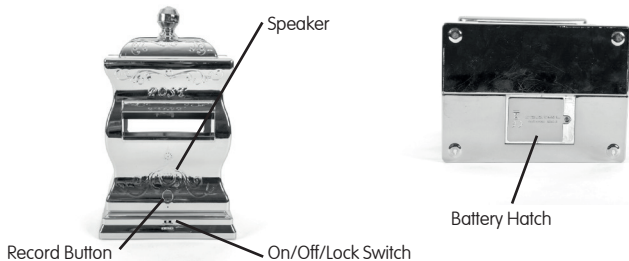


User Guide

www.tts-group.co.uk



Know Your Recordable Magic Post Box



Using Your Recordable Magic Post Box

Recording

- The post box can record a maximum of 30 seconds of audio.
- To make a recording, first move the slide switch to the "ON" position.
- Press the "REC" button and the post box will "BEEP" to show it is now recording.
- Speak into the microphone and when you want to finish recording, just press the "REC" button again.
- You will hear two "BEEPS" to indicate that the recording has finished.
- To record another message, just press the "REC" button again to record over the previous message.

Playback

- To Playback a recorded message, the slide switch must be in the "LOCK" position.
- Post a letter through the post box to hear your recorded message.
- Each time you post a letter through the post box will play back the same message until a new recording has been made.

Lock Position

- When the slide switch is in the "LOCK" position, the record function will be disabled.
- Move the switch to the "OFF" position when not in use to conserve the batteries.

Recordable Magic Post Box

Changing Batteries

- The Recordable Magic Post Box requires 3 x AA alkaline batteries (not supplied).
- Undo the screw to release the battery hatch using a small screwdriver.
- Insert the batteries carefully, making sure they are fitted with the correct polarity.
- Re-fit the battery hatch and re-tighten the screw.

Battery Precautions

- Batteries are to be inserted with the correct polarity.
- The supply terminals are not to be short-circuited.
- Only batteries of equal size and type should be used.
- Non-rechargeable batteries are not to be charged.
- Rechargeable batteries are only to be charged under adult supervision.
- Rechargeable batteries are to be removed from the toy before being charged.
- Different types of batteries or new and used batteries are not to be mixed.
- Exhausted batteries are to be removed from the toy.

Care & Maintenance

- If necessary, wipe Recordable Magic Post Box gently with a clean damp cloth.
- Keep the Recordable Magic Post Box away from direct sunlight and heat.
- Do not allow the Recordable Magic Post Box to come into contact with water or other liquids.
- If your Recordable Magic Post Box malfunctions please switch it off and then back on again to reset it.



Specification

Specifications

Record time	30 seconds
Battery type	3 x AA Alkaline batteries (not included)

Trouble Shooting

Problem	Solution
Post box will not record	Ensure the slide switch is set to "ON"
Product will not playback	Ensure the slide switch is set to "LOCK" The object being placed in the post box is too small to activate the sensors
Audio is quiet or distorted	Sound is too far or too close to the microphone or the batteries need replacing

Recordable Magic Post Box

Technical Support

Please visit www.tts-group.co.uk for the latest product information.

Email feedback@tts-group.co.uk for technical support.

TTS Group Ltd.
Park Lane Business Park
Kirkby-in-Ashfield
Nottinghamshire
NG17 9GU, UK.
Freephone: 0800 318686 Freefax: 0800 137525

WARNING: Do not dispose of this product in household waste.
Hand it over to a collection point for recycling electronic appliances.

WARNING: Not suitable for children under 36 months due to small parts - choking hazard.

Made in China, on behalf of TTS Group Ltd.

TTS Product Code:

EY07399



TTS is proud to be part of **RM** plc