

Warranty & Support

This product is provided with a one year warranty for problems found during normal usage. Mistreating the Easi-View or opening the unit will invalidate this warranty. All out of warranty repairs will be subject to a replacement fee.

Technical Support

Please visit www.tts-group.co.uk for the latest product information. Email feedback@tts-group.co.uk for technical support.

TTS Group Ltd.
Park Lane Business Park
Kirkby-in-Ashfield
Nottinghamshire,
NG17 9GU, UK.
Freephone: 0800 318686 Freefax: 0800 137525

TTS is proud to be part of **RM** plc

Easi-View™

WARNING: Do not dispose of this product in household waste. Hand it over to a collection point for recycling electronic appliances.



TTS Product Code:
EL00460



Easi-View™

Share work with the whole class, view 3D objects and take pictures and videos



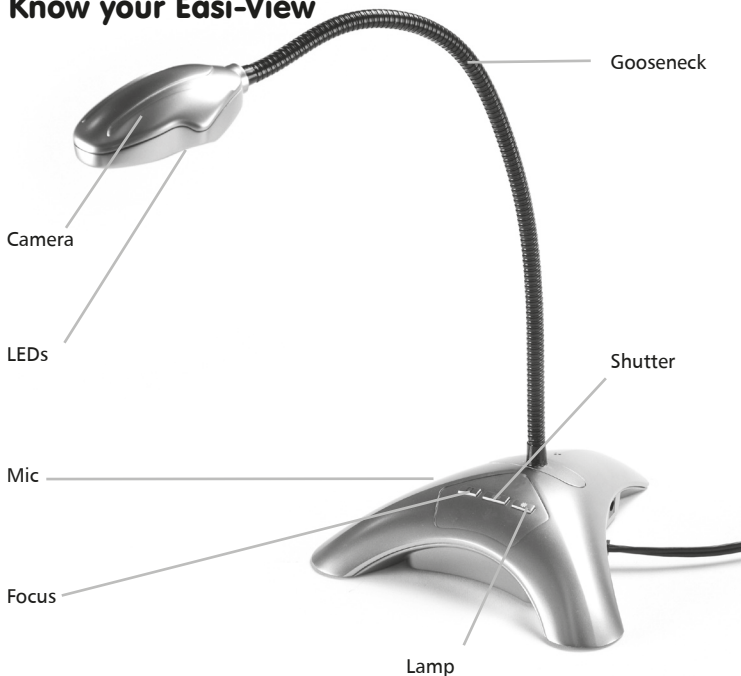
USER GUIDE



Important Information


- Please retain these instructions for future reference, as they contain important information.
- Do not allow your Easi-View to come into contact with water or other liquids.
- In the event of an electrostatic discharge, your Easi-View may malfunction. In this case, please unplug and reconnect it to reset it.

Know your Easi-View



Easi-View Controls

There are three buttons on the base of the Easi-View:

Press the  (snapshot) button to take a new picture.

Press the  (lamp) button to turn on the LEDs.

Press the  (focus) button to focus the Easi-View.



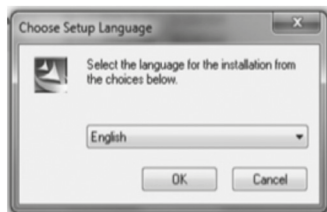
Connecting to a PC

- Before connecting the Easi-View to your PC, please first install the Easi-View software on your computer. It may be necessary to reboot the PC depending on your operating system.
- Plug the Easi-View into an available USB socket. No external power is required as the Easi-View is powered by any USB 2.0 port

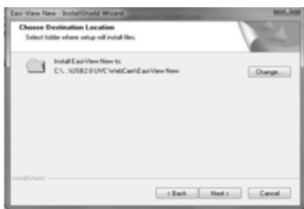


Installing Easi-View

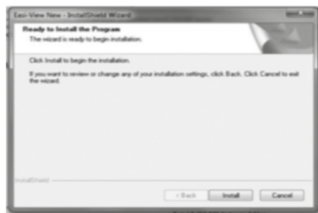
Windows 7 installation



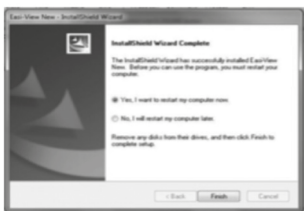
Choose your language and click on "OK" to continue.



Click on "Install" to continue



The software will now install on your computer.

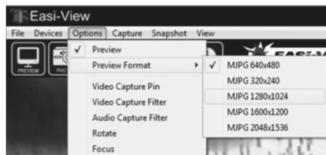


Click on "Yes, I want to restart my computer now", to finish the installation process.

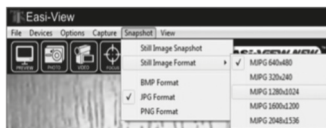
Mac OS installation

To install the Mac OS X version of the software, drag the dmg file from the disk onto the applications folder.

Software UI



The preview resolution of an image can be set in the options menu. Choose a resolution at least as good as your computer screen.



The preview resolution of an image can be set in the options menu. Choose a resolution at least as good as your computer screen.

Taking pictures



To take a picture use the snapshot button on the Easi View or simply click on the “photo” icon. To view your pictures, select “open my pictures” in the “View” menu and navigate to the folder which will be saved in date order.



If the image appears upside down, use the rotate function to flip the image so it is viewed the right way round.



The Easi View has an autofocus feature. You can re-focus at any time by clicking on the “focus” icon or on the focus button on the device itself.

Video capture



To capture live video, just click on the “video” icon. The icon will turn red and you will be asked for confirmation. To stop recording, just click on the icon once more. In the “capture” menu, there is an option to set the maximum capture time to prevent very large files being created.



Using Easi-View as a webcam


The Easi-View has a built in microphone and can be used as a web cam with popular applications such as Skype.

Technical Specification

- 3MP sensor
- Autofocus (10cm minimum)
- 4 x super-bright LEDs
- Flexible 40cm gooseneck
- USB 2.0+ powered

Troubleshooting

Easi-View is designed to work reliably and predictably in all normal conditions. However, it is possible that problems may occur. Please check the following before contacting technical support.

Problem	Auto Focus does not function
Solution	The PC has an internal web cam. This web cam must be disabled for your Easi-View to work correctly.
Problem	Image is too dark
Solution	Press the light button or use an external light source.
Problem	Image is blurred
Solution	Adjust the height of the item being viewed. Or adjust the height from which the item is being viewed
Problem	Image is blurred
Solution	Image is out of focus press the  (focus) button to bring the item into sharper focus. For very feint images, place some high contrast printed material under the Easi-View to enable the auto focus to function.

