

# Duralam Integra

## Desktop Laminator

The all new table top 27" Duralam Integra ECO-Load Laminator is packed with the best innovative features. It includes safety switches on all key components and hidden adjustable tension control for that extra peace of mind. The Duralam Integra is built with an extra long 13" power cord, a rear slide cutter, and variable speed settings. There are many available upgrade options including: extended warranty plans, safety power lock, rolling cart with bottom shelf and locking castors, footage counter and premium low melt films.

### Key Features

- Quick warm-up time
- Dual large diameter hot rollers
- User-friendly and easy to operate
- Rear exit cutter
- Powerful cooling fans
- One-year warranty (machine) / two-year warranty (parts)



### Adjustable Speed Control:

Slow speed setting for easy feeding of small flash cards, bookmarks, etc. which eliminates laminate wastage.

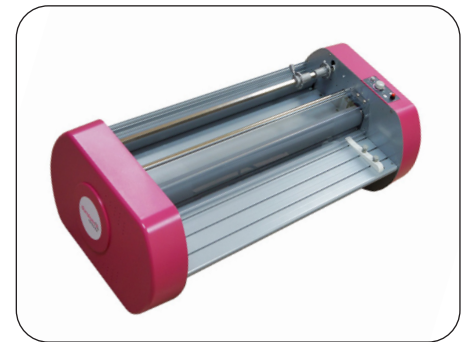


### Optional Colored Side Panels:

Side panels are now available in pink.



Hot roller infrared technology



Description	Specifications
Dimension	38"L x 19"W x 11.5"H
Weight	124 lbs
Power Requirement	110 v
Power Consumption	1470 w
Warm-Up Time	5 minutes

Description	Specifications
Temperature Control	Adjustable (302°F max)
Max. Laminating Width	27"
Max. Laminating Speed	4.5ft/min
Max. Laminating Thickness	3 mm
Warranty	1 year (machine) / 2 year (parts)