



Mopit Mid

Operator's / Service Manual





To view Mopit Mid instructional videos scan this QR code. You can also find Mopit Mid instructional videos on the Mopit channel at www.youtube/spectrummopit.com

Table of Contents

BASIC OPERATION	
Mopit safety information	4
Filling the fresh water tank	4
Using Mopit cleaning solution	4
Mopit switches	5
Handlebar adjustment	5
Water level gauge	5
Draining the dirty water	6
Charging the Mopit	6
Water valve	7
Transporting the Mopit	7
Squeegee lift pedal	7
MAINTENANCE / MOPIT SERVICE	
Cleaning the water filter	8
Draining the fresh water tank	8
Squeegee replacement	9
Brush pressure adjustment	10
Belt replacement and tensioning	11
Brush replacement	12
Cleaning the recovery tank	13
Battery pack replacement	14
Brush motor replacement	15
Battery charger replacement	16
Vacuum motor replacement	16
Water solenoid replacement	17
Water drip tube replacement	17
Drain hose replacement	18
Idle bearing replacement	18
Drive bearing replacement	18
TROUBLESHOOTING	
Not getting any water	19
Batteries not charging	19
Mopit is leaving black marks	19
Mopit smells when I use it	19
Mopit shocks me when in use	19
Mopit leaks when not in use	20
Mopit not cleaning well	20
Mopit is not picking up water	21
SPECIFICATIONS	
Mopit parts diagrams	22-37



Scan this QR code to watch the Mopit Mid training video. You can view all of our Mopit movies on the “Mopit Channel” at www.youtube.com/spectrummopit.

BASIC OPERATION

WARNING!!!!

- Do Not Use or Pick Up Flammable Materials with the Mopit.
- Do Not Use Mopit Near Flammable Liquids or Vapors.
- Disconnect Battery Cables and Charger Cord Before Servicing.
- Do Not Use or Store Outdoors.
- Do Not Use Bleach in the Mopit

Before using the Mopit Mid you need to fill it with water and cleaning solution.

Filling The Fresh Water Tank

This is where you fill the Mopit with water. It is best to add the cleaning solution after you have filled the tank with water. It is **ok** to let water stay in the fresh water tank for an extended period of time.

Using Mopit Cleaning Solution

Mopit cleaning solution is very concentrated. It only takes one ounce of solution per Mopit tank for normal cleaning. For greasy floors you can use 2-3 ounces of solution per Mopit fill.

Each individual pouch of Mopit Cleaning Solution is one ounce.



Scan this QR code to watch the handlebar adjustment video. You can view all of our Mopit movies on the “Mopit Channel” at [www.youtube.com/spectrummopit.com](http://www.youtube.com/spectrummopit)



BASIC OPERATION

The Mopit Has 3 Switches

- The Brush Switch
- The Solution Switch
- The Vacuum Switch

Simply turn on all three switches and walk. The solution switch will work only when both the brush and solution switches are on.

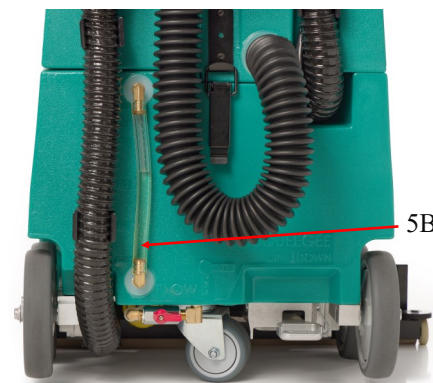
When operating the Mopit you may walk at a normal pace. If there is a really dirty area, cleaning performance is increased by pushing the Mopit slower.

Handlebar Adjustment

To adjust the handlebar height simply lift up the handlebar quick release lever (5A), adjust the handle, and then push the quick release lever back down. If the quick release lever ever needs to be adjusted, twist the handle clockwise.

Water Level Gauge

Clean tank water level gauge (5B). The tank holds 4.75 gallons of water. The recovery tank holds 7 gallons of water.



BASIC OPERATION

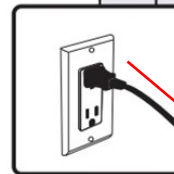
Draining The Dirty Water

It is important to drain the dirty water tank after each use. If dirty water sits in your dirty water tank for an extended period of time, your machine will start to stink. Simply remove the drain hose cap and let the drain hose down onto a floor drain. After draining, be sure to put the cap on tightly. If the cap is not screwed on tight the machine will lose suction power.



Charging The Mopit

The Mopit is battery operated. Keep the Mopit plugged in whenever it is not being used. You do **not** need to wait until the battery is fully charged to use the Mopit. You do **not** need to completely run the battery down before you can charge the Mopit. To charge the Mopit plug the battery charger into the wall. The on-board charger has one indicator light. The light will be red or amber when it is charging and green when fully charged.

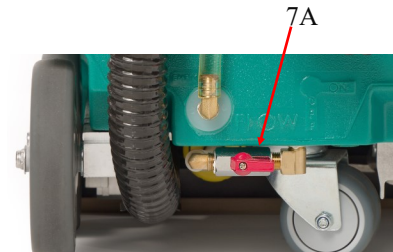


BASIC OPERATION

Water Valve

The red water valve (7A) controls how much water goes onto the floor.

The water valve is full **on** when the red valve handle is horizontal, and full **off** when the handle is vertical. To decrease water output, position the valve between full on and full off.

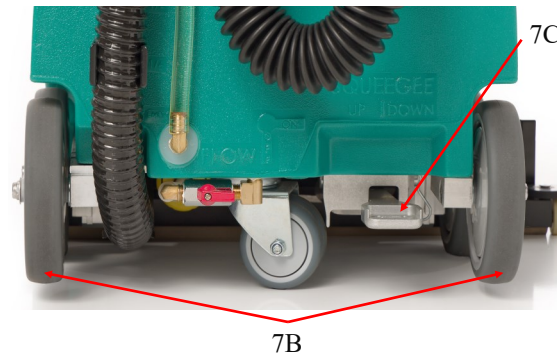


Transporting The Mopit

When moving the Mopit, tip it on its back transport wheels (7B) and move it like an upright floor vacuum.

Squeegee Lift Pedal

The squeegee lift pedal (7C) is used for deep cleaning. It allows you to make multiple scrubbing passes without picking up the water on the floor. This is called double scrubbing. To lift the squeegee, push the pedal down and slide it to the left. To lower the squeegee, push the pedal down and slide it to the right.



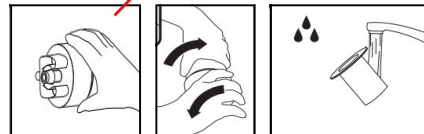
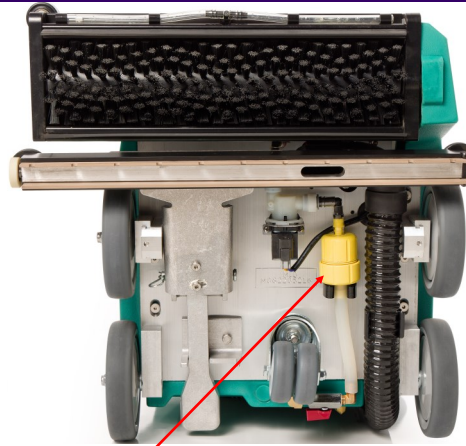


Scan this QR code to watch the Mopit water filter video. You can view all of our Mopit movies on the “Mopit Channel” at www.youtube.com/spectrummopit.com

MAINTENANCE / SERVICE

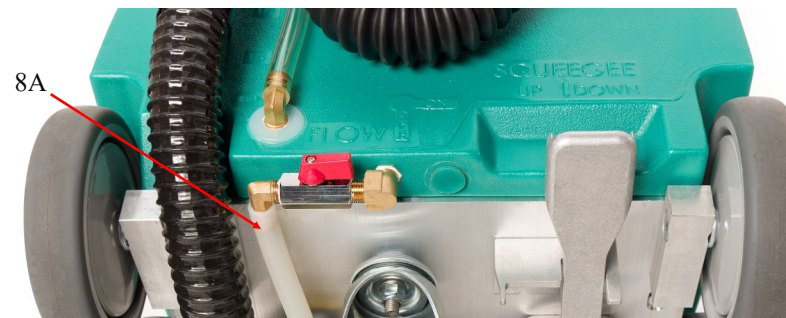
Cleaning The Water Filter

When you are not getting enough water onto the floor, clean the water filter. Before you clean the fresh water filter make sure that the water valve is turned off (see page 7) Tip the Mopit on its back, pull filter out of its clip, pull off the water lines, twist the filter housing apart and remove and rinse out the filter.



Draining The Fresh Water Tank

Occasionally you may need to drain the fresh water tank. The tank will need to be drained before shipping. There is no harm in leaving water in the fresh water tank for an extended period of time. You will want to have the machine outside or positioned over a floor drain when you drain the tank. Remove the water line (8A) from the water valve and open the valve.



Scan this QR code to watch the Mopit squeegee replacement video. You can view all of our Mopit movies on the “Mopit Channel” at www.youtube.com/spectrummopit.com

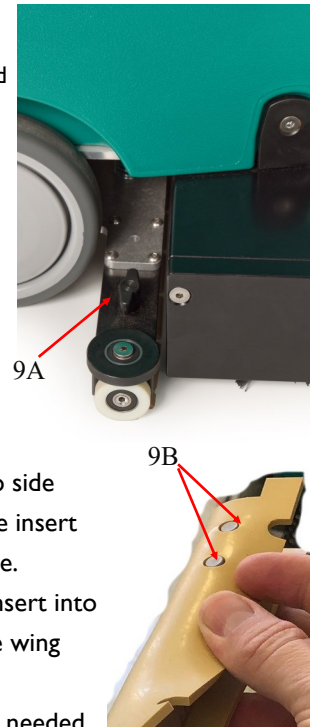


MAINTENANCE / SERVICE

Changing The Squeegee Blade

Depending on use, the squeegee blade will need to be changed every 2-6 weeks. If the machine is leaving streaks, and not picking up all of the water, or the Mopit is not cleaning very well, check your squeegee blade for wear.

1. Tip the Mopit on its back.
2. Remove squeegee wing nut (9A).
3. Pull out the squeegee insert and remove the squeegee blade.
4. Place the new squeegee blade over the squeegee insert.
5. Hold the squeegee blade over the two side dowel pins (9B) and slide the squeegee insert pin into the squeegee bar receiver hole.
6. Push the remainder of the squeegee insert into the squeegee bar (9C) and replace the wing nut.
7. Replace the white squeegee wheels as needed.





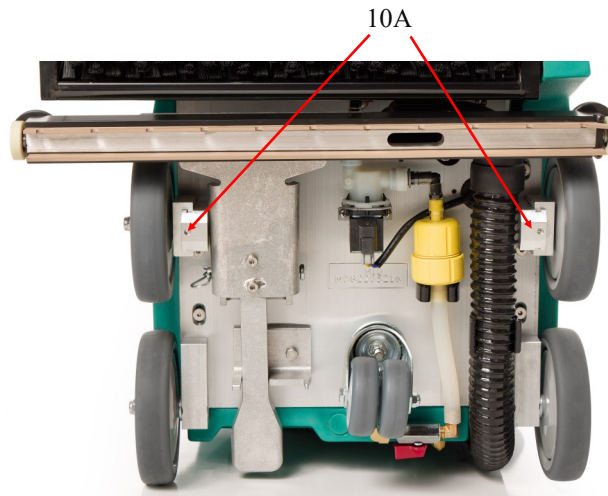
Scan this QR code to watch how to adjust the brush pressure. You can view all of our Mopit movies on the “Mopit Channel” at www.youtube.com/spectrummopit.com

MAINTENANCE / SERVICE

Adjusting The Brush Pressure

WARNING: Adjusting the brush too low can damage the brush motor and reduce the cleaning performance.

As the scrub brush wears, the brush pressure on the floor will lessen. To compensate for brush wear, adjust the wheels to lower the brush head.



To adjust the brush pressure, tip the machine on its back. Insert the on-board 5/32 Allen wrench into the wheel block windows(10A). Turn the Allen wrench counterclockwise one complete turn. Adjust both wheels by the same amount.

IMPORTANT: You must adjust each wheel by the same amount. Failure to do so will cause un-even brush wear. If you don't know if the wheels have both been evenly adjusted, turn each screw as far as you can clockwise, then begin again to adjust each wheel counterclockwise by the same amount. It is wise, with each full turn of the screw, to stand the machine back up and check the brush deflection from the side of the machine. **We recommend one inch of brush width touch the floor but only a 1/4 inch of brush depth on the floor.**

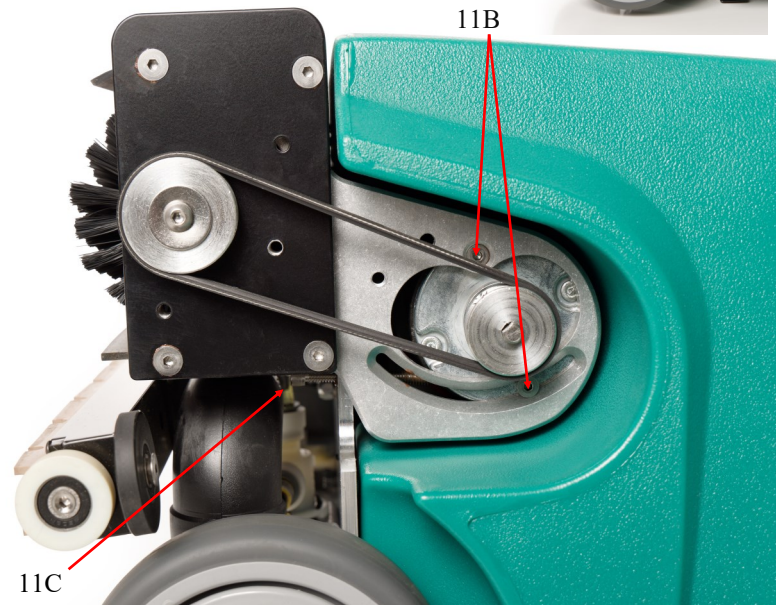
Scan this QR code to watch how to replace and tension the belt. You can view all of our Mopit movies on the “Mopit Channel” at www.youtube/spectrummopit.com



MAINTENANCE / SERVICE

Belt Replacement And Tensioning

1. Tip the Mopit on its back.
2. Remove belt cover by turning the belt cover thumb screws(11A) counter clockwise.
3. Loosen these two 1/8” Allen screws (11B) With a 3/16” Allen wrench, twist the belt tensioning screw (11C) counter clockwise.
4. Remove old belt.
5. Installation is the above steps in reverse.
6. Tension belt to 3/8” deflection.



Scan this QR code to watch how to replace the brush. You can view all of our Mopit movies on the “Mopit Channel” at www.youtube.com/spectrummopit.com

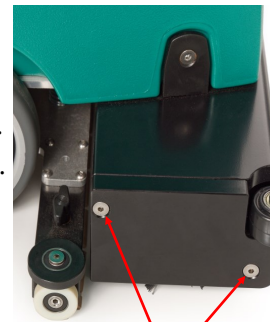


MAINTENANCE / SERVICE

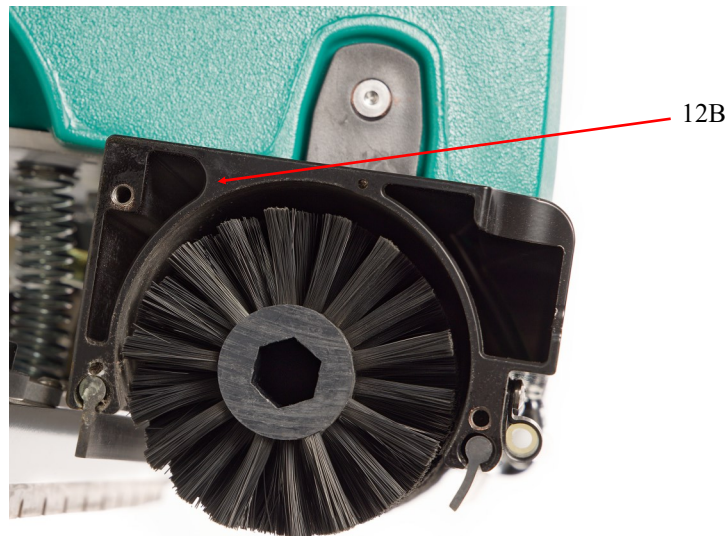
Brush Replacement

The Mopit Mid scrub brush is very durable and should last at least one year. As the brush wears it can be lowered by following the instructions on page 10. For replacement follow the steps below.

1. Use the on-board 5/32 Allen tool to remove the two idle plate screws (12A).
2. Pull off the bearing plate.
3. Pull the old brush out of the hood (12B).
4. Installation is the above steps in reverse .



12A



12B

MAINTENANCE / SERVICE

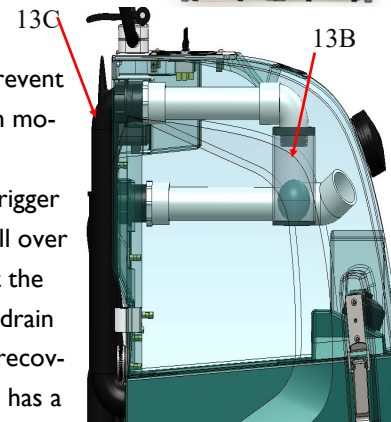
Cleaning The Recovery Tank And Vacuum Filter

If the recovery tank is not cleaned out regularly the Mopit will begin to stink. To clean, remove the clean out access cap (13A) by twisting it counterclockwise. Open the drain hose and place it over a floor drain. Use a hose with a sprayer to spray out the recovery tank. It may also help to back flush the drain hose. Take special care to spray off the vacuum filter/shut off valve (13B).



Note: Disconnect the vacuum hose (13C) from the top tank to prevent water from getting into the vacuum motor.

After spraying out the tank, use a trigger sprayer to spray undiluted bleach all over the inside of the recovery tank. Let the tank sit with the clean out cap and drain hose cap off until the inside of the recovery tank is dry. If your machine still has a foul odor, order some Mopit deodorizer from Spectrum.





Scan this QR code to watch how replace the battery.
You can view all of our Mopit movies on the
“Mopit Channel” at
www.youtube/spectrummopit.com

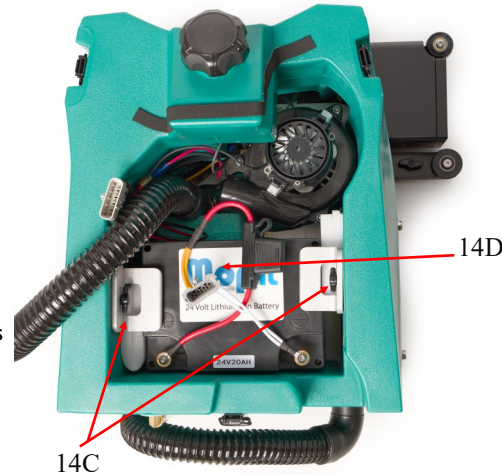
MAINTENANCE / SERVICE

Replacing The Battery Pack

A properly cared for lithium battery pack should last for about 2000-3000 charging cycles.

IMPORTANT: It is critical that the batteries be replaced with 24Volt LiFePo4 Lithium batteries.

1. Drain the recovery tank (Pg 6).
2. Pull the squeegee and vacuum hoses (14A) out of the back of the recovery tank.
3. Unlatch the three latches, (14B) (two on the side and one on the back).
4. Lift the recovery tank off the machine and lay it on its side.
5. Disconnect the battery electrical quick disconnect.
6. Remove the two thumb screws (14C) for the battery mounts.
7. Lift out the battery (14D).
8. Battery replacement is the above steps in reverse.



Scan this QR code to watch how to replace the brush motor. You can view all of our Mopit movies on the “Mopit Channel” at [www.youtube.com/spectrummopit.com](http://www.youtube.com/spectrummopit)



MAINTENANCE / SERVICE

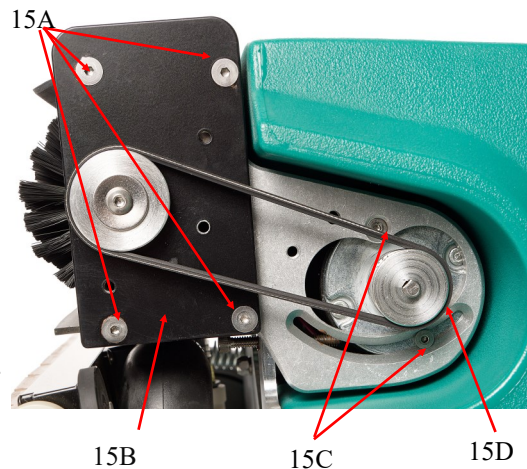
Brush Motor Replacement

On rare occasions the brush motor may need to be replaced. Please call Spectrum at 1-800-290-2833 to troubleshoot and see if your brush motor needs to be replaced. The brush motor is equipped with an automatic thermal circuit breaker. If the brush motor overheats the breaker will trip and will reset again when the motor cools down.

You **do not** need to remove any of the plastic tanks for motor replacement. It is easiest to replace the brush motor with the Mopit on its back.

You will need a 5/32, 1/8, and 3/16 Allen wrenches.

1. Follow the steps on page 11 to remove the belt.
2. Remove the four Allen bolts (15A) using a 5/32 Allen wrench.
3. Pull the drive plate (15B) out of the brush.
4. Remove the motor plate by removing the two motor screws (15C) using a 1/8 Allen wrench. Transfer the pulley (15D) onto the new motor by loosening the pulley set screw. Take note of the depth of the pulley on the motor shaft.
5. Remove the brush motor by disconnecting the 2 electrical wires.
6. Replacement is the above steps in reverse.
7. **TIP:** When replacing the pulley, be sure to reinstall it at the same depth on the motor shaft.





Battery Charger Replacement



Vacuum Motor Replacement

MAINTENANCE / SERVICE

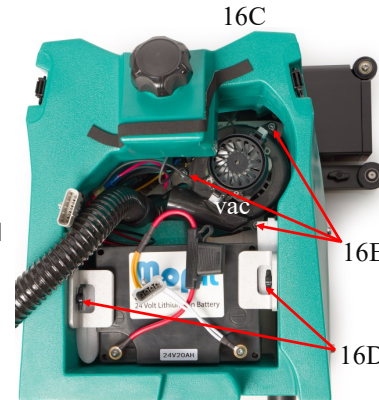
Battery Charger Replacement

If the power light does not come on when plugged in, or if the battery is not accepting a charge, the charger may need to be replaced. To replace remove the thumb screw, lift the hinged cover (16A) disconnect electrical and pull charger free. Make sure to transfer the power cord gromet to the new charger.



Vacuum Motor Replacement

1. Drain the recovery tank per instructions on page 6.
2. Pull the Vacuum and Squeegee hoses (16B) out of the back of the recovery tank.
3. Unlatch the three latches (16C) to remove the recovery tank
4. Disconnect the battery electrical quick disconnect.
5. Remove the two thumb screws (16D) for the battery mounts and remove the battery.
6. After disconnecting the two vacuum electrical quick disconnects use a 7/16 Ratchet with an extension to remove the 3 nuts(16E) that hold the vacuum in place and remove the vacuum motor.
7. For replacement follow the above steps in reverse.



Note: Do not remove the white spacers.



Solenoid Replacement

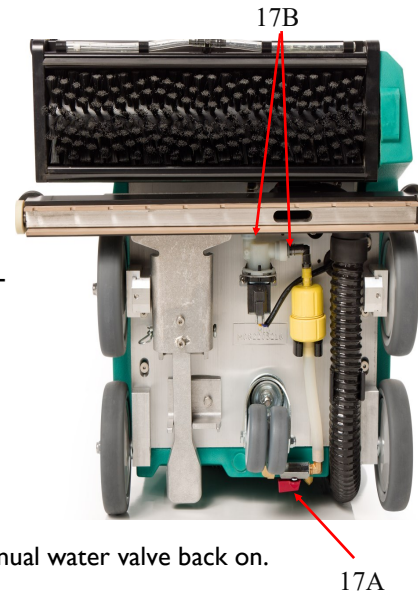


Drip Tube Replacement

MAINTENANCE / SERVICE

Replacing Water Solenoid

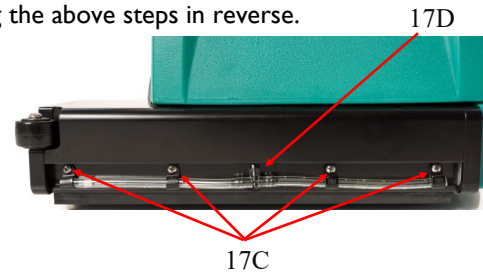
1. Turn off the manual water valve (17A).
2. Disconnect the solenoid electrical quick disconnect.
3. Remove the two solenoid mounting screws with a Phillips screwdriver.
4. Press in the two hose retaining clips (17B) and pull out the two hoses.
5. To replace follow the above steps in reverse.
6. Don't forget to turn the manual water valve back on.



Replacing the Drip Tube

Occasionally you may need to replace your drip tube if it becomes filled with debris or you can't get water consistently out of it.

1. Turn off the manual water valve.
2. Slide the drip tube out of the 4 clamps (17C).
3. Pull the drip tube off of the tubing at the tee (17D).
4. Replace by following the above steps in reverse.





Drain Hose Repl.



Idle Bearing Repl.



Drive Bearing Repl.

MAINTENANCE / SERVICE

Drain Hose Replacement

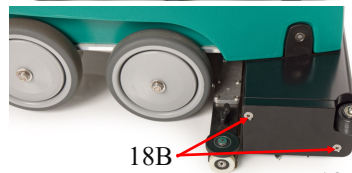
1. Drain the dirty water (page 6).
2. Loosen the hose clamp (18A) with a nut driver or flat-head screwdriver and pull off the hose.
3. Replace the hose and tighten the hose clamp.

18A



Idle Bearing Replacement

1. Remove the two Idle plate screw (18B) using the on-board 5/32 Allen tool and remove the idle plate.
2. Remove the 3/16 Allen-head screw (18C) and pull off the old bearing idle cup (18D).
3. Replace the idle cup / bearing assembly.



18B

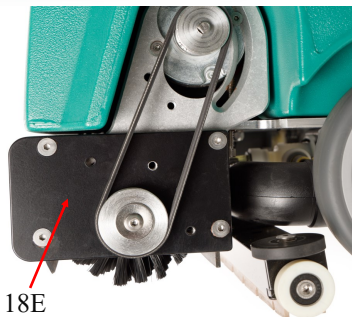
18C

18D



Drive Bearing Replacement

1. Follow the instructions on pages 11 and 15 for removing the brush, brush motor and belt.
2. Pull off the bearing plate (18E) and replace with a new bearing plate assembly from Spectrum.
3. See exploded view on page 31.



18E

Scan this QR code with to watch how troubleshoot the water system. You can view all of our Mopit movies on the “Mopit Channel” at www.youtube/spectrummopit.com



TROUBLESHOOTING

Not Getting Any Water

1. Make sure the brush and solution switches are both on.
2. Check to make sure the manual water valve (page 7) is turned on.
3. Check to make sure there is water in the fresh water tank.
4. Clean the fresh water filter as shown on page 8.
5. Check to make sure you are getting water past the fresh water filter. Pull off the tubing below the filter and open the manual water valve to make sure water comes out.
6. Check to make sure that the solenoid “clicks” when you turn on the brush motor and flip the solution switch on and off.
7. Replace the drip tube. See page 17.

Mopit Battery Not Charging

1. Check to make sure that the charger power cord is plugged into the charger and is in good condition and that your power outlet is working.
2. Call Spectrum for troubleshooting and battery reset. Also see page 16 on charger replacement.

Mopit Is Leaving Black Marks

The most common cause is not getting water onto the floor. Black marks can also be caused by missing or worn squeegee wheels. See above for how to fix water issues and page 9 for squeegee replacement.

Mopit Machine Smells When I Use It

The Mopit will stink when the recovery tank is not cleaned out regularly. See page 13 for how to clean the tank.

Mopit Machine Is Shocking Me When In Use

Static shocks happen when no water is getting to the floor. The static electricity from the spinning brush causes the static shock. To fix this issue follow page 19 on not getting any water.



Scan this QR code to watch how to troubleshoot the charging system. You can view all of our Mopit movies on the “Mopit Channel” at [www.youtube.com/spectrummopit.com](http://www.youtube.com/spectrummopit)

TROUBLESHOOTING

Mopit Machine Leaks When Not In Use

The most common cause for this is a faulty solenoid. Until you replace the solenoid simply turn off the manual water valve (page 7) when the Mopit is not in use. Also see solenoid replacement (page 17). The leak may also be coming from a drain hose that has a hole in it.

Mopit Not Cleaning Well

Several factors determine how well the Mopit will clean.

1. **Water:** use hot water for best cleaning. If insufficient water is getting on the floor or the water delivery is uneven, the cleaning performance will be poor. See page 19 Not Getting Any Water, to make sure water delivery is working.
2. **Brush Pressure:** see adjusting and checking brush pressure (page 10).
3. **Suction and water recovery:** If your machine is not sucking up the water well, see page 21 for help. You can also lift the squeegee to double scrub very dirty areas see page 7 (Squeegee pedal).
4. **Battery Charge:** If your battery is weak you won't have much suction or scrubbing power. See page 6 and page 19 on battery charging.
5. For more help call Spectrum 1-800-290-2833.

Scan this QR code to watch how to troubleshoot the suction system. You can view all of our Mopit movies on the “Mopit Channel” at www.youtube/spectrummopit.com



TROUBLESHOOTING

Mopit Is Not Picking Up Water

If the Mopit is not picking up water, there is an issue with the water recovery system. Here are the things to check:

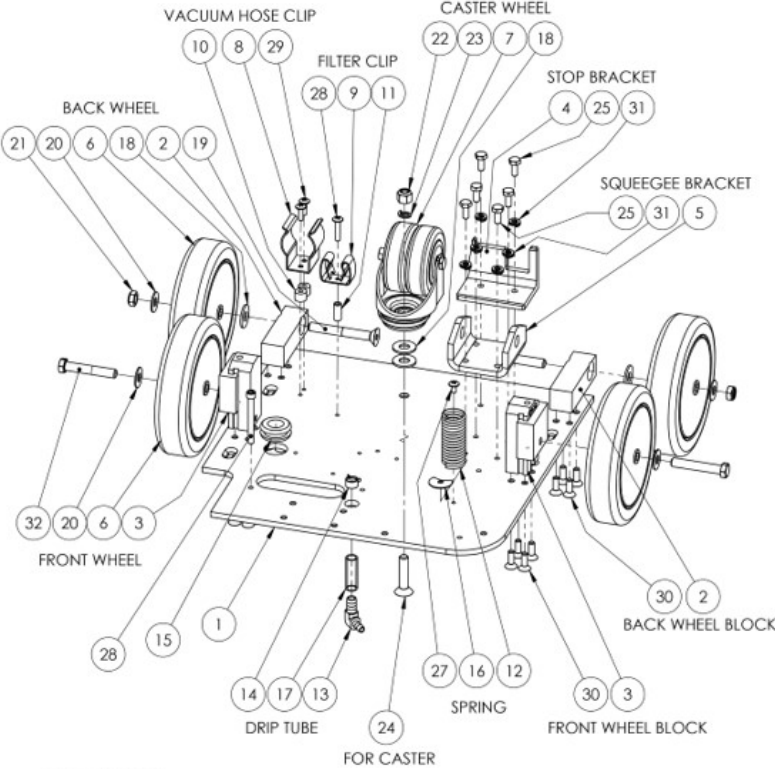
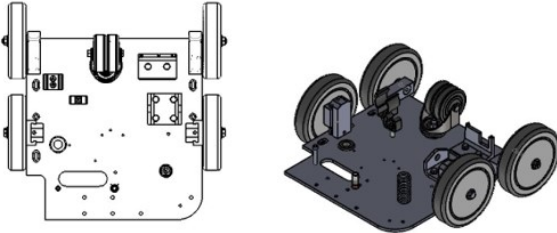
1. Check the squeegee blade for wear and replace if necessary (page 9).
2. Make sure the squeegee lift (21A) is in the down position (page 7).
3. Make sure the drain hose cap is screwed on tightly.
4. Make sure the Squeegee hose (21B) is firmly inserted into the hose receiver.
5. Check the vacuum hose (21C) for obstructions.
6. Flush water down the Squeegee hose to clear any clogs, Lots of water should come out of the squeegee bar during the flushing. **Note:** Do not put water down the vacuum hose.
7. Make sure the dirty water tank clean out cap is on (page 13).
8. Make sure the dirty water tank is empty.
9. Check the Vacuum filter/shut off inside the dirty water tank to make sure that its clean, if dirty spray it off (page 13).
10. Turn on the Vacuum switch and feel the squeegee hole for suction.
11. Make sure the squeegee hole is clear.
12. Make sure both squeegee wheels are intact and in good condition, replace if worn or missing.



BASEPLATE UNDERCARRIAGE ASSEMBLY, MID

ITEM NO.	QTY.	SIP NUMBER	Rev.	DESCRIPTION
1	1	SIP-00001579	B	BASE PLATE, MID
2	2	SIP-00001582	A	TRANSPORT WHEEL BLOCK, MID/MAX
3	2	SIP-00001554	A	WHEEL ADJUSTER MOUNT ASSEMBLY, MINI/MID/MAX
4	1	SIP-00001585	-	SQUEEGEE STOP BRACKET, MID
5	1	SIP-00001588	-	UPPER SQUEEGEE BRACKET, MID
6	4	SIP-00001196	-	6"x1.25" TRP WHEEL
7	1	SIP-00001591	-	75 MM SWIVEL CASTER WHEEL WITH HOLE FITTING, MINI/MID/MAX
8	1	SIP-00001177	-	1.5" VACUUM HOSE GRIPPER CLIP, MINI/MID/MAX
9	1	SIP-00001179	-	FILTER HOSE GRIPPER CLIP (3/4")
10	2	SIP-00001181	-	1/2 OD - 3/8" L SPACER FOR #10 SCREW
11	1	SIP-00001183	-	5/16" OD X 3/4" L SPACER FOR #10 SCREW
12	1	SIP-00001185	-	3.25 L x .7/8 OD SPRING, SQUEEGEE, MINI/MID/MAX
13	1	SIP-00001192	-	3/8 X 1/4 HOSE BARB ELBOW
14	1	SIP-00001194	-	1/2" RED SPRING ACTION HOSE CLAMPS
15	1	SIP-00001190	-	RUBBER GROMMET FOR 1" DIA x 1/4 THK HOLE
16	1	SIP-00001188	-	1.0" OD PACMAN WASHER, FOR SIZE #10 SCREW
17	1	SIP-00001203	-	.375 ID X .5 OD CLEAR TUBING
18	4	SIP-00001221	-	3/8 ID X 1.0 OD SAE WASHER
19	2	SIP-00001215	-	3/8-16 X 3" FHSC
20	4	SIP-00001207	-	3/8" ID X 7/8 OD X .054 THK WASHER
21	2	SIP-00001209	-	3/8-16 NTE NYLOCK NUT - SHORT
22	1	SIP-00001219	-	3/8-16 NYLOCK NUT
23	1	SIP-00001211	-	3/8 ID 1/2 OD SPLIT LOCK WASHER
24	1	SIP-00001217	-	3/8-16 x 1.75 FHSC
25	6	SIP-00001230	-	1/4-20 X 5/8 HEX CAP SCREW
26	1	SIP-00001201	-	10-24 X .375" PHIL TRUSS SCREW
27	1	SIP-00001205	-	1/4-20 X 2.25 SHCS
28	1	SIP-00001223	-	10-24 X 1" PHILL TRUSS SCREW
29	2	SIP-00001225	-	10-24 X 5/8" PHIL TRUSS SCREW
30	16	SIP-00001153	-	1/4-20 XX .75" FLATHEAD SOC
31	12	SIP-00001113	-	1/4" SPLIT LOCK WASHER
32	2	SIP-00003767	-	3/8-16 X 2.25 HEX HEAD SCREW

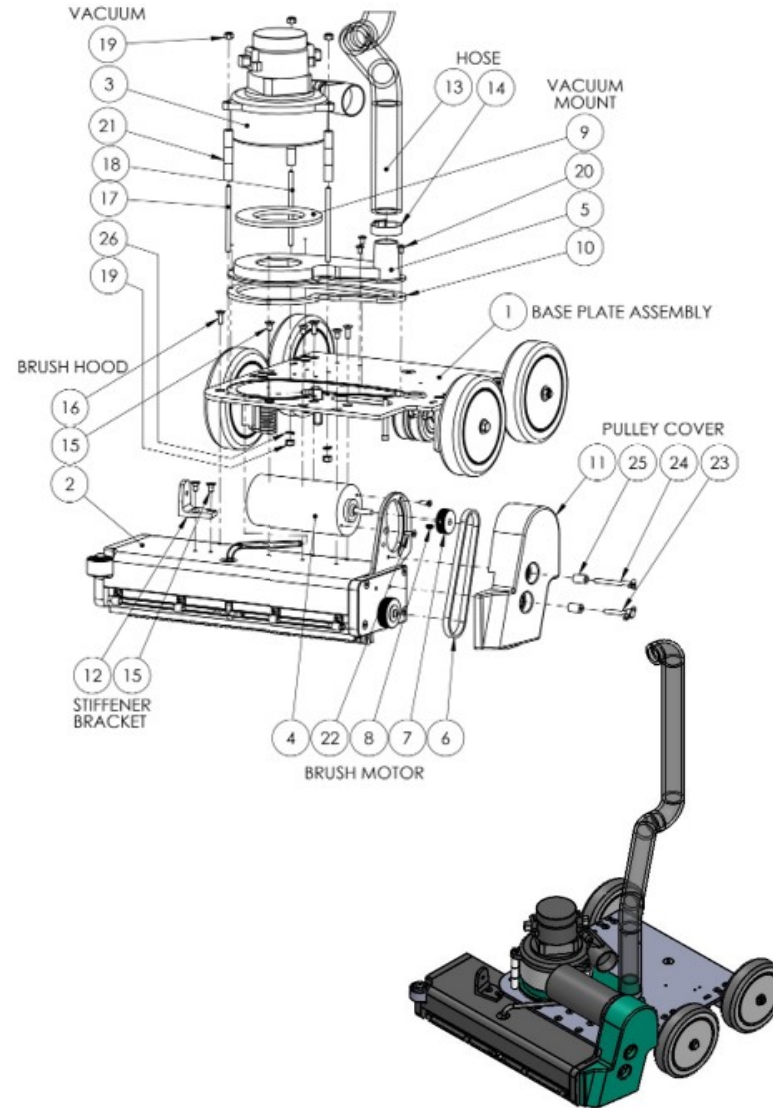
BASEPLATE UNDERCARRIAGE ASSEMBLY, MID



BASE PLATE BRUSH HOOD VAC ASSEMBLY, MID

ITEM NO.	QTY.	SIP NUMBER	Rev.	DESCRIPTION
1	1	SIP-00001593	A	BASE PLATE UNDERCARRIAGE ASSEMBLY, MID
2	1	SIP-00001475	-	BRUSH HOOD ASSEMBLY, MID
3	1	SIP-00001262	-	24 VDC VACUUM MOTOR
4	1	SIP-00001264	-	24 VDC BRUSH MOTOR
5	1	SIP-00001721	-	VACUUM MOUNT, MID
6	1	SIP-00001266	-	4 RIB V BELT, MID
7	1	SIP-00001727	A	MOTOR PULLEY, MID
8	1	SIP-00001105	-	1/4-20 x .5" CUP-POINT SET SCREW
9	1	SIP-00001737	-	VACCUM MOUNT SEAL
10	1	SIP-00001734	-	VACUUM MOUNT GASKET
11	1	SIP-00001711	A	PULLEY COVER, MID
12	1	SIP-00001724	-	PLASTIC STIFFENER BRACKET, MID
13	1	SIP-00001268	-	VACUUM HOSE, MID
14	1	SIP-00001270	-	#20 HOSE CLAMP, 1/2" WIDE
15	5	SIP-00001252	-	1/4-20 X .5" FLATHEAD
16	3	SIP-00001153	-	1/4-20 XX .75" FLATHEAD SOC
17	1	SIP-00001244	-	1/4-20 x 4" THREADED ROD
18	2	SIP-00001246	-	1/4-20 x 4.5" THREADED ROD
19	5	SIP-00001250	-	1/4-20 NYLOCK NUT
20	3	SIP-00001201	-	10-24 X .375" PHIL TRUSS SCREW
21	9	SIP-00001248	-	.25 ID X .5 OD X 1" L SPACER
22	2	SIP-00001254	-	10-32 X 5/8 FLATHEAD SCREW
23	1	SIP-00001260	-	1/4-20 X 1.5" BLACK THUMB SCREW
24	1	SIP-00001258	-	1/4-20 X 2.5" BLACK THUMB SCREW
25	2	SIP-00001256	-	.25 ID X .5 OD X .75 L SPACER
26	2	SIP-00001113	-	1/4" SPLIT LOCK WASHER

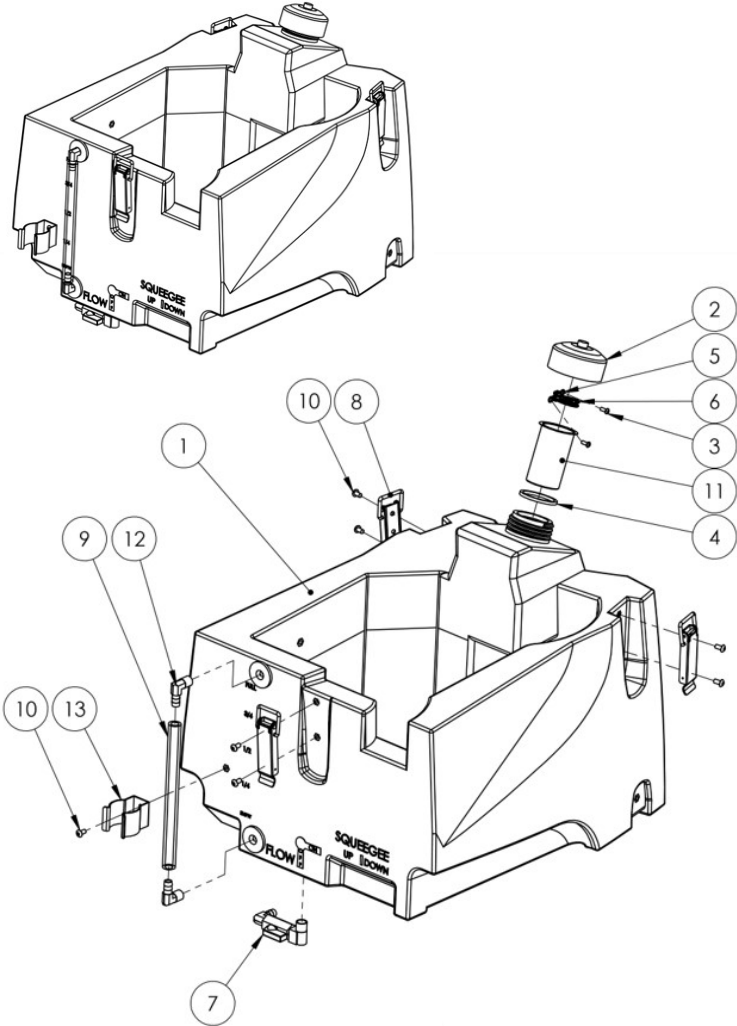
BASE PLATE BRUSH HOOD VAC ASSEMBLY, MID



BOTTOM TANK ASSEMBLY, MID

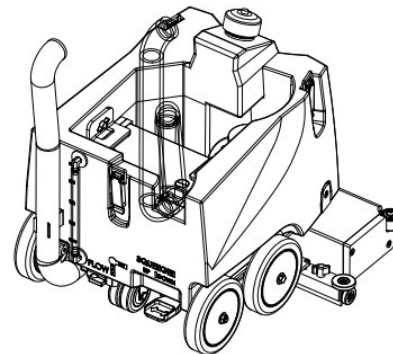
ITEM NO.	QTY.	SIP NUMBER	Rev.	DESCRIPTION
1	1	SIP-00001954	-	BOTTOM TANK WITH INSERTS, MID
2	1	SIP-00001298	-	SMALL FILL CAP
3	2	SIP-00001276	-	#6-32 X 3/8 PAN HEAD SCREW
4	1	SIP-00001274	-	1.887 OD X 1.609 ID X 1/8 THK SQR O-RING
5	2	SIP-00001303	-	#10 AD COUPLING FOR BALL CHAIN
6	1	SIP-00001301	-	7" LONG - #10 BALL CHAIN
7	1	SIP-00001979	-	SHUT-OFF VALVE ASSEMBLY
8	3	SIP-00001290	-	TOGGLE LATCH, MID/MAX
9	1	SIP-00001294	-	FILL GAUGE TUBE 3/8 x 5/8 x 7.75
10	7	SIP-00001296	-	10-24 x 3/8" BHCS BLACK OXIDE
11	1	SIP-00001305	-	FILTER SCREEN (FILLING)
12	2	SIP-00001286	-	3/8 HOSE BARB X 1/4 MIP ELBOW
13	1	SIP-00001177	-	1.5" VACUUM HOSE GRIPPER CLIP, MINI/MID/MAX

BOTTOM TANK ASSEMBLY, MID

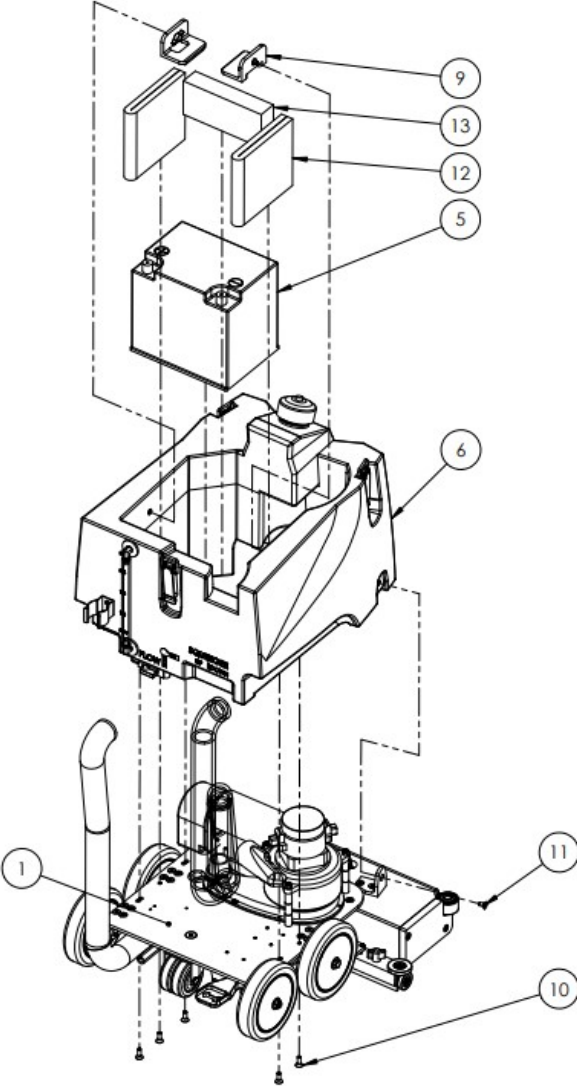


FULL BASE ASSEMBLY, MID

ITEM NO.	QTY.	SIP NUMBER	Rev.	DESCRIPTION
1	1	SIP-00001739	-	BASE PLATE/BRUSH HOOD/VAC ASSEMBLY
2	1	SIP-00002086	A	SQUEEGEE BAR ASSEMBLY, MID
3	1	SIP-00002136	-	SOLENOID ASSEMBLY, MID/MAX
4	1	SIP-00002147	-	FILTER ASSEMBLY, MID/MAX
5	1	SIP-00001313	-	24 VDC LIFEPO4 BATTERY, w/BMS, MID
6	1	SIP-00001994	-	BOTTOM TANK ASSEMBLY, MID
7	1	SIP-00001315		SQUEEGEE HOSE, MID
8	1	SIP-00001317	-	CLEVIS PIN/COTTER PIN
9	2	SIP-00002165	-	BATTERY BRACKET ASSEMBLY, MID
10	5	SIP-00001153	-	1/4-20 XX .75" FLATHEAD SOC
11	1	SIP-00001252	-	1/4-20 X .5" FLATHEAD
12	2	SIP-00002339	-	BATTERY SIDE FOAM INSERT
13	1	SIP-00002341	-	BATTERY FOAM PAD
14	1	SIP-00001270	-	#20 HOSE CLAMP, 1/2" WIDE
15	2	SIP-00001145	-	10-24 x .25" PHILLPAN (PHILLIPS)



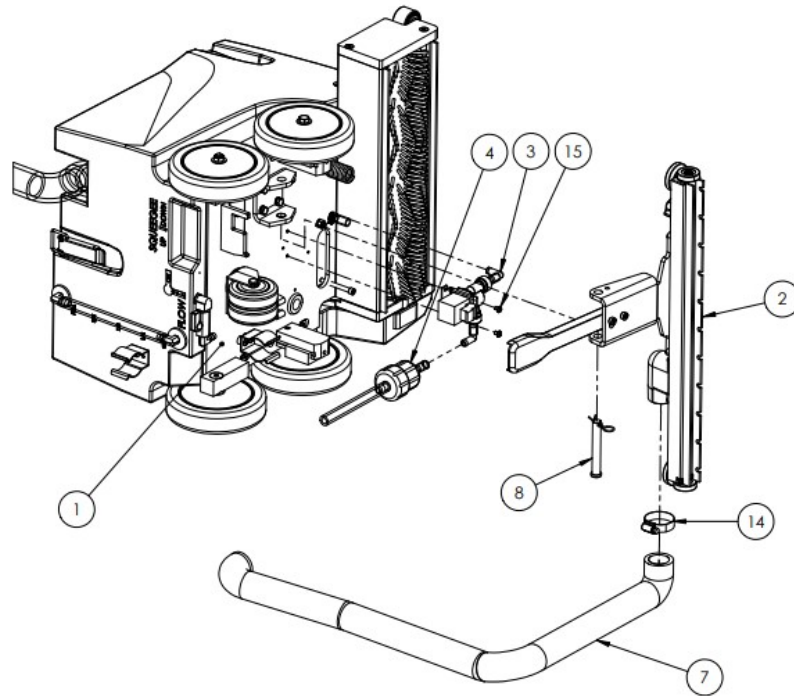
FULL BASE ASSEMBLY, MID



FULL BASE ASSEMBLY, MID CONT

ITEM NO.	QTY.	SIP NUMBER	Rev.	DESCRIPTION
1	1	SIP-00001739	-	BASE PLATE/BRUSH HOOD/VAC ASSEMBLY
2	1	SIP-00002086	A	SQUEEGEE BAR ASSEMBLY, MID
3	1	SIP-00002136	-	SOLENOID ASSEMBLY, MID/MAX
4	1	SIP-00002147	-	FILTER ASSEMBLY, MID/MAX
5	1	SIP-00001313	-	24 VDC LIFEPO4 BATTERY, w/BMS, MID
6	1	SIP-00001994	-	BOTTOM TANK ASSEMBLY, MID
7	1	SIP-00001315		SQUEEGEE HOSE, MID
8	1	SIP-00001317	-	CLEVIS PIN/COTTER PIN
9	2	SIP-00002165	-	BATTERY BRACKET ASSEMBLY, MID
10	5	SIP-00001153	-	1/4-20 XX .75" FLATHEAD SOC
11	1	SIP-00001252	-	1/4-20 X .5" FLATHEAD
12	2	SIP-00002339	-	BATTERY SIDE FOAM INSERT
13	1	SIP-00002341	-	BATTERY FOAM PAD
14	1	SIP-00001270	-	#20 HOSE CLAMP, 1/2" WIDE
15	2	SIP-00001145	-	10-24 x .25" PHILLPAN (PHILLIPS)

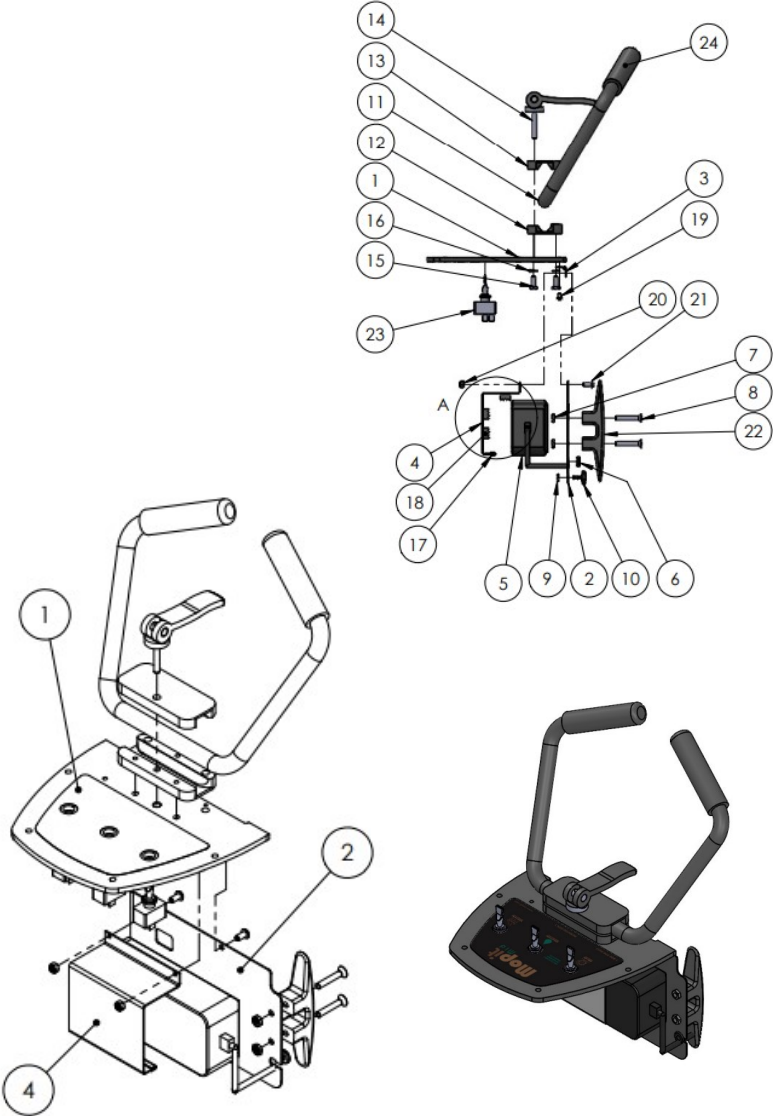
FULL BASE ASSEMBLY, MID CONT



DASH PLATE ASSEMBLY, MID

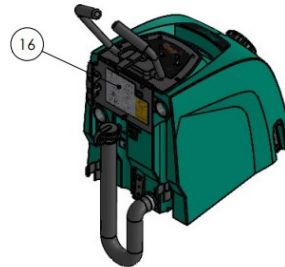
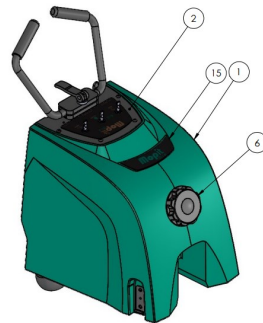
ITEM NO.	QTY.	SIP NUMBER	Rev.	DESCRIPTION
1	1	SIP-00003620	A	DASHPLATE, MID
2	1	SIP-00003662	-	CHARGER PLATE, MID
3	1	SIP-00003658	-	CHARGER PLATE HINGE, MID
4	1	SIP-00003656	B	CHARGER BRACKET, MID/MAX
5	1	SIP-00003666	-	BATTERY CHARGER
6	1	SIP-00003660	-	RUBBER GROMMET, CHARGE PLATE
7	2	SIP-00003653	-	1/4-20 JAM NUT, 5/32 THK
8	2	SIP-00003643	-	1/4-20 x 1.5 FH SCREW
9	1	SIP-00003641	-	# 10 SIZE, .0625 THICK WHITE RETAINING RING
10	1	SIP-00003638	-	10-24 x .5" THUMB SCREW
11	1	SIP-00003629	-	HANDLEBARS, MID
12	1	SIP-00003624	A	BOTTOM HANDLEBAR CLAMP, MID/MAX
13	1	SIP-00003626	A	TOP HANDLEBAR CLAMP, MID/MAX
14	1	SIP-00003631	-	CAM LEVER HANDLE ADJUST
15	3	SIP-00001230	-	1/4-20 X 5/8 HEX CAP SCREW
16	3	SIP-00001113	-	1/4" SPLIT LOCK WASHER
17	1	SIP-00003670	-	RUBBER GRIP EDGE FOR CHARGE PLATE
18	3	SIP-00003672	-	WEATHER STRIPPING FOR CHARGER
19	2	SIP-00001145	-	10-24 x .25" PHILLPAN (PHILLIPS)
20	2	SIP-00003674	-	10-24 NYLON LOCK NUT
21	2	SIP-00001109	-	1/4-20 X .5" BHCS
22	1	SIP-00003676	-	CORD WRAP
23	3	SIP-00003632	-	50 AMP SWITCH
24	2	SIP-00003712	-	3/4" BLACK HANDLE GRIP
25	1	SIP-00003716	-	MOPIT MID DASH LOGO LABEL

DASH PLATE ASSEMBLY, MID

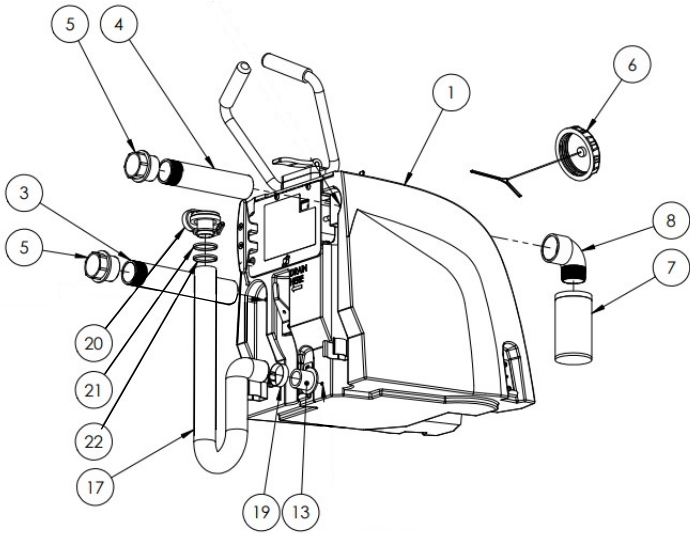
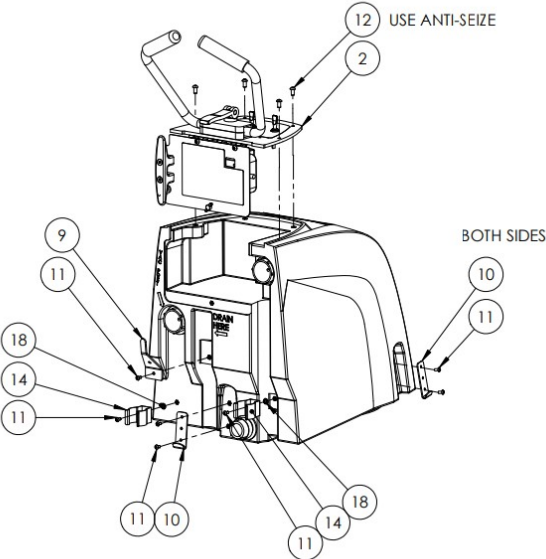


FULL UPPER ASSEMBLY, MID

ITEM NO.	QTY.	SIP NUMBER	Rev.	DESCRIPTION
1	1	SIP-00003680	-	TOP TANK WITH INSERTS, MID
2	1	SIP-00003668	-	DASH PLATE ASSEMBLY, MID
3	1	SIP-00003688	-	1 1/2 ABS PIPE, 10 INCHES
4	1	SIP-00003685	A	1 1/2 ABS PIPE, 8 INCHES
5	2	SIP-00003690	-	BLACK SPIN-ON SWF 1 1/2" FTP RAISED DBL ENDED THRAD
6	1	SIP-00003692	-	LARGE CAP (3.5") WITH TEATHER
7	1	SIP-00003694	-	SNORKLE BALL BASKET, FLOAT SHUT-OFF
8	1	SIP-00003696	-	1 1/2" 90° STEET ELBOW D2466, (MIPT X SOCKET SCH 40)
9	1	SIP-00003699	-	DRAIN HOSE HOOK
10	3	SIP-00003703	-	TOGGLE LATCH UPPER HOOK, MID/MAX
11	9	SIP-00001296	-	10-24 x 3/8" BHCS BLACK OXIDE
12	4	SIP-00003705	-	1/4-20 X 1/2" BHCS BLACK
13	1	SIP-00003708	-	DRAIN HOSE SPIN ON, 1 1/2 OD X 1 1/8 X 1 3/16
14	2	SIP-00001177	-	1.5" VACUUM HOSE GRIPPER CLIP, MINI/MID/MAX
15	1	SIP-00003718	-	MOPIT MID FRONT LABEL
16	1	SIP-00003720	-	CHARGER PLATE LABELS
17	1	SIP-00003722	-	DRAIN HOSE, MID
18	2	SIP-00003724	-	1/4" INTERNAL TOOTH LOCK WASHER
19	1	SIP-00001270	-	#20 HOSE CLAMP, 1/2" WIDE
20	1	SIP-00003726	-	DRAIN HOLE CAP
21	1	SIP-00003729	-	8" BLACK NYLON CABLE TIE
22	1	SIP-00003728	-	8" STAINLESS STEEL CABLE TIE

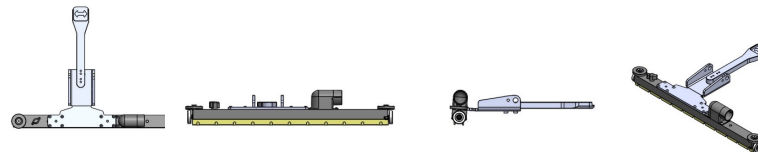


FULL UPPER ASSEMBLY, MID

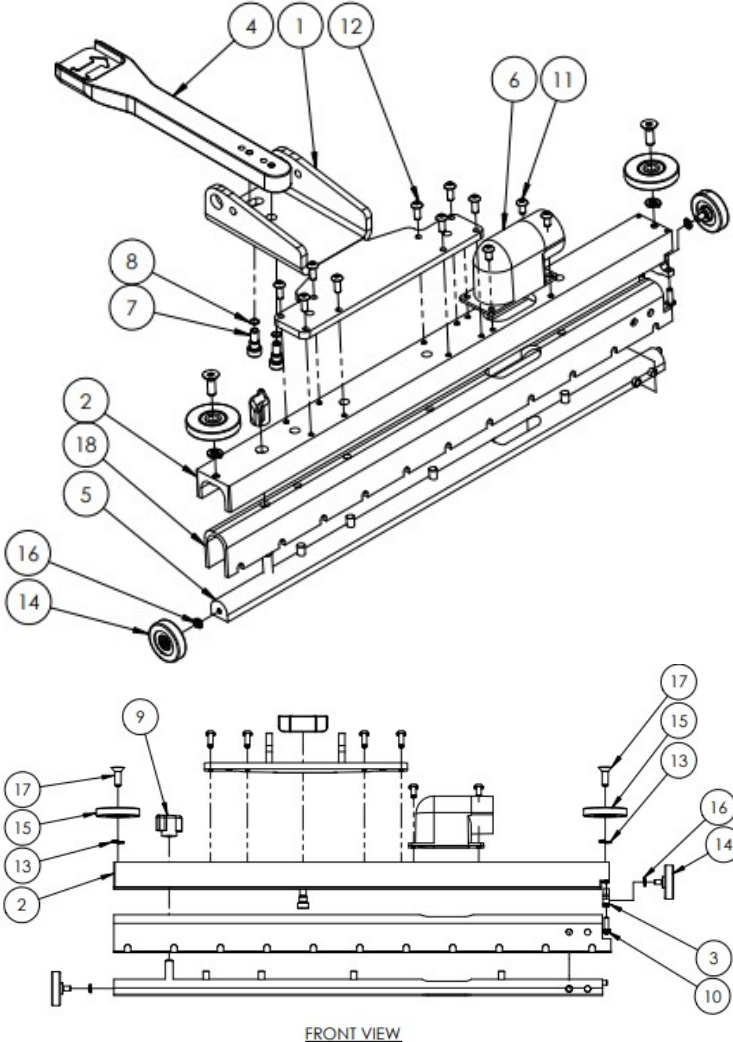


SQUEEGEE ASSEMBLY, MID

ITEM NO.	QTY.	SIP NUMBER	Rev.	DESCRIPTION
1	1	SIP-00002057	A	LOWER SQUEEGEE BRACKET, MID
2	1	SIP-00002065	A	SQUEEGEE BAR, MINI/MID/MAX
3	1	SIP-00002074	A	SQUEEGEE BAR END PIECE, MID
4	1	SIP-00002071	A	SQUEEGEE LEVER, MID
5	1	SIP-00002043	-	SQUEEGEE BAR INSERT ASSEMBLY, MID
6	1	SIP-00002077	A	SQUEEGEE HORN, MOLDED, MID/MAX
7	2	SIP-00001161	-	1/4-20 SHOULDER SCREW
8	2	SIP-00001159	-	5/16 SHOULDER SCREW SHIM WASHER
9	1	SIP-00001157	-	5/16-18 BLACK WING NUT
10	2	SIP-00001151	-	8-32 X 1/2" BHCS BLACK OXIDE
11	4	SIP-00001163	-	10-24 3/8" BHCS
12	8	SIP-00001165	-	10-24 X .5" BHCS
13	2	SIP-00001113	-	1/4" SPLIT LOCK WASHER
14	2	SIP-00001173	-	1.37 X .35 WHITE SQUEEGEE WHEEL, MINI/MID/MAX
15	2	SIP-00001175	-	1.75" BLACK SQUEEGEE DEFLECTOR WHEEL, MINI/MID/MAX
16	2	SIP-00001155	-	#10 SPLIT LOCK WASHER
17	2	SIP-00001153	-	1/4-20 XX .75" FLATHEAD SOC
18	1	SIP-00002082	A	1/8" YELLOW SQUEEGEE, MID



SQUEEGEE ASSEMBLY, MID





Spectrum Industrial Products LLC
868 West 400 North
Logan, Utah 84321
Phone: 1-800-290-2833
Email: mopit@mopit.com
Web: www.mopit.com