



Mopit 4

Operator's / Service Manual



FOR PARTS AND SERVICE 1-800-290-2833



To view Mopit 4 instructional videos scan this qr code with your smart phone. You can also find Mopit 4 instructional videos on the Mopit channel at www.youtube.com

Table of Contents

BASIC OPERATION.....	4-8
Mopit safety information.....	4
Filling the fresh water tank.....	4
Using Mopit cleaning solution.....	4
Water level gauge.....	5
Mopit switches.....	5
Draining the dirty water.....	6
Water valve.....	6
Transporting the Mopit.....	6
Squeegee lift pedal.....	7
Charging the Mopit.....	7
MAINTENANCE / MOPIT SERVICE	
Draining the fresh water tank.....	8
Cleaning the water filter.....	8
Squeegee replacement.....	9
Brush pressure adjustment.....	10
Belt replacement and tensioning.....	11
Brush replacement.....	12
Cleaning the recovery tank.....	13
Battery pack replacement.....	14-15
Brush motor replacement.....	16
Battery charger replacement.....	17
Vacuum motor replacement.....	17
Water solenoid replacement.....	18
Water drip tube replacement.....	18
Drain hose replacement.....	19
Idle bearing replacement.....	19
Drive bearing replacement.....	19
TROUBLESHOOTING	
Not getting any water.....	20
Batteries not charging.....	20
Mopit is leaving black marks.....	20
Mopit smells when I use it.....	20
Mopit shocks me when in use.....	20
Mopit leaks when not in use.....	21
Mopit not cleaning well.....	21
Mopit is not picking up water.....	22
Mopit parts diagram.....	23-28
Mopit maintenance chart.....	29
Mopit QR codes for videos.....	30
SPECIFICATIONS	
Mopit specifications.....	31



Scan this QR code with your smart phone to watch the Mopit 4 training video. You can view all of our Mopit movies on the “Mopit Channel” at www.youtube.com.

BASIC OPERATION

WARNING!!!!

- Do Not Use or Pick Up Flammable Materials with the Mopit.
- Do Not Use Mopit Near Flammable Liquids or Vapors.
- Disconnect Battery Cables and Charger Cord Before Servicing.
- Do Not Use or Store Outdoors.

Before using the Mopit 3.0 you need to fill it with water and cleaning solution.

Filling The Fresh Water Tank

This is where you fill the Mopit with water. It is best to add the cleaning solution after you have filled the tank with water. It is **ok** to let water stay in the fresh water tank for an extended period of time.

Using Mopit Cleaning Solution

Mopit cleaning solution is very concentrated. It only takes one ounce of solution per Mopit fill for normal cleaning. For greasy floors you can use 2-3 ounces of solution per Mopit fill.

The fresh water tank cap is a one ounce measuring cup, you can also order a one ounce per pump dispenser by calling us at 1-800-290-2833



BASIC OPERATION

Water Level Gauge

This is the water level gauge. Even though the gauge shows 4 gallons the actual fresh water capacity is 5 gallons.



The Mopit Has 3 Switches

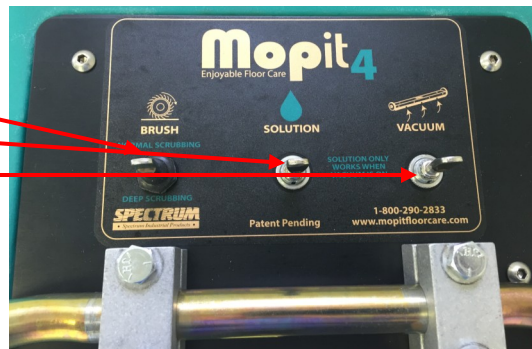
The Brush Switch

The Solution Switch

The Vacuum Switch

Simply turn on all three switches and walk.

The water switch will work only when both the vacuum and water switches are on.



The Mopit 4 has brush assist, so the brush will help to pull the Mopit along the floor, making it effortless to push.

When operating the Mopit you may walk at a normal pace.

If there is a really dirty area, cleaning performance is increased pushing the Mopit slower.

BASIC OPERATION

Draining The Dirty Water

This is the dirty water drain hose

Simply remove the cap and let the drain hose down onto a floor drain. After draining, be sure to put the cap on tightly. If the cap is not screwed on tightly the machine will lose suction power. It is important

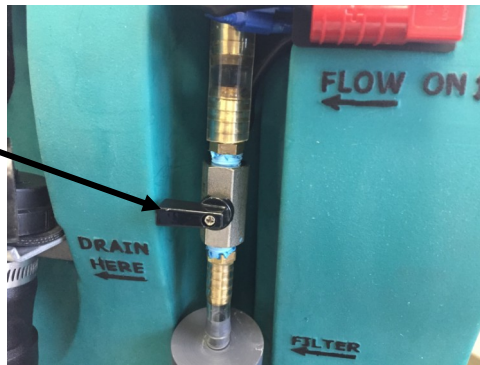


to drain the dirty water tank after each use. If dirty water sits in your dirty water tank for an extended period of time, your machine will start to stink.

Water Valve

The water control valve controls how much water goes onto the floor.

The water valve is full **on** when the black valve handle is horizontal, and full **off** when the handle is vertical.



To lower water output, position the valve between full on and full off.

Transporting The Mopit

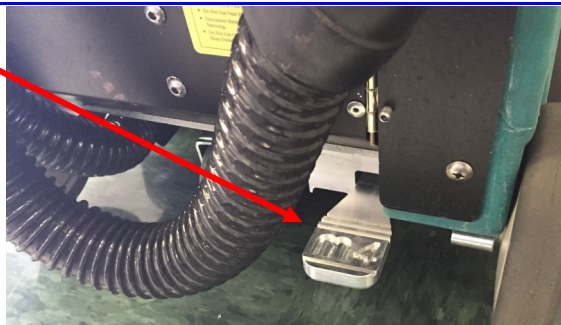
When moving the Mopit, tip it on it's back transport wheels and move it like an upright floor vacuum.



BASIC OPERATION

Squeegee Lift Pedal

The squeegee lift pedal is used for deep cleaning. It allows you to make multiple scrubbing passes without pick-



ing up the water on the floor. This is called double scrubbing. To lift the squeegee, push the pedal down and slide it to the left. To drop the squeegee, push the pedal down and slide it to the right.

Charging The Mopit

The Mopit is battery operated. The charger should be plugged into the Mopit whenever it is not being used. The battery charger can be constantly plugged into the wall. You do **not** need to wait until the batteries are fully charged to use the Mopit. You do **not** need to run the batteries down before you can charge the Mopit. To charge the Mopit plug the Battery charger into the wall. The on-board charger has one indicator light. The light will be amber when it is charging and green when fully charged. The Mopit 4 is also available with an off-board charger option.



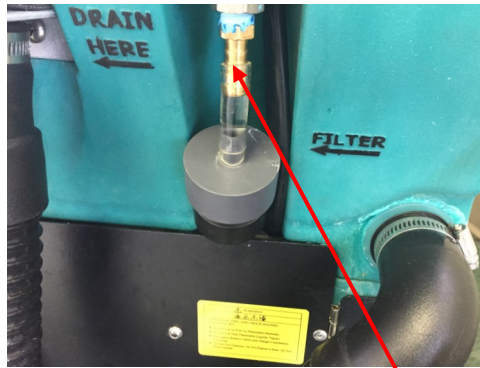


Scan this QR code with your smart phone to watch the Mopit water filter video. You can view all of our Mopit movies on the “Mopit Channel” at www.youtube.com.

MAINTENANCE / SERVICE

Draining The Fresh Water Tank

Occasionally you may need to drain the fresh water tank. The tank will need to be drained before shipping. There is no harm in leaving water in the fresh water tank for an extended period of time. You will want to have the machine outside or positioned over a floor drain when you drain the tank. To drain the tank pull off the tubing from the brass hose fitting, and the water will immediately begin rushing out of the tank.



Cleaning The Water Filter

When you are not getting enough water onto the floor, clean the water filter. Before you clean the fresh water filter make sure that the water valve that is just above the filter, is turned off. Open the battery cover by opening the bolt latch. Pull off the tubing connected to the solenoid. Unscrew the base of the filter housing and remove the filter. Wash the filter out in running water, and reassemble. Don't forget to open the manual water valve.



Scan this QR code with your smart phone to watch the Mopit squeegee replacement video. You can view all of our Mopit movies on the “Mopit Channel” at www.youtube.com.

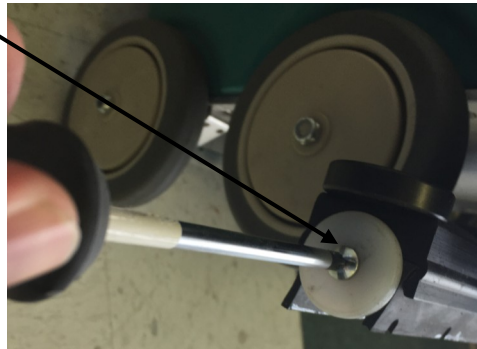


MAINTENANCE / SERVICE

Changing The Squeegee Blade

On average the squeegee blade will need to be changed every 6-8 weeks. If the machine is leaving streaks, and not picking up all of the water, or the Mopit is not cleaning very well, check your squeegee blade for wear. The squeegee blades are reversible, so you can reverse the blade for longer squeegee life. Often you will only need to change the rear blade, as the front blade is a more durable material, and should last much longer than the rear blade. The front and rear squeegee blades have different bead shapes. The rear blade bead is round and the front blade bead is triangle, so you cannot install the blades backwards.

1. Tip the Mopit on its back
2. Remove the squeegee wheel
3. Slide out the old blades
4. Slide in reversed, or replacement blades
5. Replace squeegee wheels if worn





Scan this QR code with your smart phone to watch how to adjust the brush pressure. You can view all of our Mopit movies on the “Mopit Channel” at www.youtube.com.

MAINTENANCE / SERVICE

Adjusting The Brush Pressure

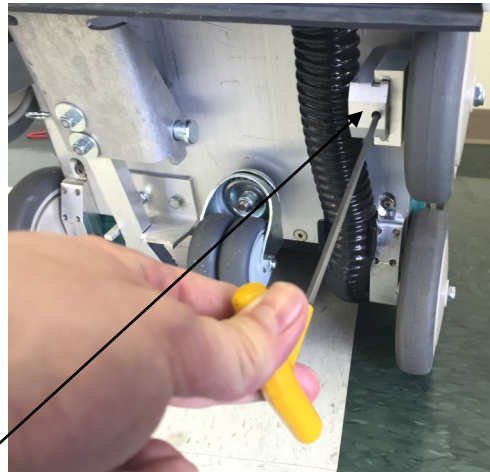
WARNING: Adjusting the brush too low can damage the brush motor and lessen the cleaning performance.

As the scrub brush wears, your brush pressure on the floor will lessen. To compensate for brush wear, adjust the wheels to lower the brush head.

To adjust the brush pressure, tip the machine on its back.

Insert a the included 5/32 Allen wrench into the wheel block windows.

Turn the Allen wrench counterclockwise one complete turn. Adjust both wheels by the same amount.

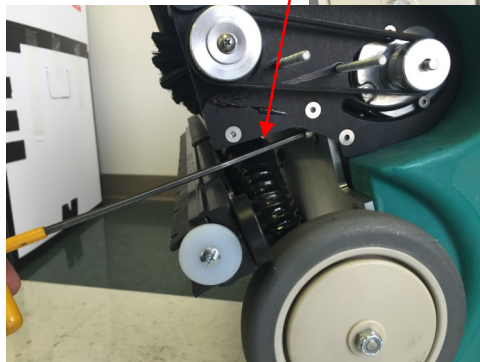
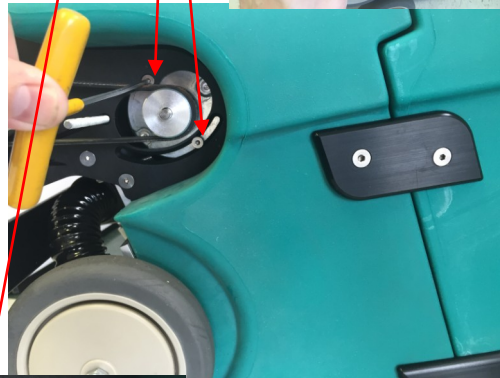
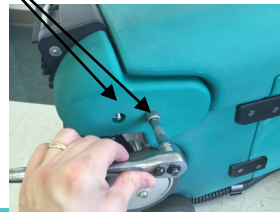


IMPORTANT: You must adjust each wheel by the same amount. Failure to do so will cause un-even brush wear. If you don't know if the wheels have both been evenly adjusted, turn the screw as far as you can clockwise, then begin again to adjust each wheel counterclockwise by the same amount. It is wise, with each full turn of the screw, to stand the machine back up and check the brush deflection from the side of the machine. **We recommend one inch of brush of the brush touching the floor but only a 1/4 inch of the brush height on the floor. Check the brush deflection from the sides of the brush hood while the brush is spinning. Brush deflection means the amount of the brush touching the floor. It is easiest to see using a flashlight.**

MAINTENANCE / SERVICE

Belt Replacement And Tensioning

1. Tip the Mopit on its back
2. Remove belt cover with a 7/16" socket
3. Loosen these two 1/8" Allen screws with a 3/16" Allen wrench
twist the belt tensioning screw counter clockwise
4. Remove old belt
5. Installation is the above steps in reverse
6. Tension belt to 3/8" Deflection





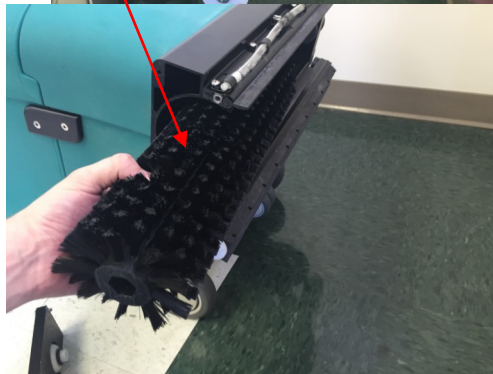
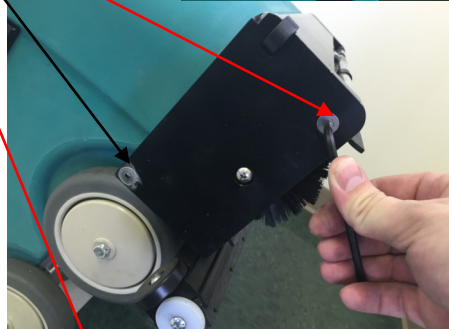
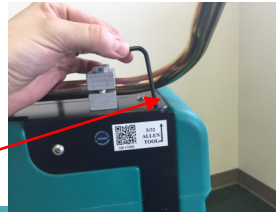
Scan this QR code to watch a short movie on how to change the Mopit brush. All of our Mopit movies can be found on “The Mopit Channel” at www.youtube.com.

MAINTENANCE / SERVICE

Brush Replacement

The Mopit 4.0 scrub brush is very durable and should last several years. As the brush wears it can be lowered by following the instructions on page 10. For replacement follow the steps below.

1. Remove the two 5/32 Allen screws on the right side of the brush hood with the on-board Allen tool
2. Pull off the bearing plate.
3. Pull the old brush out of the hood
4. Installation is the above steps in reverse



Scan this QR code with your smart phone to watch how to clean the recovery tank. You can view all of our Mopit movies on the “Mopit Channel” at www.youtube.com



MAINTENANCE / SERVICE

Cleaning The Recovery Tank

If the recovery tank is not cleaned out regularly the Mopit will begin to stink when used. To clean, remove the clean out access cap by twisting it counterclockwise. Open the drain hose and place it over a floor drain. Use a hose with a sprayer to spray out the recovery tank. Spray the Vacuum ball screen. It may also help to back flush the drain hose.

After spraying out the tank, use a trigger sprayer to spray undiluted bleach all over the inside of the recovery tank. Let the tank sit with the clean out cap and drain hose cap off until the inside of the recovery tank is dry. If your machine still has a foul odor order some Mopit deodorizer from Spectrum.



MAINTENANCE / SERVICE

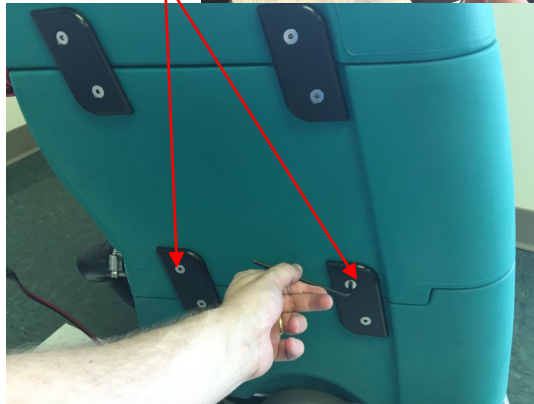
Replacing The Battery Pack

A properly cared for lead acid battery pack should last for 800 charging cycles, which is generally 4-5 years.

IMPORTANT: It is critical that the batteries be replaced with sealed gel cell or AGM type lead acid type batteries. Standard wet lead acid batteries will leak, and may be explosive. If you have questions about replacement batteries call Spectrum at 1-800 290 2833.

To change out the battery pack, you will need a Phillips screw driver and two 7/16" wrenches.

1. Drain the fresh water, and recovery tanks
2. Turn off the manual water valve
3. Open the battery cover door and pull off the tubing that connects to the fresh water filter to the solenoid
4. Close the battery cover
5. Remove these 4 screws. There are two screws on each side



MAINTENANCE / SERVICE

Replacing The Battery Pack *continued*

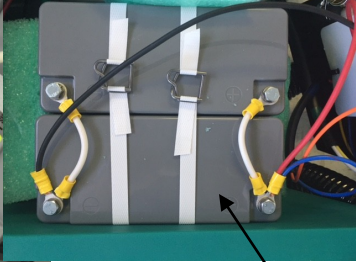
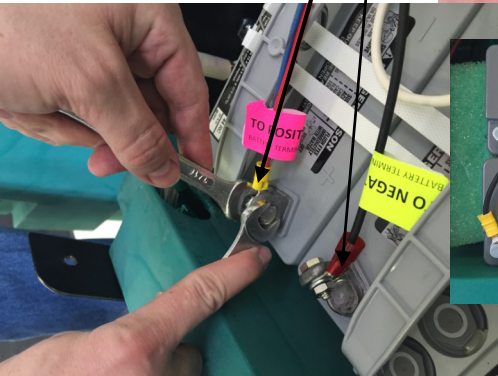
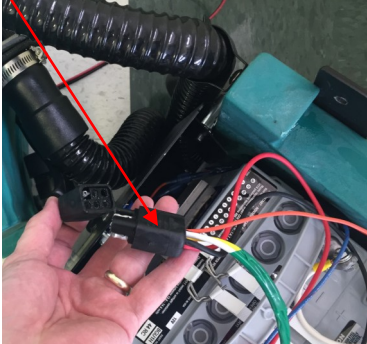
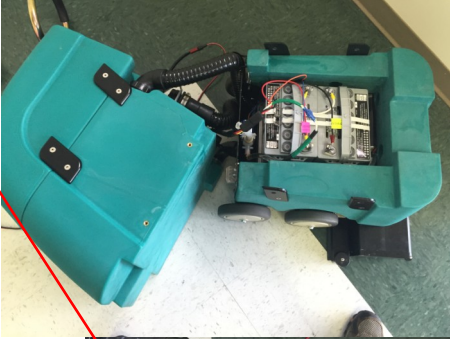
6. Gently tip the top of the Mopit onto its side. You shouldn't have to remove any of the hoses.

7. Disconnect the Black rubber molded connector

8. **As you complete the next step be sure that you don't short circuit the battery by touching any two battery terminals at the same time with your wrenches**

9. Remove the Positive and Negative battery terminal wiring harness. With two 7/16" wrenches. The white harness should not be removed.

10. Replace the batteries, and complete the installation by following the above steps in reverse.



Lithium Batteries

MAINTENANCE / SERVICE

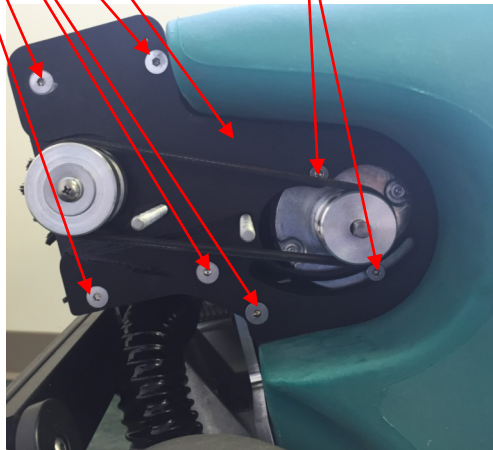
Brush Motor Replacement

On rare occasions the brush motor may need to be replaced. Please call Spectrum at 1-800-290-2833 to troubleshoot and see if your brush motor needs to be replaced.

You **do not** need to remove either of the plastic tanks for motor replacement. It is easiest to replace the brush motor with the Mopit on its back.

You will need a 7/16 socket, 5/32, 1/8, and 3/16 Allen wrenches

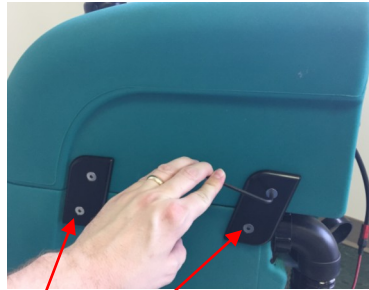
1. Follow the steps on page 11 to remove the belt
2. Remove the two pulleys by using a 1/8 Allen wrench to remove the set screws
3. Remove the five Allen bolts using a 5/32 Allen wrench
4. Pull the brush motor plate out of the machine. There is enough wire on the brush motor so you should be able to set the whole assembly on the ground without disconnecting the wiring
5. Remove the two motor screws using a 1/8 Allen wrench
6. Replacement is the above steps in reverse
7. **HINTS:** Make sure that the motor pulley is touching only the motor shaft, not the motor base. Make sure that you tighten the set screws onto the flats of the shafts.



MAINTENANCE / SERVICE

Battery Charger Replacement

On rare occasions the battery charger may need to be replaced. If the power light does not come on when plugged in, or if the batteries are not accepting a charge, the charger may need to be replaced. Call Spectrum to help you decide if you need a new charger.



Vacuum Motor Replacement

1. Drain your fresh water tank, and disconnect the tubing from the fresh water tank outlet. See draining the fresh water tank on page 8
2. Remove these four 5/32" Allen screws (two on each side)
3. Lift the top tank off of the Mopit and disconnect the two terminals that go to the vacuum motor
4. Set the top tank on the floor
5. Remove the 7/16" nuts that hold the vacuum motor onto the tank
6. To install the new motor follow the above steps in reverse. It doesn't matter which wire you connect the terminals to upon reassembly.



MAINTENANCE / SERVICE

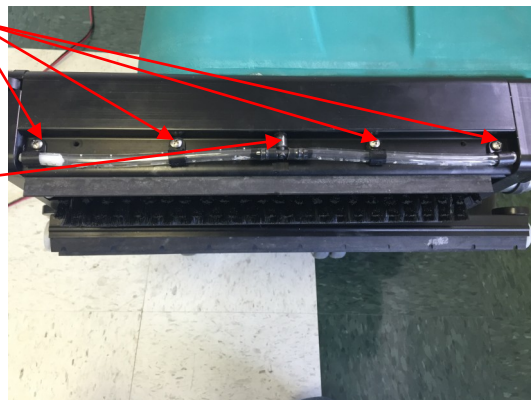
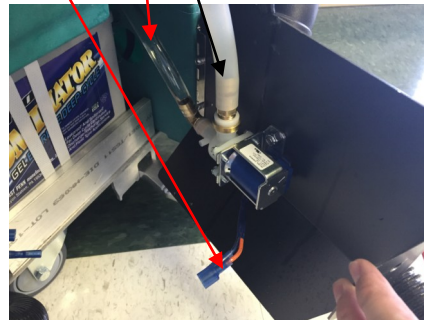
Replacing Water Solenoid

1. Turn off the manual water valve
2. Open the battery cover door
3. Remove the two hoses from the solenoid
4. Disconnect the power terminals from the solenoid
5. Using a 5/32" Allen tool and a 7/16" wrench remove the solenoid from the battery cover door
6. To replace follow the above steps in reverse
7. Don't forget to turn the manual water valve back on

Replacing the Drip Tube

Occasionally you may need to replace your drip tube if it becomes filled with debris or you can't get water consistently out of it.

1. Turn off the manual water valve
2. Remove these 4 screws with a Phillips screw driver
3. Pull the drip tube off of the tubing at the tee
4. Replace by following the above steps in reverse



MAINTENANCE / SERVICE

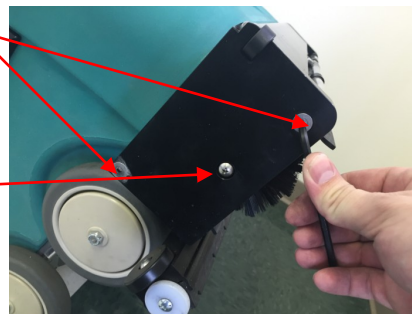
Drain Hose Replacement

1. Drain the dirty water
2. Loosen the hose clamp with a nut driver or flat head screw driver and pull off the hose
3. Replace the hose and tighten the hose clamp



Idle Bearing Replacement

1. Remove the two 5/32 Allen screws from the end plate, and remove end plate.
2. Remove the Phillips screw and pull off the old bearing idle cup.
3. Replace the idle cup / bearing assembly



Drive Bearing Replacement

1. Follow the instructions on pages 11 and 16 for removing the brush and brush motor
2. Pull off the bearing plate, and replace with a new bearing plate assembly from spectrum

TROUBLESHOOTING

Not Getting Any Water

1. Make sure the vacuum and solution switches are both on
2. Check to make sure the manual water valve (pg 6) is turned on.
3. Check to make sure there is water in the fresh water tank.
4. Check to make sure you are getting water past the fresh water filter. Pull off the tubing below the filter and open the manual water valve to make sure water comes out.
5. Check to make sure that the solenoid “clicks when you turn on the vacuum motor and flip the solution switch on and off.
6. Replace the drip tube. See page 18
7. Call Spectrum for additional troubleshooting

Mopit Batteries Not Charging

Call Spectrum for troubleshooting. Also see page 17 on charger replacement.

Mopit Is Leaving Black Marks

The most common cause is not getting water onto the floor. Black marks can also be caused by missing or worn squeegee wheels. See above for how to fix water issues and page 9 for squeegee replacement.

Mopit Machine Smells When I Use It

The Mopit will stink when the recovery tank is not cleaned out regularly. See page 13 for how to clean the tank.

Mopit Machine Is Shocking Me When In Use

Shocking happens when no water is getting to the floor. The static electricity from the spinning brush causes the shocking. To fix this issue follow page 20 on not getting any water.

TROUBLESHOOTING

Mopit Machine Leaks When Not In Use

The most common cause for this is a faulty solenoid. Until we can get you a new solenoid simply turn off the manual water valve (pg 6) when the Mopit is not in use. Also see solenoid replacement (pg 19). The leak may also be coming from a drain hose that has a hole in it.

Mopit Not Cleaning Well

Several factors determine how well the Mopit will clean.

1. Water: use hot water for best cleaning. If no water is getting on the floor or the water delivery is uneven, the cleaning will be poor. See page 20 Not Getting Any Water, to make sure water delivery is working
2. Brush Pressure: see adjusting and checking brush pressure (pg 10)
3. Suction and water recovery: If your machine is not sucking up the water well, see page 22 for help. You can also lift the squeegee to double scrub very dirty areas see page 7 (Squeegee pedal)
4. Battery Charge: If your battery is weak you won't have much suction or scrubbing power. See page 7 on battery charging
5. For more help call Spectrum 1-800-290-2833

TROUBLESHOOTING

My Mopit Is Not Picking Up Water

If the Mopit is not picking up water, there is an issue with the water recovery system. Here are the things to check:

1. Check the squeegee blades for wear and replace if necessary (pg 9)

2. Make sure the squeegee lift is in the down position (pg 7)

3. Make sure the drain hose cap is screwed on tightly

4. Make sure the Squeegee hose is firmly inserted into the hose receiver

5. Check the vacuum tube for obstructions

6. Flush water down the Squeegee hose to clear any clogs

7. Make sure the dirty water tank clean out cap is on (pg 13)

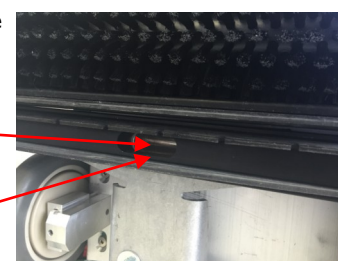
8. Make sure the dirty water tank is empty

9. Check the Vacuum ball screen inside the dirty water tank. Make sure the ball inside the screen is at the bottom, not stuck in the top. If stuck, spray as shown on page 13

10. Turn on the Vacuum switch and feel the squeegee hole for suction

11. Make sure the squeegee horn is clear

12. Make sure both squeegee wheels are on, and are not worn. The wheels should be replaced each time the squeegee is replaced. They are included in each squeegee replacement kit



MOPIT 4 PARTS DIAGRAM

ITEM NO.	PART NUMBER	DESCRIPTION	QTY.
1	4003_05.BRUSH_HOOD	BRUSH HOOD	1
2	4001_05.BRSH_SD_A	FREE SIDE END PLATE	1
3	4002_08.BRSH_SD_B	DRIVE SIDE END PLATE	1
4	4007_05.MTR_PLT	MOTOR MOUNT PLATE	1
5	4100_02.BRSH_CVR_WHL	BRSH CVR WHEEL	1
6	4132.BRUSH	BRUSH	1
7	4020_09.BS_PLT	BASE PLATE	1
8	92210A542	1/4 - 20 X 1	7
9	4167.SCRW	8 - 32 X 1.1/4	1
10	4107_01.SQGE	SQUEEGEE	2
11	92210A540	1/4 - 20 X 3/4	3
12	4134_01.MOTOR	BRUSH MOTOR	1
13	4169.SCRW	SCREW	3
14	4170.SCRW	10 - 32 X 5/8	1
15	4120_06.HX_SFT_LNG	DRIVE SIDE HEX SHAFT (LONG)	1
16	4136_01.DRTY_CLN_BS	DIRTY CLEAN OUT, BASE	1
17	4137.DRTY_CLN_LD	DIRTY CLEAN OUT, LID	1
18	4133_01.FLTR_ASSY	FILTER ASSEMBLY	1
18.1	4103_01.FLTR_BTTM	FILTER BOTTOM (MALE)	1
18.2	4104_01.FLTR_SCRN	FILTER SCREEN	1
18.3	4102_01.FLTR_TP	FILTER TOP (FEMALE)	1
19	4054_09.BTRY_CVR	BATTERY COVER	1
20	4171.SCRW	1/4 - 20 X 5/8 BUTON HEAD	11
21	4126_04.LRG_PLY	LARGE PULLEY	1
22	4138_01.SMLL_PLY	SMALL PULLEY	1
23	4130_03.PULY_CVR	BRUSH PULLEY COVER	1
24	4101_02.DRTY_HS_HLDR	DIRTY HOSE HOLDER	1
25	4142_14.MFT_TNKS_ASSY	MOPIT TANKS ASSEMBLY	1
25.1	4127_22.BTMM_TNK	BOTTOM TANK	1
25.2	4128_22.MDDL_TNK	MIDDLE TANK	1
25.3	4129_22.TOP_TNK	TOP TANK	1
25.4	4139_01.THRDD_INSR	THREADED INSERT, 1/4-20 UNC	2
25.5	4140_01.VCCM_SNRKL_MNT	VACCUUM SNOREL MOUNT	1
25.6	4141_01.VCCM_B	VACCUUM B	1
25.7	4051_01.VCCM_FTR_ASSY	VACCUUM FILTER ASSEMBLY	1
25.7.1	4113_01.VCCM_FTR_SCRN	VACCUUM FILTER SCREEN	1

DESCRIPTION: MOPIT 4 TOP ASSEMBLY		DATE
PART NUMBER: 4118_30.MOPIT_4_TA		2/7/2015
UNLESS OTHERWISE SPECIFIED:	DRAWN BY: WESTFALL	NAME
TOLERANCES ARE IN INCHES:	CHECKED	
FRACTIONALS: 1/64	MFG APPR	
DECIMALS: 1/10	SCALE: 1:20	SHEET 1 OF 6
TWO PLACE DECIMAL: ± 0.010	DO NOT SCALE DRAWING	SIZE A
THREE PLACE DECIMAL: ± 0.005		
MATERIAL: SEE BOM	PART NO.	DWG. NO.
FINISH: SEE BOM	4118	BW100
REF: ASME Y14.5 - 2009		REV
		30

PROPRIETARY AND CONFIDENTIAL
 THE INFORMATION CONTAINED IN THIS DRAWING IS THE PROPERTY OF THE COMPANY AND SHALL NOT BE REPRODUCED OR DISCLOSED IN ANY MANNER WITHOUT THE WRITTEN AUTHORIZATION OF THE COMPANY.

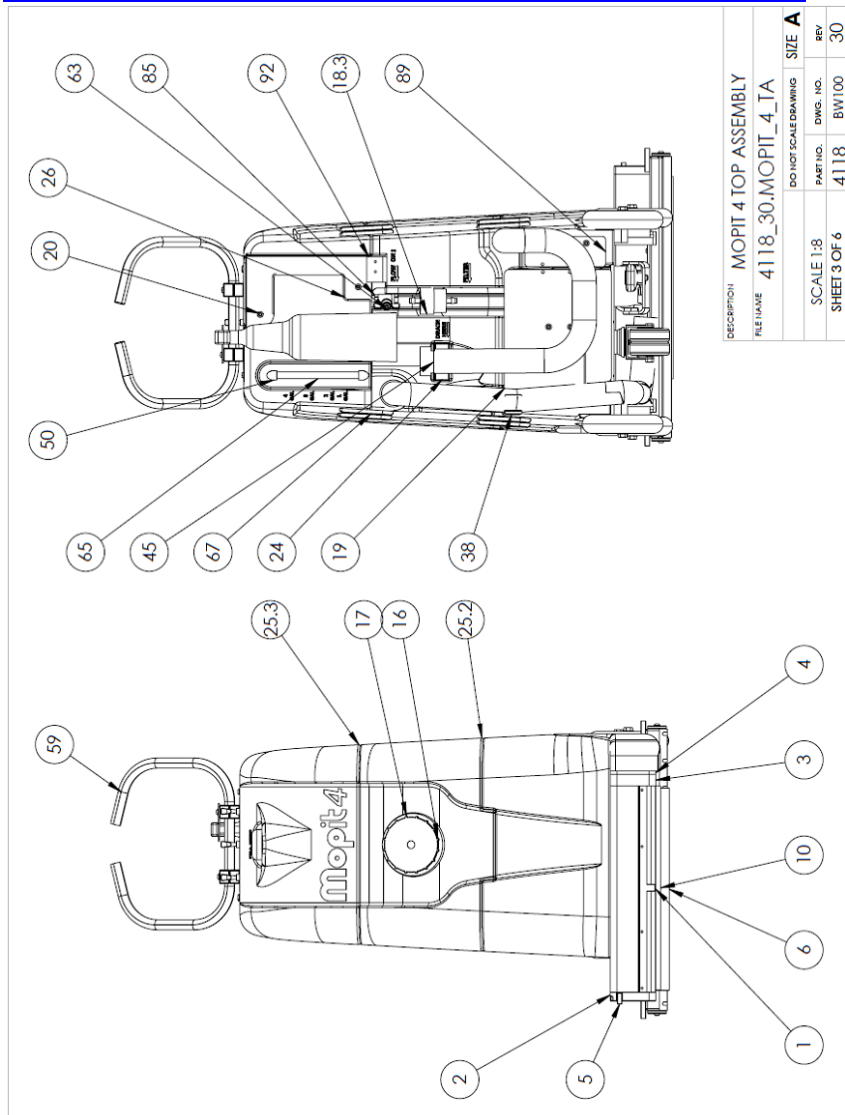
MOPIT 4 PARTS DIAGRAM

ITEM NO.	PART NUMBER	DESCRIPTION	QTY.	ITEM NO.	PART NUMBER	DESCRIPTION	QTY.
25.7.2	4114.VCCM_FLTR_TP	VACUUM FILTER TOP	1	61	4199.01.SPRY_BTLE	SPRAY BOTTLE	1
26	4115.04.WR_CVR	WIRE COVER	1	62	4161.01.SQGG_TP_WHL	SQUEEGEE TIP WHEEL	2
27	4050.05.SWITCH_PLT	DASH PLATE	1	63	4181.VLV	VALVE	1
28	4122.01.VCCM_HS	VACUUM HOSE	1	64	4158.01.ID.ACD_BTTRY	LEAD ACID BATTERIES	2
29	4172.SCRW	1/4 - 20 X 3/4	40	65	4163.01.FLL_GAGE_TB	FILL GAGE TUBE	1
30	4143.01_WHL	WHEEL	4	66	4164.01.PLV_TP_WHL	PULLEY TOP WHEEL	2
31	4027.02.TRNSPRT_WHL_MNT	TRANSPORT WHEEL MOUNT	2	67	4116.02.CNNCTN_RGHT	CONNECTION PLATE, RIGHT SIDE	4
32	4144.01.CSTR	CASTOR	1	68	4117.03.CNNCTN_LFT	CONNECTION PLATE, LEFT SIDE	4
33	4173.NUT	3/8 - 16 NUT	1	69	4165.01.CSTR_SPCR	CASTOR SPACER	1
34	4174.SCRW	SCREW 3/8 - 16 X 1 3/8	1	70	4182.WSHR	WASHER 3/8 X 0.05	4
35	4111.03.STIFNG_BM	STIFFENING BEAM	1	71	4183.SCRW	BOLT 3/8 - 16 X 2	4
36	4145.01.HNDL_CLMP	HANDLE CLAMP	4	72	4184.01.SQGG_SPRNG	SQUEEGEE BAR SPRING	1
37	4176.SCRW	SCREW 1/4 - 20 X 1 3/4 BUTION HEAD	4	73	4185.NUT	NUT 1/4 - 20	4
38	4146.01.HS_CTCH	HOSE CATCH	2	74	4186.SCRW	SCREW 1/4 - 20 X 1/2 BUTION HEAD	12
39	4147.01.SWITCH	SWITCH	3	75	4187.SCRW	SCREW 10-24 X 1/2 BUTION HEAD	12
40	4148.02.SQGG_BRKT_UPPR	UPPER SQUEEGEE BRACKET	1	76	4188.SCRW	SCREW 10-24 X 1 BUTION HEAD	2
41	4044.02.SQGG_BRKT_LWR	LOWER SQUEEGEE BRACKET	1	77	4189.SCRW	SCRW 1/4 - 20 X 1 1/4	1
42	4041.05.SQGG_BR	SQUEEGEE BAR	1	78	4190.SCRW	SCREW 10-24 X 5/16 BUTION HEAD	1
43	4149.01.RELAY	RELAY	2	79	4122.01.6203_BRNG	6203 BEARING	1
44	4190.01.HS_RCVR	VACUUM HOSE RECIEVER	1	81	4196.01.SL_6203	BEARING SEAL 6203	1
45	5151.01.DRN_HS	DRAIN HOSE	1	82	4124.02.FR_SD_BRSH_MNT	FREE SIDE BRUSH MOUNT	1
46	4105.05.SQGG_LVR	SQUEEGEE PEDAL	1	83	4197.01.BRNG_NSK_6800	NSK 6800 BEARING	1
47	4110.03.SQGG_STP	SQUEEGEE STOP	1	84	4123.03.FR_SD_SHFT	FREE SIDE SHAFT	1
48	4153.01.VCCM_SNKL_TB	VACUUM SNORKEL TUBE	1	85	4194.PIPE	REDUCING PIPE BUSHING	1
49	4178.SCRW	SCREW BUTION HEAD	2	86	4192.WSHR	LARGE WASHER, 10 HOLE X 0.05	1
50	4154.01.FLL_GAGE_ELBW	FILL GAGE ELBOW	2	87	4195.SCRW	SCREW 10-24 X 1/2 LOW PROFILE	2
51	4032.03.FLL_SCRN	FILL SCREEN	1	88	4170.LBL	Label	1
52	4155.WHL_ADJSTR_MNT_B	WHEEL ADJUSTOR MOUNT MOD	2	89	4171.02.CHRCR_PLI_MNT	CHARGER PLATE HINGE MOUNT	1
53	4156.01.WHL_ADJSTR_SLID	WHEEL ADJUSTOR SLIDE	2	90	4172.02.BTTRY_STP	BATTERY STOP	1
54	4108.02.SQGG_BR	SQUEEGEE FOR BAR, REAR	1	91	4198.01.CAP	CAP	1
55	4139.01.THRRD_INSRT	THREADED INSERT 1/4-20 UNC	3	92	4197.PLUG	Plug	1
56	4157.01.SLND	SOLENOID	1	93	4196_THRD_RD	THREADED ROD 1/4-20 X 2.75	2
57	4179.SPCR	SPACER	3				
58	4109.02.SQGG_FRNT	SQUEEGEE FOR BAR, FRONT	1				
59	4106.02.HNDL_BR	HANDLE BAR	1				
60	4119.02.BTTL_HLDR	BOTTLE HOLDER	1				

DESCRIPTION	MOPIT 4 TOP ASSEMBLY	
FILENAME	4118_30.MOPIT_4_TA	
DO NOT SCALE DRAWING	SIZE A	
PART NO.	DWG. NO.	REV
4118	BW100	30
SHEET 2 OF 6		

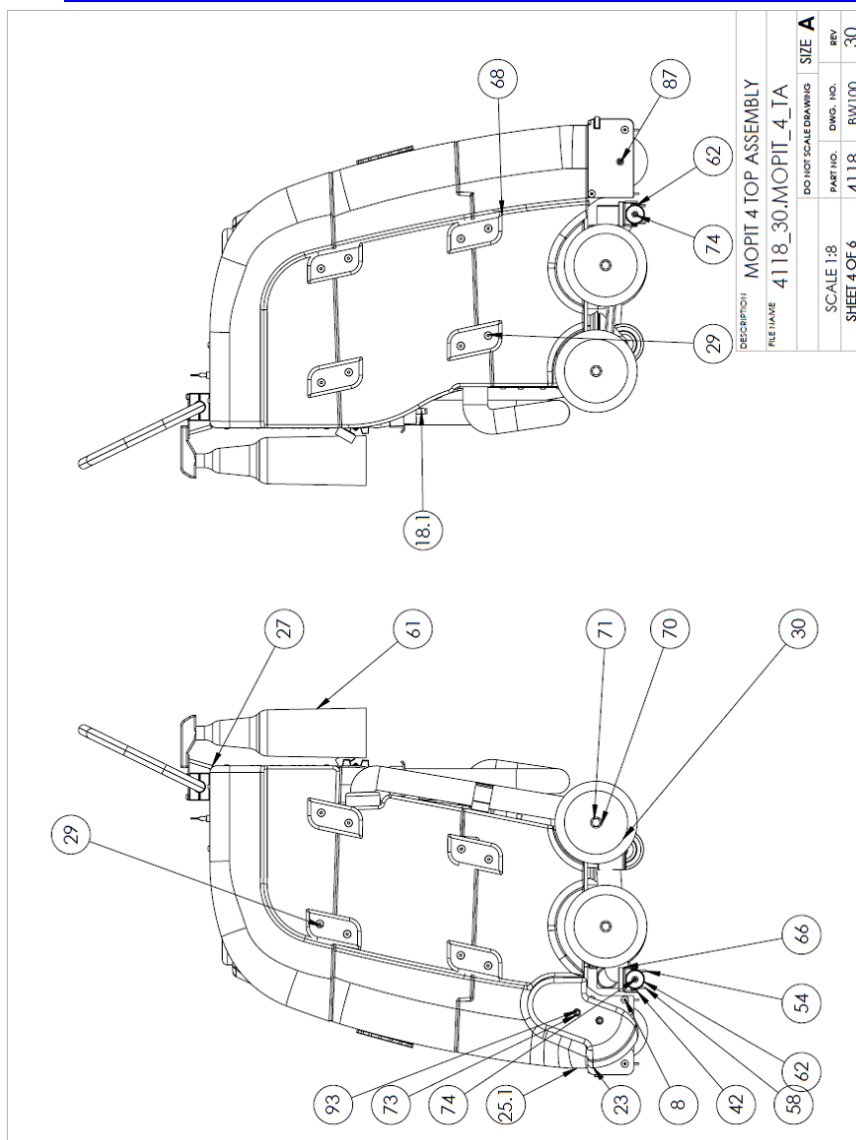


MOPIT 4 PARTS DIAGRAM

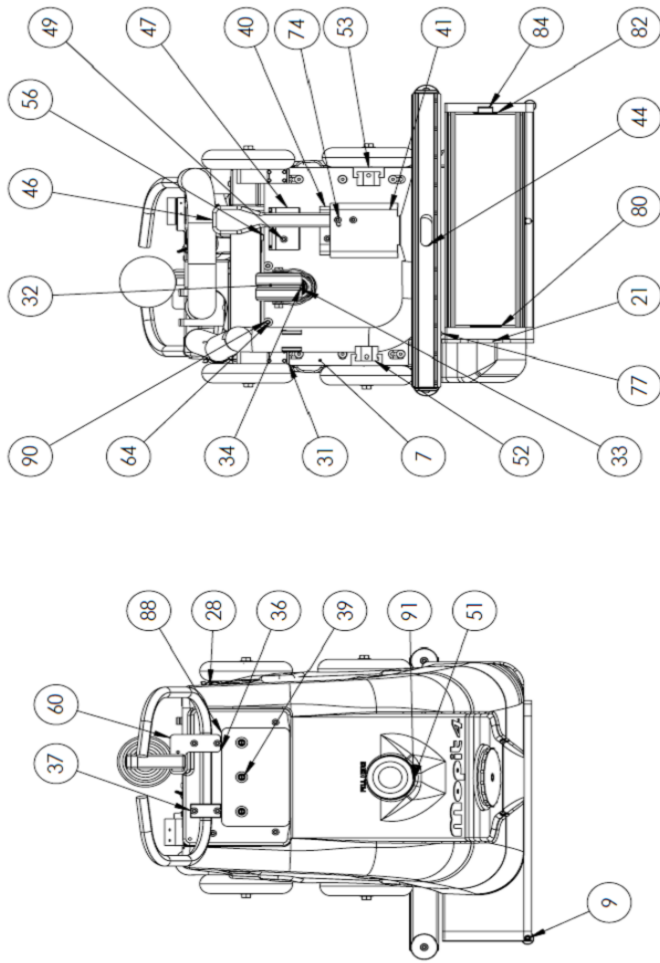


DESCRIPTION	MOPIT 4 TOP ASSEMBLY	DO NOT SCALE DRAWING	SIZE	A
FILE NAME	4118_30.MOPIT_4_TA	PART NO.	DWG. NO.	REV.
SCALE	1:8	4118	BW100	30
SHEET	3 OF 6			

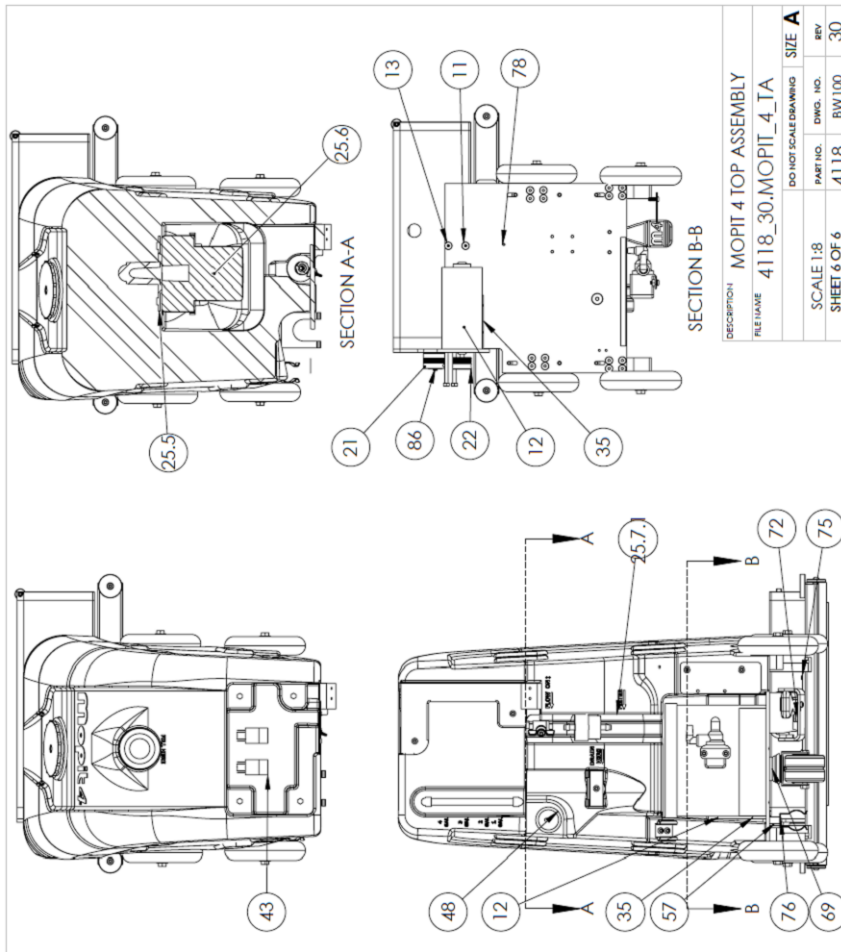
MOPIT 4 PARTS DIAGRAM



MOPIT 4 PARTS DIAGRAM



MOPIT 4 PARTS DIAGRAM



This chart can be printed from our website www.mopitfloorcare.com
Its found under the "support" tab

THE MOPIT CENTER CHART

THE MOPIT CENTER



Mopit Training and Supplies

1. Order Mopit supplies, parts, and service
2. View the Mopit training video
3. View the Mopit operator/service manual
4. View the Mopit chemical SDS sheet

Mopit Maintenance

Daily Maintenance:

5. Drain the dirty water tank after each use _____
6. Plug in the Mopit whenever it is not in use _____

Date:

Weekly Maintenance:

7. Clean out the dirty water tank _____
8. Check the squeegee blade for wear _____

Monthly Maintenance:

9. Clean out the fresh water filter _____
10. Check the brush pressure _____
11. Flush the squeegee hose _____
12. Flush the vacuum tube _____

Use your smart phone or tablet to scan the QR codes.

You can also access everything on this chart by clicking on the "Support" tab on our website.

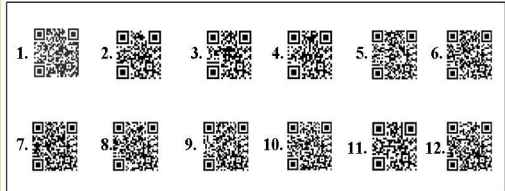
Please feel free to call or email with any Mopit needs or concerns.

1-800-290-2833

spectrum.ind@gmail.com
www.mopitfloorcare.com



Spectrum Industrial Products
868 West 400 North
Logan, UT 84321



MOPIT 4 QR CODES

Mopit 4 Training Video



Squeegee replacement



Charging the Mopit



Brush Pressure



Brush Replacement



Clean dirty water tank



Drain dirty water



Flush vacuum tube



Clean water filter



Operators manual pdf



Flush squeegee hose



Mopit Chemical SDS



Mopit 4 demo video



All of these videos can be found on by going to the Mopit channel on www.youtube.com. Just search Mopit. They can also be found under the “support” tab on our website www.mopitfloorcare.com

MOPIT 4 SPECIFICATIONS

Cleaning Path	15 Inches
Fresh Water Capacity	5 Gallons
Dirty Water Capacity	5.5 Gallons
Solution Flow Rate	.11 to .31 Gallons Per Minute
Scrub Brush Speed	1200 RPM
Brush Size	4 Inches in Diameter
Vacuum Motor	24 Volt 2 Stage, 45.8" Water Lift Sealed
Run Time per Charge	45-60 Minutes
Charger	On-board 24V 5 Amp
Weight	120 Pounds
Length	27 inches w/handle in working position 23.5 inches with handle folded
Height	41 inches w/handle in working position 33 inches with handle folded
Width	22.2 Inches



SPECTRUM

• *Spectrum Industrial Products* •

868 West 400 North
Logan, Utah 84321
Phone: 1-800-290-2833
Email: mopit@mopit.com
Web: www.mopit.com