



Mopit 4.5

Operator's / Service Manual



FOR PARTS AND SERVICE 1-800-290-2833



To view Mopit 4 instructional videos scan this qr code with your smart phone. You can also find Mopit 4 instructional videos on the Mopit channel at www.youtube.com

Table of Contents

BASIC OPERATION.....	4-8
Mopit safety information.....	4
Filling the fresh water tank.....	4
Using Mopit cleaning solution.....	4
Water level gauge.....	5
Mopit switches.....	5
Draining the dirty water.....	6
Water valve.....	6
Transporting the Mopit.....	6
Squeegee lift pedal.....	7
Charging the Mopit.....	7
MAINTENANCE / MOPIT SERVICE	
Draining the fresh water tank.....	8
Cleaning the water filter.....	8
Squeegee replacement.....	9
Brush pressure adjustment.....	10
Belt replacement and tensioning.....	11
Brush replacement.....	12
Cleaning the recovery tank.....	13
Battery pack replacement.....	14-15
Brush motor replacement.....	16
Battery charger replacement.....	17
Vacuum motor replacement.....	17
Water solenoid replacement.....	18
Water drip tube replacement.....	18
Drain hose replacement.....	19
Idle bearing replacement.....	19
Drive bearing replacement.....	19
TROUBLESHOOTING	
Not getting any water.....	20
Batteries not charging.....	20
Mopit is leaving black marks.....	20
Mopit smells when I use it.....	20
Mopit shocks me when in use.....	20
Mopit leaks when not in use.....	21
Mopit not cleaning well.....	21
Mopit is not picking up water.....	22
Mopit parts diagram.....	23-28
Mopit maintenance chart.....	29
Mopit QR codes for videos.....	30
SPECIFICATIONS	
Mopit specifications.....	31



Scan this QR code with your smart phone to watch the Mopit 4 training video. You can view all of our Mopit movies on the “Mopit Channel” at www.youtube.com.

BASIC OPERATION

WARNING!!!!

- Do Not Use or Pick Up Flammable Materials with the Mopit.
- Do Not Use Mopit Near Flammable Liquids or Vapors.
- Disconnect Battery Cables and Charger Cord Before Servicing.
- Do Not Use or Store Outdoors.

Before using the Mopit 3.0 you need to fill it with water and cleaning solution.

Filling The Fresh Water Tank

This is where you fill the Mopit with water. It is best to add the cleaning solution after you have filled the tank with water. It is **ok** to let water stay in the fresh water tank for an extended period of time.

Using Mopit Cleaning Solution

Mopit cleaning solution is very concentrated. It only takes one ounce of solution per Mopit fill for normal cleaning. For greasy floors you can use 2-3 ounces of solution per Mopit fill.

The fresh water tank cap is a one ounce measuring cup, you can also order a one ounce per pump dispenser by calling us at 1-800-290-2833



BASIC OPERATION

Water Level Gauge

This is the water level gauge. Even though the gauge shows 4 gallons the actual fresh water capacity is 5 gallons.



The Mopit Has 3 Switches

The Vacuum Switch

The Solution Switch

The Brush Switch

Simply turn on all three switches and walk.

The water switch will work only when both the brush and

both the brush and water switches are on.



The Mopit 4.5 has brush assist, so the brush will help to pull the Mopit along the floor, making it effortless to push.

When operating the Mopit you may walk at a normal pace. If there is a really dirty area, cleaning performance is increased by pushing the Mopit slower.

BASIC OPERATION

Draining The Dirty Water

This is the dirty water drain hose

Simply remove the cap and let the drain hose down onto a floor drain. After draining, be sure to put the cap on tightly. If the cap is not screwed on tightly the machine will lose suction power. It is important



to drain the dirty water tank after each use. If dirty water sits in your dirty water tank for an extended period of time, your machine will start to stink.

Water Valve

The water control valve controls how much water goes onto the floor.

The water valve is full on when the black valve handle is vertical, and full off when the handle is horizontal. To lower water output, position the valve between full on and full off.



Transporting The Mopit

When moving the Mopit, tip it on it's back transport wheels and move it like an upright floor vacuum.



BASIC OPERATION

Squeegee Lift Pedal

The squeegee lift pedal is used for deep cleaning. It allows you to make multiple scrubbing passes without pick-



ing up the water on the floor. This is called double scrubbing. To lift the squeegee, push the pedal down and slide it to the left. To drop the squeegee, push the pedal down and slide it to the right.

Charging The Mopit

The Mopit is battery operated. The charger should be plugged into the Mopit whenever it is not being used. The battery charger can be constantly plugged into the wall. You do **not** need to wait until the batteries are fully charged to use the Mopit. You do **not** need to run the batteries down before you can charge the Mopit. To charge the Mopit plug the Battery charger into the wall. The on-board charger has one indicator light. The light will be amber when it is charging and green when fully charged. The Mopit 4.5 is also available with an off-board charger option.





Scan this QR code with your smart phone to watch the Mopit water filter video. You can view all of our Mopit movies on the “Mopit Channel” at www.youtube.com.

MAINTENANCE / SERVICE

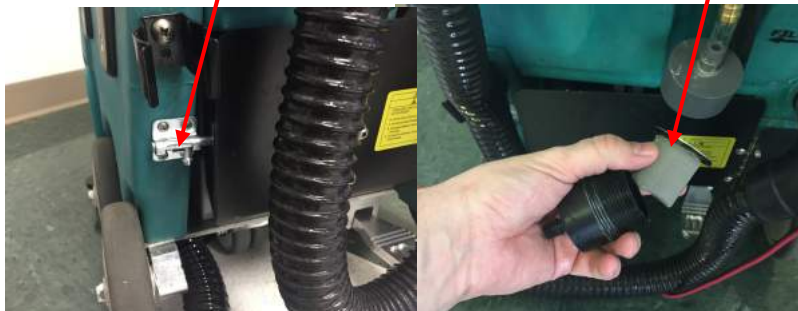
Draining The Fresh Water Tank

Occasionally you may need to drain the fresh water tank. The tank will need to be drained before shipping. There is no harm in leaving water in the fresh water tank for an extended period of time. You will want to have the machine outside or positioned over a floor drain when you drain the tank. To drain the tank pull off the tubing from the brass hose fitting, and the water will immediately begin rushing out of the tank.



Cleaning The Water Filter

When you are not getting enough water onto the floor, clean the water filter. Before you clean the fresh water filter make sure that the water valve that is just above the filter, is turned off. Open the battery cover by opening the bolt latch. Pull off the tubing connected to the solenoid. Unscrew the base of the filter housing and remove the filter. Wash the filter out in running water, and reassemble. Don't forget to open the manual water valve.



Scan this QR code with your smart phone to watch the Mopit squeegee replacement video. You can view all of our Mopit movies on the “Mopit Channel” at www.youtube.com.



MAINTENANCE / SERVICE

Changing The Squeegee Blade

On average the squeegee blade will need to be changed every 6-8 weeks. If the machine is leaving streaks, and not picking up all of the water, or the Mopit is not cleaning very well, check your squeegee blade for wear. The squeegee blades are reversible, so you can reverse the blade for longer squeegee life. Often you will only need to change the rear blade, as the front blade is a more durable material, and should last much longer than the rear blade. The front and rear squeegee blades have different bead shapes. The rear blade bead is round and the front blade bead is triangle, so you cannot install the blades backwards.

1. Tip the Mopit on its back
2. Remove the squeegee wheel
3. Slide out the old blades
4. Get the rear squeegee blade wet so its easier to slide into the channel
5. Slide in reversed, or replacement blades
6. Replace squeegee wheels if worn





Scan this QR code with your smart phone to watch how to adjust the brush pressure. You can view all of our Mopit movies on the “Mopit Channel” at www.youtube.com.

MAINTENANCE / SERVICE

Adjusting The Brush Pressure

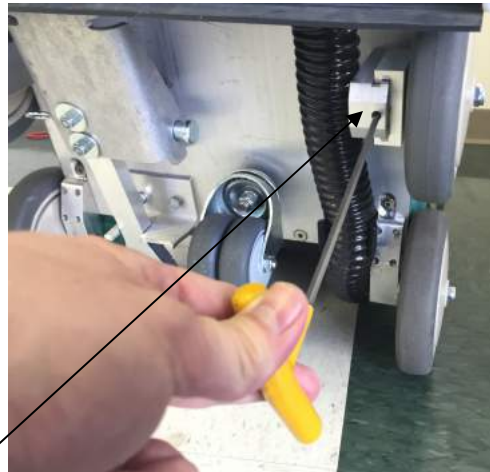
WARNING: Adjusting the brush too low can damage the brush motor and lessen the cleaning performance.

As the scrub brush wears, your brush pressure on the floor will lessen. To compensate for brush wear, adjust the wheels to lower the brush head.

To adjust the brush pressure, tip the machine on its back.

Insert a the included 5/32 Allen wrench into the wheel block windows.

Turn the Allen wrench counterclockwise one complete turn. Adjust both wheels by the same amount.



IMPORTANT: You must adjust each wheel by the same amount. Failure to do so will cause un-even brush wear. If you don't know if the wheels have both been evenly adjusted, turn the screw as far as you can clockwise, then begin again to adjust each wheel counterclockwise by the same amount. It is wise, with each full turn of the screw, to stand the machine back up and check the brush deflection from the side of the machine. **We recommend one inch of brush of the brush touching the floor but only a 1/4 inch of the brush height on the floor. Check the brush deflection from the sides of the brush hood while the brush is spinning. Brush deflection means the amount of the brush touching the floor. It is easiest to see using a flashlight.**

MAINTENANCE / SERVICE

Belt Replacement And Tensioning

1. Tip the Mopit on its back
2. Remove belt cover with a $7/16$ " socket
3. Loosen these two $1/8$ " Allen screws with a $3/16$ " Allen wrench
twist the belt tensioning screw counter clockwise
4. Remove old belt
5. Installation is the above steps in reverse
6. Tension belt to $3/8$ " Deflection





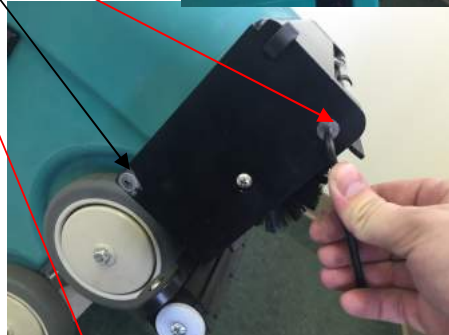
Scan this QR code to watch a short movie on how to change the Mopit brush. All of our Mopit movies can be found on "The Mopit Channel" at www.youtube.com.

MAINTENANCE / SERVICE

Brush Replacement

The Mopit 4.5 scrub brush is very durable and should last several years. As the brush wears it can be lowered by following the instructions on page 10. For replacement follow the steps below.

1. Remove the two 5/32 Allen screws on the right side of the brush hood with the on-board Allen tool
2. Pull off the bearing plate.
3. Pull the old brush out of the hood
4. Installation is the above steps in reverse



Scan this QR code with your smart phone to watch how to clean the recovery tank. You can view all of our Mopit movies on the “Mopit Channel” at www.youtube.com



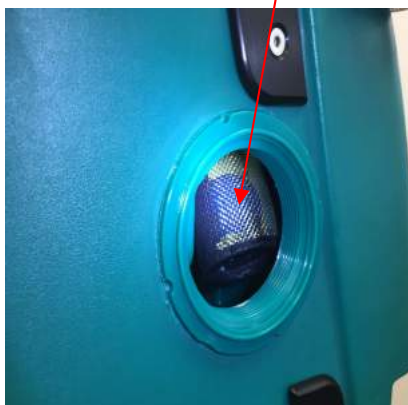
MAINTENANCE / SERVICE

Cleaning The Recovery Tank And Vacuum Ball Basket (filter)

If the recovery tank is not cleaned out regularly the Mopit will begin to stink when used. To clean, remove the clean out access cap by twisting it counterclockwise. Open the drain hose and place it over a floor drain. Use a hose with a sprayer to spray out the recovery tank. It may also help to back flush the drain hose.

After spraying out the tank, use a trigger sprayer to spray undiluted bleach all over the inside of the recovery tank. Let the tank sit with the clean out cap and drain hose cap off until the inside of the recovery tank is dry. If your machine still has a foul odor order some Mopit deodorizer from Spectrum.

The Mopit 4.5 has two recovery tank clean out ports. The black one is used to clean the tank, and the green one on the right side is used to clean the vacuum ball basket (filter).



Scan this QR code with your smart phone to watch how to replace the battery pack. You can view all of our Mopit movies on the “Mopit Channel” at www.youtube.com



MAINTENANCE / SERVICE

Replacing The Battery Pack

A properly cared for lead acid battery pack should last for 800 charging cycles, which is generally 4-5 years.

IMPORTANT: It is critical that the batteries be replaced with sealed gel cell or AGM type lead acid type batteries. Standard wet lead acid batteries will leak, and may be explosive. If you have questions about replacement batteries call Spectrum at 1-800 290 2833.

To change out the battery pack, you will need a Phillips screw driver and two 7/16” wrenches.

1. Drain the fresh water, and recovery tanks
2. Turn off the manual water valve
3. Open the battery cover door and pull off the tubing that connects to the fresh water filter to the solenoid
4. Close the battery cover
5. Remove these 4 screws. There are two screws on each side



MAINTENANCE / SERVICE

Replacing The Battery Pack *continued*

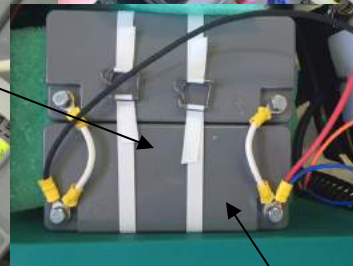
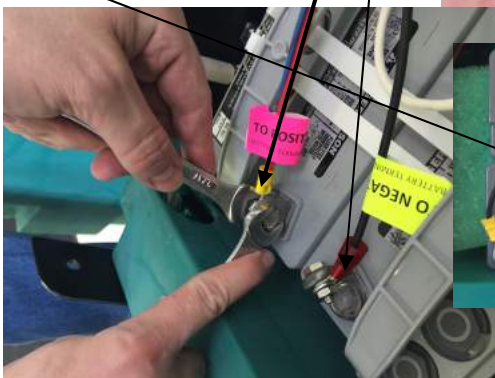
6. Gently tip the top of the Mopit onto its side. You shouldn't have to remove any of the hoses.

7. Disconnect the Black rubber molded connector

8. **As you complete the next step be sure that you don't short circuit the battery by touching any two battery terminals at the same time with your wrenches**

9. Remove the Positive and Negative battery terminal wiring harness. With two 7/16" wrenches. The white harness should not be removed.

10. Replace the batteries, and complete the installation by following the above steps in reverse. (Lithium batteries are hooked up in parallel as shown in this photo)



Lithium Batteries

MAINTENANCE / SERVICE

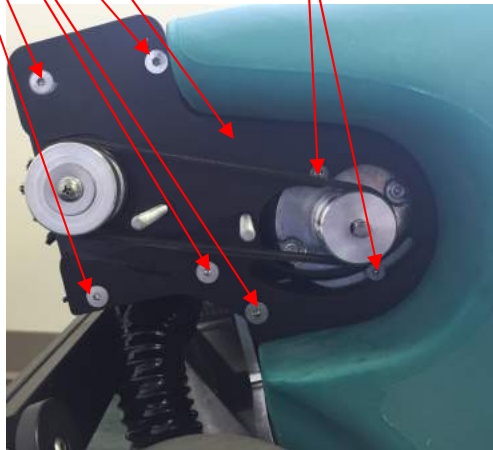
Brush Motor Replacement

On rare occasions the brush motor may need to be replaced. Please call Spectrum at 1-800-290-2833 to troubleshoot and see if your brush motor needs to be replaced.

You **do not** need to remove either of the plastic tanks for motor replacement. It is easiest to replace the brush motor with the Mopit on its back.

You will need a 7/16 socket, 5/32, 1/8, and 3/16 Allen wrenches

1. Follow the steps on page 11 to remove the belt
2. Remove the two pulleys by using a 1/8 Allen wrench to remove the set screws
3. Remove the five Allen bolts using a 5/32 Allen wrench
4. Pull the brush motor plate out of the machine. There is enough wire on the brush motor so you should be able to set the whole assembly on the ground without disconnecting the wiring
5. Remove the two motor screws using a 1/8 Allen wrench
6. Replacement is the above steps in reverse
7. **HINTS:** Make sure that the motor pulley is touching only the motor shaft, not the motor base. Make sure that you tighten the set screws onto the flats of the shafts.



MAINTENANCE / SERVICE

Battery Charger Replacement

On rare occasions the battery charger may need to be replaced. If the power light does not come on when plugged in, or if the batteries are not accepting a charge, the charger may need to be replaced. Call Spectrum to help you decide if you need a new charger.

Vacuum Motor Replacement

1. Drain your fresh water tank, and disconnect the tubing from the fresh water tank outlet. See draining the fresh water tank on page 8
2. Remove these four 5/32" Allen screws (two on each side)
3. Lift the top tank off of the Mopit and disconnect the two terminals that go to the vacuum motor
4. Set the top tank on the floor
5. Remove the 7/16" nuts that hold the vacuum motor onto the tank
6. To install the new motor follow the above steps in reverse. It doesn't matter which wire you connect the terminals to upon reassembly.



MAINTENANCE / SERVICE

Replacing Water Solenoid

1. Turn off the manual water valve
2. Open the battery cover door
3. Remove the two hoses from the solenoid
4. Disconnect the power terminals from the solenoid
5. Using a 5/32" Allen tool and a 7/16" wrench remove the solenoid from the battery cover door
6. To replace follow the above steps in reverse
7. Don't forget to turn the manual water valve back on



Replacing the Drip Tube

Occasionally you may need to replace your drip tube if it becomes filled with debris or you can't get water consistently out of it.

1. Turn off the manual water valve
2. Slide the drip tube out of the 4 clamps.
3. Pull the drip tube off of the tubing at the tee
4. Replace by following the above steps in reverse



MAINTENANCE / SERVICE

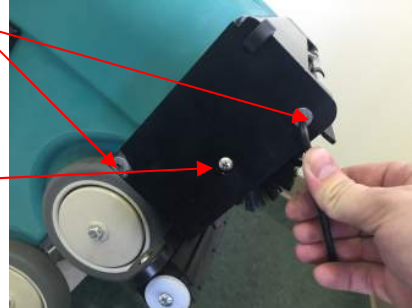
Drain Hose Replacement

1. Drain the dirty water
2. Loosen the hose clamp with a nut driver or flat head screw driver and pull off the hose
3. Replace the hose and tighten the hose clamp



Idle Bearing Replacement

1. Remove the two 5/32 Allen screws from the end plate, and remove end plate.
2. Remove the Phillips screw and pull off the old bearing idle cup.
3. Replace the idle cup / bearing assembly



Drive Bearing Replacement

1. Follow the instructions on pages 11 and 16 for removing the brush and brush motor
2. Pull off the bearing plate, and replace with a new bearing plate assembly from spectrum

TROUBLESHOOTING

Not Getting Any Water

1. Make sure the vacuum and solution switches are both on
2. Check to make sure the manual water valve (pg 6) is turned on.
3. Check to make sure there is water in the fresh water tank.
4. Check to make sure you are getting water past the fresh water filter. Pull off the tubing below the filter and open the manual water valve to make sure water comes out.
5. Check to make sure that the solenoid “clicks when you turn on the vacuum motor and flip the solution switch on and off.
6. Replace the drip tube. See page 18
7. Call Spectrum for additional troubleshooting

Mopit Batteries Not Charging

Call Spectrum for troubleshooting. Also see page 17 on charger replacement.

Mopit Is Leaving Black Marks

The most common cause is not getting water onto the floor. Black marks can also be caused by missing or worn squeegee wheels. See above for how to fix water issues and page 9 for squeegee replacement.

Mopit Machine Smells When I Use It

The Mopit will stink when the recovery tank is not cleaned out regularly. See page 13 for how to clean the tank.

Mopit Machine Is Shocking Me When In Use

Shocking happens when no water is getting to the floor. The static electricity from the spinning brush causes the shocking. To fix this issue follow page 20 on not getting any water.

TROUBLESHOOTING

Mopit Machine Leaks When Not In Use

The most common cause for this is a faulty solenoid. Until we can get you a new solenoid simply turn off the manual water valve (pg 6) when the Mopit is not in use. Also see solenoid replacement (pg 19). The leak may also be coming from a drain hose that has a hole in it.

Mopit Not Cleaning Well

Several factors determine how well the Mopit will clean.

1. Water: use hot water for best cleaning. If no water is getting on the floor or the water delivery is uneven, the cleaning will be poor. See page 20 Not Getting Any Water, to make sure water delivery is working
2. Brush Pressure: see adjusting and checking brush pressure (pg 10)
3. Suction and water recovery: If your machine is not sucking up the water well, see page 22 for help. You can also lift the squeegee to double scrub very dirty areas see page 7 (Squeegee pedal)
4. Battery Charge: If your battery is weak you won't have much suction or scrubbing power. See page 7 on battery charging
5. For more help call Spectrum 1-800-290-2833

TROUBLESHOOTING

My Mopit Is Not Picking Up Water

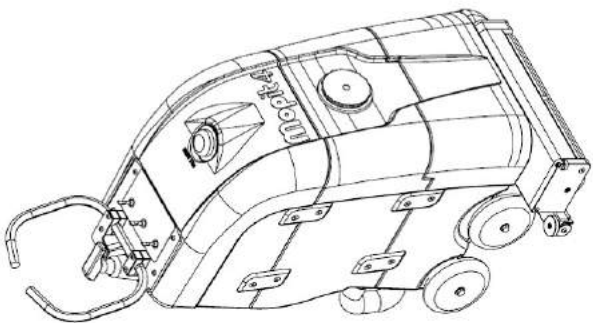
If the Mopit is not picking up water, there is an issue with the water recovery system. Here are the things to check:

1. Check the squeegee blades for wear and replace if necessary (pg 9)
2. Make sure the squeegee lift is in the down position (pg 7)
3. Make sure the drain hose cap is screwed on tightly
4. Make sure the Squeegee hose is firmly inserted into the hose receiver
5. Check the vacuum tube for obstructions
6. Flush water down the Squeegee hose to clear any clogs
7. Make sure the dirty water tank clean out cap is on (pg 13)
8. Make sure the dirty water tank is empty
9. Check the Vacuum ball basket inside the dirty water tank. Make sure the ball inside the screen is at the bottom, not stuck in the top. If stuck, spray as shown on page 13
10. Turn on the Vacuum switch and feel the squeegee hole for suction
11. Make sure the squeegee horn is clear
12. Make sure both squeegee wheels are on, and are not worn. The wheels should be replaced each time the squeegee is replaced. They are included in each squeegee replacement kit



MOPIT 4.5 PARTS DIAGRAM

ITEM NO.	PART NUMBER	DESCRIPTION	QTY.
1	4003_05.BRUSH_HOOD	BRUSH HOOD	1
2	4001_05.BRSH_SD_A	FREE SIDE END PLATE	1
3	4002_06.BRSH_SD_B	DRIVE SIDE END PLATE	1
4	4007_05.MTR_PLT	MOTOR MOUNT PLATE	1
5	4100_02.BRSH_CVR_WHL	BRSH CVR WHEEL	1
6	4132.BRUSH	BRUSH	1
7	4020_09.BS_PLT	BASE PLATE	1
8	92210A542	1/4 - 20 X 1	7
9	4167.SCRW	8 - 32 X 1 1/4	1
10	4107_01.SQGE	SQUEEGEE	2
11	92210A540	1/4 - 20 X 3/4	3
12	4134_01.MOTOR	BRUSH MOTOR	1
13	4169.SCRW	SCREW	3
14	4170.SCRW	10 - 32 X 5/8	1
15	4120_06.HX_SF_LNG	DRIVE SIDE HEX SHFT (LONG)	1
16	4136_01.DRTY_CLN_BS	DIRTY CLEAN OUT, BASE	1
17	4137.DRTY_CLN_LID	DIRTY CLEAN OUT, LID	1
18	4133_01.FLTR_ASSY	FILTER ASSEMBLY	1
18.1	4103_01.FLTR_BTTM	FILTER BOTTOM (MALE)	1
18.2	4104_01.FLTR_SCRN	FILTER SCREEN	1
18.3	4102_01.FLTR_TP	FILTER TOP (FEMALE)	1
19	4054_09.BTRY_CVR	BATTERY COVER	1
20	4171.SCRW	1/4 - 20 X 5/8 BUTON HEAD	11
21	4126_04.LRG_PULY	LARGE PULLEY	1
22	4138_01.SMALL_PULY	SMALL PULLEY	1
23	4130_03.PULY_CVR	BRUSH PULLEY COVER	1
24	4101_02.DRTY_HS_HLDR	DIRTY HOSE HOLDER	1
25	4142_14.MPT_TNKS_ASSY	MOPIT TANKS ASSEMBLY	1
25.1	4127_22.BTTM_TNK	BOTTOM TANK	1
25.2	4128_22.MDDL_TNK	MIDDLE TANK	1
25.3	4129_22.TP_TNK	TOP TANK	1
25.4	4139_01.THREDD_INSRT	THREADED INSERT 1/4-20 UNC	2
25.5	4140_01.VCCM_SNRKL_MUNT	VACCUUM SNORKEL MOUNT	1
25.6	4141_01.VCCM_B	VACCUUM B.	1
25.7	4051_01.VCCM_FTR_ASSY	VACCUUM FILTER ASSEMBLY	1
25.7.1	4113_01.VCCM_FTR_SCRN	VACCUUM FILTER SCREEN	1



DESCRIPTION: MOPIT 4 TOP ASSEMBLY
PART NUMBER, REVISION DESCRIPTION: 4118_30.MOPIT_4_TA

UNLESS OTHERWISE SPECIFIED	DRAWN: B WESTFALL	NAME	DATE
TOLERANCES ARE IN INCHES	CHECKED		2/7/2015
FRACTIONAL: 1/64	MFG APPR		
DECIMAL: 0.005			
TWO PLACE DECIMAL: ± 0.010			
THREE PLACE DECIMAL: ± 0.005			
DON'T SCALE DRAWING			
MATERIAL	SEE BOM		
FINISH	SEE BOM		
REF: ADEN 1145 - 2009			

PROPERTY AND CONFIDENTIALITY NOTICE: THE INFORMATION CONTAINED HEREIN IS THE PROPERTY OF MOPIT, INC. AND IS NOT TO BE REPRODUCED OR DISCLOSED TO ANY OTHER PARTY WITHOUT THE WRITTEN PERMISSION OF MOPIT, INC.

SCALE: 1:20 SHEET 1 OF 6 SIZE A

PART NO.	DWG. NO.	REV.
4118	BW100	30

MOPIT 4.5 PARTS DIAGRAM

ITEM NO.	PART NUMBER	DESCRIPTION	QTY.	ITEM NO.	PART NUMBER	DESCRIPTION	QTY.
25,7,2	4114_VCCM_FLTR_TP	VACUUM FILTER TOP	1	61	4159_01_SPRY_BTLE	SPRAY BOTTLE	1
26	4115_04WR_CVR	WIRE COVER	1	62	4161_01_SQG_TP_WHL	SQUEEGEE TIP WHEEL	2
27	4050_05SWTCH_PLT	DASH PLATE	1	63	4181_VLV	VALVE	1
28	4122_01_VCCM_HS	VACUUM HOSE	1	64	4158_01_ID_ACD_BTTRY	LEAD ACID BATTERIES	2
29	4172_SCRW	1/4 - 20 X 3/4	40	65	4163_01_FLL_GAGE_TB	FILL GAGE TUBE	1
30	4143_01_WHL	WHEEL	4	66	4164_01_PLLY_TP_WHL	PULLEY TOP WHEEL	2
31	4027_02_TRNSPRT_WHL_MNT	TRANSPORT WHEEL MOUNT	2	67	4116_02_CNCTN_RGHT	CONNECTION PLATE, RIGHT SIDE	4
32	4144_01_CSTR	CASTOR	1	68	4117_03_CNCTN_LFT	CONNECTION PLATE, LEFT SIDE	4
33	4173_NUT	3/8 - 16 NUT	1	69	4165_01_CSTR_SPCR	CASTOR SPACER	1
34	4174_SCRW	SCREW 3/8 - 16 X 1 3/8	1	70	4192_WSHR	WASHER 3/8 X 0.05	4
35	4111_03STFFNG_BM	STIFFENING BEAM	1	71	4183_SCRW	BOLT 3/8 - 16 X 2	4
36	4145_01_HNDL_CLMP	HANDLE CLAMP	4	72	4184_01_SQG_SPRNG	SQUEEGEE BAR SPRING	1
37	4176_SCRW	SCREW 1/4 - 20 X 1 3/4 BUTTON HEAD	4	73	4185_NUT	NUT 1/4 - 20	4
38	4146_01_HS_CTCH	HOSE CATCH	2	74	4186_SCRW	SCREW 1/4 - 20 X 1/2 BUTTON HEAD	12
39	4147_01_SWTCH	SWITCH	3	75	4187_SCRW	SCREW 10-24 X 1/2 BUTTON HEAD	12
40	4148_02_SQG_BRKT_UPPR	UPPER SQUEEGEE BRACKET	1	76	4188_SCRW	SCREW 10-24 X 1 BUTTON HEAD	2
41	4044_02_SQG_BRKT_LWR	LOWER SQUEEGEE BRACKET	1	77	4189_SCRW	SCRW 1/4 - 20 X 1 1/4	1
42	4041_06_SQG_BR	SQUEEGEE BAR	1	78	4190_SCRW	SCREW 10-24 X 3/16 BUTTON HEAD	1
43	4149_01_RELAY	RELAY	2	79	4122_01_6203_BRNG	6203 BEARING	1
44	4150_01_HS_RCVR	VACUUM HOSE RECIEVER	1	81	4196_01_SL_6203	BEARING SEAL 6203	1
45	5151_01_DRN_HS	DRAIN HOSE	1	82	4124_02_FR_50_BRSH_MNT	FREE SIDE BRUSH MOUNT	1
46	4105_06_SQG_LVR	SQUEEGEE PEDAL	1	83	4197_01_BRNG_NSK_6800	NSK 6800 BEARING	1
47	4110_03_SQG_STP	SQUEEGEE STOP	1	84	4123_03_FR_SD_SHFT	FREE SIDE SHAFT	1
48	4153_01_VCCM_SNKL_TB	VACUUM SNOREL TUBE	1	85	4194_PIPE	REDUCING PIPE BUSHING	1
49	4178_SCRW	SCREW BUTTON HEAD	2	86	4192_WSHR	LARGE WASHER, 10 HOLE X 0.05	1
50	4154_01_FLL_GAGE_ELBW	FILL GAGE ELBOW	2	87	4195_SCRW	SCREW 10-24 X 1/2 LOW PROFILE	2
51	4032_03_FLL_SCRN	FILL SCREEN	1	88	4170_LBL	Label	1
52	4155_WHL_ADJSTR_MNT_B	WHEEL ADJUSTOR MOUNT MOD	2	89	4171_02_CHRG_PLT_MNT	CHARGER PLATE HINGE MOUNT	1
53	4156_01_WHL_ADJSTR_SLD	WHEEL ADJUSTOR SLIDE	2	90	4172_02_BTTRY_STP	BATTERY STOP	1
54	4108_02_SQG_BR	SQUEEGEE FOR BAR, REAR	1	91	4198_01_CAP	CAP	1
55	4139_01_THRDID_INSR	THREADED INSERT, 1/4-20 UNC.	3	92	4197_PLUG	Plug	1
56	4157_01_SLND	SOLENOID	1	93	4196_THRD_RD	THREADED ROD 1/4-20 X 2.75	2
57	4179_SPCR	SPACER	3				
58	4109_02_SQG_FRNT	SQUEEGEE FOR BAR, FRONT	1				
59	4106_02_HNDL_BR	HANDLE BAR	1				
60	4119_02_BTTL_HLDR	BOTTLE HOLDER	1				

DESCRIPTION

MOPIT 4 TOP ASSEMBLY

FILE NAME

4118_30.MOPIT_4_1A

DO NOT SCALE DRAWING

SIZE A

PART NO.

DWG. NO.

REV

SHEET 2 OF 6

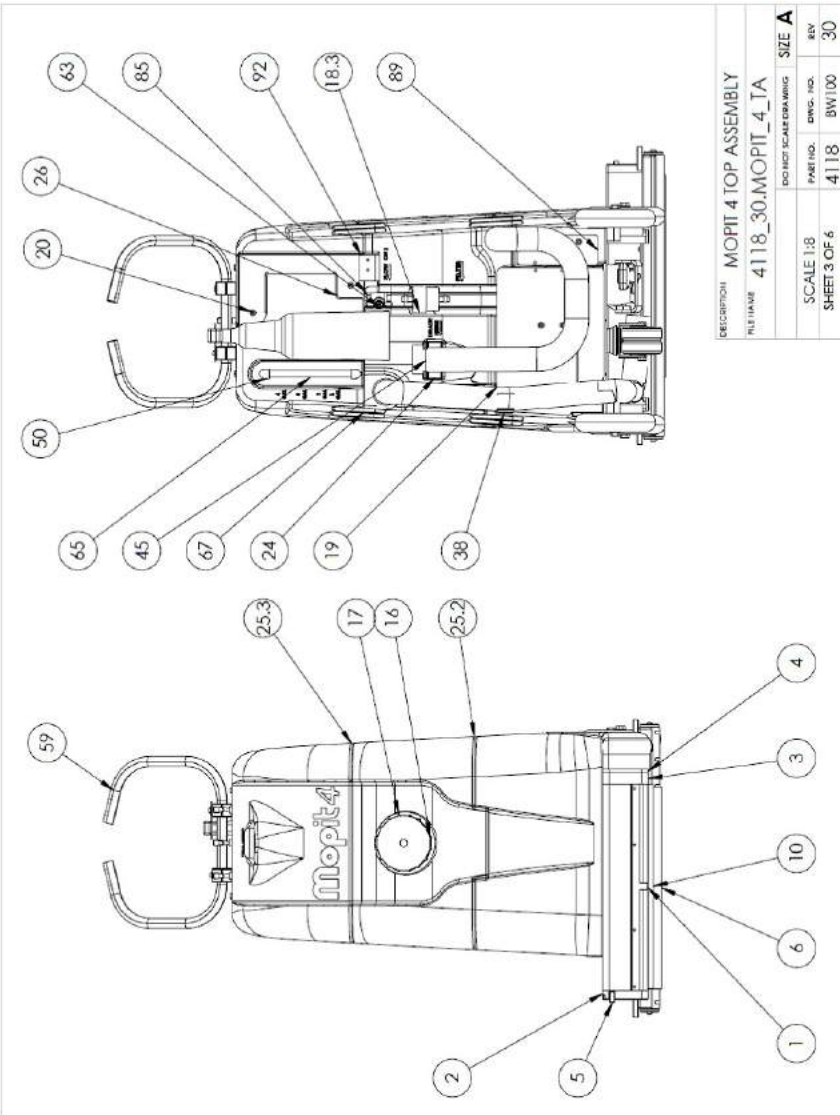
4118

BW100

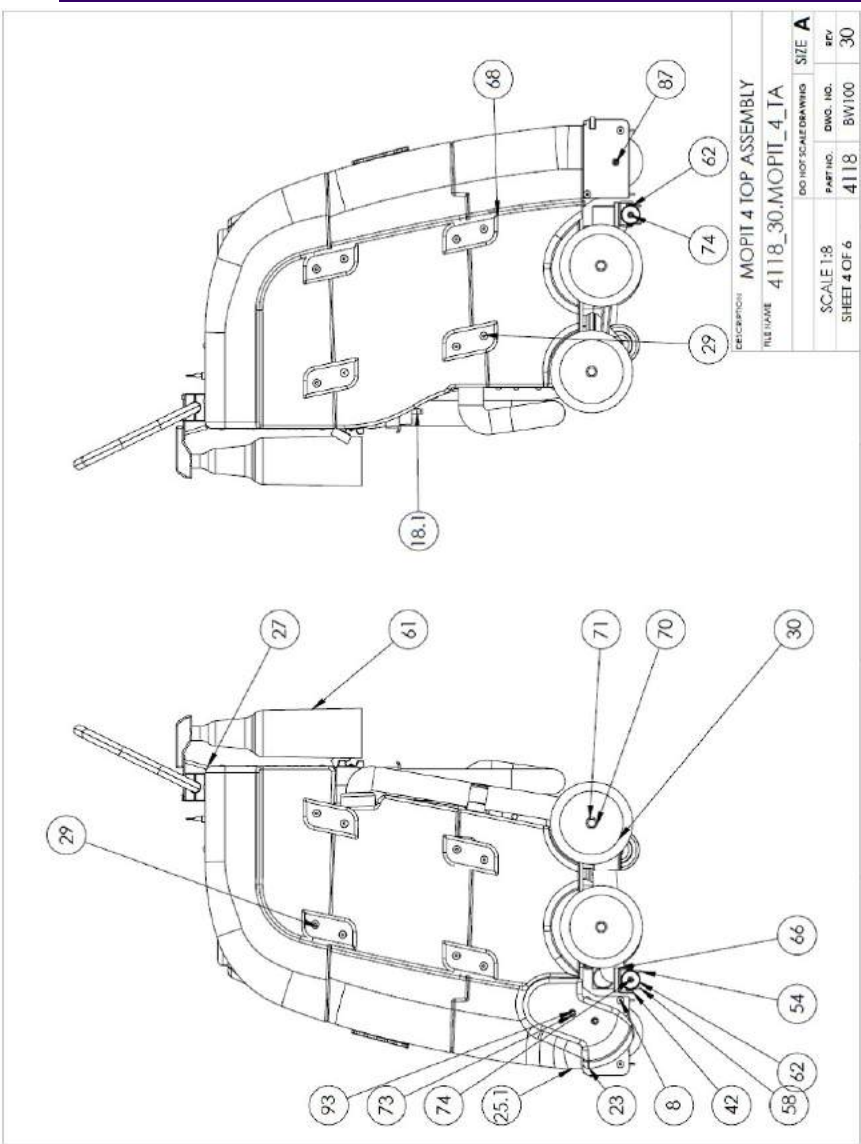
30



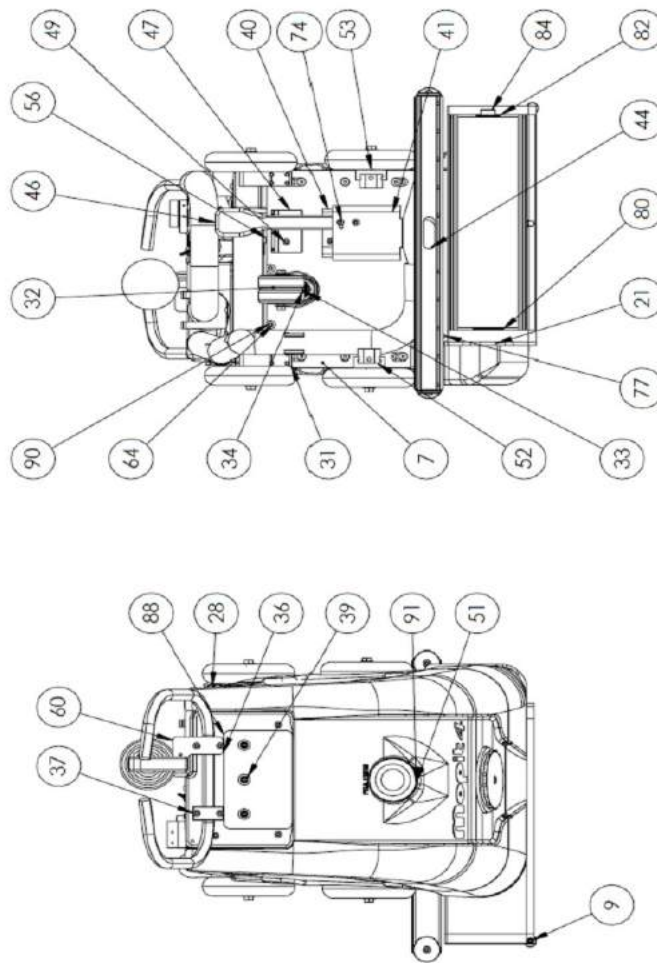
MOPIT 4.5 PARTS DIAGRAM



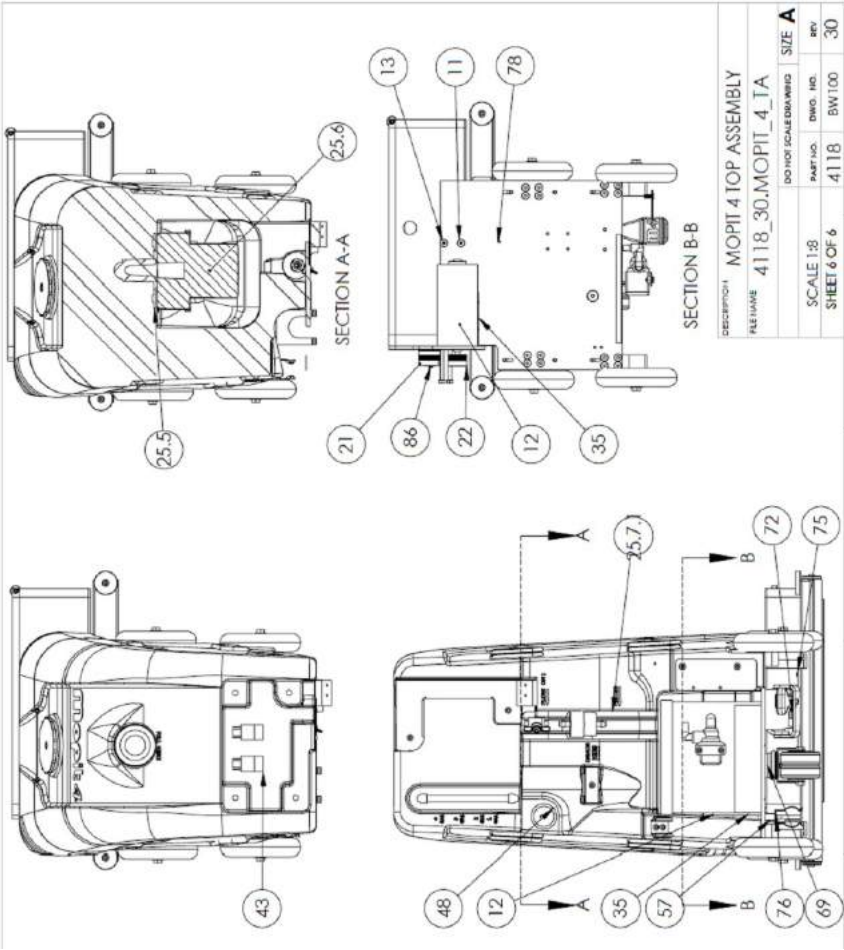
MOPIT 4.5 PARTS DIAGRAM



MOPIT 4.5 PARTS DIAGRAM



MOPIT 4.5 PARTS DIAGRAM



This chart can be printed from our website www.mopitfloorcare.com
Its found under the “support” tab

THE MOPIT CENTER CHART

THE MOPIT CENTER



Use your smart phone or tablet to scan the QR codes.

You can also access everything on this chart by clicking on the “Support” tab on our website.

Please feel free to call or email with any Mopit needs or concerns.

1-800-290-2833

spectrum.ind@gmail.com
www.mopitfloorcare.com



Spectrum Industrial Products
868 West 400 North
Logan, UT 84321

Mopit Training and Supplies

1. Order Mopit supplies, parts, and service
2. View the Mopit training video
3. View the Mopit operator/service manual
4. View the Mopit chemical SDS sheet

Mopit Maintenance

Daily Maintenance:

5. Drain the dirty water tank after each use _____
6. Plug in the Mopit whenever it is not in use _____

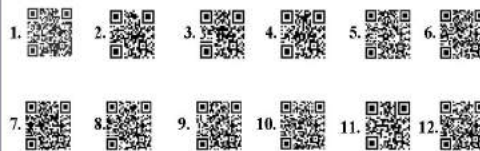
Date: _____

Weekly Maintenance:

7. Clean out the dirty water tank _____
8. Check the squeegee blade for wear _____

Monthly Maintenance:

9. Clean out the fresh water filter _____
10. Check the brush pressure _____
11. Flush the squeegee hose _____
12. Flush the vacuum tube _____



MOPIT 4 QR CODES

Mopit 4 Training Video



Squeegee replacement



Charging the Mopit



Brush Pressure



Brush Replacement



Clean dirty water tank



Drain dirty water



Flush vacuum tube



Clean water filter



Operators manual pdf



Flush squeegee hose



Mopit Chemical SDS



Mopit 4 demo video



All of these videos can be found on by going to the Mopit channel on www.youtube.com. Just search Mopit. They can also be found under the “support” tab on our website www.mopitfloorcare.com

MOPIT 4.5 SPECIFICATIONS

Cleaning Path	15 Inches
Fresh Water Capacity	5 Gallons
Dirty Water Capacity	5.5 Gallons
Solution Flow Rate	.11 to .31 Gallons Per Minute
Scrub Brush Speed	1200 RPM
Brush Size	4 Inches in Diameter
Vacuum Motor	24 Volt 1 Stage, 45.8" Water Lift Sealed
Run Time per Charge	45-60 Minutes
Charger	On-board 24V 5 Amp
Weight	120 Pounds 92 Pounds w/lithium battery
Length	27 inches w/handle in working position
	23.5 inches with handle folded
Height	41 inches w/handle in working position
	33 inches with handle folded
Width	22.2 Inches



Spectrum Industrial Products LLC
868 West 400 North
Logan, Utah 84321
Phone: 1-800-290-2833
Email: mopit@mopit.com
Web: www.mopit.com