



Mopit 3.0

Operator's / Service Manual



Spectrum Industrial Products

868 West 400 North

Logan, UT 84321

1-800-290-2833



Scan this QR code with your smart phone to view the Mopit 3.0 training video. You can view all of our Mopit movies on the "Mopit Channel" at www.youtube.com.

Table of Contents

BASIC OPERATION.....	4-8
Filling the fresh water tank.....	4
Using Mopit cleaning solution.....	4
Water level gauge.....	5
Mopit switches.....	5
Draining the dirty water.....	6
Manual water control valve.....	6
Transporting the Mopit.....	6
Squeegee lift.....	7
Charging the Mopit.....	7
Draining the fresh water tank.....	8
MAINTENANCE / MOPIT SERVICE.....	8-19
Cleaning the water filter.....	8
Changing the squeegee blade.....	9
Adjusting the brush pressure.....	10
Belt replacement.....	11
Brush replacement.....	12
Cleaning the recovery tank.....	13
Battery pack replacement.....	14-15
Brush motor replacement.....	16
Battery charger replacement.....	17
Vacuum motor replacement.....	18
Water solenoid replacement.....	19
Mopit maintenance schedule.....	26
TROUBLESHOOTING.....	20-22
Water is spilling over the brush hood.....	20
Not getting any water.....	20
Mopit batteries not charging.....	20
Mopit leaving black marks.....	21
Mopit machine smells when I use it.....	21
Mopit machine shocks me.....	21
Mopit machine leaks when not in use.....	21
Mopit not cleaning well.....	21
Mopit is not picking up water.....	22
MOPIT DIAGRAMS.....	23-25

BASIC OPERATION

Before using the Mopit 3.0 you need to fill it with water and cleaning solution.

Filling The Fresh Water Tank

This is where you fill the Mopit with water. It is best to add the cleaning solution before you add the water, this promotes thorough mixing. It is ok to let water stay in the fresh water tank for an extended period of time.



Using Mopit Cleaning Solution

Mopit cleaning solution is very concentrated. It only takes one ounce of solution per Mopit fill. The 1/2 gallon of Mopit cleaning solution should fill your Mopit 64 times.



Fill the one ounce measuring cup (included) with the Mopit cleaning solution and dump it into the fill screen.

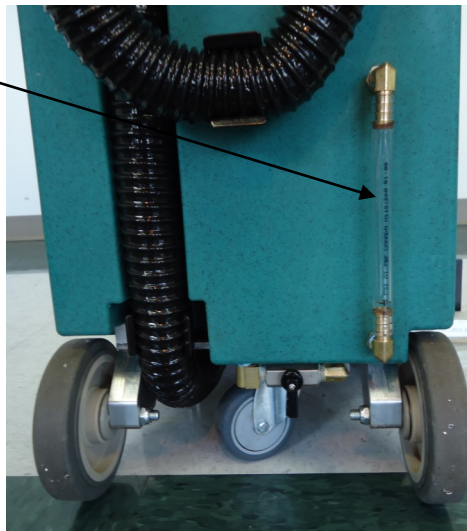


BASIC OPERATION

Water Level Gauge

This is the water level gauge.
Hint: When the fresh water is to the top of the fill screen the water level is above the top of the water level gauge. This is normal.

Now that the Mopit is full of water we can turn it on and use it.



The Mopit Has 3 Switches

The Brush Switch

The Water Switch

The Vacuum Switch

Simply turn on all three switches and walk.

The water switch will work only when both the brush and water switches are on.

You can use the brush and vacuum on for deep scrubbing, or you can use the brush and vacuum without the water, for pickup-only mode.



When operating the Mopit you may walk at a normal pace.



Scan this QR code with your smart phone to watch how to drain the dirty water. You can view all of our Mopit movies on the “Mopit Channel” at www.youtube.com.

BASIC OPERATION

Draining The Dirty Water

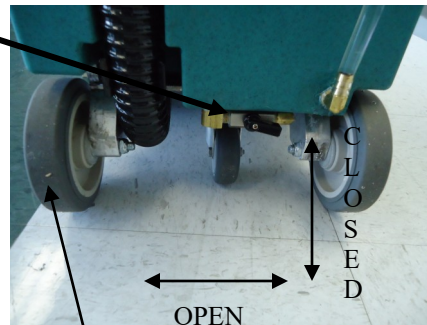
This is the dirty water drain hose. Simply remove the cap and let the drain hose down onto a floor drain. After draining, be sure to put the cap on tightly. If the cap is not screwed on tightly the machine will lose suction power. It is important to drain the dirty water tank after each use. If dirty water sits in your dirty water tank for an extended period of time, your machine will start to stink.



Manual Water Control Valve

The water control valve controls how much water goes into the drip tray. If, when you turn corners sharply, water spills over the edge of the brush hood, close the valve a little to lower the water level in the drip tray.

The water valve is **on** when the black valve handle is parallel to the floor, and **off** when the handle is pointing to the floor.



Transporting The Mopit

When moving the Mopit, tip it on it's back transport wheels and move it like an upright floor vacuum.



Scan this QR code with your smart phone to watch how to charge the Mopit. You can view all of our Mopit movies on the “Mopit Channel” at www.youtube.com.

BASIC OPERATION

Squeegee Lift

All Mopit 3.0s are equipped with a squeegee lift. The squeegee lift is used for deep cleaning. It allows you to make multiple passes without picking up the water on the floor. This is called double scrubbing.



When the handle is pointing down, the squeegee is up, and the machine is ready to double scrub. When the handle is pointing up, the squeegee is down. When double scrubbing you may shut off the vacuum to preserve battery life. When you lower the squeegee, turn on the vacuum to pick up the water.

Charging The Mopit

The Mopit is battery operated. It should be plugged in whenever it is not being used. The on-board battery charger is automatic. It will turn off when the batteries are charged. You do **not** need to wait until the batteries are fully charged to use the Mopit. You do **not** need to run the batteries down before you can charge the Mopit.





Scan this QR code with your smart phone to watch how to clean the water filter. You can view all of our Mopit movies on the “Mopit Channel” at www.youtube.com.

BASIC OPERATION

Draining The Fresh Water Tank

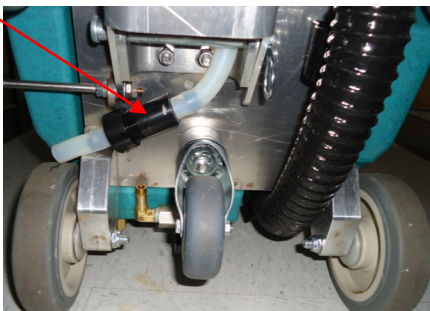
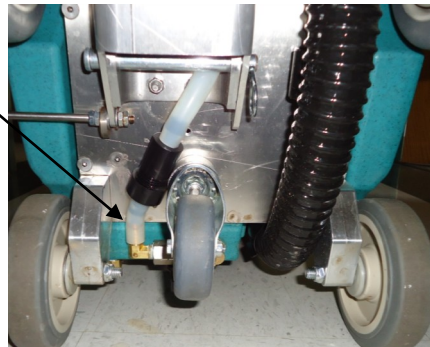
Occasionally you may need to drain the fresh water tank. The tank will need to be drained before shipping. There is no harm in leaving water in the fresh water tank for an extended period of time. You will want to have the machine outside or positioned over a floor drain when you drain the tank.

To drain the fresh water tank, tip the machine on it's back and pull off the white silicone tubing attached to the water valve. This tubing is easy to pull off with just your fingers. Once the tubing is off, open the water valve all the way. And tip the Mopit right side up. If the fresh water tank is full it may take as long as 15 minutes for it to drain.

Once the fresh water is drained, slide the tubing back onto the valve.

Cleaning The Water Filter

When you are not getting enough water to the drip tray, clean the water filter. Pull the filter housing out of the silicone tubing and twist the housing apart. Pull the filter out and rinse it under running water. Install with the thickest part of the housing closest to the water valve.





Scan this QR code with your smart phone to watch how to change the squeegee blade. You can view all of our Mopit movies on the “Mopit Channel” at www.youtube.com.

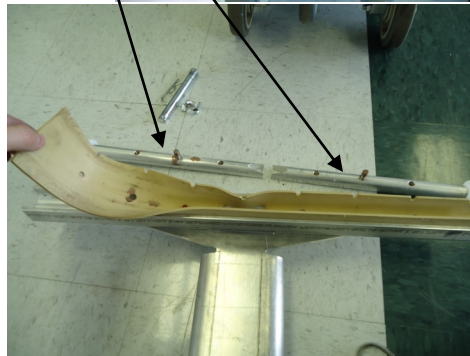
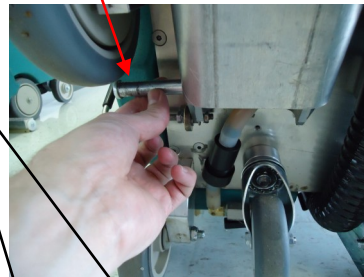
MAINTENANCE / SERVICE

Changing The Squeegee Blade

On average the squeegee blade will need to be changed every 6-8 weeks. If the machine is leaving streaks, and not picking up all of the water, or the Mopit is not cleaning very well, check your squeegee blade for wear.

How to replace the squeegee blade

1. Tip the machine on it's back
2. Pull the retaining clip and remove the pin
3. Pull the black squeegee hose off of the squeegee assembly
4. Remove the wing nuts on the squeegee bar
5. Remove the 2 squeegee inserts. If necessary you may tap the wing nut bolts from the back side of squeegee to help with removal
6. Remove old squeegee blade
7. Replace plastic squeegee wheels
8. Install in reverse order
9. **Make sure the notched side of the squeegee blade is facing to the front, closest to the brush**





Scan this QR code with your smart phone to watch how to adjust the brush pressure. You can view all of our Mopit movies on the “Mopit Channel” at www.youtube.com.

MAINTENANCE / SERVICE

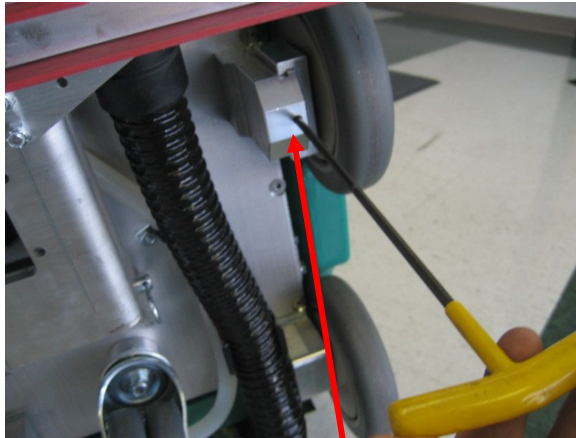
Adjusting The Brush Pressure

WARNING:

Adjusting the brush too low will damage the brush motor and lessen the cleaning performance.

As the scrub brush wears, your brush pressure on the floor will lessen.

To compensate for brush wear, adjust the wheels to lower the brush head.



To adjust the brush pressure, tip the machine on its back.

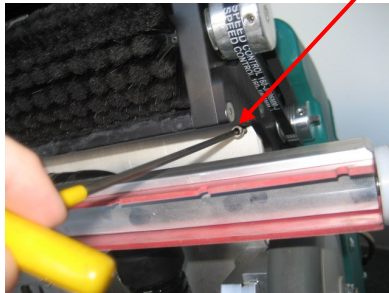
Insert a 5/32 Allen wrench into the wheel block windows. Turn the Allen wrench counterclockwise 1 1/2 complete turns. Adjust both wheels by the same amount.

IMPORTANT: You must adjust each wheel by the same amount. Failure to do so will cause un-even brush wear. If you don't know if the wheels have both been evenly adjusted, turn the screw as far as you can clockwise, then begin again to adjust each wheel counterclockwise by the same amount. It is wise, with each full turn of the screw, to stand the machine back up and check the brush deflection from the side of the machine. **We recommend one inch of brush deflection. Check the brush deflection from the sides of the brush hood while the brush is spinning. Brush deflection means the amount of the brush touching the floor. It is easiest to see using a flashlight.**

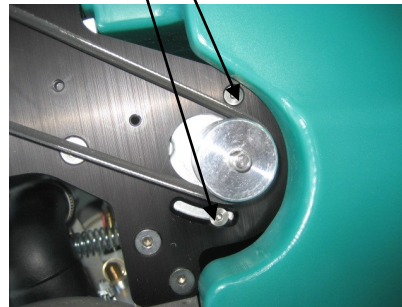
MAINTENANCE / SERVICE

Belt Replacement And Tensioning

1. Remove belt cover with Phillips screw driver
2. Loosen these two 1/8" Allen screws
3. With a 3/16" Allen wrench twist the belt tensioning screw counter clockwise
4. Remove old belt
5. Installation is the above steps in reverse



6. Tension belt to 3/8" Deflection



TIP: IT IS EASIER TO DO THIS OPERATION WITH THE MOPIT TIPPED ON ITS BACK.

Scan this QR code to watch a short movie on how to change the Mopit brush. All of our Mopit movies can be found on “The Mopit Channel” at www.youtube.com.

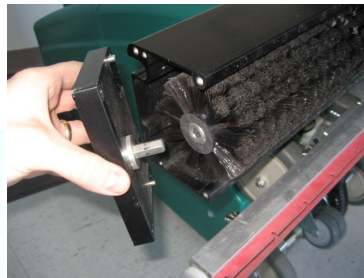
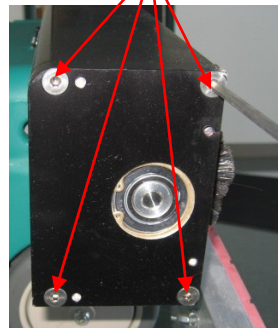


MAINTENANCE / SERVICE

Brush Replacement

The Mopit 3.0 scrub brush is very durable and should last several years. As the brush wears it can be lowered by following the instructions on page 10. For replacement follow the steps below.

1. Remove the four 5/32 Allen screws on the right side of the brush hood
2. Pull off the bearing plate. You may need to use a mallet to break it loose
3. Pull the old brush out of the hood
4. Installation is the above steps in reverse





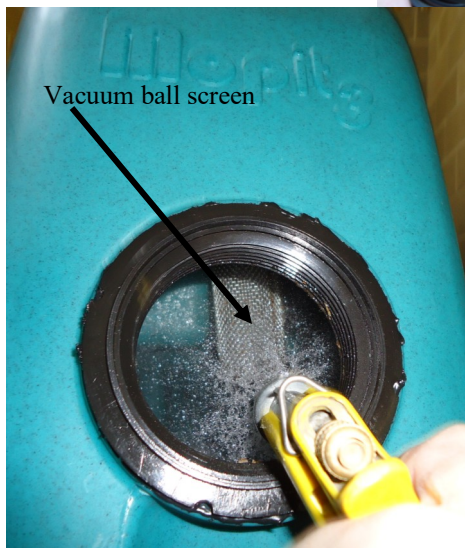
Scan this QR code with your smart phone to watch how to clean the recovery tank. You can view all of our Mopit movies on the “Mopit Channel” at www.youtube.com.

MAINTENANCE / SERVICE

Cleaning The Recovery Tank

If the recovery tank is not cleaned out regularly the Mopit will begin to stink when used. To clean, remove the clean out access cap by twisting it counterclockwise. Open the drain hose and place it over a floor drain. Use a hose with a sprayer to spray out the recovery tank. Spray the Vacuum ball screen. It may also help to back flush the drain hose.

After spraying out the tank, use a trigger sprayer to spray undiluted bleach all over the inside of the recovery tank. Let the tank sit with the clean out cap



and drain hose cap off until the inside of the recovery tank is dry. If your machine still has a foul odor place 3 ounces (3 measuring cups) of Mopit cleaning solution into the recovery tank and then fill the recovery tank with water. Let it sit for a few minutes and then drain the tank.

MAINTENANCE / SERVICE

Replacing The Battery Pack

A properly cared for lead acid battery pack should last from 4-5 years.

IMPORTANT: It is critical that the batteries be replaced with sealed gel cell or AGM type lead acid type batteries. Standard wet lead acid batteries will leak, and be explosive. If you have questions about replacement batteries call Spectrum at 1-800 290 2833.

To change out the battery pack, you will need a Phillips screw driver. Before you start, drain the recovery tank.

1. Pull the drain hose out from the upper and lower hose keeper
2. Remove the upper hose keeper bracket
3. Pull the vacuum hose out from the back of the recovery tank

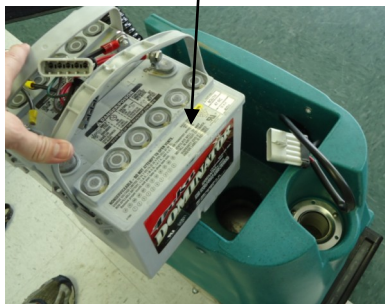
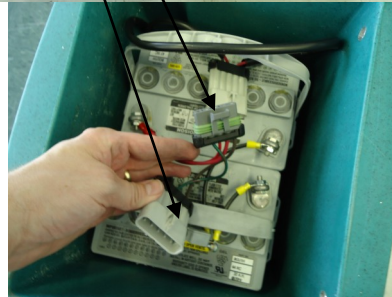
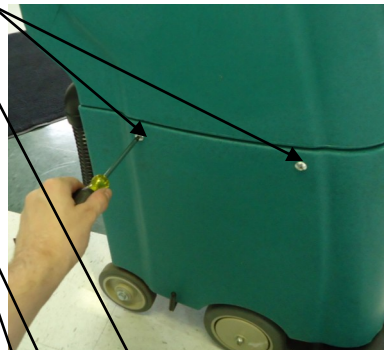


MAINTENANCE / SERVICE

Replacing The Battery Pack *continued*

4. Remove the four Phillips screws that hold the top and bottom half of the Mopit together (Two on each side)
5. Tip the top half of the machine on its handle bars
6. Disconnect the two wiring harnesses
7. Remove the battery pack
8. Installation is the above steps in reverse

If your new battery pack does not have a wiring harness, remove the harness from your old battery pack and install it the same way your old one was installed.



MAINTENANCE / SERVICE

Brush Motor Replacement

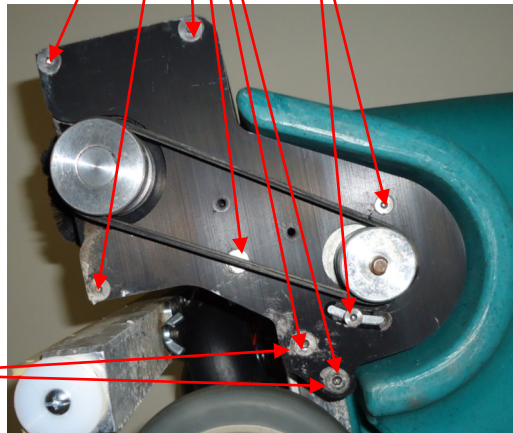
On rare occasions the brush motor may need to be replaced. Please call Spectrum at 1-800-290-2833 to troubleshoot and see if your brush motor needs to be replaced.

You **do not** need to remove either of the plastic tanks for motor replacement. It is easiest to replace the brush motor with the Mopit on its back.

You will need a Phillips screw driver, 5/32, 1/8, and 3/16 Allen wrenches

1. Follow the steps on page 11 to remove the belt
2. Remove the two pulleys by using a 1/8 Allen wrench to remove the set screws
3. Remove the six Allen bolts using a 5/32 Allen wrench
4. Pull the brush motor plate out of the machine. There is enough wire on the brush motor so you should be able to set the whole assembly on the ground without disconnecting the wiring.
5. Remove the two motor screws using a 1/8 Allen wrench
6. Replacement is the above steps in reverse

7. **HINTS:** Make sure that the motor pulley is touching only the motor shaft, not the motor base. Make sure that you tighten the set screws onto the flats of the brush and motor shafts. Make sure to replace the motor spacing block behind these two screws.



MAINTENANCE / SERVICE

Battery Charger Replacement

On rare occasions the battery charger may need to be replaced. If the red light does not come on when plugged in, or if the batteries are not accepting a charge, the charger may need to be replaced. Call Spectrum to help you decide if you need a new charger.

1. Remove the four screws holding the battery charger plate
2. Pull the charger plate off of the back of the Mopit
3. Disconnect the two wire connectors
4. Installation is the above steps in reverse
5. **HINT:** The wire connectors will only go on one way, you cannot get it wrong.



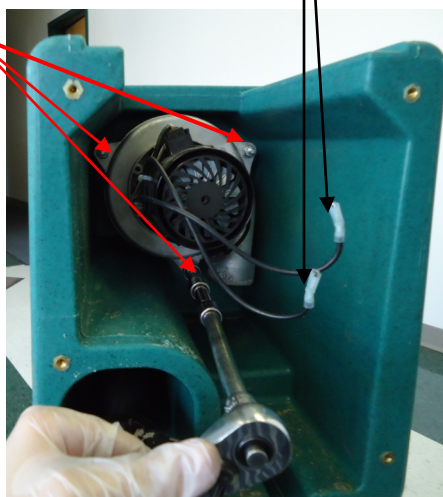
MAINTENANCE / SERVICE

Replacing The Vacuum Motor

Rarely the vacuum motor may need to be replaced. If the brush motor comes on but the vacuum motor does not come on, or if the motor sounds like it is making a grinding sound, you may need to replace your vacuum motor. Call Spectrum to help you determine if your vacuum motor needs to be replaced.

You will need a Phillips screwdriver, a ratchet, 2 ratchet extensions, and a 7/16 socket.

1. Follow the steps on page 17 to remove battery charge
2. Remove the 4 screws holding on the dash board plate. Disconnect the two electrical wires going to the vacuum. Remove the dash board plate and set it on the floor. **NOTE:** You do not need to remove any of the dash board wiring or the handle bar. Leave the wiring connected and set the plate on the floor behind the Mopit.
3. Using your ratchet and extensions, remove the three 7/16 nuts holding the vacuum motor in place
4. Pull the motor off of the studs
5. Installation is the above steps in reverse. **NOTE:** Ensure that the snorkel plate that sits between the vacuum motor and the plastic tank is centered with the vacuum motor.



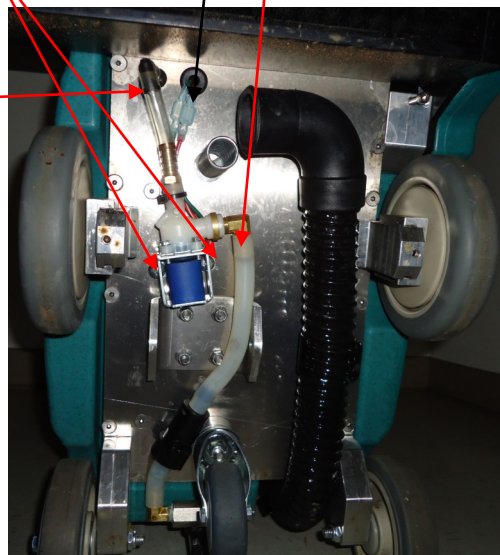
MAINTENANCE / SERVICE

Replacing The Water Solenoid

Rarely the water solenoid may need to be replaced. If your fresh water leaks out of the Mopit when not being used, or if no water will flow out of the Mopit even when the brush and solution switches are on, and the manual water valve is on (pg 6), you may need a new solenoid. You will need a Phillips screwdriver to replace the solenoid.

1. Follow steps on page 9 to remove squeegee assembly
2. Disconnect the two electrical plugs going to the solenoid
3. Shut off the manual water valve (pg 6)
4. Remove the white silicone hose going to the solenoid. You can simply pull it off with your fingers
5. Remove the two Phillips screws holding the solenoid to the base plate
6. Disconnect the clear tubing at the first elbow
7. Installation is the above steps in reverse.

HINT: If you cut the wire tie holding the solenoid wires to the solenoid, replace it.





Scan this QR code with your smart phone to watch how to clean the drip tray holes. You can view all of our Mopit movies on the “Mopit Channel” at www.youtube.com.

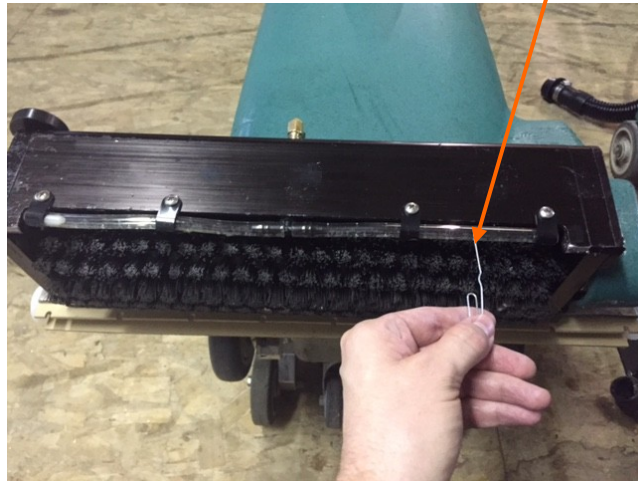
TROUBLESHOOTING

Water Is Spilling Over The Brush Hood

See water control valve (pg 6) and cleaning drip tray holes below.

Not Getting Any Water

Make sure the brush and solution switches are both on and the manual water valve (pg 6) is turned on. Check to make sure there is water in the fresh water tank. Every couple of months you may need to clean the drip holes in the drip tube. It is easiest to do with a paper clip. Check to make sure the water filter is clean; see page 8 on cleaning the water filter.



Mopit Batteries Not Charging

Call Spectrum for troubleshooting. Also see page 17 on charger replacement.

TROUBLESHOOTING

Mopit Is Leaving Black Marks

The most common cause is not getting water onto the floor. Black marks can also be caused by missing or worn squeegee wheels. See page 20 for how to fix water issues and page 9 for squeegee replacement.

Mopit Machine Smells When I Use It

The Mopit will stink when the recovery tank is not cleaned out regularly. See page 13 for how to clean the tank.

Mopit Machine Is Shocking Me When In Use

Shocking happens when no water is getting to the floor. The static electricity from the spinning brush causes the shocking. To fix this issue follow page 20 on not getting any water.

Mopit Machine Leaks When Not In Use

The most common cause for this is a faulty solenoid. Until we can get you a new solenoid simply turn off the manual water valve (pg 6) when the Mopit is not in use. Also see solenoid replacement (pg 19).

Mopit Not Cleaning Well

Several factors determine how the Mopit will clean.

1. **Water:** use hot water for best cleaning. If no water is getting on the floor or the water delivery is uneven, the cleaning will be poor. See page 20 Not Getting Any Water, to make sure water delivery is working
2. **Brush Pressure:** see adjusting and checking brush pressure (pg 10)
3. **Suction and water recovery:** If your machine is not sucking up the water well, see page 22 for help. You can also lift the squeegee to double scrub very dirty areas see page 7 (Squeegee Lift)
4. **Battery Charge:** If your battery is weak you won't have much suction or scrubbing power. See page 7 on battery charging
5. For more help call Spectrum 1-800-290-2833



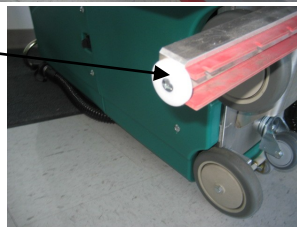
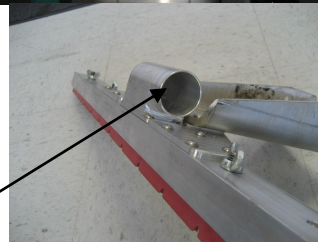
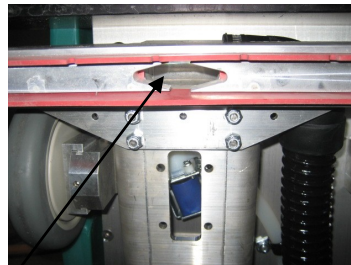
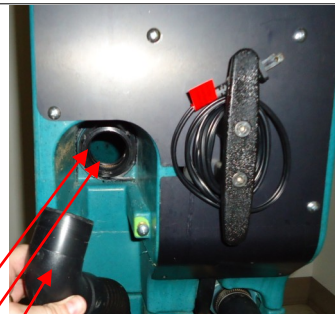
Scan this QR code with your smart phone to watch how to flush the squeegee hose. You can view all of our Mopit movies on the “Mopit Channel” at www.youtube.com.

TROUBLESHOOTING

My Mopit Is Not Picking Up Water

If the Mopit is not picking up water, there is an issue with the water recovery system. Here are the things to check:

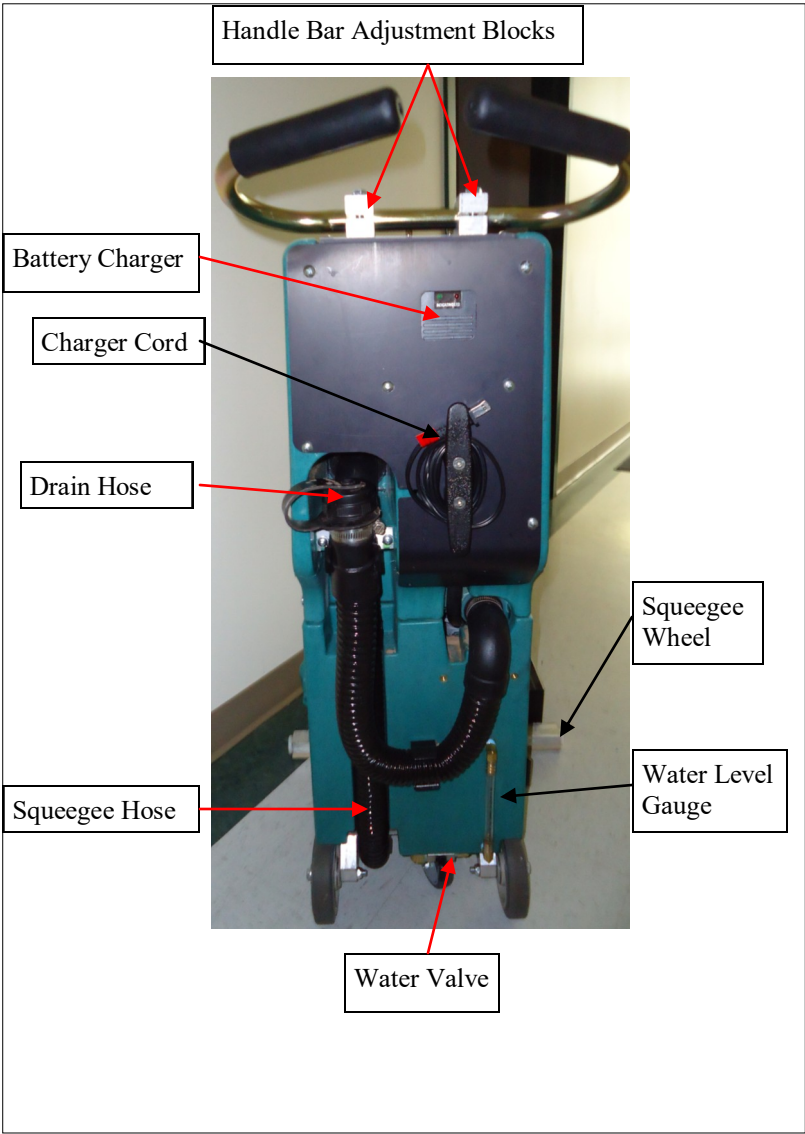
1. Make sure the squeegee lift is in the down position (pg 7)
2. Make sure the drain hose cap is screwed on tightly
3. Make sure the Squeegee hose is firmly inserted into the hose receiver
4. Check the recovery tube for obstructions
5. Flush water down the Squeegee hose to clear any clogs
6. Make sure the Recovery tank clean out cap is on (pg 13)
7. Make sure the Recovery tank is empty
8. Check the Vacuum ball screen inside the recovery tank. Make sure the ball inside the screen is at the bottom, not stuck in the top. If stuck, spray as shown on page 13
9. Check the Squeegee blades for wear and the squeegee hole for debris. Turn on the Vacuum switch and feel the squeegee hole for suction
10. Make sure the squeegee horn is clear
11. Make sure both squeegee wheels are on, and are not worn. The wheels should be replaced each time the squeegee is replaced. They are included in each squeegee replacement kit



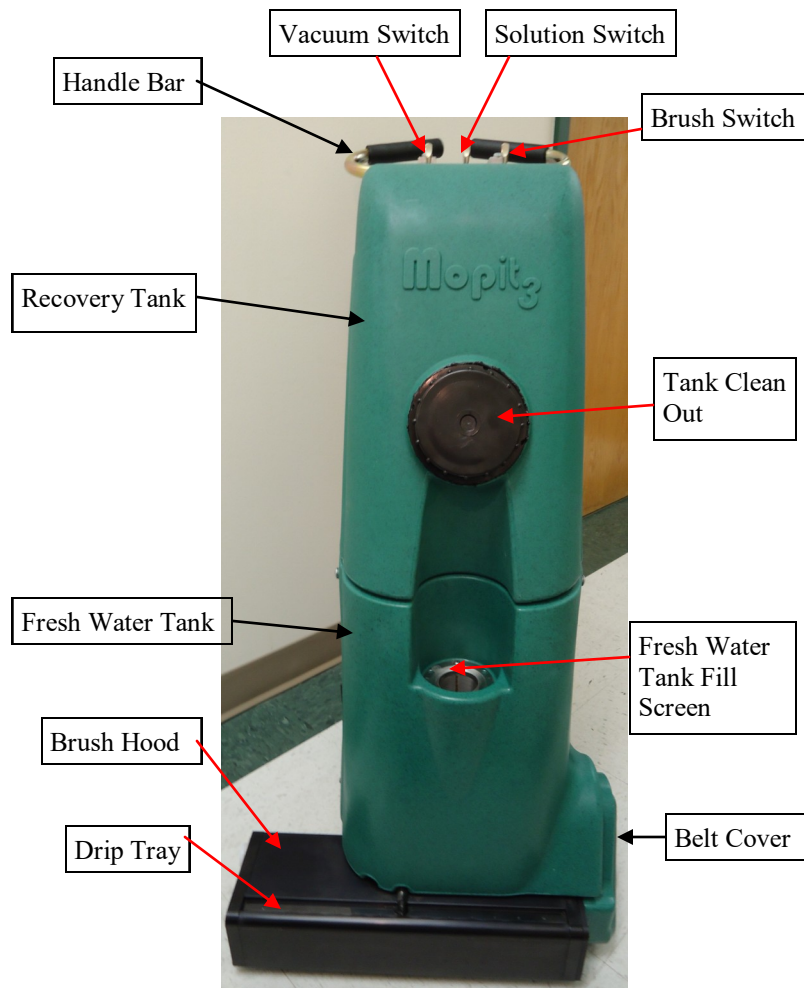


Scan this QR code with your smart phone to watch how to clean the squeegee horn. You can view all of our Mopit movies on the “Mopit Channel” at www.youtube.com.

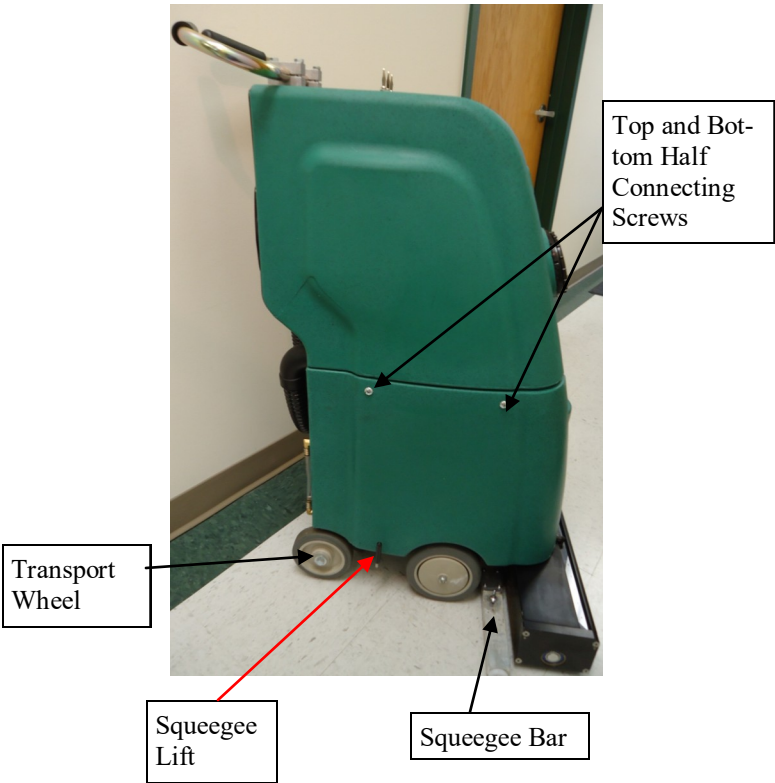
MOPIT 3.0 DIAGRAM



MOPIT 3.0 DIAGRAM



MOPIT 3.0 DIAGRAM



MOPIT MAINTENANCE SCHEDULE

SCAN THE QR CODES TO THE RIGHT WITH YOUR SMART PHONE TO WATCH HOW TO PERFORM EACH MAINTENANCE TASK

You can also view these videos by going to www.youtube.com and searching for "the mopit channel"

DAILY MAINTENANCE:

1. Drain the dirty water tank after each use. (PG. 6 *PAGE NUMBERS REFER TO THE OPERATORS / SERVICE MANUAL*)
2. Plug in the Mopit whenever it is not in use. (PG. 7)

WEEKLY MAINTENANCE

3. Clean out the recovery tank. (PG. 13)

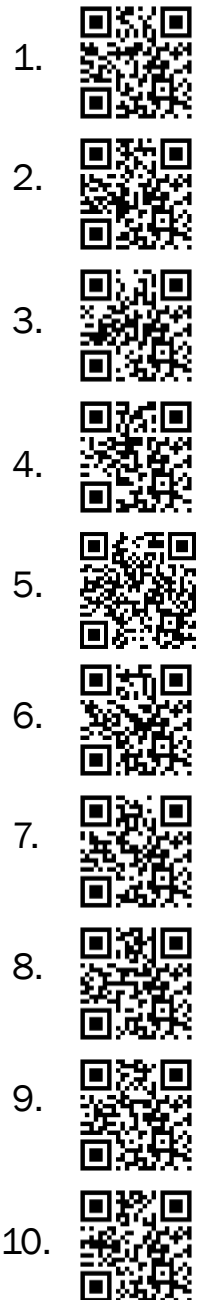
BI WEEKLY MAINTENANCE



4. Clean out the drip tray holes. (PG. 20)
5. Check the squeegee blade for wear. The squeegee should be replaced every 2-4 weeks of heavy use. (PG. 9)
6. Clean the fresh water filter. (PG. 8)

MONTHLY MAINTENANCE

7. Check the brush pressure. (PG. 10)
8. Flush the squeegee hose. (PG. 22)
9. Clean the squeegee horn. (PG. 22)
10. Clean the brush hood.

QR CODES





868 West 400 North
Logan, UT 84321
Phone: 1-800-290-2833
Fax: 435-753-1864

Email: mopit@mopit.com
Web: www.mopit.com

SPECTRUM