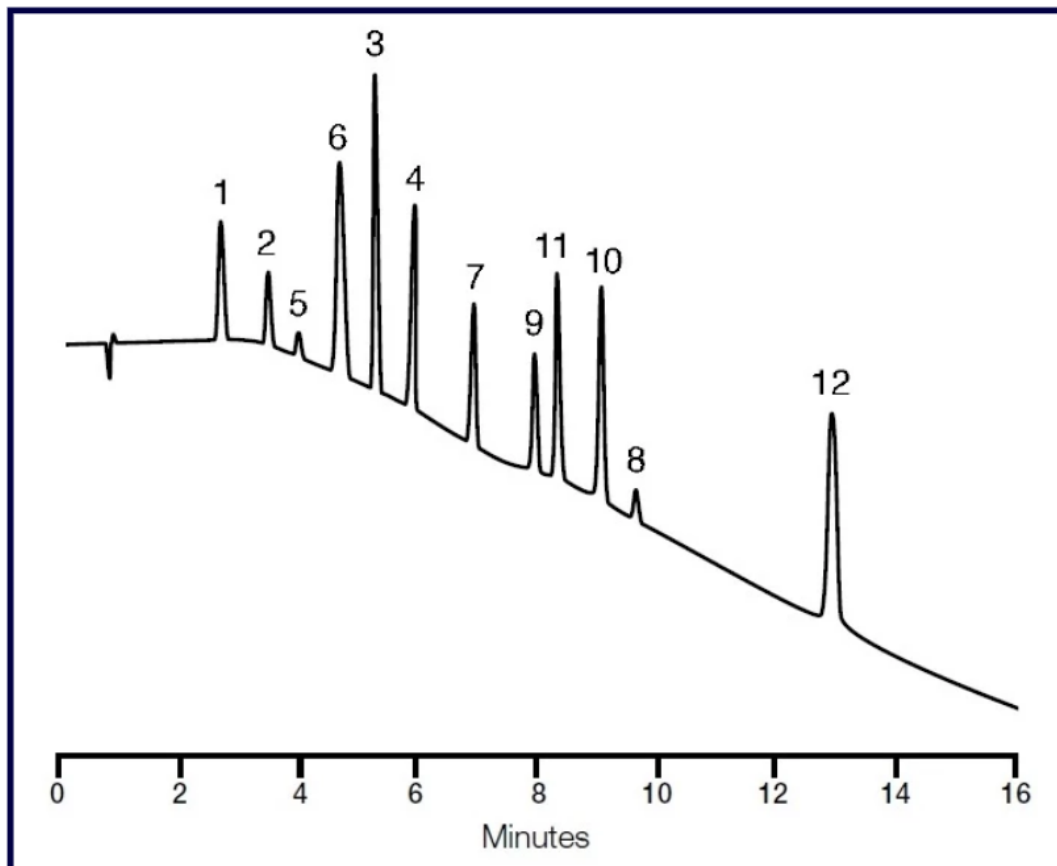


Test Mixture on PrincetonSFC 2CN:DIOL



Columns: PrincetonSFC 2CN:DIOL, 100 Å, 5 µm

Dimensions: 150 x 4.6 mm

Gradient:

0-1 min 5% CH₃OH (0.1% diethylamine),

1-18 min 5%-40% CH₃OH,

18-22 min 40% CH₃OH,

22-30 min - initial conditions

Flow Rate: 3 ml/min

Temperature: 40°C

Detection: UV at 254 nm

1. Caffeine
2. Theophylline
3. Thymine
4. Uracil
5. Fenoprofen
6. Flurbiprofen
7. Prednisone
8. Hypoxanthine
9. Hydrocortisone
10. Sulfamerazine
11. Sulfamethoxazole
12. Sulfaguanidine