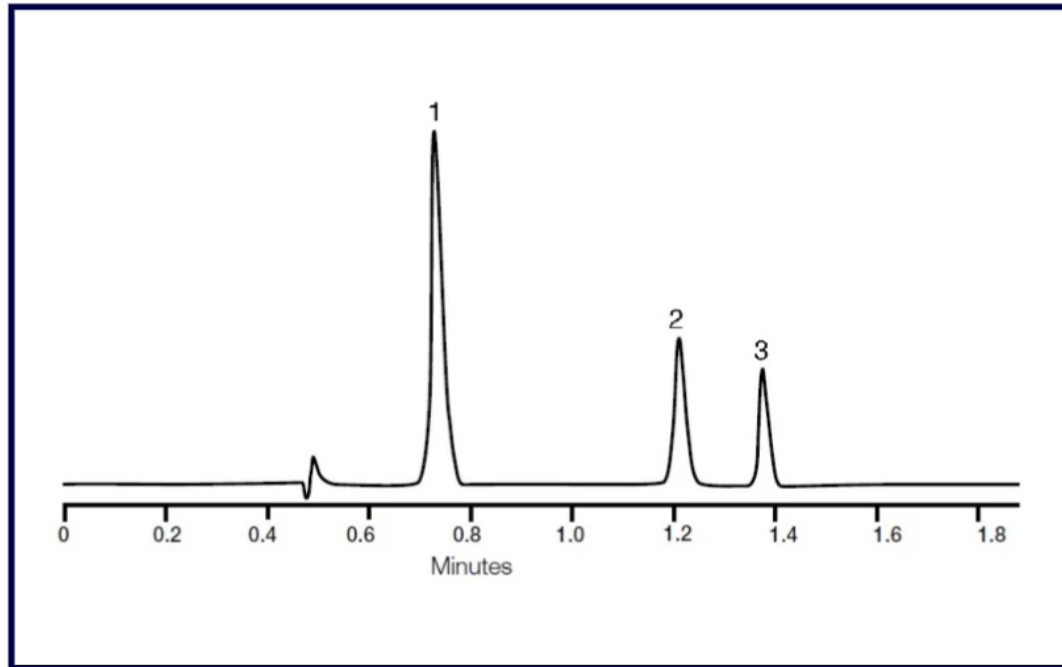


Separation of Pyridine Amides



Columns: PrincetonSFC 2-Ethylpyridine. 100 Å, 5 µm

Dimensions: 150 x 4.6 mm

Eluent: CO₂ - CH₃OH (85:15)

Flow Rate: 4.0 ml/min

Temperature: 40°C

Detection: UV at 220 nm

1. Picolinamide
2. Niacinamide
3. Isonicotinamide