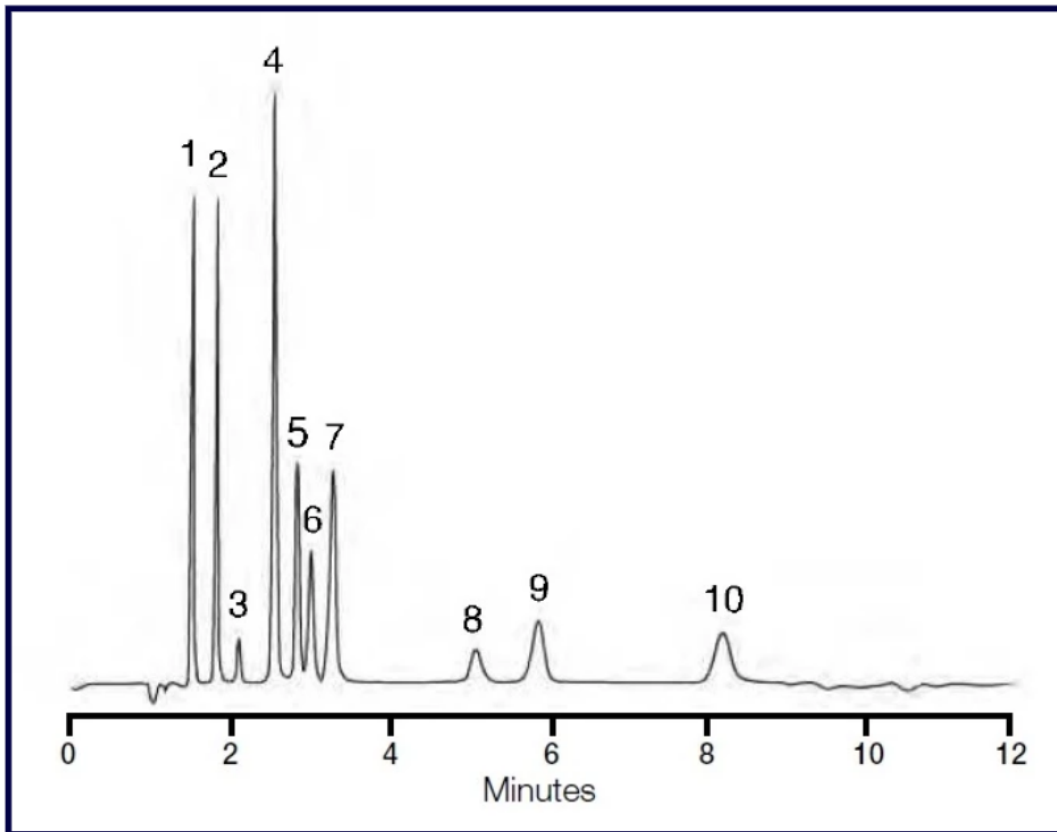


SFC Separation of Test Compounds on PrincetonSFC Methane Sulfonamide



Columns: PrincetonSFC Methane Sulfonamide, 5 μ m

Dimensions: 250 x 4.6 mm

Eluent: CO₂ - CH₃OH (60:40)

Additive: 0.2% diethylamine

Flow Rate: 2.35 ml/min

Detection: UV at 254 nm

1. Caffeine
2. Theophylline
3. Theobromine
4. Thymine
5. Uracil
6. 5-Fluorouracil
7. Adenine
8. Hypoxanthine
9. 5-Fluorocytosine
10. Cytosine