

Wonderland by Day



Quilt size: Approx. 56" x 78"

A free project using Wonderland by Day® fabrics from Sykel Enterprises

www.sykelenterprises.com

Supplies Needed:

- *Yardage listed for each print
- *5-1/3 yards backing of choice
- *64" x 86" quilt batting



2/3 yd. FABRIC A: PATT#10499 - Wonderland by Day panel
Cut panel 19-1/2" x 38-1/2" with center motif centered



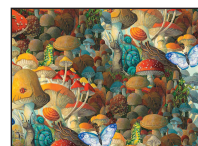
1/3 yd. FABRIC B: PATT#10500 - Allover
Cut (1) 6-1/2" x WOF (width of fabric), subcut
(4) 6" wide x 6-1/2" pieces



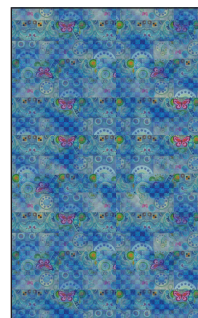
1 yd. FABRIC C: PATT#10501 - Balloons
Cut (2) 10-1/2" x WOF strips, subcut
(10) 4" x 10-1/2" tall pieces
Cut (2) 4" x WOF strips, subcut (6) 4" tall x 10-1/2"
pieces (2) 4" tall x 9-1/2" pieces



1-1/3 yds. FABRIC D: PATT#10502 - Floral Patch
Cut (2) 3-3/4" x 40-1/2" LOF (length of fabric) borders
From remaining width of fabric;
Cut (3) 4-3/4" strips, subcut (17) 4-3/4" squares
Cut (3) 4" strips, from 1 strip subcut (6) 4" x 4-1/2"
pieces and (1) 4" square
Cut (2) 3-1/2" strips, subcut (10) 3-1/2" x 4" pieces



1 yd. FABRIC E: PATT#10504 - Frogs
Cut (4) 2" x LOF (length of fabric) borders
Cut (3) 2" x remaining width of fabric strips

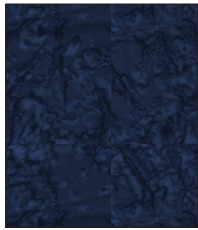


2 yds. FABRIC F: PATT#10505 - Abstract Blue Check
Cut (7) 2-1/2" x WOF strips
Cut (8) 2-1/2" x WOF strips (binding)
Cut (3) 2-1/2" x WOF strips, sewn together end to end
and cut into (2) 2-1/2" x 56-1/2" borders
Cut (4) 2" x WOF strips, sewn together end to end
and cut into (2) 2" x 74-1/2" borders
Cut (2) 2" x WOF strips



5/8 yd. FABRIC G: PATT#5174 - Dk. Olive Batik
Cut (3) 4-3/4" strips, subcut (17) 4-3/4" squares

Cutting continued on Page 2.



5/8 yd. FABRIC H: PATT#5174 - Navy Batik
 Cut (9) 1-1/2" x WOF strips, sewn together end to end and cut into (2) 1-1/2" x 72-1/2"; (2) 1-1/2" x 59-1/2"; (2) 1-1/2" x 53-1/2" borders
 Cut (2) 1-1/2" x WOF strips, subcut (2) 1-1/2" x 40-1/2" borders



1 yd. FABRIC I: PATT#5174 - Purple Batik
 Cut (7) 2-1/2" x WOF strips
 Cut (2) 2" x WOF strips
 Cut (6) 1" x WOF strips, sewn together end to end and cut into (2) 1" x 64-1/2" and (2) 1" x 44-1/2" borders



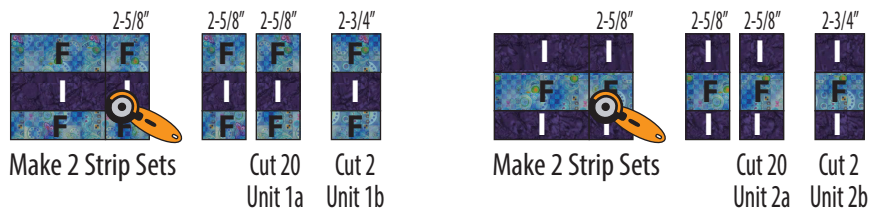
1/4 yd. FABRIC J: PATT#5174 - Turquoise Batik
 Cut (2) 1-1/2" x WOF strips
 Cut (2) 1-1/4" x WOF strips

Piecing the Bordered Panel:

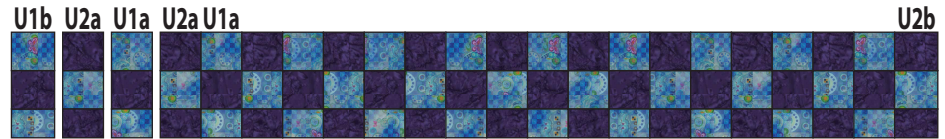
1. Referring to Quilt Layout sew **Fabric J** 1-1/4" x WOF strips to right and left sides of **Fabric A** panel. Trim strip ends even. Add **Fabric J** 1-1/2" x WOF strips to top and bottom. Trim strip ends even.
2. Stitch **Fabric D** 3-3/4" x 40-1/2" LOF borders to right and left sides of bordered panel. Add **Fabric D** 4" x 27-1/2" strips to top and bottom of quilt. Trim strip ends even.

Piecing the Checkered Board Border:

1. Stitch a **Fabric I** 2-1/2" x WOF strip between a **Fabric F** 2-1/2" x WOF" strip and a **Fabric F** 2" x WOF strip. Make a second identical strip set. From these strip sets, cut (20) 2-5/8" wide Unit 1a (2-5/8" x 6" unfinished) and (2) 2-3/4" wide Unit 1b (2-3/4" x 6" unfinished). In the same manner, make 2 **I/F/I** strip sets and cut (20) 2-5/8" wide Unit 2a (2-5/8" x 6" unfinished) and (2) 2-3/4" wide Unit 2b (2-3/4" x 6" unfinished).

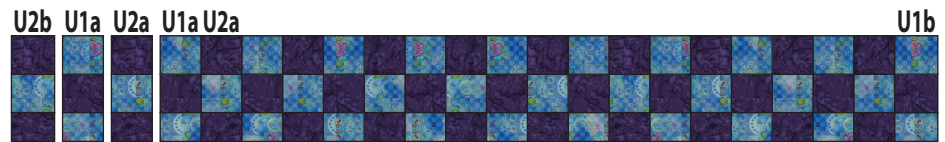


2. Arrange 10 each Units 2a and 1a alternating in a row as shown. Stitch units together. Add 1 each Units 1b and 2b to ends as shown to complete left checkerboard border (6" x 47-1/2" unfinished). Sew to left side of bordered panel.



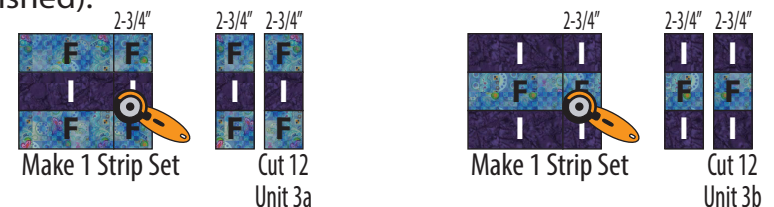
Make (1) Left Border

3. Arrange 10 each Units 1a and 2a alternating in a row as shown. Stitch units together. Add 1 each Units 2b and 1b to ends as shown to complete right checkerboard border (6" x 47-1/2" unfinished). Sew to right side of bordered panel.

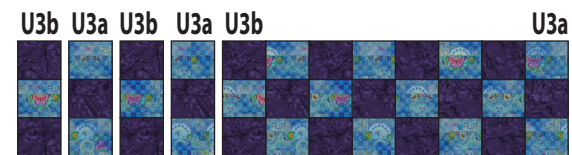


Make (1) Right Border

4. Stitch a **Fabric I** 2-1/2" x WOF strip between 2 **Fabric F** 2-1/2" x WOF strips. From this strip set, cut (12) 2-3/4" wide Unit 3a (2-3/4" x 6-1/2" unfinished). In the same manner, make 1 **I/F/I** strip set and cut (12) 2-3/4" wide Unit 3b (2-3/4" x 6-1/2" unfinished).

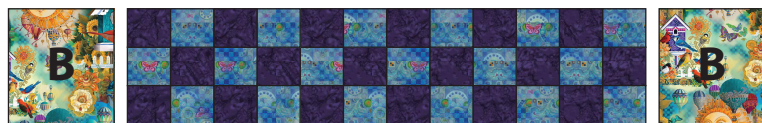


5. Arrange 6 each Units 3a and 3b alternating in a row as shown. Stitch units together. Repeat to make a second top/bottom checkerboard bottom (6-1/2" x 27-1/2" unfinished).

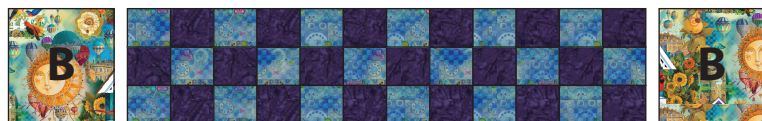


Make (2) Top/Bottom Checkerboard Borders

6. Stitch a **Fabric B** 6" x 6-1/2" piece to short ends of each top/bottom checkerboard borders to make 1 each top border and bottom border (6-1/2" x 38-1/2" unfinished). Sew top and bottom borders to bordered panel with side checkered borders.



Make (1) Top Border



Make (1) Bottom Border

Outer Borders:

1. Stitch **Fabric H** 1-1/2" x 59-1/2" borders to right and left sides of quilt. Add **Fabric H** 1-1/2" x 40-1/2" borders to top and bottom of quilt.

2. Stitch **Fabric E** 2" LOF strips together end to end and cut into (2) 2" x 61-1/2" borders then sew to right and left sides of quilt. Stitch **Fabric E** 2" x WOF strips together end to end and cut into (2) 2" x 43-1/2" borders then stitch to top and bottom of quilt.

3. Stitch **Fabric I** 1" x 64-1/2" borders to right and left sides of quilt. Add **Fabric I** 1" x 44-1/2" borders to top and bottom of quilt.

4. On the wrong side of all **Fabric G** 4-3/4" squares, draw a diagonal line from corner to corner. Draw 2 lines 1/4" on each side of first line.



5. Arrange a marked **Fabric G** 4-3/4" square right sides together with a **Fabric D** 4-3/4" square aligning all edges. Stitch along the 2 outside lines. Cut along the center line. Make a total of 34 Unit 4. If needed, center seam and trim each to 4" square.



Repeat 17 times for 34 units.



Unit 4
Make 34

6. Draw a diagonal line, perpendicular to the seam, across the wrong side of each Unit 4.



7. Arrange 2 marked Unit 4 right sides together on a **Fabric C** 4" x 10-1/2" tall piece as shown. Stitch along marked lines. Trim seam allowances to 1/4". Press corners out. Make a total of 5 Unit 5a (4" x 10-1/2" unfinished). In the same manner, make 4 Unit 5b, noting orientation of prints in the added corner triangles and 1 Unit 5c adding triangles to only the top right corner as shown.



Unit 5a
Make 5

Unit 5b
Make 4

Unit 5c
Make 1

8. In the same manner, arrange 2 marked Unit 4 right sides together on a **Fabric C** 4" tall x 9-1/2" piece. Stitch along marked lines, trim, and press corners out to complete 1 Unit 6a (4" x 9-1/2" unfinished).



Unit 6a - Make 1

9. In the same manner, arrange 2 marked Unit 4 right sides together on a **Fabric C** 4" tall x 10-1/2" piece. Stitch along marked lines, trim, and press corners out. Make 2 Unit 6b (4" x 10-1/2" unfinished).



Unit 6b - Make 2

10. In the same manner, arrange 2 marked Unit 4 right sides together on a **Fabric C** 4" tall x 10-1/2" piece. Stitch along marked lines, trim, and press corners out to complete 1 Unit 6c (4" x 10-1/2" unfinished).



Unit 6c - Make 1

11. In the same manner, arrange 2 marked Unit 4 right sides together on a **Fabric C** 4" tall x 10-1/2" piece. Stitch along marked lines, trim, and press corners out. Make 2 Unit 6d (4" x 10-1/2" unfinished).



Unit 6d - Make 2

12. In the same manner, arrange 2 marked Unit 4 right sides together on a **Fabric C** 4" tall x 9-1/2" piece. Stitch along marked lines, trim, and press corners out to complete 1 Unit 6e (4" x 9-1/2" unfinished).



Unit 6e - Make 1

13. 14. Draw a diagonal line across the wrong side of a **Fabric D** 4" square. Using the same stitch and flip technique to add corner triangles, arrange the marked **Fabric D** 4" square right sides together on left edge of the **Fabric C** piece in Unit 6f. Stitch along marked line, trim, and press corner out to complete 1 Unit 7 (4" x 10-1/2" unfinished).



Unit 7 - Make 1

14. Arrange 5 **Fabric D** 3-1/2" x 4" pieces alternating with 5 Unit 5a in a vertical row on left side of quilt. Refer to Quilt Layout for arrangement of pieces and units in this border. Stitch into left border (4" x 65-1/2" unfinished). Stitch to left side of quilt.

15. Arrange 5 **Fabric D** 3-1/2" x 4" pieces alternating with 4 Unit 5b in a vertical row on left side of quilt. Add Unit 5c to the bottom of border. Refer to Quilt Layout for arrangement of pieces and units in this border. Stitch into right border (4" x 65-1/2" unfinished). Stitch to right side of quilt.

16. Arrange 3 **Fabric D** 4" x 4-1/2" pieces alternating with 2 Unit 6b in a horizontal row above quilt. Add Unit 6a on left end and Unit 6c on right end. Refer to Quilt Layout for arrangement of pieces and units in this border. Stitch into top border (4" x 51-1/2" unfinished). Stitch to top of quilt.

17. Arrange 3 **Fabric D** 4" x 4-1/2" pieces alternating with 2 Unit 6d in a horizontal row below quilt. Add Unit 7 on left end and Unit 6e on right end. Refer to Quilt Layout for arrangement of pieces and units in this border. Stitch into bottom border (4" x 51-1/2" unfinished). Stitch to bottom of quilt.

18. Stitch **Fabric H** 1-1/2" x 72-1/2" borders to right and left sides of quilt. Add **Fabric H** 1-1/2" x 53-1/2" borders to top and bottom of quilt.

19. Stitch **Fabric F** 2" x 74-1/2" LOF borders to right and left sides of quilt. Add **Fabric F** 2-1/2" x 56-1/2" borders to top and bottom of quilt.

20. Quilt top measures 56-1/2" x 78-1/2" (unfinished)

Finishing:

1. Cut backing into 2 equal lengths. Sew backing pieces together along their selvage edges.
2. Layer backing, right side down, batting, then quilt top, right side up. Baste layers together. Quilt as desired. Trim excess batting and backing even with quilt top.
3. Stitch **Fabric F** binding strips together with diagonal seams. Press binding strip in half lengthwise and apply to quilt.

Wonderland by Day Quilt Layout

