

# PEARL PIGMENT CATALOG

SHOWCASING THE FINEST  
AUTOMOTIVE , INDUSTRIAL  
AND COSMETIC GRADE  
PEARL PIGMENTS



# KP

**KP PIGMENTS**

**2019**  
**ISSUE**

# TABLE OF CONTENTS

Welcome to our Pearl Pigment Catalog!

In the next several pages you'll find one of the largest selections of high quality pearl pigments on the market. Before we get into that as strangers however, we'd like for you to get to know us a tad bit better.

KP Pigments was first started as a way to better serve the automotive customization market in terms of paint finishes and colors after being unhappy with most of the lack luster options available. Our market share quickly grew past the automotive industry and now KP Pigments proudly serves countless industries in dozens of countries all over the globe.

Our mission statement has always remained the same: create a better way to shop for pearlescent, metallic and effect pigments with a strong focus on customer service and technical support, while offering one of the largest selections of pigments. This dedication to servicing our customer base has allowed us to secure contracts with many large scale industrial, cosmetic and automotive OEM's all over the globe and is a constant driving factor for our company and our employees.

KP Pigments is currently headquartered in Long Island, New York and has manufacturing facilities both domestically and abroad. We also boast FDA and REACH certifications for a majority of our pigment line up.

Please feel free to drop us a line and ask how KP Pigments can better serve your companies pigment needs.

Now let's get into the fun stuff!

## WHAT ARE PEARL PIGMENTS?

### SOLID PEARLS

SINGLE AND SOLID COLOR PEARLESCENT PIGMENTS

### INTERFERENCE PEARLS

EFFECT PIGMENTS OFFERING A VARIETY OF IRIDESCENT COLORS AND FINISHES

### CARBON PEARLS

HIGHLY METALLIC AND BOLD SOLID PEARL PIGMENTS

### OEM+ PEARLS

SOLID COLORS WITH A SUBTLE HOLOGRAPHIC EFFECT

### COLORSHIFT PEARLS

OPTICALLY VARIABLE (COLOR CHANGING) EFFECT PIGMENTS

### HYPERSHIFT PEARLS

THE MOST VIVID AND HARDEST SHIFTING PEARLS ON THE MARKET. MANY HYPERSHIFTS CAN SHOW 5-6 DIFFERENT COLORS BASED ON VIEWING ANGLE.



04  
11  
17  
19  
20  
21  
26



**KP PIGMENTS**

**KP PIGMENTS  
66 RANDALL AVENUE  
SUITE #2**

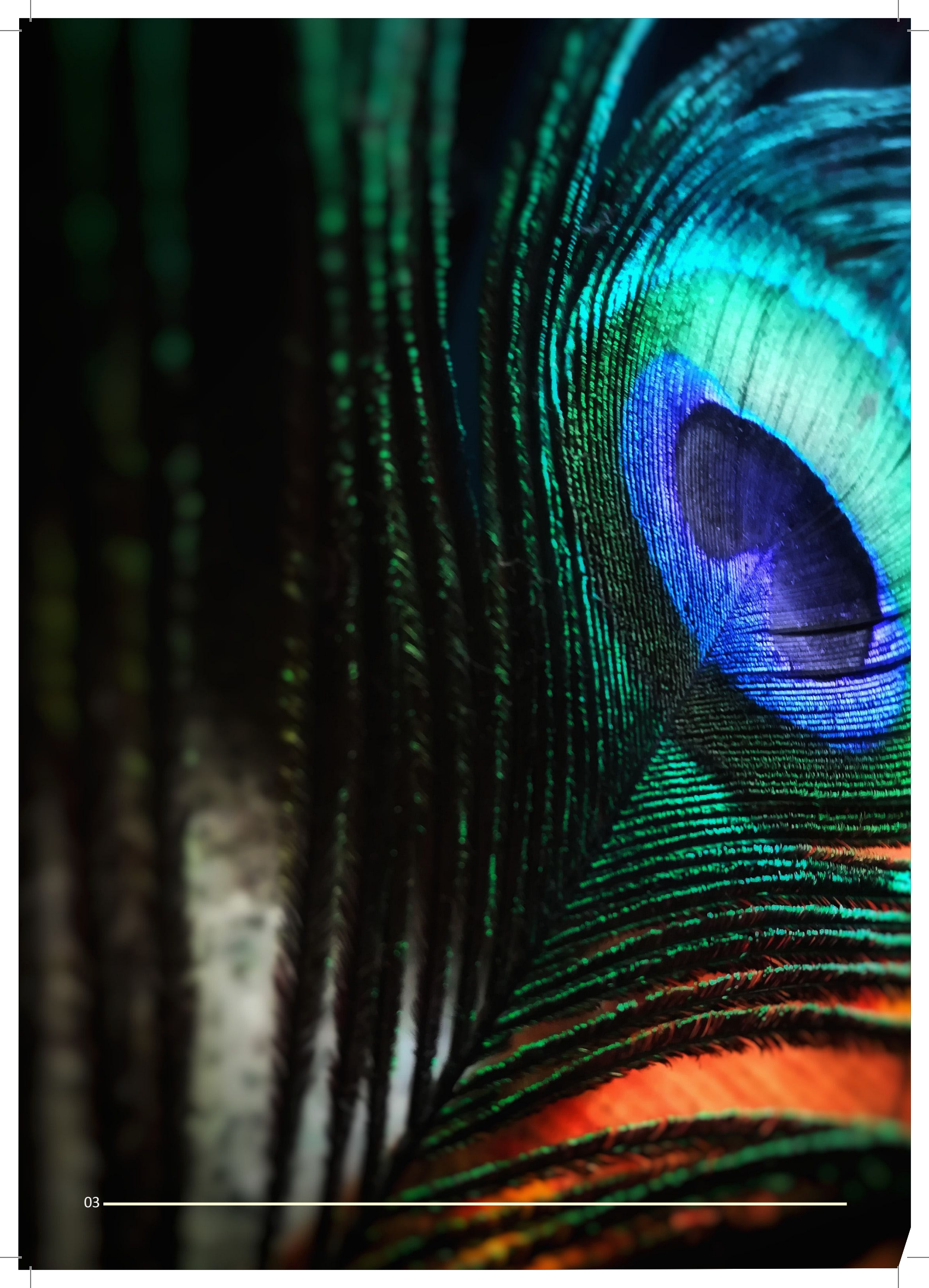
**ROCKVILLE CENTRE, NY 11570**

**PHONE: (516) 705-4389**

**E-MAIL: [INFO@KPPIGMENTS.COM](mailto:INFO@KPPIGMENTS.COM)**

**WEBSITE: [WWW.KPPIGMENTS.COM](http://WWW.KPPIGMENTS.COM)**









# WHAT ARE PEARL PIGMENTS?

Pearl pigments are very fine inorganic and organic pigments that come in an almost endless array of metallic, interference and pearlescent colors. They can be used in almost any sort of medium, or even used dry as long as they are glazed or cleared over. Some uses for pearl pigments include: automotive coatings, glues, acrylic paints, gels and varnishes, clear resins, nail polish and eye shadow, watercolors, screen printing and other types of inks, fabric paints, masterbatches and even glass and plastic production.

Pearl pigments are usually mica or silica based powdered color additives that are coated with metal oxides and are non-toxic and inert. Since they contain no actual metal like some other pigments, they will never rust or tarnish.

The variety of finishes pearls can produce is nearly endless—from intense metallic sparkles to pearlescent shimmers and all manners of faux finishes.

Since most pearl pigments are semi-transparent, you can also use different colored base coats as well as different pearl loading and mixing ratios to create even more unique and customized colors. This process works extremely well with our interference and ColorShift pearls, which change color and hue based on viewing angle resulting in continuously changing colors!





## PAINT APPLICATION:

All of our pigments are physically stable and can be used in both solvent based and water based paint systems as well as powder coating. To create a pearlescent paint, simply mix the correct amount of pearl pigment into the clear substrate of your choice. Take a look at the table on the right for general guidelines for mixing our pearls with paint.

Paint Type	Concentration (%)
Automotive*	5-10
Architectural	5-10
Powder Coatings	2-7
Plastics	5-10
Epoxy/Resin	5-10

**NOTE:** This is just a general guideline and there are no rules when mixing pearl pigments into paints.

\*For automotive coatings we generally suggest 25 grams per quart and for peelable automotive coatings, 50 or 75 grams per gallon.

## PRINTING INK APPLICATION:

Pearl pigments can be used the same way as conventional pigments for printing inks. Depending on the individual printing process and preferences, there are many different finishes and effects to choose from according to particle size range and color. Pearl inks can be easily prepared, by mixing pearl pigments into any ink medium.



## MIXING RATIOS:

The concentration of pearl pigments in ink mediums depends on the printing process and article being printed. On the right are some general guidelines.

Ink Type	Concentration (%)
Screen Ink	5-20
Gravure Ink	10-20
Off-set Ink	30

**NOTE:** Pre-dispersing the pigments with a small amount of binder or ink medium generally causes better dispersion and a more even finish.



## **PAPER APPLICATION:**

Pearl pigments can also be used in many kinds of coated and specialty paper, such as advertisements, greeting cards, calendar paper, wallpaper, and any kind of pearl luster packing paper. Pearlescent effects of just about any color imaginable are achievable.

---

## **LEATHER APPLICATION:**

Pearl pigments can also efficiently be applied to genuine leathers, and PU/PVC synthetic leathers. These pigments can be directly blended into the inks used for printing on leather surfaces. Finally, pearl pigments can even be added directly into transparent plastic resins to use for rolling and scraping production, as well as any other plastic production process.



# MAIN FEATURES, BENEFITS & USES

## OF KP PIGMENTS' PEARL PIGMENTS:

- CUSTOMER SERVICE - KP Pigments prides itself on providing the utmost professional and personal service to all our customers. No project or customer is too big or small for our one-on-one support and advice on your pigment needs.
- They can be used in the finishing process of all types of materials, including automotive, printing products, plastics and leathers.
- They can be easily mixed into any clear substrate to be used with printing inks and coatings.
- Very stable properties for use in packaging and printing as they do not singe or migrate.
- They are environmentally friendly and thus pose no problem with regard to waste disposal.
- They are neutral in landfills since mineral pigments are insoluble in water and in solvents, and do not decompose.
- They are chemically neutral.
- They produce no odor.
- They are stable up to temperatures of 450°C to 800°C.
- They are physiologically harmless; since they do not trigger toxic reactions, they are completely safe for use in food packaging.
- They meet United States FDA and European REACH Standards.
- They contain no metal: the metal oxide used to coat the substrate has already been oxidized so there is no risk of a reaction with oxygen. The pigments are therefore eminently suitable in cases where electrical conductivity during use is not desirable or where metal may not be used for legislative reasons.



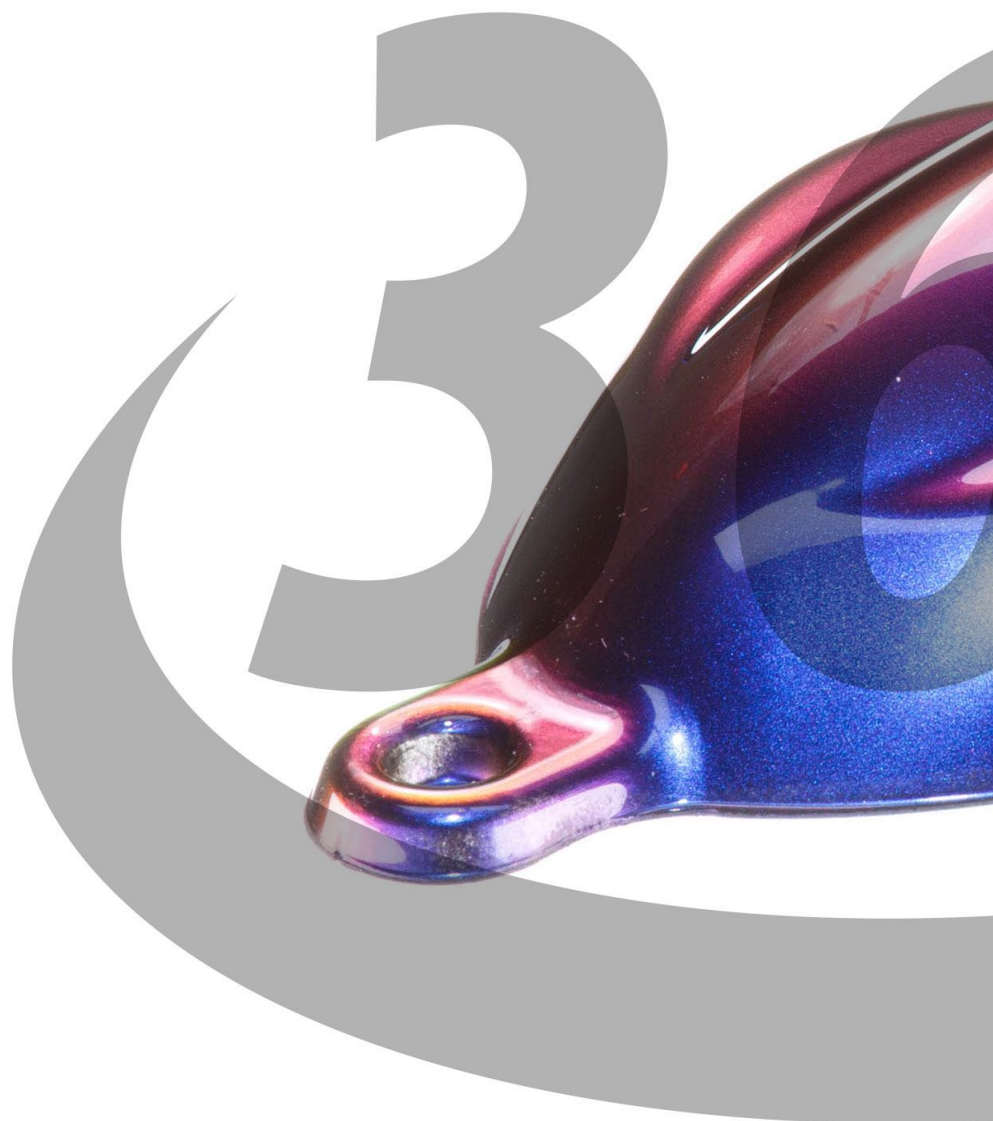






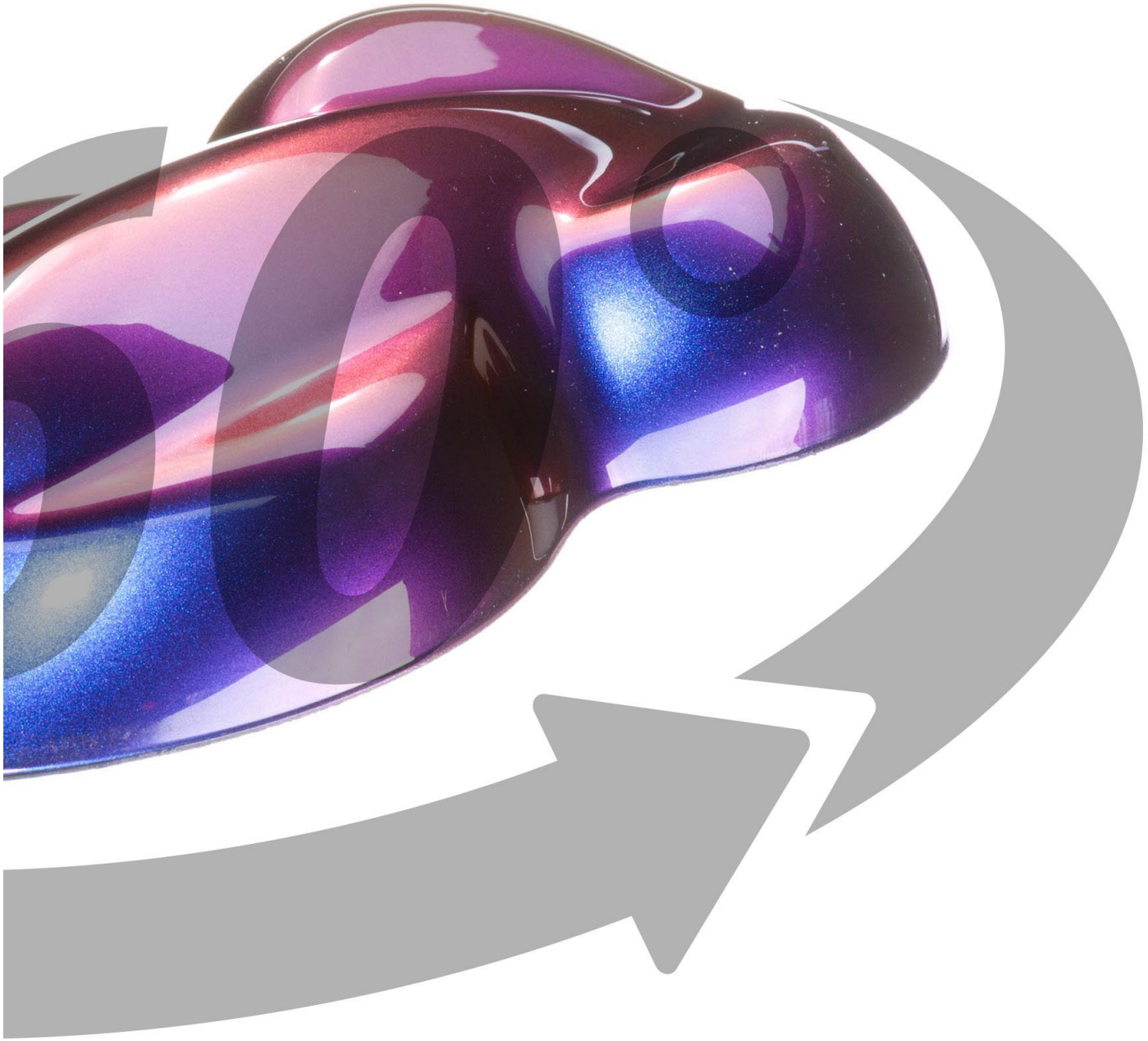
**WANT TO SEE  
INTERACTIVE 360 VIEWS  
OF ALL OUR COLORS?**

**Visit our website at:  
[www.KPpigments.com](http://www.KPpigments.com)**



Please note: images on the website as well as color chips may differ from your end result depending on variables such as: pigment loading, basecoat, substrate and monitor.







# SOLID PEARLS

**SINGLE AND SOLID COLOR PEARLESCENT PIGMENTS**



24 Karat Gold  
10-60µm



Adamantium  
10-60µm



Amber Yellow  
10-60µm



Aurum Dust  
10-60µm



Balloon White  
10-60µm



Black Cherry  
10-60µm



Blue Dream  
10-60µm

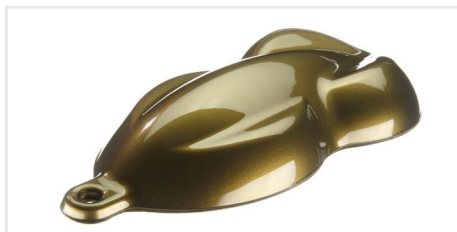


Blurple  
10-60µm



Bordeaux  
10-60µm





Brass Knuckles  
10-60µm



Brilliant Bronze  
5-25µm



Bronzite Metal Pearl  
5-25µm



Brooklyn Gold  
10-100µm



Burnt Orange  
10-60µm



Cali Purple  
10-60µm



Canyon  
10-60µm



Cavalier Bronze  
10-100µm



Coral Green  
10-60 µm



Corona Yellow  
10-60µm



Cotton Candy Blue  
10-100µm



Deep Sea Blue  
10-60µm



Double Shot Espresso  
10-60µm



Electric Blurple  
10-60µm



English Lavender  
10-60µm



Flamingo  
10-60µm



Galapagos Green  
10-60µm



Gandom  
30-80µm





Grape Soda  
10-60µm



Green Lantern  
10-60µm



Gulf Blue  
10-60µm



Himalayan White  
<15µm



HKS Purple  
10-60µm



Hot Pink  
10-60µm



Hyper Black  
10-60µm



Hyper Silver  
10-60µm



Iguana Green  
10-60µm



Kopi  
10-60µm



Laver  
10-60µm



Liberty Copper Metal Pearl  
10-100µm



Mariana Blue  
10-60µm



Medium Rare  
10-60µm



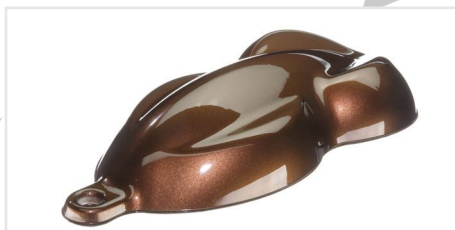
Merlot Red  
10-60µm



Miami Sunset  
10-60µm



Mineral Glacier  
10-100µm



Mocha Brown  
10-60µm





Moissanite  
40-200µm



Mojave  
10-60µm



Moonstone Pink  
10-60µm



Moss Green  
10-60µm



Mulberry  
10-60µm



Muscadine  
10-60µm



Mystic Green  
10-60µm



Nebula Blue  
10-100 µm



Nebula Green  
10-60µm



Nebula Purple  
10-60µm



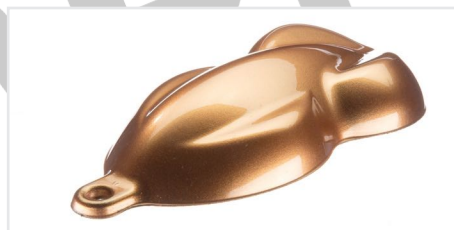
Nebula Red  
5-60µm



Nebula Yellow  
10-60µm



Nighthawk Black  
10-60µm



Nixon Gold Metal Pearl  
10-100µm



Ocean Blue  
10-60 µm



Penny Copper  
10-30µm



Peppermint  
10-60µm



Peridot  
10-80 µm





Phantom Red  
10-60µm



Pink Lemonade  
10-60 µm



Polaris Fluorescent Yellow  
(non-metallic) <15µm



PurPlue  
10-60µm



Radiant Red  
20-100µm



Radioactive Green  
10-100µm



Raw Titanium  
10-100µm



Real Red  
10-60 µm



Red Rum  
10-60µm



Rhino  
10-60µm



Ron Burgundy  
10-60µm



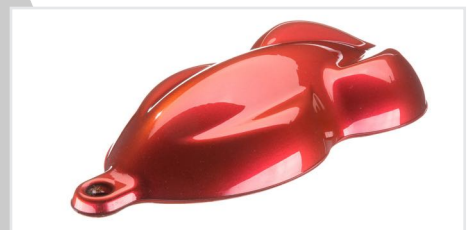
Rose Copper  
10-60µm



Royal Gold  
10-60µm



Ruby Red Metal Pearl  
10-100µm



Sakhir Red  
5-50µm



Sapphire Blue  
10-60µm



Saturn Yellow  
10-60µm



Sazuka Blue  
10-60µm



Seafoam Green  
10-60µm



Slipstream Punisher  
10-60µm



Solar Flare  
10-60µm



Sparkling Graphite  
10-60µm



Sprint Blue  
10-60µm



Stainless Steel Metal Pearl  
30-150µm



Stark Red Metal Pearl  
10-100µm



Steel Blue  
10-60 µm



Summer Peach  
10-60µm



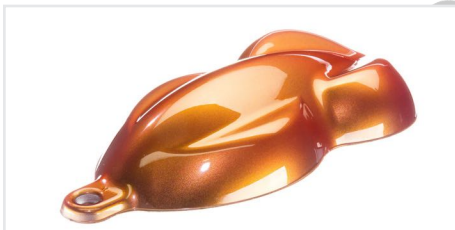
Sunshine Gold  
10-100µm



Swamp Land Green  
10-60µm



Tahitian Green  
10-60µm



Tangerine Sky  
10-60µm



Techno Purple  
10-60µm



Tiff Blue  
10-100µm



Top Secret Gold  
5-25 µm



Tupelo  
10-80µm



Tuzi Indigo  
10-60 µm





Underground Punisher  
10-60  $\mu\text{m}$



Wild Rose  
10-60 $\mu\text{m}$



World Rally Blue  
10-60 $\mu\text{m}$



Wu-Tang Yellow  
10-100  $\mu\text{m}$



Yas Marina Blue  
10-100 $\mu\text{m}$



Yellow Submarine  
10-100 $\mu\text{m}$

# INTERFERENCE PEARLS

EFFECT PIGMENTS OFFERING A VARIETY OF  
IRIDESCENT COLORS AND FINISHES



Abalone  
10-45µm



Dove Blue  
40-200µm



Gremlin Green  
40-200µm



Hawaiian Coral  
50-250 µm



Iceberg Blue  
20-100µm



Interference Gold  
10-100µm



Interference Green  
10-100µm



Interference Purple  
10-60µm



Interference Blue  
10-60µm



Martian Green  
50-200µm



Martian Red  
50-200µm



Martian Violet  
20-200µm



Prometheus Purple  
40-200µm



# CARBON PEARLS

HIGHLY METALLIC AND BOLD  
SOLID PEARL PIGMENTS



Carbon Blue  
30-60 $\mu$ m



Carbon Bronze  
50-80 $\mu$ m



Carbon Gold  
50-80 $\mu$ m



Carbon Green  
50-80 $\mu$ m



Carbon Lava  
10-60 $\mu$ m



Carbon Orange  
30-60 $\mu$ m



Carbon Red  
10-60 $\mu$ m



Carbon Silver  
15-45 $\mu$ m



# OEM + PEARLS

**SOLID COLORS WITH A SUBTLE  
HOLOGRAPHIC EFFECT**



Canary Yellow OEM+  
10-60µm



Cardinal Red OEM+  
10-60µm



Concord Purple OEM+  
10-60µm



Egyptian Blue OEM+  
10-60µm



French Blue OEM+  
10-100µm



Imperial Purple OEM+  
10-60µm



Obsidian Black OEM+  
10-60µm



Porcelain White OEM+  
5-60µm



Racing Green OEM+  
10-60µm





Sandstone OEM+  
10-60µm



Terra Orange OEM+  
10-60µm



Topaz Blue OEM+  
10-60µm

A close-up photograph of a green iguana's head and neck, showing its scales which exhibit iridescent colors like purple, blue, and green, illustrating the effect of the pigments.

# COLORSHIFT PEARLS

**OPTICALLY VARIABLE (COLOR CHANGING)  
EFFECT PIGMENTS**



Aegean ColorShift  
10-60µm



Allure ColorShift  
10-60µm



Alpha Nano  
30-115µm



Andromeda ColorShift  
15-78µm



Anthias ColorShift  
5-25µm



Aqua-Violet ColorShift  
30-115µm



Arya ColorShift  
10-60µm



Balkan ColorShift  
10-60µm



Barbados Blue ColorShift  
10-60µm



Beta Nano  
30-115µm



Black Hole ColorShift  
10-120µm



BlueGill ColorShift  
5-25µm



Bondi ColorShift  
10-60µm



Bora Bora ColorShift  
10-60µm



Calypso ColorShift  
30-115µm



Casablanca ColorShift  
10-60µm



Casper ColorShift  
15-78µm



Caspian Gold Blue ColorShift  
10-60µm



Cobra ColorShift  
30-115µm



Cosmic Crush ColorShift  
10-45µm



Cotton Candy ColorShift  
30-120µm





Delta Nano  
100-250µm



Emporis ColorShift  
20-80µm



Europa ColorShift  
15-78µm



Fiji ColorShift  
<15µm



Flash ColorShift  
30-115µm



Galaxy ColorShift  
30-120µm



Genesis ColorShift  
10-120µm



Helios ColorShift  
10-120µm



Hydra ColorShift  
10-60µm



Iris-Violet ColorShift  
30-115µm



Jedi ColorShift  
10-45µm



Kepler ColorShift  
100-250µm



Khalifa ColorShift  
15-78µm



Komodo ColorShift  
20-80µm



Kranberry Cocktail ColorShift  
20-80µm



Krown Royale ColorShift  
10-45µm



Lambda Nano  
30-115µm



Lemon Lime ColorShift  
15-78µm



Lunar ColorShift  
10-60µm



Lynx ColorShift  
10-60µm



Mardi Gras ColorShift  
30-120µm



Monsoon ColorShift  
10-60µm



Mriya ColorShift  
10-60µm



Niagara ColorShift  
10-78µm



Olive Blueberry ColorShift  
15-78µm



Olive Gold ColorShift  
10-60µm



Omega Nano  
100-250µm



Omicron Nano  
100-250µm



Phoenix ColorShift  
5-25µm



Punch ColorShift  
10-60µm



Reptile Flip ColorShift  
15-78µm



Rose Gold ColorShift  
10-60µm



Sahara ColorShift  
5-25µm



Sentinel ColorShift  
10-60µm



Shiraz ColorShift  
15-78µm



Sigma Nano  
100-250µm





Sockeye ColorShift  
5-25 $\mu$ m



Theta Nano  
30-115 $\mu$ m



Triton ColorShift  
10-45 $\mu$ m



Tuscan ColorShift  
10-60 $\mu$ m



Vanguard ColorShift  
10-60 $\mu$ m



Vero ColorShift  
10-60 $\mu$ m



Worm Hole ColorShift  
10-60 $\mu$ m



Zeta Nano  
100-250 $\mu$ m



Zombie Midnight ColorShift  
10-78 $\mu$ m

# HYPERSHIFT PEARLS

THE MOST VIVID AND HARDEST SHIFTING PEARLS ON THE MARKET. MANY HYPERSHIFTS CAN SHOW 5-6 DIFFERENT COLORS BASED ON VIEWING ANGLE.



ZTA  
5-25 $\mu$ m



ZTF  
5-25 $\mu$ m



ZTG  
5-25 $\mu$ m



ZTK  
15-25 $\mu$ m



ZTL  
10-60 $\mu$ m



ZTM  
10-60 $\mu$ m



ZTN  
15-25 $\mu$ m



ZTO  
5-25 $\mu$ m



ZTP  
10-60 $\mu$ m





ZTR  
5-25 $\mu$ m



ZTS  
5-25 $\mu$ m



ZTU  
15-25 $\mu$ m



ZTX  
10-60 $\mu$ m



ZTZ  
15-25 $\mu$ m

## FURTHER INFORMATION

### REGULATORY INFORMATION

KP Pigments' ColorShift pigments are produced with raw materials which are listed on most chemical inventories internationally. The pigments are safe for transport via ground, ocean and air in almost every country and every circumstance. Please consult the Safety Data Sheets or contact our support team for any further regulatory information. To request a safety datasheet please e-mail: [info@KPPigments.com](mailto:info@KPPigments.com)

### ORDERING INFORMATION

For information on these and/or other products or to obtain pricing and availability, please contact KP Pigments at: [info@KPPigments.com](mailto:info@KPPigments.com) or via phone at: (516) 705-4389.

KP Pigments ®  
66 Randall Avenue  
Suite #2  
Rockville Centre, NY 11570  
e: [info@kppigments.com](mailto:info@kppigments.com)  
p: (516) 705-4389

**KP**  
**KP PIGMENTS**

# TECHNICAL SPECS

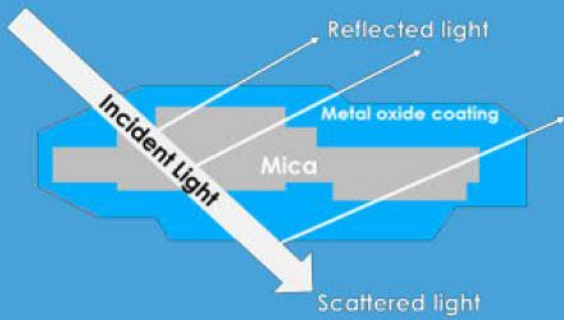


Figure 1. Light interacts with a mica flake coated with a metal oxide. Some of the light is transmitted through the particle, or scattered, and some of the light is reflected.

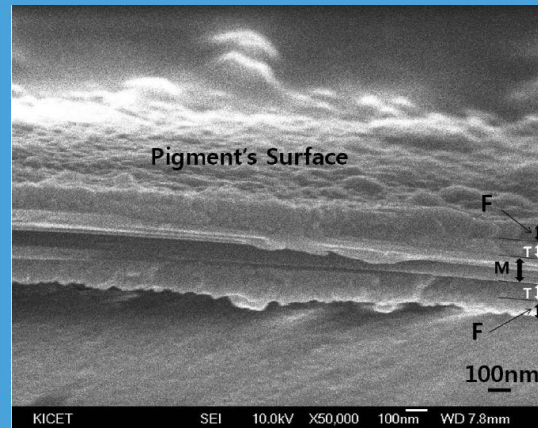
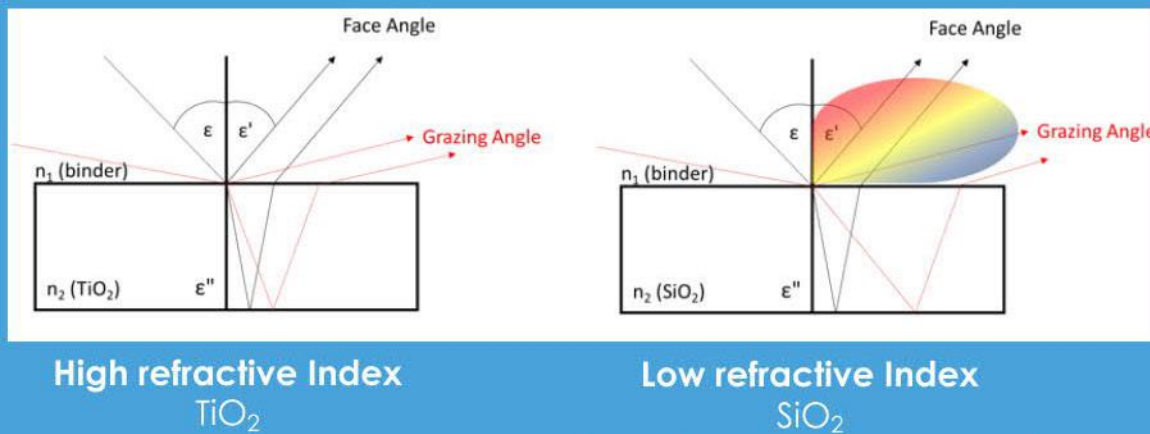


Figure 2. A cross section of a mica particle coated with a metal oxide.



Figure 3. Cross section of an optically variable (ColorShift) pigment. Certain colors are reflected while others are transmitted.



**High refractive Index**  
TiO<sub>2</sub>

**Low refractive Index**  
SiO<sub>2</sub>

Figure 4. Snell's Law as it applies to optically-variable pigment behavior.





# DON'T SEE WHAT YOU'RE LOOKING FOR?

KP Pigments is constant adding new and innovative products and pigments to our line-up. If you don't see exactly what you're looking for or have a specific color or effect pigment request please don't hesitate to contact our support team. We are more than happy to help meet your specific needs and offer customized products for our clients.



## FREQUENTLY ASKED QUESTIONS

**Q: Do you offer wholesale rates?**

A: Yes, depending on your needs, we offer jobber, distributor and wholesale discounts. For more information please contact us via e-mail: [info@KPPigments.com](mailto:info@KPPigments.com), phone: (516) 705-4389 or fill out our installer application on our website: [www.KPPigments.com](http://www.KPPigments.com)

**Q: Are your pearl pigments safe for cosmetic use?**

A: Yes. All of our pigments with the exception of our OEM+ series and our Carbon Pearls are safe for use in cosmetics.

**Q: How much pigment should I be using?**

A: We have a mixing chart available on the product pages for all of our colors on [www.KPPigments.com](http://www.KPPigments.com). There is also a mixing chart on page 3 of this brochure.

**Q: Can I mix 2 colors to create a custom color?**

A: Absolutely. However, please keep in mind mixing two colorshifts or two interference pigments can cause the colors to cancel out. We strongly suggest doing small scale testing if you want to mix two colors.

**Q: What is a color shifting pearl?**

A: Colorshift, or Optically Variable, pearls change color and hue based on viewing angle. They create vivid metallic effects just like a chameleon paint job.

**Q: How many colors do you have available?**

A: We currently have over 200 readily available colors to choose from, with the ability to mix colors for larger orders.

**Q: What is your MOQ or minimum order quantity?**

A: Our MOQ is only 5 grams!

**Q: What is your trade capacity?**

A: Our trade capacity depends on color and availability of raw materials, but for most colors we can easily produce 500 KG per week.

**Q: What can I use your pigments in?**

A: Almost anything! Here is just a fraction of the industries we serve: Removable Coatings, Car OEM Coatings, Masterbatch pigmentation, Cosmetics, Plastic and rubber manufacturing, leather manufacturing, Screen Printing and Offset Printing, Architectural Coatings and much, much more.

**Q: Where is KP Pigments Located?**

A: We are headquartered in the town of Rockville Centre in Long Island, New York. 15 minutes from New York City.

**Q: Do you have stock of all of your products?**

A: Yes, with a few exceptions, everything we have on our website is in stock and will ship out same or next business day.

**Q: How can I order?**

A: You are welcome to order directly from our website: [www.KPPigments.com](http://www.KPPigments.com) or via phone by calling us at (516) 705-4389

**Q: Do you offer samples for testing?**

A: Yes we do! You can fill-out a samples request form on [www.KPPigments.com](http://www.KPPigments.com)

**Q: Can you match a color I'm already using?**

A: While this is often a difficult task, our technicians can try their best to help you create a spot on match.

**Q: How can I request an SDS form for your pigments?**

A: You may request an SDS either via e-mail: [info@KPPigments.com](mailto:info@KPPigments.com), or click the "Request an SDS" button on the product page of the color you're looking at on our website.

**Q: What is your favorite color that you sell?**

A: While we'd absolutely love to pick a favorite color, that question to us is as picking a favorite child. We love them all equally!





KP Pigments  
66 Randall Avenue  
Suite #2  
Rockville Centre, NY  
11570

Phone: (516) 705-4389  
E-mail: [info@Kppigments.com](mailto:info@Kppigments.com)  
Website: [www.Kppigments.com](http://www.Kppigments.com)