

pigeon

SofTouch™

Peristaltic PLUS

Nursing Bottle

PIGEON
PIGEON CORPORATION
 4-4 Nihonbashi Hisamatsu-cho, Chuo-ku,
 Tokyo 103-8480 JAPAN
 www.pigeon.com

Caution:

Before first use, be sure to clean and place in boiling water for 5 minutes. This is to ensure hygiene. Always wash your hands with soap before cleaning, sterilizing and feeding.

Cleaning

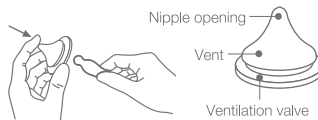
Immediately after use, rinse in warm water and wash using a Pigeon Liquid Cleanser. Use a nylon brush to wash glass bottles.

Caution:

Scrubbing brushes with abrasives, metal scrubbing brushes and abrasive cleansers can damage bottles. Do not use these items when washing bottles. Doing so can leave the bottles more prone to breakage.

Caution:

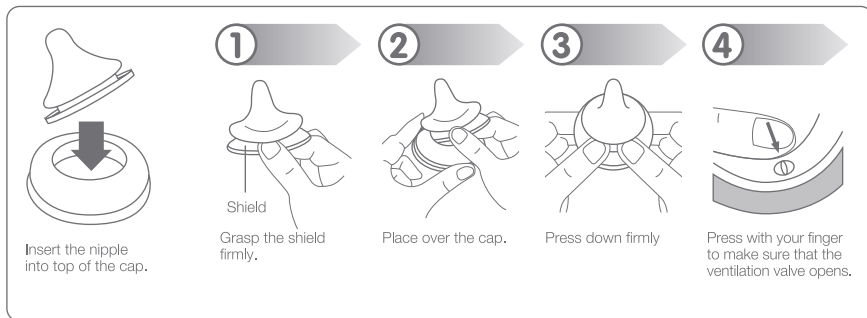
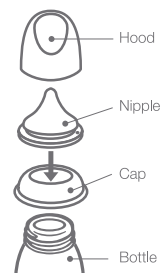
- To protect the ventilation valve and Y-cut nipple opening, a white powdered food additive has been applied. Before using for the first time, wash thoroughly.
- Use both hands to gently rub clean the ventilation valve, vent, and nipple opening. If you scrub too hard or pull on these, the valve may split, which can cause leaks.
- The tip of the nipple is very delicate. When using a brush to clean the nipple, wash very carefully.



Sterilization

Be sure to sterilize before every use.
 Boiling sterilization: Thoroughly wash the nipple, bottle, cap and hood, and place in water. Bring the water to a boil. Sterilize for 5 minutes after the water comes to a boil.
 Chemical sterilization and microwave sterilization are possible. Use sterilization products made specifically for baby bottles and nipples. Follow the instructions in the user's manual for these products.
 With chemical sterilization, the printing on the bottle may fade.

How to Assemble



Formula

See the milk powder package for details on how to prepare formula.

- Always prepare formula using water that has been boiled. Use boiled water that has been cooled to above 70°C.

If the water cools to below 70°C after boiling, do not use it.

Warning:

For glass bottle, if the bottle is cold, it may break if you suddenly pour boiling water into it, so exercise caution.

- Follow the instructions for making formula for each milk powder manufacturer.

- Put the cap, with nipple affixed, on the bottle, and tighten lightly.

Without attaching the hood, swirl the bottle slowly.

When the powder is completely dissolved, pour in the rest of the hot water.

Warning:

- When preparing formula, if you shake the upright bottle, hot liquid may gush out, causing burns. Handle the bottle carefully.
- Do not attach the hood and shake the bottle. If the hood is attached, the high temperatures may cause the pressure inside the bottle to rise, leading to leaks or spouting of the hot liquid.

- After preparing the formula, attach the hood, and hold the bottle under running tap water until the temperature cools to a degree suitable for feeding.

At this time, prevent the running water from coming into contact with the nipple and cap by keeping the water below the cap.

Warning:

For glass bottle, do not use ice water to cool the formula, as the extreme difference in temperature inside and outside the bottle can cause glass bottles to break.

- Drip a little bit of formula on the inside of your arm to check that the temperature is suitable for feeding.

M and L size Y-Cut nipples

The nipple opening is closed, and milk will not drip out even if you tilt the bottle. After cooling the bottle thoroughly, check the outside temperature of the bottle.

SS or S round hole nipples

Tilting the bottle may cause milk to gush out. Hold the bottle that way for a while until the flow slows to a slow drip before feeding.

Warning:

Never use a microwave in the preparation. Microwaves heat unevenly and may cause "hot spots" that could scald the baby's mouth.

Feeding

Feed your baby the formula after cooling it to approximately body temperature.

Warning:

- Only a caregiver should feed the baby.
- If you tighten the cap too securely, the nipple may collapse.
- After preparing the formula, consume immediately. Discard any formula not used within 2 hours of preparation.

Note:

If your baby grows comfortable with one certain nipple, he or she may object if you change to a new one. Rotate the use of 2 or more nipples for about 2 months before replacing them. To prevent the nipples from becoming worn out, replace them earlier if necessary, without regard to how many times they have been used.

Warning (glass bottle):

- Glass bottle may break when dropped or subjected to an impact. This may lead to injury or scalding.

- Do NOT freeze. The glass may break or have cracks when taken out of the freezer due to thermal shock.

- Inspect the bottle before and after each use. Replace with a new one whenever a crack or other damage is found.

- Use only under adult supervision. Do not allow infants to use the bottle unsupervised. If your

child drops the bottle or falls down with it, the glass may break and cause injury.

Warning:

Follow the warnings below carefully. Not doing so can cause burns.

- When preparing formula, the bottle may also become hot. Be careful not to burn yourself.
- Do not prepare formula near your baby, as there is a danger of burns.
- Be sure to check the temperature of the milk or other fluid before feeding.
- After boiling or microwave sterilization, the bottle will be hot. Be careful not to burn yourself.

Nursing bottles are to be used to feed your baby milk or other liquids. Do not use them for any other purpose.

For your child's safety and health

WARNING!

- Always use this product with adult supervision.
- Never use nipples as a soother.
- Continuous and prolonged sucking of fluids will cause tooth decay.
- Always check food temperature before feeding.
- Keep all components out of the reach of children.

- Inspect before each use and pull the nipple in all direction. The nipples may be worn by biting. Special attention is needed for teething child. Throw away at the first signs of damage or weakness.

- Do not leave a nipple in direct sunlight or heat, or leave in disinfectant ("sterilizing solution") for longer than recommended, as this may weaken the nipple.

- When not in use, keep in a dry, covered container.