

Nursing bottles are to be used to feed your baby milk or other liquids. Do not use them for any other purpose.

For your child's safety and health

**WARNING!**

Always use this product with adult supervision.

Never use nipples as a soother.

Continuous and prolonged sucking of fluids will cause tooth decay. Always check food temperature before feeding.

Keep all components out of the reach of children.

Inspect before each use and pull the nipple in all direction. The nipples may be worn by biting. Special attention is needed for teething child. Throw away at the first signs of damage or weakness. Do not leave a nipple in direct sunlight or heat, or leave in disinfectant ("sterilizing solution") for longer than recommended, as this may weaken the nipple.

When not in use, keep in a dry, covered container.

**Warning (glass bottle):**

The glass bottle is breakable. Caution is required, otherwise it could cause injury or scalding.

Inspect the bottle before and after each use. Replace with a new one whenever a crack or other damage is found.

The glass is breakable if dropped, or subject to an impact. Handle with care.

Use only under adult supervision. Do not allow infants to use the bottle unsupervised. If your child drops the bottle or falls down with it, the glass may break and cause injury.

**Sterilizing instruction**

Be sure to sterilize before each use.

Boiling sterilization: After thoroughly washing the parts of the bottle (bottle, nipple, cap and hood), completely submerge them in boiling water for 5 minutes to sterilize.

Chemical sterilization and microwave sterilization are also possible. Use sterilization products made specifically for baby bottles and nipples. Follow the directions in the user's manual for these products. With chemical sterilization, the color of the printing may change.

**Warning :** Be careful not to burn yourself when using boiling sterilization or microwave sterilization.

**Preparation of formula**

See the milk powder package for instructions on how to mix formula.

Be sure to use water that has been boiled. Do not use the water if it cools to below 70°C after boiling.

**Warning :** When feeding your baby, cool the formula as described below.

Never use a microwave in the preparation. Microwaves heat unevenly and may cause "hot spots" that could scald the baby's mouth.

Do not prepare formula near your baby, as there is a danger of burns.

1) Fill a washed and sterilized bottle with 1/2 to 2/3 the required amount of boiled water that is above 70°C. Add the correct amount of powdered formula.

**Warning :** For glass bottle, if the bottle is cold, it may break if you suddenly pour boiling water into it, so exercise caution.

2) Put the cap, with nipple affixed, on the bottle, and tighten lightly. Without attaching the hood, hold the bottle upright and swirl to dissolve the formula powder. When the powder is completely dissolved, pour in the rest of the hot water.

**Warning :** When preparing formula, the bottle may also become hot. Be careful not to burn yourself. When preparing formula, if you shake the upright bottle, hot liquid may gush out, causing

**Note:** If your baby grows comfortable with one certain nipple, he or she may object if you change to a new one. Rotate the use of 2 or more nipples for about 2 months before replacing them. To prevent the nipples from becoming worn out, replace them earlier if necessary, without regard to how many times they have been used.

If the openings are clogged or the nipple hole size is not suitable for your baby, the pressure inside the bottle may rise, causing the nipple to collapse and opening a gap between the nipple and cap. Your baby's lip or tongue may be caught in this gap, so exercise caution.

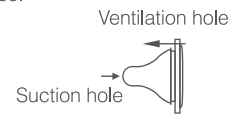
**Caution:** Before first use, be sure to wash and sterilize thoroughly following the instruction.

Always wash your hands with soap before cleaning, sterilizing and feeding.

**Cleaning instruction**

Immediately after each use, rinse in warm water and wash with Pigeon Liquid Cleanser for Nursing Bottles.

Use a nylon brush to wash glass bottles.



**Warning :** The nipple opening and ventilation hole can become clogged. Clogging can lead to such problems as nipple collapse and the nipple collapsing into the bottle.

Keep the nipple opening and ventilation hole clear.

The tip of the nipple is very delicate. When using a nipple brush to clean it, gently press the nipple with the pad of the finger while washing.



**Warning :** Scrubbing brushes with abrasives, metal scrubbing brushes and abrasive cleansers can damage bottles. Do not use these items when washing bottles. Doing so can leave the bottles more prone to breakage.

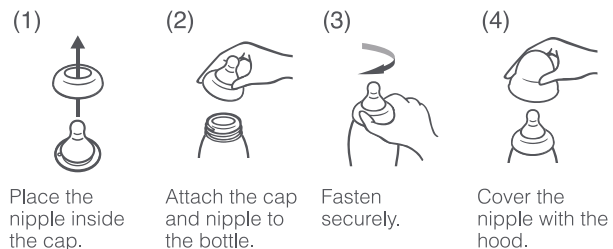
burns. Handle the bottle carefully. Do not attach the hood and shake the bottle. If the hood is attached, the high temperatures may cause the pressure inside the bottle to rise, leading to leaks or spouting of the hot liquid.

3) After preparing the formula, attach the hood and hold the bottle under running tap water to cool to approximately body temperature. Ensure that the level of the cooling water is below the cap. In order to avoid scalding the baby's mouth, drip formula on the inside of your arm to check the temperature.

**Warning :** For glass bottle, do not use ice water to cool the formula, as the extreme difference in temperature inside and outside the bottle can cause it to break.

**Warning :** With a round hole (S, M, or L), tilting the bottle can cause liquid to gush out. Wait until the milk slows to a drip before feeding your baby.

**How to assembly**



**Feeding**

Feed your baby the formula after cooling it to approximately body temperature. Be sure to hold your baby while you feed him or her. A feeding time of 10 to 15 minutes is considered ideal.

When feeding, there is a possibility that the nipple may collapse, so do not tighten the cap too securely.

**Caution:** Only a caregiver should feed the baby. After preparing the formula, consume immediately. Discard any formula not used within 2 hours of preparation.