

Mirth Studio Porcelain Collection Olympia



Product Specifications

Production:
High Definition Ink
Jet Technology

Size:
13"x13"x.625"

Weight:
4.167lbs ea.

PEI: 4

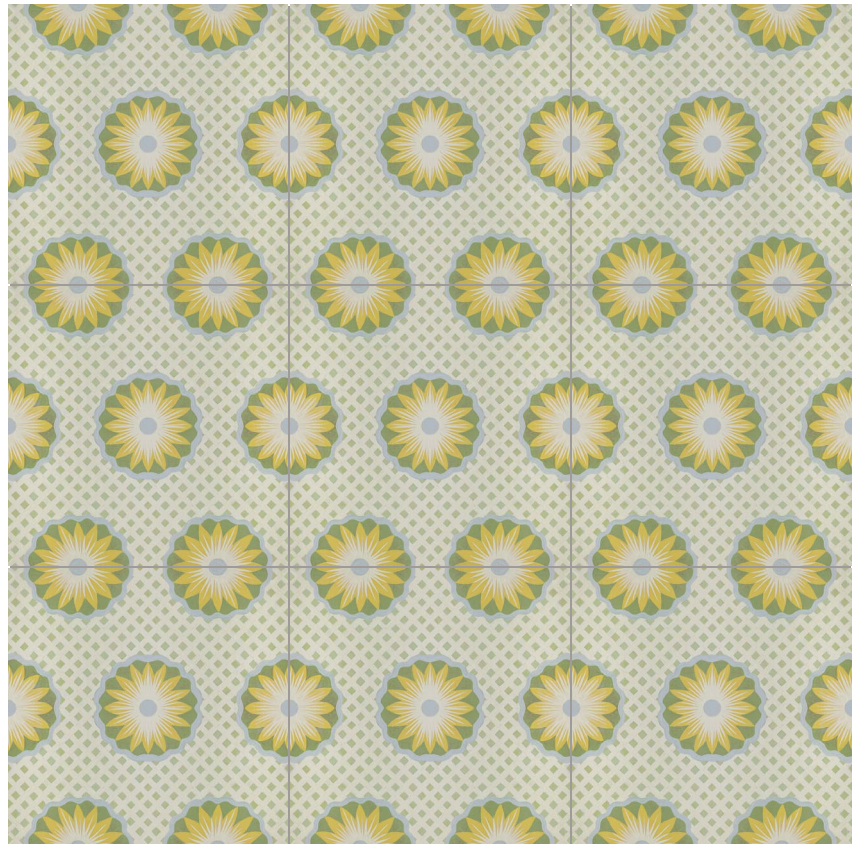
MOHS: 5

DCOF: .60

Water Absorption:
less than .5%

Frost Proof: Yes

Pattern Repeat



MIRTH STUDIO

For additional questions
please contact
Mirth Studio directly:
620 Dobbin Road
Charleston, SC 29414
P: 866-519-7727
E: info@mirthstudio.com