

Mirth Studio Porcelain Collection  
Glow



### Product Specifications

Production:  
High Definition Ink  
Jet Technology

Size: 12"x12"x.625"

Weight: 4.167lbs  
ea.

PEI: 4

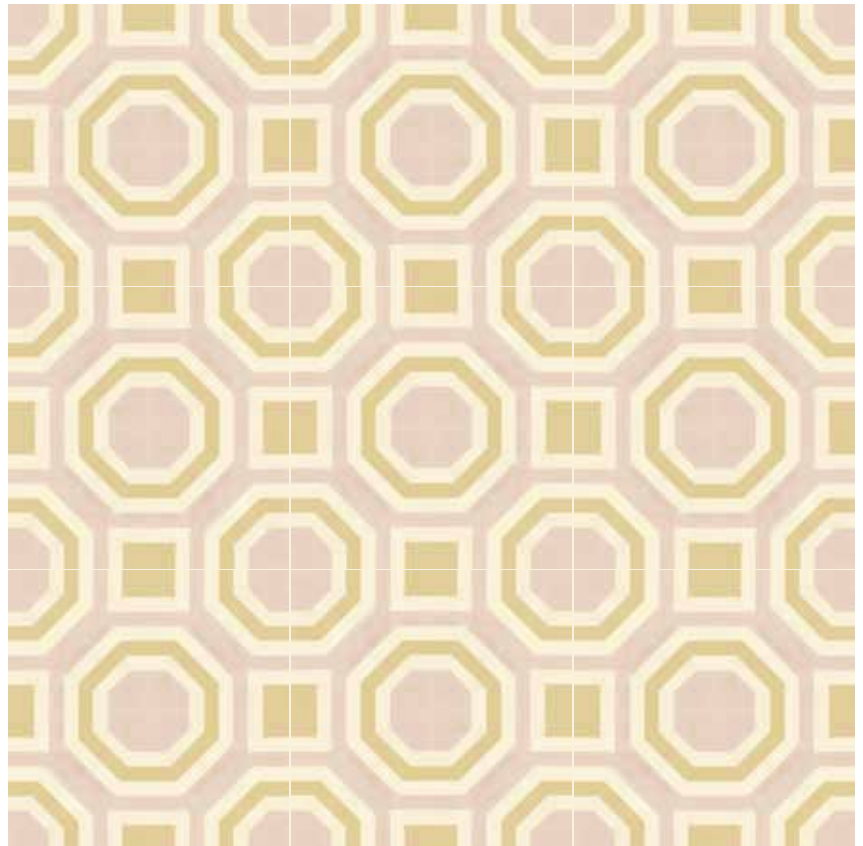
MOHS: 5

DCOF: .60

Water Absorption  
less than .5%

Frost Proof: Yes

### Pattern Repeat



Mirth Studio

For additional questions  
please contact  
Mirth Studio directly:  
620 Dobbin Road  
Charleston, SC 29414  
P: 866-519-7727  
F: 864-349-2113  
E: [info@mirthstdio.com](mailto:info@mirthstdio.com)