

# Mirth Studio Porcelain Collection Belmont



## Product Specifications

Production:  
High Definition Ink  
Jet Technology

PEI: 4

MOHS: 5

Size: 13"x13"x.625"

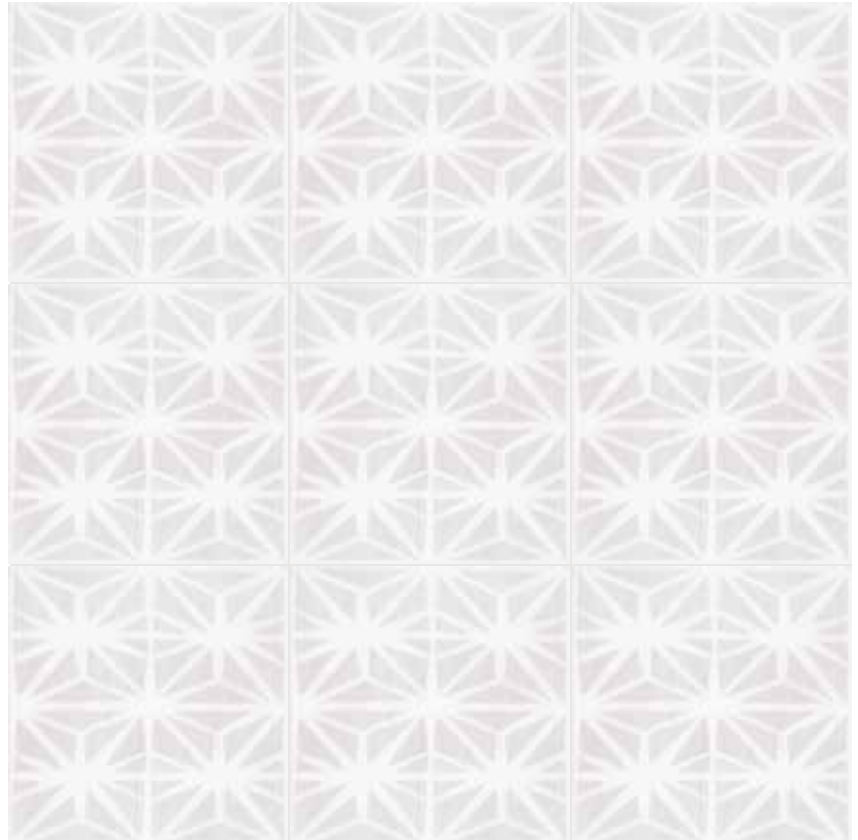
DCOF: .58

Weight: 4.167lbs  
ea.

Water Absorption  
less than .5%

Frost Proof: Yes

## Pattern Repeat



Mirth Studio

For additional questions  
please contact  
Mirth Studio directly:  
620 Dobbin Road  
Charleston, SC 29414  
P: 866-519-7727  
F: 864-349-2113  
E: [info@mirthstdio.com](mailto:info@mirthstdio.com)