

Welcome to your PlanetCare microfiber filter



PlanetCare
microfibre filters

Hey, Ocean Hero!

In front of you is your very own PlanetCare microfiber filter. Every time you'll do laundry, it will stop 90% of all microfibers that would otherwise go down the drain and into the oceans. This way you'll **keep a bag worth of plastic microfibers out of nature every week**. Thank you for caring – every laundry counts!

If, at any point, you're having any questions or difficulties, please reach out by emailing us at hello@planetcare.org We are here for you.

Happy filtering,
Your PlanetCare Team

You're Making a Change

You're now a part of a global community of change makers. Together, all PlanetCare users have already **prevented over 47,000 bags worth of microplastic pollution** and the number is growing every day.

But you are also fuelling a much broader transition. The joint efforts of PlanetCare users have already attracted the attention of policymakers and had a **direct impact on policy changes** in France. And there's more to follow.

Every change starts with a single step and we're so grateful you're walking towards a plastic-free future with us.

Start filtering

Installing your PlanetCare microfiber is easy and takes approximately 10 minutes. You don't need any professional help or special tools. Simply follow the steps in this manual and you'll be all set to start filtering.

You can also go to www.planetcare.org/start and follow the video steps there (*scan the QR code to go to the site*)



In your box



1

Housing top



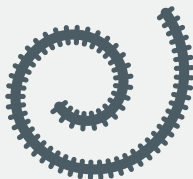
2

Holder



3

Screws



4

Tube



5

Cup



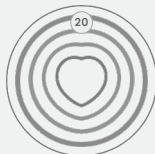
6

Cartridge



7

Silicone lubricant

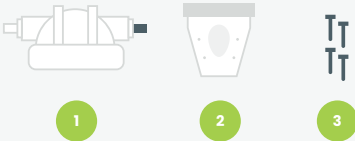


8

Counter

Installation Steps

Step 1

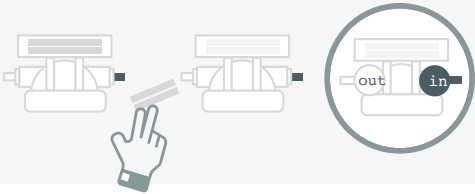


Take the housing top (1) and attach it to the holder (2) with the four screws (3) provided.

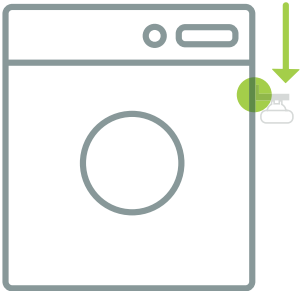
NOTE: Take the IN and OUT side into account (see step 3). Make sure to get the water IN side closest to the water coming from the washing machine. The OUT side leads to the drain.



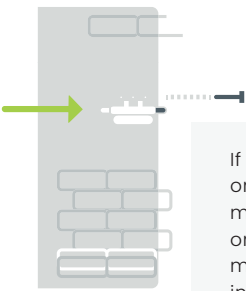
Step 2



Remove the protective layer from the double sided tape which is attached to the back of the holder. Now stick the holder and the housing top to the side of your washing machine.



Option A
On the washing machine



Option B
On a wall

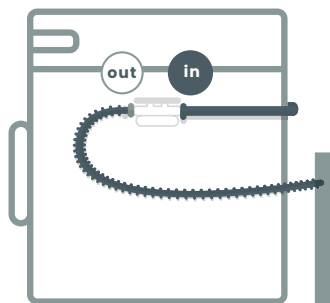
If you don't have enough space on the side of your washing machine you can also hang it on a wall close to the washing machine. (Screws are not included for this)

Step 3



4

Now you can attach the tube leading water from the washing machine to the IN attachment on the housing top and use the supplied to connect the OUT side to the drain.



Step 4

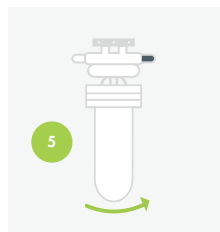
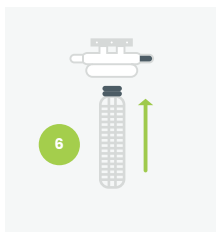
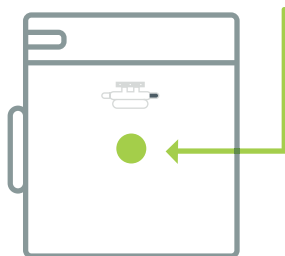


5

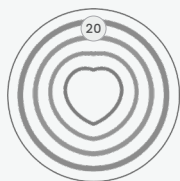


6

Stick the cartridge (6) in the housing top. Then screw on the cup (5).

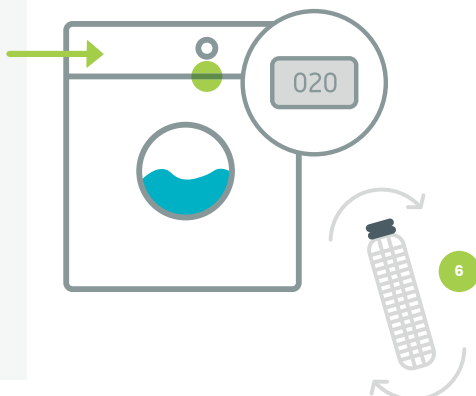


Step 5



8

Your microfiber filter is now ready to use. Finally, attach the magnetic counter under the ON button of your washing machine. Use the counter each time you do your laundry. After approximately 20 washes replace the cartridge for a new one.

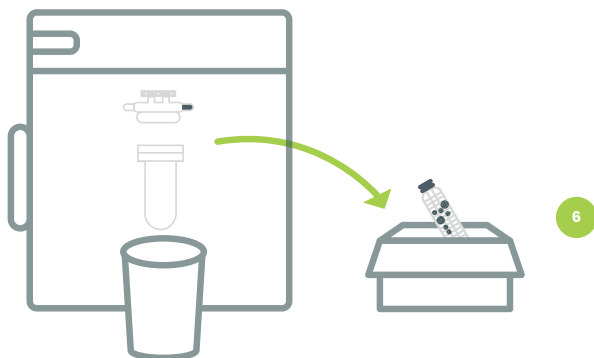


Replacing a used cartridge

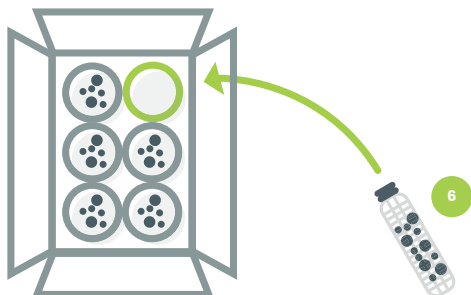
Step 1



To renew the cartridge, unscrew the cup and remove the cartridge. Let the cartridge drain and dry and save it for return and reuse. Now take a new cartridge and attach it into the housing top. Attach and tighten the cup and your filter is ready to use again.



Step 2



When you've installed the last clean cartridge, return the used cartridges to PlanetCare.

Return shipping is free!

If you have any questions or feedback please contact us at hello@planetcare.org

Additional Tips

1 Installation height

Do not install the filter above the outlet for the drain hose on the washing machine. Also do not lead the hoses higher than that point. Additional height in the path of the water will reduce efficiency of draining (the water from the machine) and may result in the machine detecting a obstructed drain even when the filter is not clogged.

2 Detergent

We highly recommend you [use only liquid detergents](#). They dissolve completely and won't compromise the performance of your microfibre filter. On the other hand, powder detergents contain ingredients that don't dissolve and will get caught by your filter. This might affect the durability of the cartridges. If you do decide to use powder detergents, we recommend you avoid overdosing to keep this effect to a minimum.

3 Silicone lubricant

We recommend using the supplied silicone lubricant for light lubrication of the rubber seal between the housing top and bottom parts. This will improve sealing and ease tightening/opening of the housing.

Inspire Others

We need more Ocean Heroes like you!

Share your plastic-free laundry routine to inspire others to change theirs, too.

Tag [@planetcare.solutions](https://www.instagram.com/planetcare.solutions) and use [#planetcarefilters](https://www.instagram.com/explore/tags/planetcarefilters) when you post on Instagram

[instagram.com/planetcare.solutions](https://www.instagram.com/planetcare.solutions)

[facebook.com/PlanetCareSolutions](https://www.facebook.com/PlanetCareSolutions)

PlanetCare
Stegne 21
1000 Ljubljana
Slovenia

hello@planetcare.org
www.planetcare.org

