



JULY 2023 PRODUCT CATALOG

DUMP BODY / TRAILER/
ROLL OFF

TARP KITS

ELECTRIC /
MANUAL - FRONT
TO BACK /
SIDE ROLL / CABLE



207 SMITH ROAD, SLOCOMB, AL 36375

PH: 888-577-5218

WWW.TARPINGUSA.COM

WWW.KYMINDUSTRIES.COM



Tarping USA

Vision

Tarping USA is the Heavy Duty Truck Division of Kym Industries, Inc. Kym Industries is a member of the Women's Business Enterprise Council "WEBNC" for being a 100% woman owned company. We are a family owned and veteran-operated business that has been serving the waste and hauling industry for 27 years. We are a manufacturer of tarps and landfill covers and a trusted distributor of container liners, ratchet straps, tarping systems, and replacement parts for dump trucks, trailers, dumpsters, and roll-off containers. Since Tarping USA is a manufacturer and not a re-seller, we are able to pass on huge discounts to our customers. Our customers know that each day, all we will be concerning ourselves with is the quality of our products and making sure they get there in a timely manner. When doing business with us, you know that there are no hidden costs. All tarps that we manufacture include webbing all around the hems, vinyl reinforced pockets, double stitching, and grommets all around at standard spacing at no extra charge. We can build any tarp to your specifications. We always have service and quality in mind for you the customer. We are proud to say that Tarping USA takes pride in every tarp we sell. Give us a call today. We look forward to doing business with you, and your company.

For more information visit our website:

WWW.TARPINGUSA.COM
WWW.KYMINDUSTRIES.COM

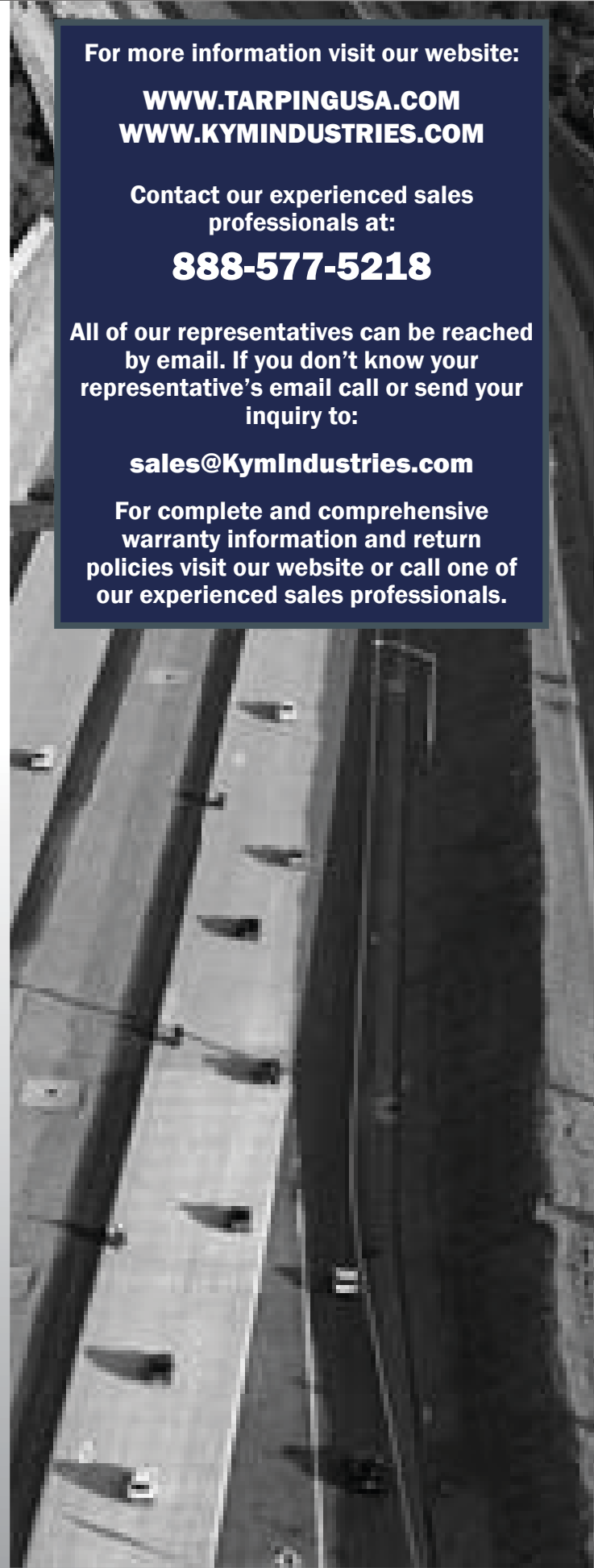
Contact our experienced sales professionals at:

888-577-5218

All of our representatives can be reached by email. If you don't know your representative's email call or send your inquiry to:

sales@KymIndustries.com

For complete and comprehensive warranty information and return policies visit our website or call one of our experienced sales professionals.



"Doing Tarping Systems the Right Way"

Arm and Pull Style

Page 1-21



Tarpaulins and Motors

Industrial Grade Dump Truck Tarpaulins.....	1
Premium Motors.....	2

Aluminum

Patriot.....	3-4
Patriot Underbody.....	5-6
Terminator.....	7-8
Terminator Underbody.....	9-10

Stealth

Stealth Steel.....	11-12
--------------------	-------

Manual Kits

Ground Level.....	13-14
SlingShot.....	15-16
Crank and Pull.....	17-18

Spool Kits & Other Assemblies

Tarp Spool Kits.....	19-20
Patriot Tarp Tensioner.....	21

Side Roll Systems

Page 22-24

Side Roll Kits

ASSASSIN R/O.....	22
ASSASSIN.....	23
Electro-Sassin.....	24

Crank Handle Breakdowns

Page 25-28

ASSASSIN Crank Handles.....	25
Breaking Crank.....	26
L-Series Crank.....	27
RTS Crank.....	28

Waste Tarp Sketches

Page 29-30

Ratchet Straps & Bungee Straps

Page 31-32

Turf Green Covers

Page 33

Replacement Parts

Page 34-40

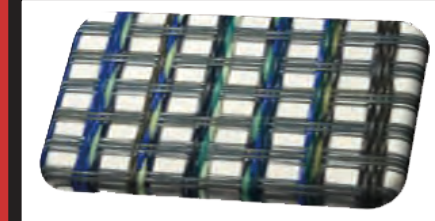


INDUSTRIAL GRADE TARPAULIN

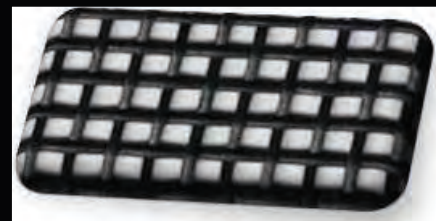
Color shown not guaranteed unless specified in material title.



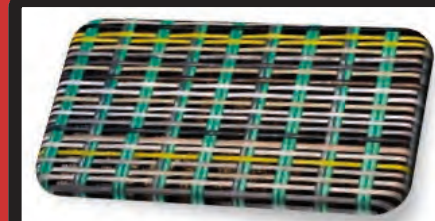
18oz Vinyl



Super Mesh



Black Mesh



Multi Mesh

STANDARD FEATURES:

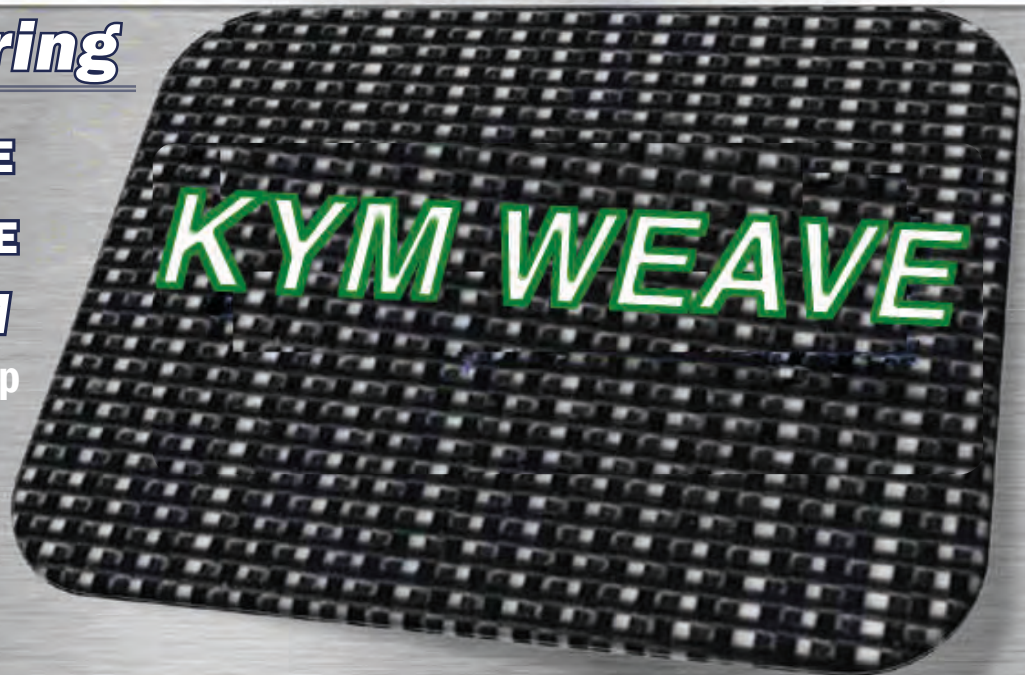
- 6" Reinforced pockets
- HD Webbing and Grommets on all sides
- Double lock stitching throughout

OPTIONS:

- Ask about Custom Tarps
- Putting Green Covers available
- Add D-Rings or Straps
- Side and End Flaps
- Color Options Available
- Cargo Webbing

Now Offering

**PRO GRADE
KYM WEAVE**
is *Tarping USA*
premier mesh tarp
material.



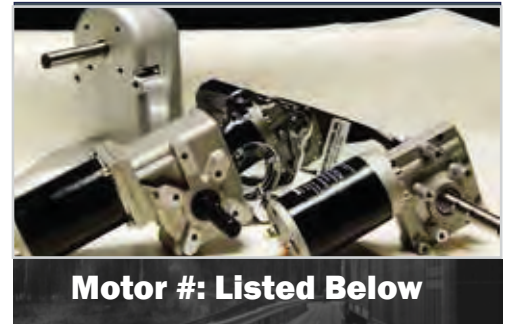
KYM WEAVE is a rugged multi-filament mesh that is designed to resist tearing with a unique bi-weave pattern that takes advantage of flexible horizontal strands and rigid vertical strands.

"Doing Tarping Systems the Right Way" UP TO 40'

PREMIUM TARP MOTORS

12v and 24v Tarp Motors

We offer **Premium Tarp Motors** to meet any need from small dump bodies to large trailers. As shown to the right, our motor comes with a chrome cover, its 5 bolt pattern makes it compatible with any Tarping System currently in use from any manufacturer using a 3, 4, or 5 bolt pattern. Our **Premium Tarp Motors** will replace your existing motor.



Motor #: Listed Below

STANDARD FEATURES:

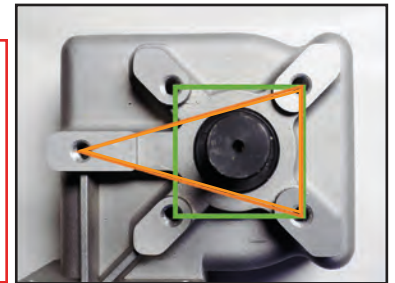
- Universal 3/4" x 3 3/4" Stud Shaft
- Motor Cover with Chrome Appearance
- 12 Volt Direct Drive
- 1.5 hp or 2 hp
- Standard 3 and 5 year warranties
- **Excluding warranty motors**

OPTIONS:

- 24 Volt Direct Drive

Will it fit my Kit?

Our motors have a 5 bolt pattern. This makes them compatible with other brands **3 bolt** and **4 bolt** patterns.



For more images of parts and options view the Replacement Parts on Page 34



K-APACHE



K-TOMAHAWK



K-ENFORCER 2.0

12v MOTORS	DESCRIPTION
K-APACHE	APACHE Slim Tarp Motor. 50:1. 12v. 3 yr Wty. 1.5 hp.
K-TOMAHAWK	TOMAHAWK Tarp Motor. 60:1. 12v. 3 yr. Wty. 1.5 hp.
K-ENFORCER 2.0	ENFORCER HD Tarp Motor. 90:1. 12v. 5 yr. Wty. 2.0 hp.
K-DRONE	DRONE Super HD Tarp Motor. 60:1. 12v. 5 yr. Wty. 2.0 hp.
24v MOTORS	DESCRIPTION
K-APACHE24	APACHE Slim Tarp Motor. 50:1. 24v. 3 yr Wty. 1.5 hp.

DRONE

A SUPER DUTY Motor to keep your truck on the road LONGER.



REPLACEMENT PARTS

Part No.	Description
K-CMC	Chrome Motor Cover
K-ACMC	Apache Chrome Motor Cover
K-TCMC	Tomahawk Chrome Motor Cover
K-ECMC	Enforcer Chrome Motor Cover

Looking for a Super Duty Tarp Motor?

Check out our DRONE.



UP TO 28'

“PATRIOT”



Aluminum 4 and 5 Spring Electric Kit

Our **PATRIOT** is a polished aluminum arm Tarping System with side mounted spiral torsion springs Complete bolt-on assembly, no welding needed, and the polished aluminum arms will never rust! This kit is powered by our **Apache Slim** or **Tomahawk** direct drive motor for dump bodies up to 28'.



Kit #: PAT-4SP / PAT-5SP

Tarp not included. See Tarps on Page 1

STANDARD FEATURES:

- Rotary Switch Kit
- 6g Dual Connector Wire
- 12v Apache Slim Motor w/ 3-yr wty
- Fully Adjustable Aluminum Tarp Axle
- Complete Aluminum Arm Set
- Patriot Rubber Bumper
- All Necessary Components for Installation

OPTIONAL ACCESSORIES:

- Reverse Polarity Super Switch Kit
- Tarp Housing or Aluminum or Steel Wind Deflector
- **Motor:** 60:1 Tomahawk, 1.5 Hp
- **Motor:** 90:1 Heavy Duty Enforcer, 2.0 Hp
- **Motor:** 60:1 Super Heavy Duty Drone, 2.0 Hp
- 30 or 45 Degree Bend Inserts for Arms
- Tarp Tension Arm Assembly.

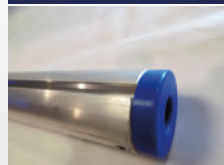
For more images of parts and options view the Replacement parts on page 34



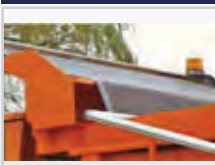
K-RSK



K-W6G



K-ATA93



K-TARPEN



K-APACHE

PART NUMBER	DESCRIPTION
K-GLCCK	Replace the electric with ground control manual
K-TOMAHAWK	Tomahawk Tarp Motor 60:1 1.5 hp 3 year warranty
K-ENFORCER2.0	ENFORCER HD Tarp Motor. 90:1. 2.0hp. 5 year Warranty
K-DRONE	DRONE Super HD Tarp Motor. 60:1. 2.0hp. 5 year Warranty
K-AWDK or K-AWDK94	Aluminum Wind Deflector. Cut to Fit.
K-SWDK	Steel Wind Deflector. Two Piece Adjustable.
K-98AH OR K-92AH	92" or 98" Aluminum Enclosed Housing.
K-AHSBA	Housing Support Braces.
K-RPSS or K-RPSS2	Reverse Polarity Super Switch Kit. 2 = Weather Resistant
K-CP	Replaces 30' of wire with contact plates
K-A30CA or K-A45CA	30 or 45 Degree Elbow Inserts
K-TARPEN	Tarp Tension Arm Assembly [See Page 21]

REPLACEMENT PARTS

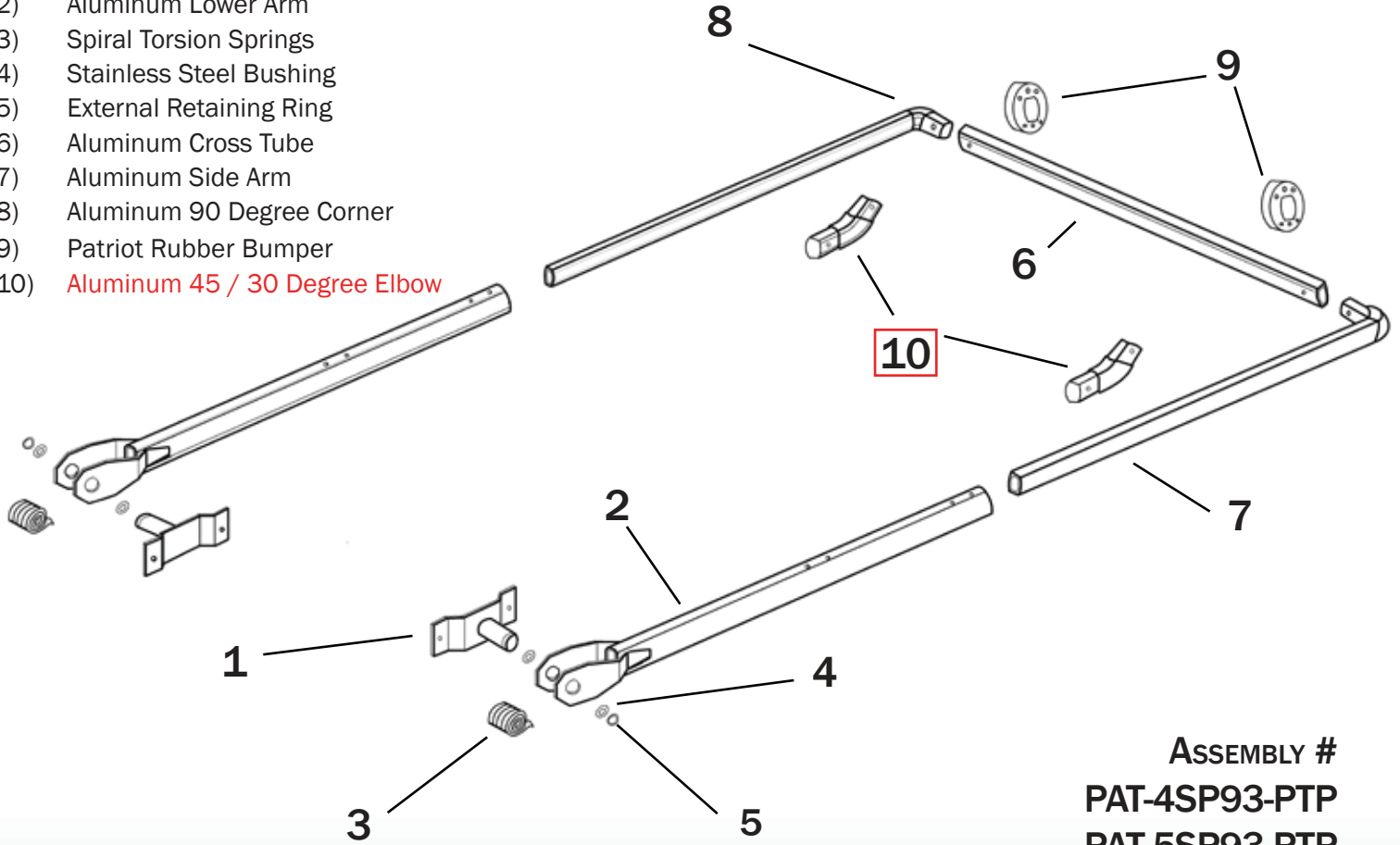
Part No.	Description
K-PP4SPA	4 Spring Pivot Pin
K-PP5SPA	5 Spring Pivot Pin
K-STs	Spiral Torsion Spring
K-ERR	External Retaining Ring
K-ATA93	Fully Adjustable Tarp Axle from 93" to 110"
K-ABWF	Axle Bearing w/ Flanges
K-SS	Axle Stud Shaft

Part No.	Description
K-ALA478	4 Spring Aluminum Lower Arm
K-ALA493	93" 4 spring aluminum lower arm
K-ALA593	5 Spring Aluminum Lower Arm
K-ASAWC93	Aluminum Side Arm w/ Corner
K-A30CA	30 Degree Elbow Insert
K-ACT93/110	3 piece adjustable Crosstube
K-PRB	Patriot Rubber Bumper

"Doing Tarping Systems the Right Way"

"PATRIOT" ARM SET PARTS BREAKDOWN

- 1) Pivot Pin
- 2) Aluminum Lower Arm
- 3) Spiral Torsion Springs
- 4) Stainless Steel Bushing
- 5) External Retaining Ring
- 6) Aluminum Cross Tube
- 7) Aluminum Side Arm
- 8) Aluminum 90 Degree Corner
- 9) Patriot Rubber Bumper
- 10) Aluminum 45 / 30 Degree Elbow



ASSEMBLY #
 PAT-4SP93-PTP
 PAT-5SP93-PTP

1



**K-PP4SP
 K-PP5SP**

2



**K-ALA478
 K-ALA593
 K-ALA493**

3



K-ST5

4



K-SSB

5



K-ERR

6



K-ACT93/110

7



K-ASAWC93

8



K-A90C

9



K-PRB

10



**K-A30C (Top)
 K-A45C (Bottom)**



UP TO 38'

"PATRIOT" UNDERBODY



Kit #: PAT-UB84 / PAT-UB144

Tarp not included. See Tarps on Page 1

Aluminum Underbody Mount Electric Kit

Our PATRIOT Underbody Kit is a polished aluminum pivot arm Tarping System with underbody mounted spiral torsion springs powered by our Tomahawk or heavy-duty ENFORCER direct drive motor for dump bodies up to 38'. Complete bolt-on assembly, no welding needed with polished aluminum pivot arms that never rust!

STANDARD FEATURES:

- Rotary Switch Kit
- 6g Dual Connector Wire
- 12v Motor w/ 3 or 5-yr wty
- Fully Adjustable Aluminum Tarp Axle
- Complete Aluminum Arm Set
- Patriot Rubber Bumper
- All Necessary Components for Installation

OPTIONAL ACCESSORIES:

- Reverse Polarity Super Switch Kit
- Tarp Housing or Aluminum or Steel Wind Deflector
- **Motor:** 90:1 Heavy Duty Enforcer, 2.0 Hp
- **Motor:** 60:1 Super Heavy Duty Drone, 2.0 Hp
- 30 or 45 Degree Bend Inserts for Arms
- Tarp Tension Arm Assembly

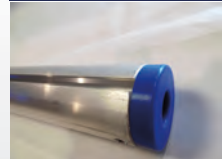
For more images of parts and options view the Replacement parts on page 34



K-RSK



K-DRONE



K-ATA93



K-DPPS



K-ENFORCER2.0



K-TARPTEN

PART NUMBER	DESCRIPTION
K-GLCCK	Replace the electric with ground control manual
K-ENFORCER2.0	ENFORCER HD Tarp Motor. 90:1. 2.0hp. 5 year Warranty
K-DRONE	DRONE Super HD Tarp Motor. 60:1. 2.0hp. 5 year Warranty
K-AWDK or K-AWDK94	Aluminum Wind Deflector. Cut to Fit.
K-SWDK	Steel Wind Deflector. Two Piece Adjustable.
K-98AH OR K-92AH	92" or 98" Aluminum Enclosed Housing.
K-AHSBA	Housing Support Braces.
K-RPSS or K-RPSS2	Reverse Polarity Super Switch Kit. 2 = Weather Resistant
K-CP	Replaces 30' of wire with contact plates
K-A30CA or K-A45CA	30 or 45 Degree Elbow Inserts
K-TARPTEN	Tarp Tension Arm Assembly [See Page 21]

REPLACEMENT PARTS

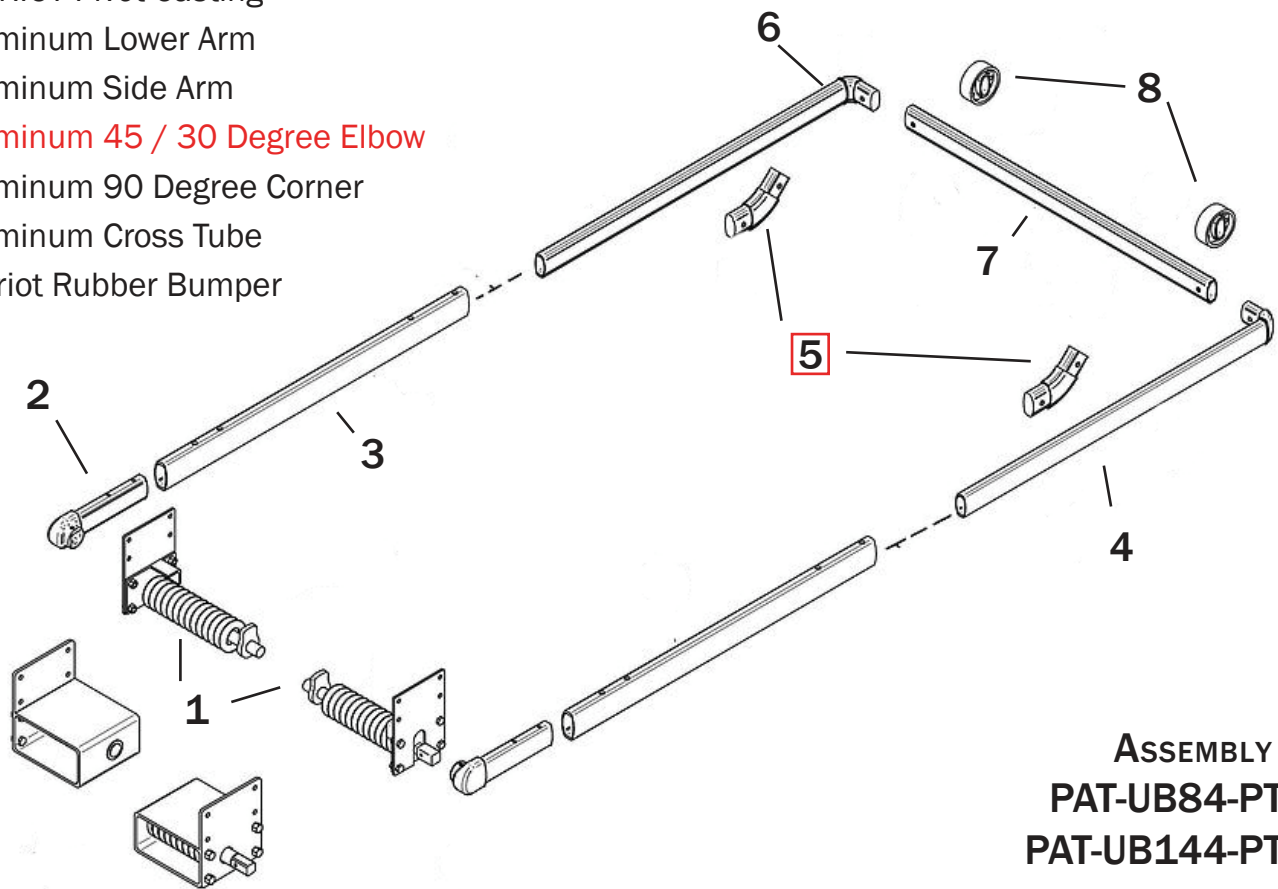
Part No.	Description
K-UBSS10	Complete underbody 10 spring set
K-AUBPC	PATRIOT Pivot Casting
K-ATA93	Fully Adjustable Tarp Axle 93" - 110"
K-ABWF	Axle Bearing
K-SS	Axle Stud Shaft
K-ATSMBXL	XL Tarp Spool Mounting Bracket

Part No.	Description
K-AUBLA84	PATRIOT 84" Lower Arm
K-AUBLA144	PATRIOT 144" Lower Arm
K-ASAWC103	Aluminum Side Arm w/ Corner 103"
K-A30CA	30 Degree Elbow Insert
K-A90CA	Aluminum 90 Degree Corner
K-ACT93/110	3 Piece Adjustable Cross Tube
K-PRB	Patriot Rubber Bumper

"Doing Tarping Systems the Right Way"

"PATRIOT" UNDERBODY ARM SET PARTS BREAKDOWN

- 1) Underbody Spring
- 2) PATRIOT Pivot Casting
- 3) Aluminum Lower Arm
- 4) Aluminum Side Arm
- 5) Aluminum 45 / 30 Degree Elbow
- 6) Aluminum 90 Degree Corner
- 7) Aluminum Cross Tube
- 8) Patriot Rubber Bumper



ASSEMBLY #
PAT-UB84-PTP
PAT-UB144-PTP

<p>1</p> <p>K-UBSD10 K-UBSP10</p>	<p>2</p> <p>K-AUBPC</p>	<p>3</p> <p>K-AUBLA84 K-AUBLA144</p>	<p>4</p> <p>K-ASAWC103</p>	<p>5</p> <p>K-A30C (Top) K-A45C (Bottom)</p>
<p>6</p> <p>K-A90C</p>	<p>7</p> <p>K-ACT93/110</p>	<p>8</p> <p>K-PRB</p>	<p><i>Need to see an option?</i> Match the part number with the picture in the 'Replacement Parts' section starting on page 34</p>	



UP TO 20'

“TERMINATOR”



Kit #: TERM-4SP

Tarp not included. See Tarps on Page 1

Premium Aluminum 4 Spring Electric Kit

Our Terminator is a premium aluminum Tarping System with a solid aluminum lower arm powered by our Apache Slim or Tomahawk direct drive motor for dump bodies up to 20' long. The 'Unbreakable*' arm comes straight or w/ 30 degree bends, and the springs are enclosed by high impact covers to maximize their lifespan. Bolt or Weld on assembly.

STANDARD FEATURES:

- Rotary Switch Kit
- 6g Dual Connector Wire
- 12v Apache Slim Motor w/ 3-yr wty
- Fully Adjustable Aluminum Tarp Axle
- Complete Premium Aluminum Arm Set
- Debris Covers for Pivot Castings
- Rubber Bumpers
- All Necessary Components for Installation

OPTIONAL ACCESSORIES:

- Reverse Polarity Super Switch Kit
- Tarp Housing or Aluminum or Steel Wind Deflector
- **Motor:** 60:1 Tomahawk, 1.5 Hp
- **Motor:** 90:1 Heavy Duty Enforcer, 2.0 Hp
- **Motor:** 60:1 Super Heavy Duty Drone, 2.0 Hp
- Arms With Out Bend

For more images of parts and options view the Replacement parts on page 34



K-RSK



K-TOMAHAWK



K-ATA93



K-ENFORCER2.0



K-APACHE



K-STRB

PART NUMBER	DESCRIPTION
K-GLCCK	Replace the electric with ground control manual
K-TOMAHAWK	Tomahawk Tarp Motor 60:1 1.5 hp 3 year warranty
K-ENFORCER2.0	ENFORCER HD Tarp Motor. 90:1. 2.0hp. 5 year Warranty
K-DRONE	DRONE Super HD Tarp Motor. 60:1. 2.0hp. 5 year Warranty
K-AWDK or K-AWDK94	Aluminum Wind Deflector. Cut to Fit.
K-SWDK	Steel Wind Deflector. Two Piece Adjustable.
K-98AH OR K-92AH	92" or 98" Aluminum Enclosed Housing.
K-AHSBA	Housing Support Braces.
K-RPSS or K-RPSS2	Reverse Polarity Super Switch Kit. 2 = Weather Resistant
K-CP	Replaces 30' of wire with contact plates

REPLACEMENT PARTS

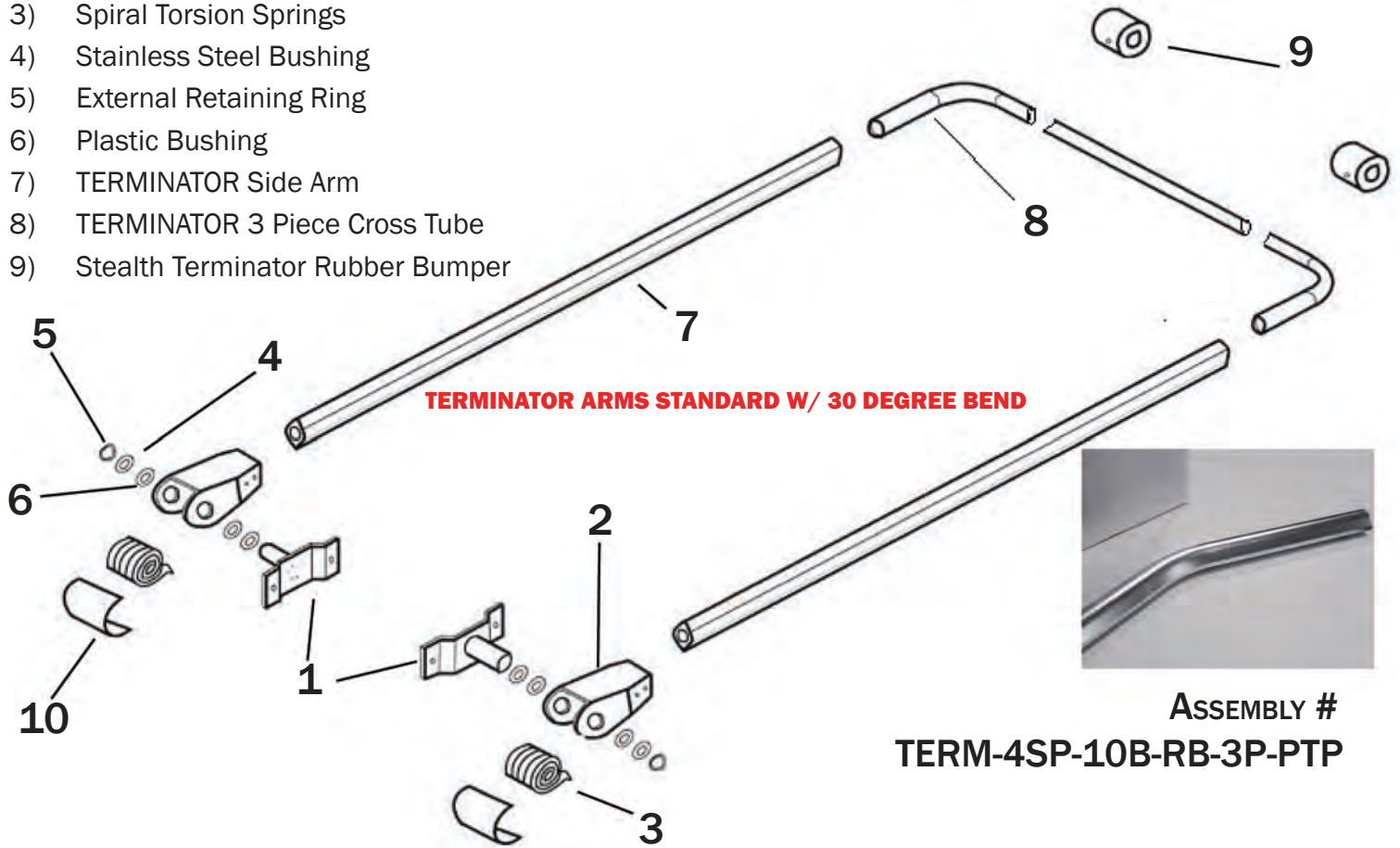
Part No.	Description
K-TPP4SPA	4 Spring Pivot Pin
K-TPFBC	Plastic Flange Bushing
K-ST5	Spiral Torsion Spring
K-ERR	External Retaining Ring
K-ATA103	HD Extruded Tarp Axle
K-ABWF	Axle Bearing w/ Flanges
K-SS	Axle Stud Shaft

Part No.	Description
K-TERM4SPC	4 Spring Pivot Casting
K-SA10	10' Unbreakable Arm, Straight
K-BA10	10' Unbreakable Arm, w/ Bend
K-TSCT983	TERMINATOR 3-Piece Cross Tube
K-STRB	Stealth Terminator Rubber Bumper
K-TERMPCC	Pivot Casting Debris Cover

"Doing Tarping Systems the Right Way"

"TERMINATOR" ARM SET PARTS BREAKDOWN

- 1) Pivot Pin
- 2) Pivot Casting
- 3) Spiral Torsion Springs
- 4) Stainless Steel Bushing
- 5) External Retaining Ring
- 6) Plastic Bushing
- 7) TERMINATOR Side Arm
- 8) TERMINATOR 3 Piece Cross Tube
- 9) Stealth Terminator Rubber Bumper



ASSEMBLY #
TERM-4SP-10B-RB-3P-PTP

1



K-TPP4SP

2



K-TERMPC4SPC

3



K-ST5

4



K-SSB

5



K-ERR

6



K-TPFBC

7



**K-SA10
K-BA10**

8



K-T90C

9



K-STRB

10



K-TERMPCC



UP TO 40'

“TERMINATOR” UNDERBODY



Premium Underbody Mount Electric Kit

Our **TERMINATOR** Underbody is a premium aluminum Tarping System with extruded aluminum lower arms powered by our **Tomahawk** or heavy duty **ENFORCER** direct drive motor for dump bodies up to 40' long. Arms over 12' are coupled in two pieces to reduce the cost of replacing the arm when a loader bumps into it. This way you only need to replace one 10' or 12' piece instead of paying for shipping a 20' solid arm piece.



Kit #: **TERM-UB10 / TERM-UB20**

Tarp not included. See Tarps on Page 1

STANDARD FEATURES:

- Rotary Switch Kit
- 6g Dual Connector Wire
- 12v Motor w/ **3 or 5-yr wty**
- Fully Adjustable Tarp Axle
- Complete **Premium** Aluminum Arm Set
- Rubber Bumpers
- All Necessary Components for Installation
- 3-piece Steel Cross Tube

OPTIONAL ACCESSORIES:

- Reverse Polarity Super Switch Kit
- Tarp Housing or Aluminum or Steel Wind Deflector
- **Motor:** 90:1 Heavy Duty Enforcer, 2.0 Hp
- **Motor:** 60:1 Super Heavy Duty Drone, 2.0 Hp
- Arms w/No Bend

For more images of parts and options view the Replacement parts on page 34



PART NUMBER	DESCRIPTION
K-GLCCK	Replace the electric with ground control manual
K-ENFORCER2.0	ENFORCER HD Tarp Motor. 90:1. 2.0hp. 5 year Warranty
K-DRONE	DRONE Super HD Tarp Motor. 60:1. 2.0hp. 5 year Warranty
K-AWDK or K-AWDK94	Aluminum Wind Deflector. Cut to Fit.
K-SWDK	Steel Wind Deflector. Two Piece Adjustable.
K-98AH OR K-92AH	92" or 98" Aluminum Enclosed Housing.
K-AHSBA	Housing Support Braces.
K-RPSS or K-RPSS2	Reverse Polarity Super Switch Kit. 2 = Weather Resistant
K-CP	Replaces 30' of wire with contact plates
K-A30CA or K-A45CA	30 or 45 Degree Elbow Inserts
K-TARPTEN	Tarp Tension Arm Assembly [See Page 21]

REPLACEMENT PARTS

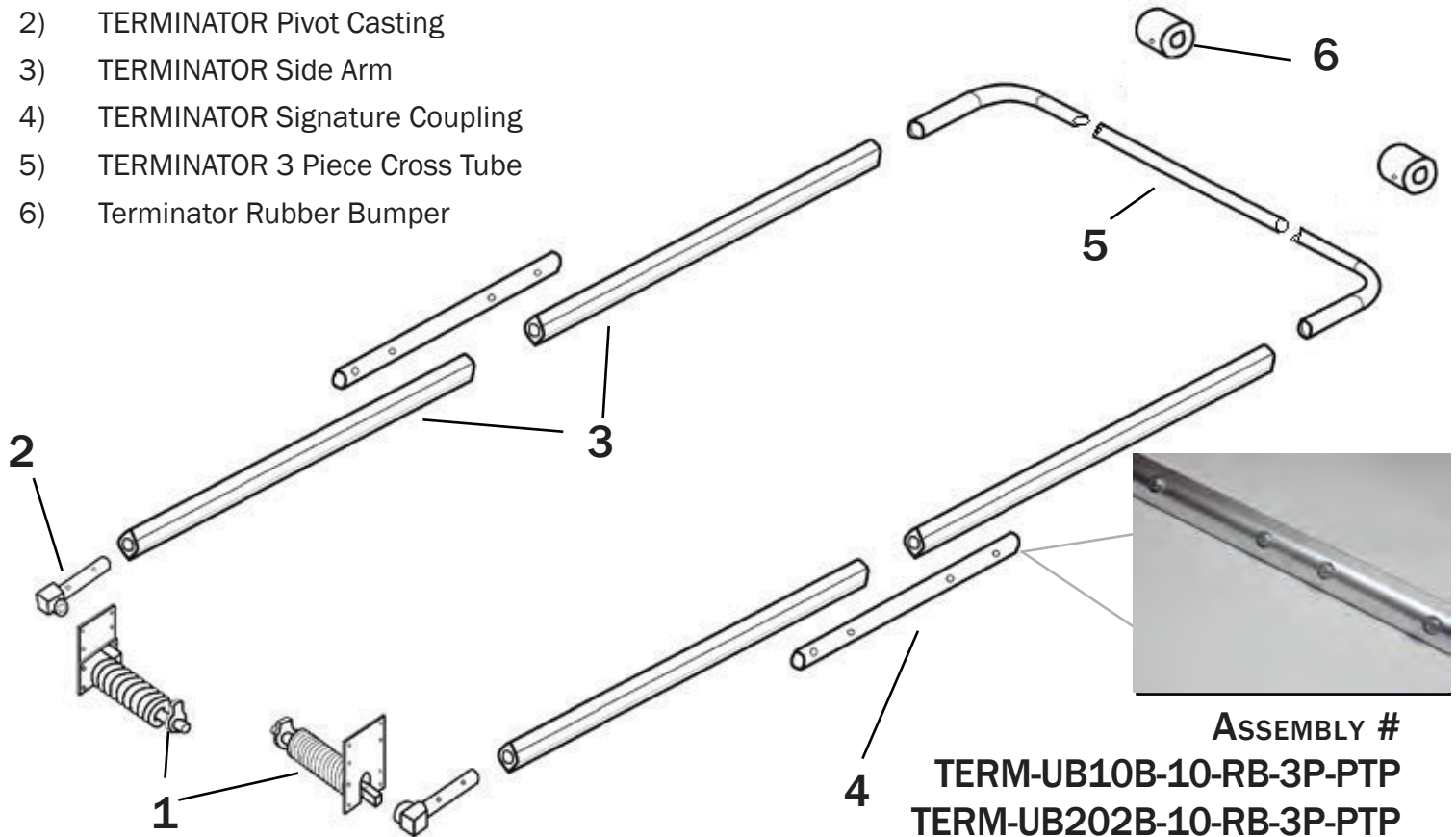
Part No.	Description
K-UBSD10	Driver Side Spring
K-UBSP10	Passenger Side Spring
K-TUBPC	TERMINATOR Pivot Casting
K-ATA93	Fully Adjustable Tarp Axle
K-ABWF	Axle Bearing
K-SS	Axle Stud Shaft
K-ATSMBXL	XL Tarp Spool Mounting Bracket

Part No.	Description
K-SA10	10' Straight Arm
K-SA12	12' Straight Arm
K-TCT	TERMINATOR Coupling Tube
K-TSCT102	1 Piece Cross Tube
K-STRB	Stealth terminator rubber bumper
K-TSCT1023	3 Piece Cross Tube

"Doing Tarping Systems the Right Way"

"TERMINATOR" UNDERBODY ARM SET PARTS BREAKDOWN

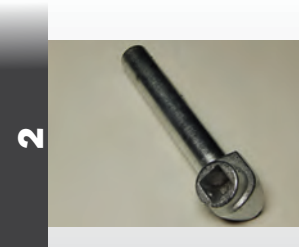
- 1) Underbody Spring
- 2) TERMINATOR Pivot Casting
- 3) TERMINATOR Side Arm
- 4) TERMINATOR Signature Coupling
- 5) TERMINATOR 3 Piece Cross Tube
- 6) Terminator Rubber Bumper



on trailers above 34' we recommend purchasing assist springs



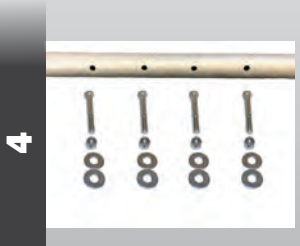
1
K-UBSD10
K-UBSP10



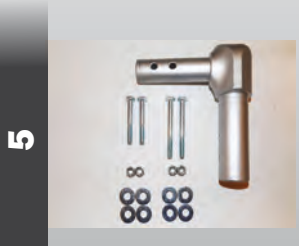
2
K-TUBPC



3
K-SA10
K-SA12



4
K-TCTWH



5
K-T90C



6
K-STRB

Why the two-piece arm?

In the past the standard arms were one long 20' stick. What we found is that a 20' arm gets damaged the same as a 10' arm when a loader slams into it.

Then we realized that we could save our customers a lot of money by offering a 'compartmentalized' arm. They work just the same and cost half as much to repair when the loader hits!

Ask your rep about 20' Side Arms if you need them.



UP TO 28'

“STEALTH”

Steel 4 and 5 Spring Electric Kit

Our **STEALTH** is a premium galvanized steel arm Tarping System with external mounted spiral torsion springs, galvanized rust-resistant steel arms, complete bolt-on assembly, no welding needed, and is powered by our **Apache Slim** or **Tomahawk** direct drive motor. This system is designed for dump bodies up to 28'.



Kit #: **STH-4SP / STH-5SP**

Tarp not included. See Tarps on Page 1

STANDARD FEATURES:

- Rotary Switch Kit
- 6g Dual Connector Wire
- 12v Apache Slim Motor w/ **3-yr wty**
- Fully Adjustable Aluminum Tarp Axle
- Complete Steel Arm Set
- Stealth Tarp Centering Flanges
- All Necessary Components for Installation

OPTIONAL ACCESSORIES:

- Reverse Polarity Super Switch Kit
- Tarp Housing, Aluminum or Steel Wind Deflector
- **Motor:** 60:1 Tomahawk, 1.5 Hp
- **Motor:** 90:1 Heavy Duty Enforcer, 2.0 Hp
- **Motor:** 60:1 Super Heavy Duty Drone, 2 Hp
- Custom Ordered 30 Degree Bends In Arms

For more images of parts and options view the Replacement parts on Page 34



PART NUMBER	DESCRIPTION
K-GLCCK	Replace the electric with ground control manual
K-TOMAHAWK	Tomahawk Tarp Motor 60:1 1.5 hp 3 year warranty
K-ENFORCER2.0	ENFORCER HD Tarp Motor. 90:1. 2.0hp. 5 year Warranty
K-DRONE	DRONE Super HD Tarp Motor. 60:1. 2.0hp. 5 year Warranty
K-AWDK or K-AWDK94	Aluminum Wind Deflector. Cut to Fit.
K-SWDK	Steel Wind Deflector. Two Piece Adjustable.
K-98AH OR K-92AH	92" or 98" Aluminum Enclosed Housing.
K-AHSBA	Housing Support Braces.
K-RPSS or K-RPSS2	Reverse Polarity Super Switch Kit. 2 = Weather Resistant
K-CP	Replaces 30' of wire with contact plates

REPLACEMENT PARTS

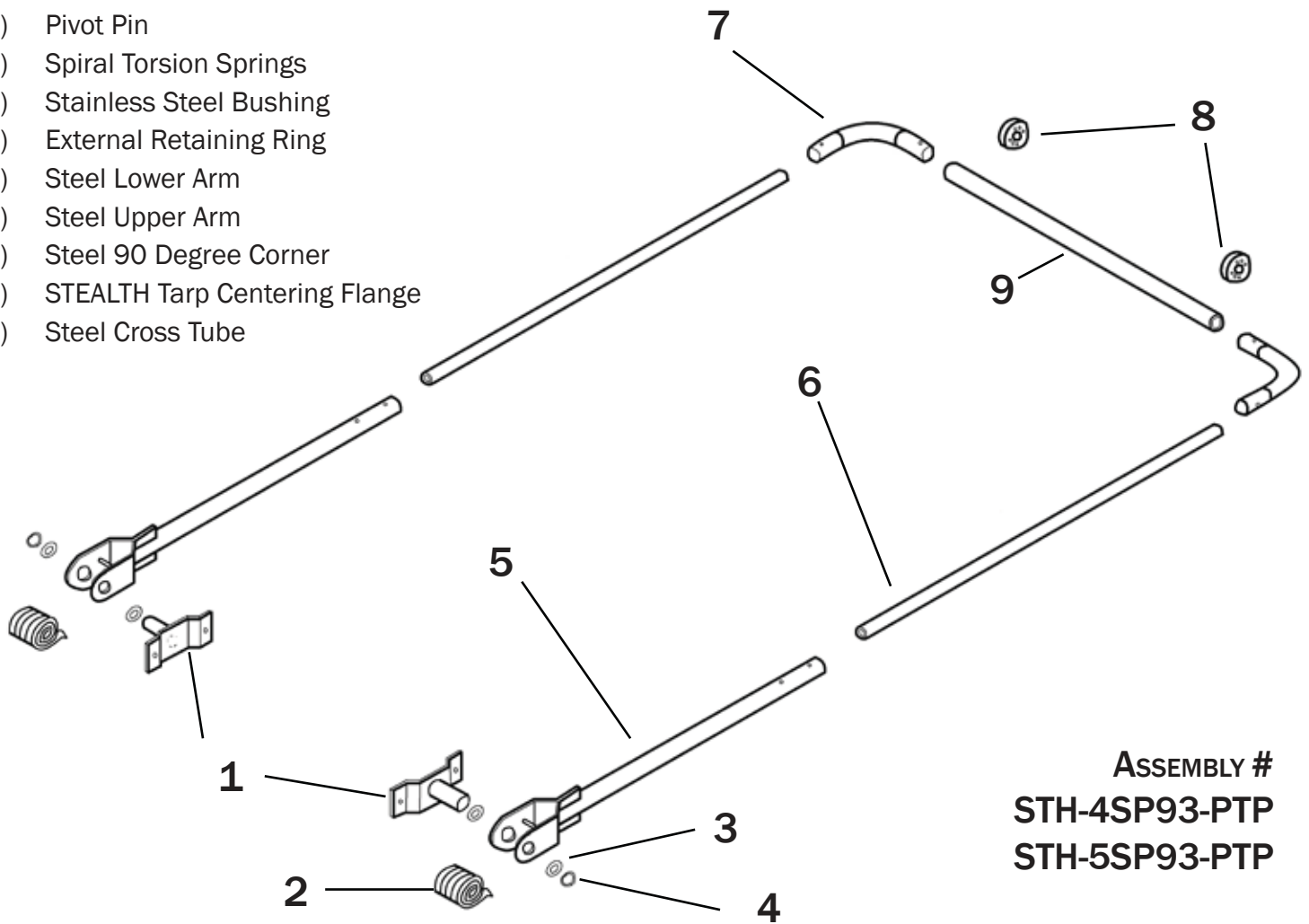
Part No.	Description
K-PP4SPA	4 Spring Pivot Pin
K-PP5SPA	5 Spring Pivot Pin
K-STC	Spiral Torsion Spring
K-ERR	External Retaining Ring
K-ATA93	Fully Adjustable Aluminum Tarp Axle
K-ABWF	Axle Bearing w/ Flanges
K-SS	Axle Stud Shaft

Part No.	Description
K-SLA493	4 Spring Steel Lower Arm
K-SLA593	5 Spring Steel Lower Arm
K-SUA93	Steel Upper Arm
K-SCT	Steel Cross Tube
K-S90CA	Steel 90 Degree Corner
K-STCF	STEALTH Tarp Centering Flange

"Doing Tarping Systems the Right Way"

CRANK HANDLE BREAKDOWN

- 1) Pivot Pin
- 2) Spiral Torsion Springs
- 3) Stainless Steel Bushing
- 4) External Retaining Ring
- 5) Steel Lower Arm
- 6) Steel Upper Arm
- 7) Steel 90 Degree Corner
- 8) STEALTH Tarp Centering Flange
- 9) Steel Cross Tube



ASSEMBLY #
STH-4SP93-PTP
STH-5SP93-PTP

1



K-PP4SP
K-PP5SP

2



K-ST5

3



K-SSB

4



K-ERR

5



K-SLA493
K-SLA593

6



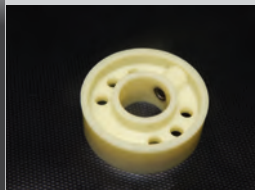
K-SUA93

7



K-S90C

8



K-STCF

9



K-SCT93

*Here's
 Something!*
 See an
 example of the
 Tarp Spool for
 this kit on
 page 19



UP TO 40'

GROUND LEVEL

Ground Level Manual Controls

Our manual ground level kit is a ground operated Tarping System that comes with polished aluminum, premium aluminum, or galvanized steel pivot arms for dump bodies of all sizes. Kits ordered with this part number variation can be easily converted to an electric system!



Opt. #: Add "GL" to Kit #

Tarp not included. See Tarps on Page 1

STANDARD FEATURES:

- Crank Box With Internal Break
- Fully Adjustable Tarp Axle
- Complete Arm Set
- All Necessary Components for Installation
- All Non-electric Standard Features from Each Kit's Page Apply To the Ground Level

OPTIONAL ACCESSORIES:

- Chain Guard
- Tarp Housing or Aluminum or Steel Wind Deflector
- All Non-electric Options from Each Kit's Page Apply To the Ground Level.

For more images of parts and options view the Replacement parts on Page 34



K-ATSMB

K-AWDK & K-AWDK94

K-ATA93

K-92AH & K-98AH

K-CG36A

K-AHSB

PART NUMBER	DESCRIPTION
All non-electric options apply from each kit's base page	
K-CG36A	36" Chain Guard.
K-AWDK or K-AWDK94	Aluminum Wind Deflector. Cut to Fit.
K-SWDK	Steel Wind Deflector. Two Piece Adjustable.
K-98AH OR K-92AH	92" or 98" Aluminum Enclosed Housing.
K-AHSBA	Housing Support Braces.

REPLACEMENT PARTS

Part No.	Description
All Non-Electric Parts Apply	
K-CBGL1	Crank Box w/ Internal Break
K-SB14	14" Sprocket Bar
K-C#40	Ground Level Chain
K-CG36A	36" Chain Guard
K-ATA93	Fully Adjustable Tarp Axle 93"-110"
K-ABWF	Axle Bearing w/ Flanges

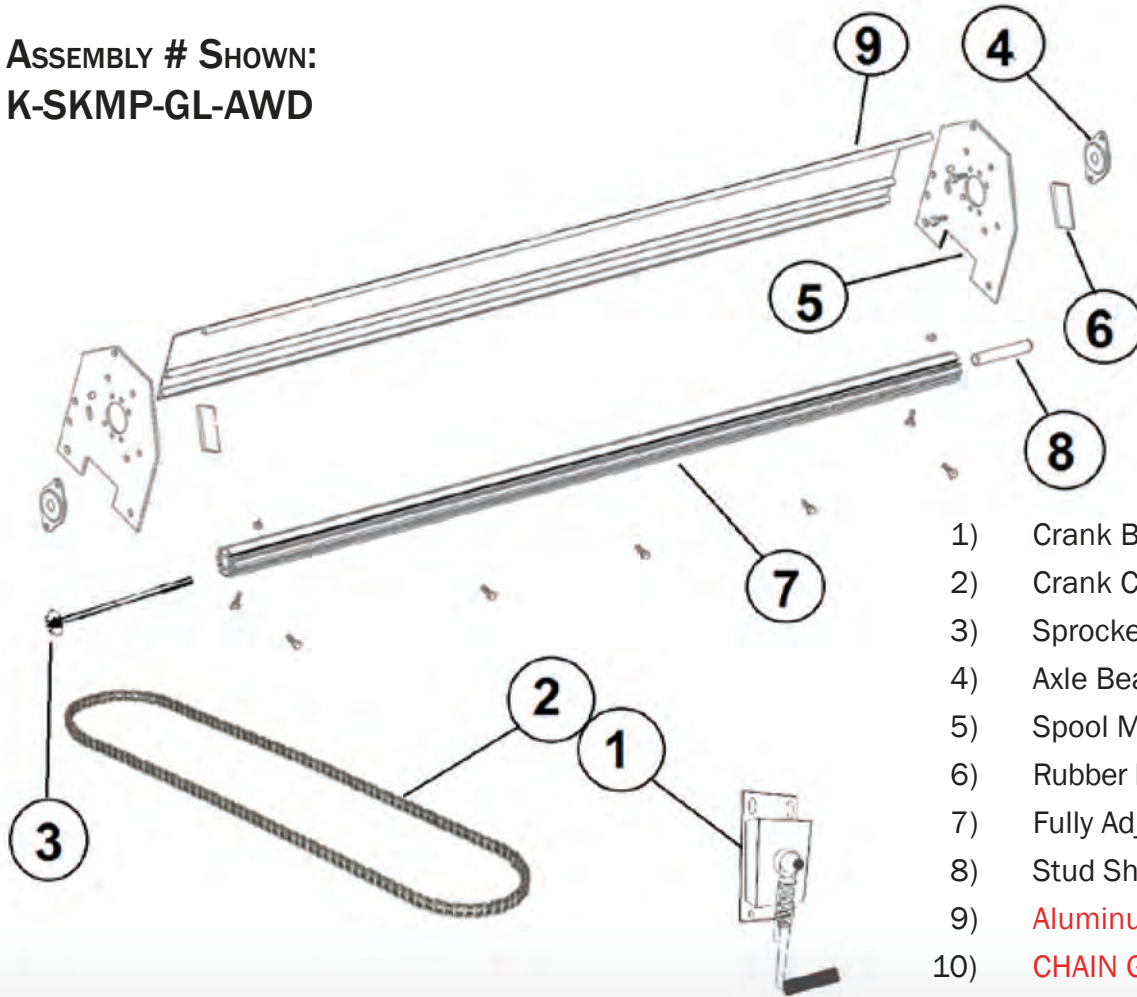
Electric Conversion is Simple

Converting your manual kit to an electric kit is as simple as adding wire, a switch, and a motor. If you want to save some money up front, this is a great option. Start with a ground level crank, and convert to electric later.

“Doing Tarping Systems the Right Way”

GROUND LEVEL PARTS BREAKDOWN

ASSEMBLY # SHOWN:
K-SKMP-GL-AWD



- 1) Crank Box
- 2) Crank Chain
- 3) Sprocket Bar
- 4) Axle Bearing
- 5) Spool Mounting Bracket
- 6) Rubber Bumper for Mounting Plate
- 7) Fully Adjustable Aluminum Tarp Axle
- 8) Stud Shaft
- 9) Aluminum Wind Deflector
- 10) CHAIN GUARD 36

1



K-CBGL1

**spring loaded systems only*

2



K-C#40

3



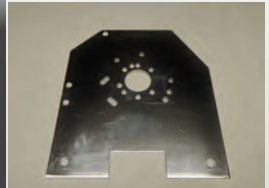
K-SB14

4



K-ABWF

5



K-ATSMB

6



K-RBMP

7



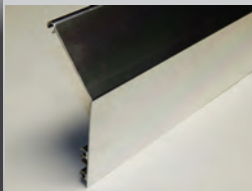
K-ATA93

8



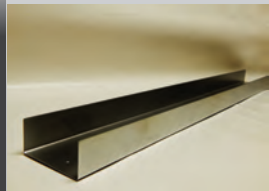
K-SS

9



**K-AWDK &
K-AWDK94**

NOT SHOWN



K-CG36A



UP TO 30'

“SLINGSHOT™”

Self Retracting Pull Style Kit

The SlingShot™ is a modern front to back dump truck Tarping System. It is a semi automatic and easy to use kit with a simple pull feature. Use the rope to pull the tarp over the load, and when you're finished slowly release the rope and the spring loaded tarp axle will retract the tarp for you. The spring loaded axle is easily adjustable from 78" up to 102" wide **-TARP ARMS NOT REQUIRED-**



Kit #: K-SLINGSHOT

Tarp not included. See Tarps on Page 1

STANDARD FEATURES:





- Strong, Lightweight Extruded Spring Loaded Aluminum Tarp Axle
- Adjustable Steel Tarp Housing
- 24' Nylon Pull Rope and Box Hooks
- Pull Bar Assembly With Aluminum End Foot Caps and Pull Bar Retainers
- Sliding Adjustable tube from 78" up to 102" wide.
- Preassembled And Ready for Install.

OPTIONAL ACCESSORIES:

- Compatible Arm Sets To Raise the Tarp Over the Load

For more images of parts and options view the Replacement parts on Page 34

SYSTEM NO.	DESCRIPTION
K-SLINGSHOTWH	Self Retracting Pull Style System with Adjustable Housing
PART NUMBER	DESCRIPTION
K-TARPTEN	Tarp Tensioner Assembly
STH-4SP93-PTP-NS	STEALTH Springless Arm Set. Up to 23'
PAT-4SP78-PTP-NS	PATRIOT Springless Arm Set. Up to 23'
PAT-4SP93-PTP-NS	PATRIOT Springless Arm Set Up to 23'

	
K-SSTA	K-SCLPBA94 & K-SCLPBA98
	
K-SSC	K-SSSH

You will be glad to know that our SlingShot with adjustable housings are pre-assembled less tarp.

REPLACEMENT PARTS

Part No.	Description
K-SSTA	SlingShot™ Tarp Axle
K-SSSH	SlingShot Steel Housing
K-CABLST	Steel Pull Bar
K-AEFC	Pull Bar End Caps
K-RETAIN01	Pull Bar Retainer
K-HOOK02	J-Hook

Add An Arm Set

Some people don't like dragging the tarp over the top of the load, especially people hauling asphalt. We offer springless arm sets that will lift the tarp over the load while maintaining the simple pull feature of the SlingShot

"Doing Tarping Systems the Right Way"

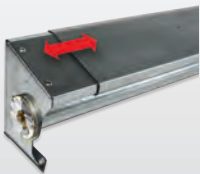
"SLINGSHOT™" PARTS BREAKDOWN

- 1) Slingshot adjustable Housing
- 2) Slingshot Tarp Axle
- 3) Steel Pull Bar
- 4) Aluminium end foot cap
- 5) Pull bar retainer
- 6) Snapper pin



ASSEMBLY # SHOWN:
K-SLINGSHOT

1



K-SSSH

2



K-SSTA

3



**K-SCLPB94 &
K-SCLPB98**

4



K-AEFC

5



K-RETAIN01

6



K-PIN01

Did you Know...

That the Slingshot 2021 is adjustable from 78" all the way up to 102"?

The process is extremely easy!
Just slide weld and bolt.



“CRANK AND PULL”

Cab Level Crank Tarp System

Our **CRANK AND PULL** kit is a manual cab level crank kit that is perfect for landscape trailers and medium/light duty truck bodies. This kit is the answer to our partners looking for the most affordable, easiest to operate, nothing in the way Tarping System.



Kit #: **K-CABLCK**

Tarp not included. See Tarps on Page 1

STANDARD FEATURES:

- Manual Wind-up
- Expands from 60" To 104" Wide
- Fits Any Body Length
- Quick And Easy Tarp Replacement

OPTIONS:

- Ground Level Conversion
- Steel Pull Bar Assembly With Aluminum Foot Caps (T-CABLCK2)

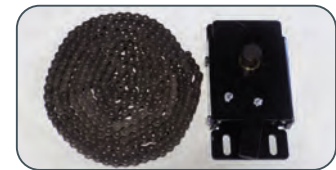
SYSTEM NO.	DESCRIPTION
K-CABLCK	Manual Crank Kit. Cab Level. No Pull Bar or Retainers.
K-CABLCK298	Manual Crank Kit. Cab Level. Includes Steel Pull Bar Assembly, Retainers, Box Hooks, and Pull Rope. 98"
K-CABLCK3	Manual Crank Kit. Cab Level. Includes ground level crank, Retainers, Box Hooks, and Pull Rope.
K-CABLCK4	Manual Crank Kit. Cab Level. Includes GROUND LEVEL CRANK, Steel Pull Bar Assembly, Retainers, Box Hooks, and Pull Rope.
K-CABLCK294	Manual Crank Kit. Cab Level. Includes Steel Pull Bar Assembly, Retainers, Box Hooks, and Pull Rope. 94"



For more images of parts and options view the Replacement parts on Page 34

Dump Body Walls Too High?

The K-CABGLCK brings the crank handle from the cab level to the ground level for safer and easier use



***K-CBGL3 K-CBGL2

REPLACEMENT PARTS

Part No.	Description
K-CABLCH	Cab Level Crank Handle
K-CABAS1	Cab Level Sprocket
K-CABL SCT	Steel Pull Bar
K-AEFC	Pull Bar End Caps
K-RETAIN01	Pull Bar Retainer
K-DCLB	Driver Side Mounting Bracket
K-CABLATA	Cab Level Axle

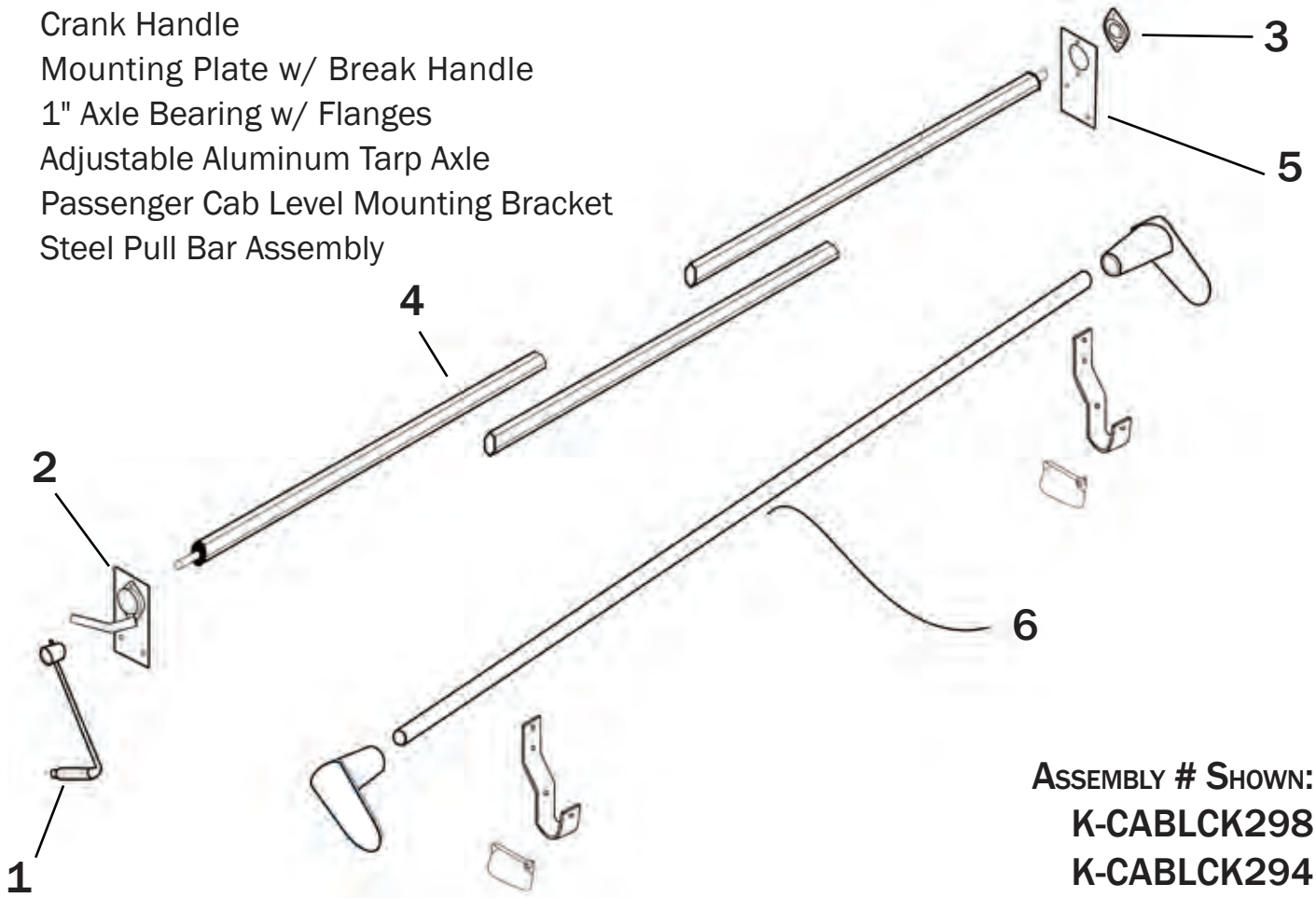
Just in case!

The “Crank And Pull” cannot be converted to an electric external mount kit or spring loaded arms. If you think you might want to go electric one day, ask your rep about options that can be converted.

“Doing Tarping Systems the Right Way”

“CRANK AND PULL” PARTS BREAKDOWN

- 1) Crank Handle
- 2) Mounting Plate w/ Break Handle
- 3) 1" Axle Bearing w/ Flanges
- 4) Adjustable Aluminum Tarp Axle
- 5) Passenger Cab Level Mounting Bracket
- 6) Steel Pull Bar Assembly



ASSEMBLY # SHOWN:
K-CABLCK298
K-CABLCK294



This kit is designed to work for small dump trailers up to large dump trucks.

It is very similar to other cab level crank style kits. Placed side-by-side, you probably wouldn't notice the difference!



UP TO 40'

TARP SPOOL KITS

ELECTRIC CONVERSION SPOOL KIT

The **Tarp Spool Kit** contains every component you need to replace an existing front end, or add a new front end to any trailer or truck. Our **Tarp Spool Kits** are compatible with every manufacturer that uses spring powered arm sets.



Assembly #: K-SKMP

Tarp not included. See Tarps on Page 1

STANDARD FEATURES:

- 6g Dual Connector Wire
- Rotary Switch Kit
- Fully Adjustable Aluminum Tarp Axle
- APACHE Tarp Motor
- Aluminum Tarp Spool Mounting Brackets
- Axle Bearing With Flanges
- Stud Shaft

OPTIONAL ACCESSORIES:

- Reverse Polarity Super Switch Kit
- Motor Options
- Additional Feet Of Wire
- Tarp Housing or Aluminum or Steel Wind Deflector
- Extra Large Mounting Brackets for Oversized Tarps

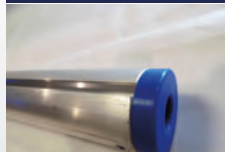
For more images of parts and options view the Replacement parts on page 34



K-RSK



K-W6G



K-ATA93



K-CP



K-APACHE

PART NUMBER	DESCRIPTION
K-AWDK or K-AWDK94	Aluminum Wind Deflector. Cut to Fit.
K-SWDK	Steel Wind Deflector. Two Piece Adjustable.
K-98AH OR K-92AH	92" or 98" Aluminum Enclosed Housing.
K-AHSBA	Housing Support Braces.
K-RPSS or K-RPSS2	Reverse Polarity Super Switch Kit. 2 = Weather Resistant
K-CG36A	36" Chain Guard
K-CP	Replaces 30' of wire with contact plates

REPLACEMENT PARTS

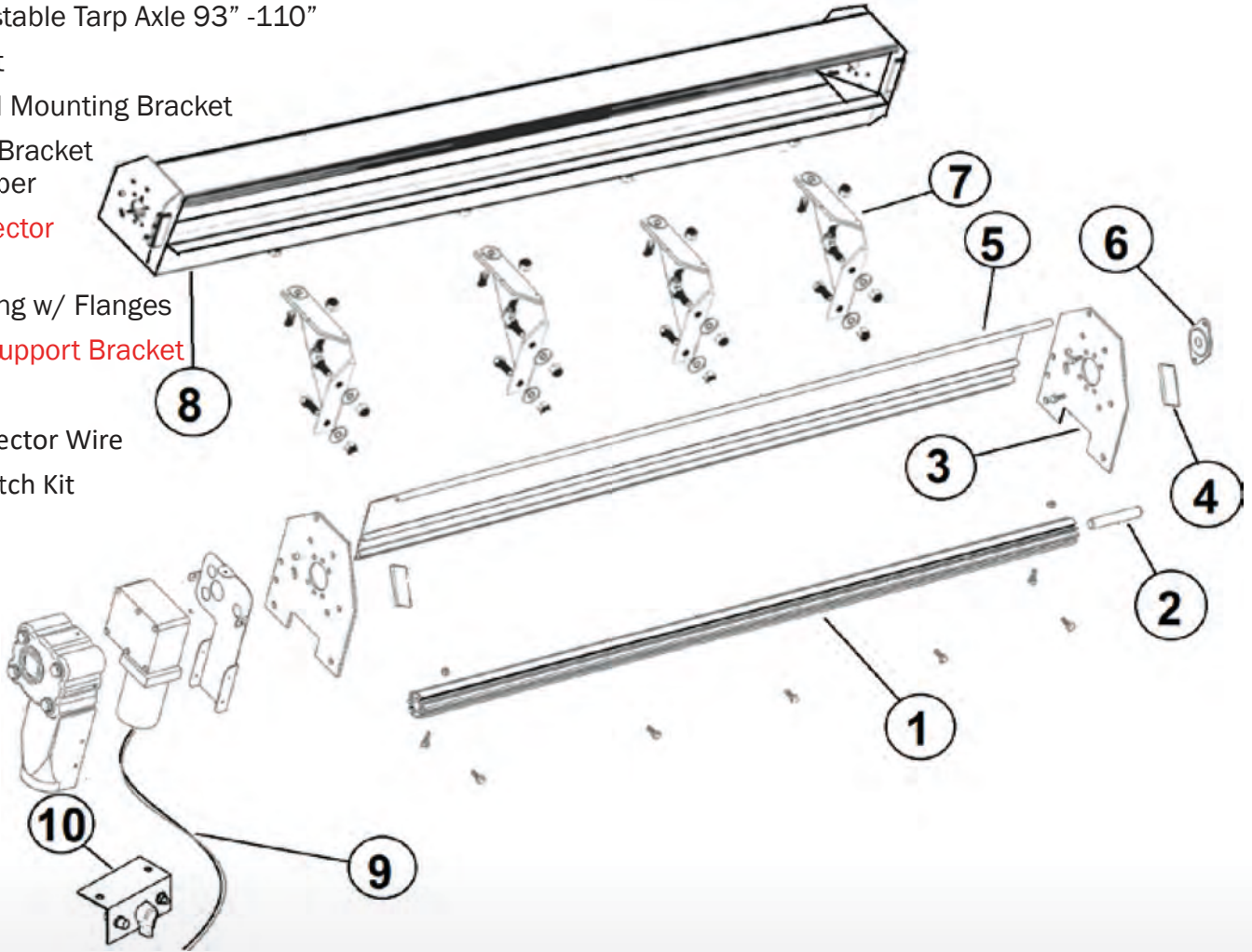
Part No.	Description
K-RSK	Rotary Switch Kit
K-RPSS	Super Switch Kit
K-RPSS2	Weather Resistant Super Switch Kit
K-RS0	Rotary Switch, Only
K-RPS	Reverse Polarity Solenoid
K-RPS2	Weather Resistant RP Solenoid
K-RS	Rocker Switch, Only

Part No.	Description
K-W6G	6 Gauge Wire, Per Foot
K-C#40	Ground Level Crank Chain
K-ATSMB	Tarp Spool Mounting Bracket
K-ATA93	Fully Adjustable Tarp Axle
K-CBGL	Crank Box for SKMP-GL
K-CP	Contact Plate Set

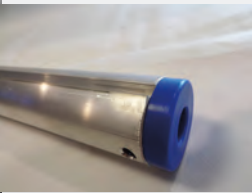
"Doing Tarping Systems the Right Way"

TARP SPOOL KITS PARTS BREAKDOWN

- 1) Fully Adjustable Tarp Axle 93" -110"
- 2) Stud Shaft
- 3) Tarp Spool Mounting Bracket
- 4) Mounting Bracket
Rubber Bumper
- 5) Wind Deflector
-Optional
- 6) Axle Bearing w/ Flanges
- 7) Housing Support Bracket
- 8) Housing
- 9) Dual Connector Wire
- 10) Rotary Switch Kit



1



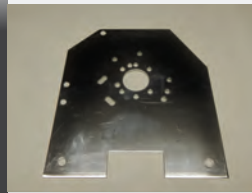
K-ATA93

2



K-SS

3



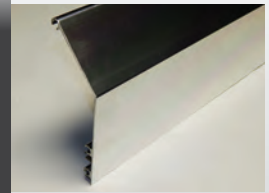
K-ATSMB

4



K-RBMP

5



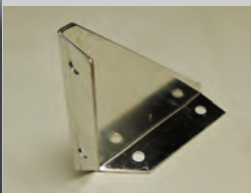
**K-AWDK &
K-AWDK94**

6



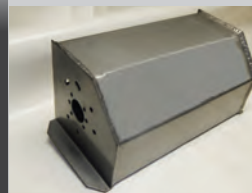
K-ABWF

7



K-AHSB

8



**K-92AH or
K-98AH**

9



K-W6G

10



K-RSK



“PATRIOT” TENSIONER

Front to Back Secondary Arm

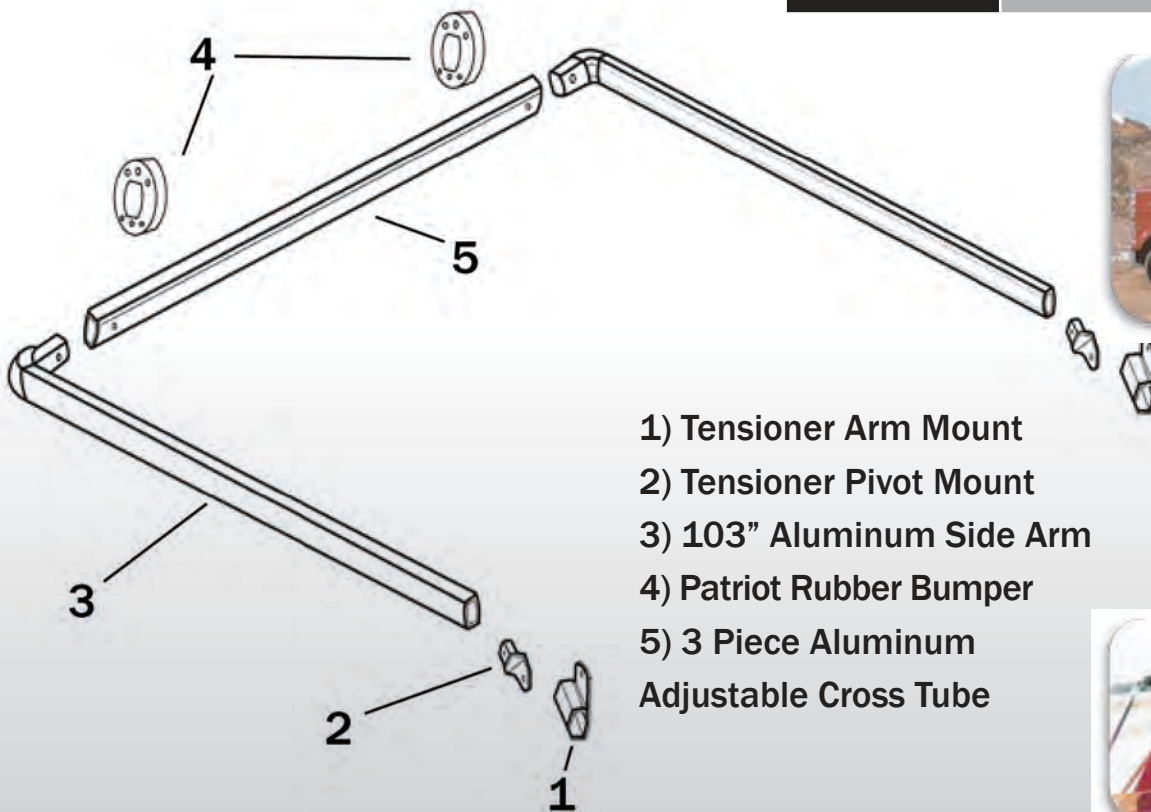
Our **PATRIOT** Tensioner is used to keep the tarp pressed tight against the load. Mostly used in applications with a long drop from the tarp spool to the top rail of the dump body.



ASSEMBLY NO.	DESCRIPTION
K-TARPTEN	103” PATRIOT Tarp Tensioner

PART NO.	DESCRIPTION
K-TTB	Arm Mount
K-TTBC	Pivot Mount
K-PRB	Patriot Rubber Bumper

PART NO.	DESCRIPTION
K-ASAWC103	103” side arm with corner
K-A90C	Aluminum 90 Degree Elbow
K-ACT93/110	3 Piece Aluminum Adjustable Cross Tube



- 1) Tensioner Arm Mount
- 2) Tensioner Pivot Mount
- 3) 103” Aluminum Side Arm
- 4) Patriot Rubber Bumper
- 5) 3 Piece Aluminum Adjustable Cross Tube



1		2		3		4		5	
K-TTB		K-TTBC		K-ASAWC103		K-PRB		K-ACT93/110	

"Doing Tarping Systems the Right Way"

UP TO 28'

"ASSASSIN R/O"

Roll Off Dumpster Covering System

The **ASSASSIN R/O** is the Roll Off Dumpster variant of the Standard **ASSASSIN**. The **R/O** is a waterproof Tarping System for roll off containers. This system will fit 20yd, 30yd, & 40yd roll off boxes and every size in between. The tarp rolls from one side to the other, all from ground level for ease of handling. Improve safety, save time, and save money with our **Assassin R/O**.



Kit #: **CONKIT**

STANDARD FEATURES:

- Standard Heavy Duty Bows
- Standard Tarp Stops
- Compact Crank Handle that can be conveniently stored in the cab of a truck.

OPTIONAL ACCESSORIES:

- Quick Release Tarp Stops
- Various material and color options for tarp
- Reinforced Steel Tarp Bows
- Nylon 'Flex Bows'
- Container Kit Tarp

For more images of parts and options view the Replacement parts on page 34



SYSTEM NO.	DESCRIPTION
CONKIT-12	Container kit for dumpster length 12'
CONKIT-16	Container kit for dumpster length 16'
CONKIT-18	Container kit for dumpster length 18'
CONKIT-20	Container kit for dumpster length 20'
CONKIT-22	Container kit for dumpster length 22'
Kits are based on dumpster length	
Sizes listed are examples. We offer kits for all lengths of dumpsters.	
PART NO.	DESCRIPTION
K-STOPSWA	EZ Off Aluminum Tarp Stop. 3" Offset
K-STOPOC	EZ Off Aluminum Tarp Stop. 6" Offset
K-STOPRC	EZ Off Rubber Tarp Stop. 3" Offset
K-BOW13	1 1/4 Inch Reinforced Steel Tarp Bow
K-FLEXBOW101	Flex Bow Assembly

REPLACEMENT PARTS

Part No.	Description
K-CRANKRO	R/O Crank Assembly
K-SQCOG	Square Cog Attachment
K-RETURN02	Return Bungee Assembly
K-BOW12	1" Bow Assembly
K-STOP01	Standard Tarp Stop
K-PIPE08	2" dia Roll Tube. 10'
K-PIPE09	1 1/8" dia Fixed Tube. 10'

KYM WEAVE

Tarping USA is the only brand in the industry that carries our trademarked **KYM WEAVE** Mesh. This mesh is not your usual polyester covered in PVC. Ask us why it's better.



UP TO 53'

“ASSASSIN”

Standard Side Roll Setup

The **ASSASSIN** offers dependable, watertight protection to cover your load. Seat belt webbing and reinforced stitching along edges increase tear resistance and helps the tarp withstand the stresses of highway speeds. The standard galvanized steel crank arm lets you operate the Tarping System safely from the ground.



Kit #: EDSRK / GTSRK

STANDARD FEATURES:

- Ratchet Straps
- Standard Tarp Stops
- Tarp Bows
- Fabric End Caps (Based on Trailer)
- Appropriate Crank Handle, Retainers, and All Hard ware.

OPTIONAL ACCESSORIES:

- “Lok-Rail” Latch Plate
- Color options and varying material of tarp
- Easy-Off Tarp Stops: Rubber and Aluminum
- Reinforced Steel Tarp Bows
- Nylon ‘Flex Bows’
- Aluminum End Caps

For more images of parts and options view the Replacement parts on page 34



END DUMP SYSTEM NO.	DESCRIPTION
ASSN-ED-L-30	End Dump Side Roll Kit for 30' Trailer with Lok Rail
ASSN-ED-R-30	End Dump Side Roll Kit for 30' Trailer with Ratchets
ASSN-ED-L-40	End Dump Side Roll Kit for 40' Trailer with Lok Rail
ASSN-ED-R-40	End Dump Side Roll Kit for 40' Trailer with Ratchets
ASSN-ED-L-50	End Dump Side Roll Kit for 50' Trailer with Lok Rail
ASSN-ED-R-50	End Dump Side Roll Kit for 50' Trailer with Ratchets
Sizes listed are examples. We offer kits for all lengths of trailer. We do not offer all systems with NO BOWS	
OPEN TOP SYSTEM NO.	DESCRIPTION
ASSN-OT-L-30	Open Top Side Roll Kit for 30' Trailer with Lok Rail
ASSN-OT-R-30	Open Top Side Roll Kit for 30' Trailer with Ratchets
ASSN-OT-L-40	Open Top Side Roll Kit for 40' Trailer with Lok Rail
ASSN-OT-R-40	Open Top Side Roll Kit for 40' Trailer with Ratchets
ASSN-OT-L-50	Open Top Side Roll Kit for 50' Trailer with Lok Rail
ASSN-OT-R-50	Open Top Side Roll Kit for 50' Trailer with Ratchets

REPLACEMENT PARTS

Part No.	Description
K-BOW12	1" Bow Assembly
K-STOP01	Standard Tarp Stop
K-PIPE08	2" dia Roll Tube. 10'
K-PIPE09	1 1/8" dia Fixed Tube. 10'
K-UC01	Nylon U-Clamp
K-UC02	U-Clamp Screw
K-LR8	'Lok Rail' Latch Plate

Part No.	Description
K-CRANK01	Splined Crank Assembly
K-CRANK1854	Splined Breaking Crank
K-SPLINE02	Spline Shaft Connector
K-SQCOG	Square Cog Attachment
K-RETURN02	Return Bungee Assembly
K-PBRA9	9' Hold Down Assembly
K-CRANK12	RTS Crank Assembly

"Doing Tarping Systems the Right Way"

UP TO 53'

"ELECTRO-SASSIN"

Electric Conversion for "ASSASSIN"

This **ELECTRO-SASSIN** is an addition to the standard **ASSASSIN** that allows the driver to operate their side roll Tarping System, load, and unload right from the comfort and safety of the cab. This kit offers the piece of mind of a conventional side roll kit, but the ease of use of an electric system.



Add "E" to ASSASSIN Kit #

STANDARD FEATURES:

- Flex Arm for end dump applications
- Rotary Style Switch
- All options from the standard ASSASSIN apply
- 6g Dual Connector Wire

OPTIONAL ACCESSORIES:

- Cost effective Half Electric kits
- Weatherproof Reverse Polarity Switch Kit
- Wireless Remote Control
- All options from the standard ASSASSIN apply
- Contact Plate Set

For more images of parts and options view the Replacement parts on page 34



K-RSK



K-STOPRC



Electric Arm



K-RPSS2



K-LR8



K-WRBA

SYSTEM NO.	DESCRIPTION
EDSRK-38/40-E	End Dump Side Roll Kit for 38' To 40' End Dump. Elec.
EDSRK-42/44-E	End Dump Side Roll Kit for 42' To 44' End Dump. Elec.
EDSRK-46/48-E	End Dump Side Roll Kit for 46 To 48' End Dump. Elec.
GTSRK-30/32-E	Grain Trailer Side Roll Kit for 30 To 32' Open Top Van. Elec.
GTSRK-34/36-E	Grain Trailer Side Roll Kit for 34 To 36' Open Top Van. Elec.
GTSRK-38/40-E	Grain Trailer Side Roll Kit for 38/40' Open Top Van. Elec.

Sizes listed are examples. We offer kits for all lengths of trailer.

OPTION NO. (ADD)	DESCRIPTION
RPSS or RPSS2	Reverse Polarity Super Switch Kit. 2 = Weather Resistant.
RETURN02	Bungee Return Assembly. Substitute for Rear Arm
FLEXA	Flex Arm for End Dump Applications
CP	Replaces 30' of wire with contact plates

All Options from the Standard ASSASSIN Apply

REPLACEMENT PARTS

Part No.	Description
K-BOW12	1" Bow Assembly
K-STOP01	Standard Tarp Stop
K-PIPE08	2" dia Roll Tube. 10'
K-PIPE09	1 1/8" dia Fixed Tube. 10'
K-UC01	Nylon U-Clamp
K-UC02	U-Clamp Screw
K-LR8	'Lok Rail' Latch Plate

Part No.	Description
K-RSK	Rotary Switch Kit
K-W6G	6 Gauge Wire. Per Foot
K-ESLA	Standard Lower Arm
K-FLEXA	Rear Flex Arm



CRANK HANDLES

ASSASSIN Crank Handle Assemblies

This page will help you find the **Crank Handle Assembly** that best fits your needs. If you have high sides, low sides, end dump, or swing gates you'll be able to find the **Crank Handle Assembly** that works best for you on your Tarping System!



Assembly #: K-CRANK

Crank Retainers not included

STANDARD FEATURES:

- Galvanized steel construction
- Pre-assembled
- Durable high impact plastic grips
- RTS or L-Series Crank Handle
- Galvanized Steel Extension

OPTIONAL ACCESSORIES:

- Non-Assembled for bulk shipment of stock orders

Need Crank Handle Retainers?

We offer a wide range of Crank Handle Retainers to keep your handle secure. See all of our Crank Retainer options in the replacement parts section on page 34

For more images of parts and options view the Replacement parts on page 34



Max Length represents the maximum length that can be achieved by that part number. Combinations of crank handles and extensions may vary based on availability.

PART NUMBER	DESCRIPTION
K-CRANK01	L-Series Splined Crank Assembly. Max Length: 95"
K-CRANK01-B	L-Series Splined Crank Assembly. Max Length: 117"
K-CRANK01-C	L-Series Splined Crank Assembly. Max Length: 143"
K-CRANK12	RTS Square Key Crank Assembly. Max Length: 131"
K-CRANK1840	L-Series Splined Flex Crank Assembly. Max Length: 89"
K-CRANK1854	L-Series Splined Flex Crank Assembly. Max Length: 103"
K-CRANKRO	L-Series Square Key Crank handle. Max Length: 30"

REPLACEMENT PARTS

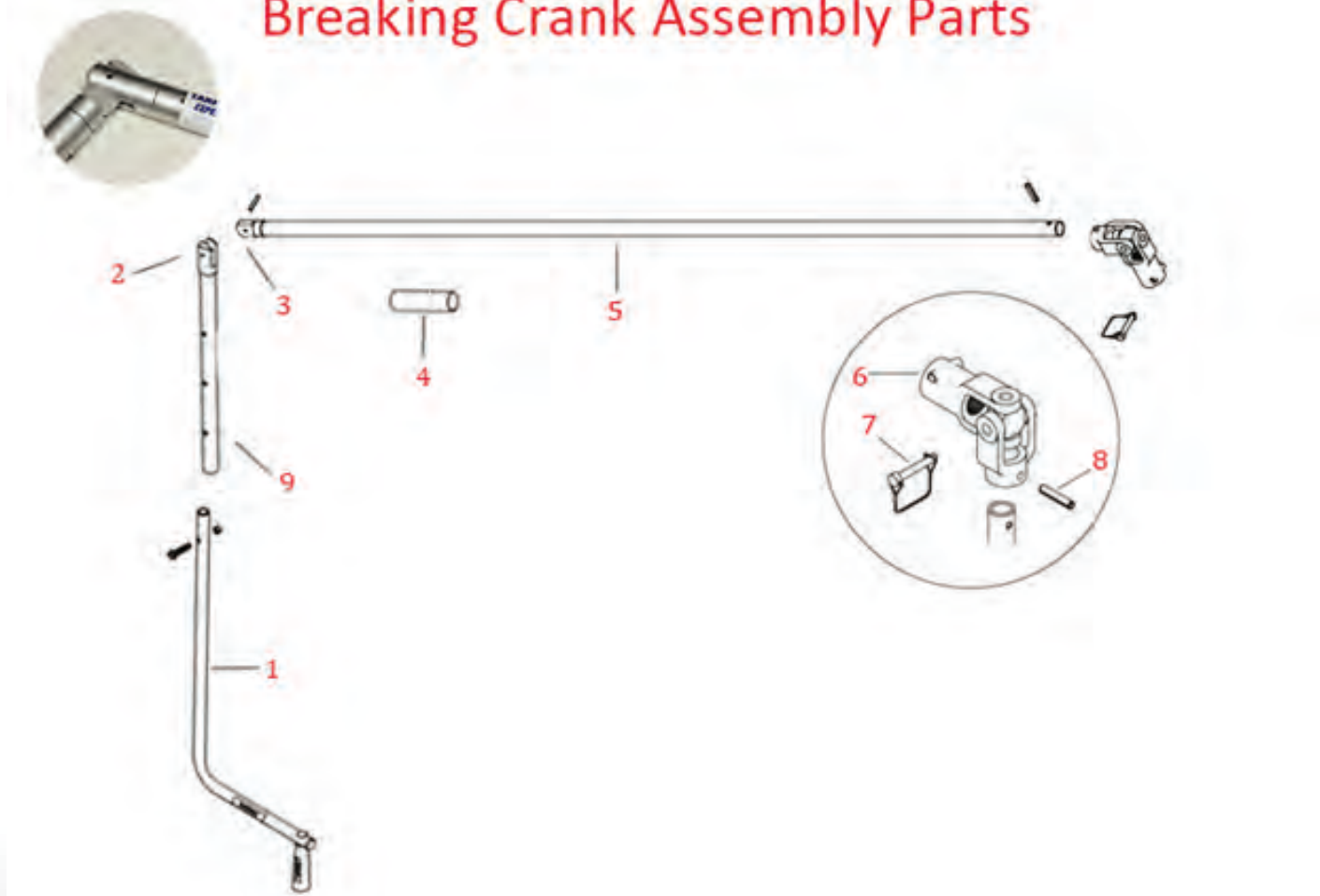
Part No.	Description
K-CRANK02	Long L-Series. 31.5"
K-CRANK03	Long L-Series. 65"
K-CRANK05	RTS Crank Handle. 80"
K-CRANK07	80" Extension
K-CRANK07-96	96" Extension
K-CRANK17	Slide Lock Tube

Part No.	Description
K-CRANK15	Male Knuckle
K-CRANK16	Female Knuckle
K-PIN01	Snapper Pin
K-CRANK14B	Square Key w/ Point
K-CRANK6	L-Series Plastic Handle
K-CRANK21	Handle Bolt

“Doing Tarping Systems the Right Way”

CRANK HANDLE BREAKDOWN

Breaking Crank Assembly Parts



K-CRANK1840

- 1) K-CRANK02
(31.5" Handle)
- 2) K-CRANK16
- 3) K-CRANK15
- 4) K-CRANK17
- 5) K-CRANK20
(40" Extension)
- 6) K-UJ02
- 7) K-PIN01
- 8) K-PINBAG
- 9) K-CRANK19
(20" Extension)

K-CRANK1854

- 1) K-CRANK02
(31.5" Handle)
- 2) K-CRANK16
- 3) K-CRANK15
- 4) K-CRANK17
- 5) K-CRANK54
(54" Extension)
- 6) K-UJ02
- 7) K-PIN01
- 8) K-PINBAG
- 9) K-CRANK19
(20" Extension)

K-CRANK1880

- 1) K-CRANK02
(31.5" Handle)
- 2) K-CRANK16
- 3) K-CRANK15
- 4) K-CRANK17
- 5) K-CRANK07
(80" Extension)
- 6) K-UJ02
- 7) K-PIN01
- 8) K-PINBAG
- 9) K-CRANK19
(20" Extension)

K-CRANK1896

- 1) K-CRANK02
(31.5" Handle)
- 2) K-CRANK16
- 3) K-CRANK15
- 4) K-CRANK17
- 5) K-CRANK08
(96" Extension)
- 6) K-UJ02
- 7) K-PIN01
- 8) K-PINBAG
- 9) K-CRANK19
(20" Extension)

See replacement parts section for individual parts pictures.



L-Series Crank Assembly



K-CRANK01 (80"-100")

- 1) K-CRANK06
- 2) K-CRANK02
(31.5" Handle)
- 3) K-CRANK07
(80" Extension)
- 4) K-UJ02
- 5) K-PIN01
- 6) K-PINBAG

K-CRANK01-B (119"-133")

- 1) K-CRANK06
- 2) K-CRANK03
(65" Handle)
- 3) K-CRANK07
(80" Extension)
- 4) K-UJ02
- 5) K-PIN01
- 6) K-PINBAG

K-CRANK01-C (133"-149")

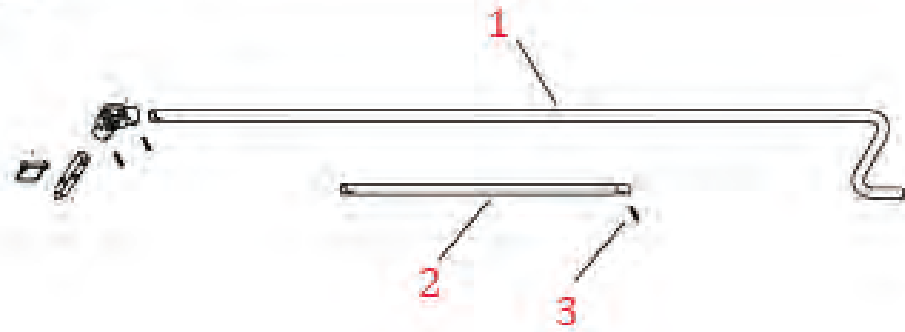
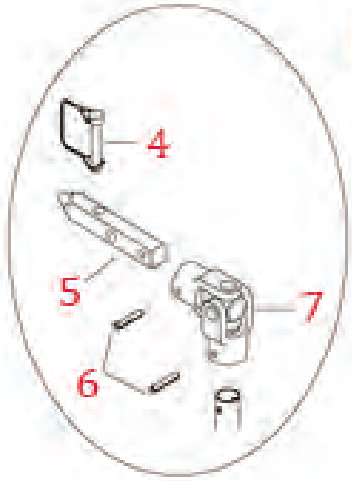
- 1) K-CRANK06
- 2) K-CRANK03
(65" Handle)
- 3) K-CRANK08
(96" Extension)
- 4) K-UJ02
- 5) K-PIN01
- 6) K-PINBAG

See replacement parts section for individual parts pictures.

“Doing Tarping Systems the Right Way”

CRANK HANDLE BREAKDOWN

RTS Crank Assembly



1



K-CRANK05

2



K-CRANK12-EXT

3



BOLT

4



K-PIN01

5



K-CRANK14

6



K-PINBAG

7

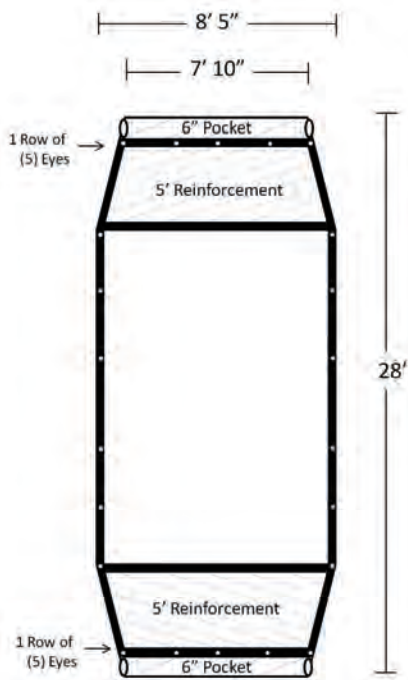


K-UJ02

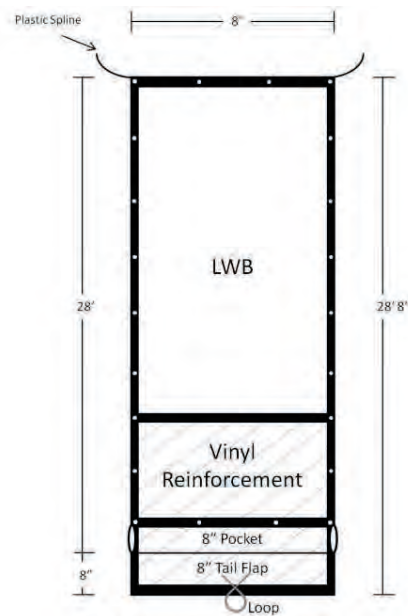


AUTO TARPS FOR WASTE TRUCKS

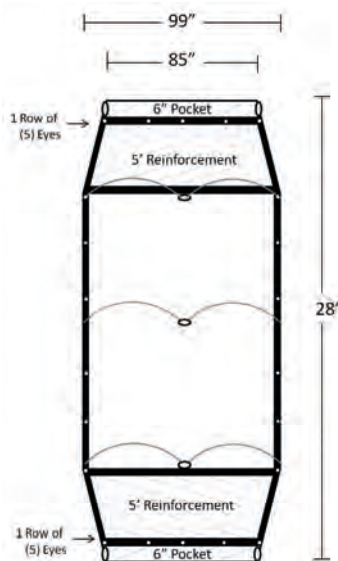
K-28RP



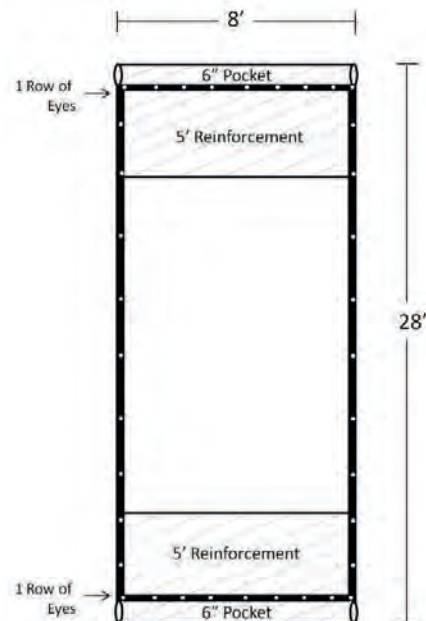
K-28HYTOWERG



K-UT28PM4500V55



K-UT828V55



KYM Industries
 "We Cover Your Load"

29 888-577-5218

www.KYMindustries.com



UP TO 28'

Tarping USA

TarpingUSA

Kym Industries Heavy Duty Truck Division

Ratchet Strap Assemblies

Our ratchet strap assemblies are made with 2" yellow cargo webbing with a breaking strength of 10,000 lbs. These also come standard with a 2" wide long handle ratchet with a breaking strength of 11,000 lbs for maximum leverage with less user fatigue. These heavy-duty straps meet DOT regulations and WSTDA recommended standards with a working load limit of 3,333 lbs. There are two different styles of ratchet straps shown below.

K-215RAJH



2" X 15' RATCHET ASSEMBLY,
WITH J HOOK ON EACH END

K-230RAJH



2" X 30' RATCHET ASSEMBLY,
WITH J HOOK ON EACH END

K-215RAFH



2" X 15' RATCHET ASSEMBLY,
WITH FLAT HOOK ON EACH END.

K-227RAFH



2" X 27' RATCHET ASSEMBLY,
WITH FLAT HOOK ON EACH END.

Don't see a size or fastener type you need? We can custom build almost any size to your specifications.

Give us a call today at (888) 577-5218 or email us at sales@kymindustries.com



TarpingUSA

Kym Industries Heavy Duty Truck Division

Bungee Straps with S-hooks

Our Heavy-Duty rubber tarp straps come pre-assembled with zinc-plated S-Hooks attached on each end. They have superior elasticity and low-temperature flexibility. These straps are perfect for securing your tarp to your truck or trailer.

K-15" STRAPS



15" Rubber Straps with S-Hooks attached to each end. 50 per box

K-21" STRAPS



21" Rubber Straps with S-Hooks attached to each end. 50 per box

K-31" STRAPS



31" Rubber Straps with S-Hooks attached to each end. 50 per box

K-41" STRAPS



41" Rubber Straps with S-Hooks attached to each end. 50 per box

Turf Green Covers

TURF COVERS

4.2oz Black Turf Covers

We offer breathable golf green and turf covers that are made from a UV treated woven polypropylene that is specially engineered for the growth of turf. The unique weave creates a greenhouse effect to warm the soil but allows the grass to breathe and the right amount of water to pass through. With this simple combination you get deeper root development, quicker growth and thicker turf. Excellent multipurpose cover for winter protection, early greening, new construction or rebuilding of turf.



Turf Green Cover Enlarged

Our golf green covers are custom made to order and to any size. We offer untouchable prices and untouchable quality. Our covers come standard with a 3 layer reinforced edge and lock stitched seams for maximum durability. Covered by an 8 year limited warranty!

Formula	92.5% Prime Polypropylene 6.00% Black Color Concentrate 1.50% UV Additive	
Thread	Warp: Split Film Denier: 950 Width: 1.5mm	Weft: Split Film Denier: 950 Width: 2.8mm
Strength	200 x 120	
Weave	16 x 10 Threads/Inch	
Weight	4.2 oz/yd	
Tear	104 x 105	

Permeability	15
Color	Black
Mils	17
U.V. Resistance	2 Years under direct sun light

Call for Pricing and Availability








Call 888-577-5218 for additional information

Tarping USA Replacement Parts


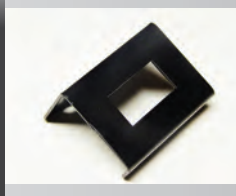



33

ELECTRICAL COMPONENTS

<p>K-APACHE</p> 	<p>K-TOMAHAWK</p> 	<p>K-ENFORCER</p> 	<p>K-DRONE</p> 	<p>K-CMC</p> 
<p>Apache Slim 50:1. 1.5 hp. 3yr war</p>	<p>Tomahawk 60:1. 1.5 hp. 3yr war</p>	<p>HD Enforcer 2.0 90:1. 2.0 hp. 5yr war</p>	<p>Super HD Drone 60:1. 2.0 HP. 5yr wty</p>	<p>Plastic Motor cover w/ chrome appearance</p>

<p>K-W6G</p> 	<p>K-CB40APB</p> 	<p>K-CB50</p> 	<p>K-RSK</p> 	<p>K-RSO</p> 
<p>6 gauge dual wire</p>	<p>40 amp push button circuit breaker</p>	<p>50 amp breaker</p>	<p>Rotary switch kit</p>	<p>Rotary switch</p>

<p>K-MP</p> 	<p>K-RPSS</p> 	<p>K-RPSS2</p> 	<p>K-RPS</p> 	<p>K-RPS2</p> 
<p>Rotary switch mounting plate</p>	<p>Reverse polarity super switch kit</p>	<p>Reverse polarity weatherproof switch kit.</p>	<p>Reverse polarity solenoid</p>	<p>Reverse polarity solenoid</p>


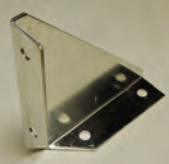



<p>K-RS</p> 	<p>K-RSB</p> 	<p>K-CP</p> 	<p>K-WBRA</p> 	<p>K-DPPH</p> 
<p>Rocker switch</p>	<p>Rocker switch bracket</p>	<p>Contact plate set</p>	<p>Wireless Control Box</p>	<p>Dual Pole Plug Horizontal</p>

<p>K-DPSH</p> 	<p>K-DPPV</p> 	<p>K-DPSV</p> 	<p>K-W3W16</p> 	<p>K-AT SMB</p> 
<p>Dual Pole Socket Horizontal</p>	<p>Dual Pole Plug Vertical</p>	<p>Dual Pole Socket Vertical</p>	<p>16 GA. 3 Way Wire</p>	<p>Tarp Spool Mounting Bracket</p>






Tarp Spool (cont)

<p>K-ATA93</p> 	<p>K-SS</p> 	<p>K-ABWF</p> 	<p>K-AWDK & K-AWDK94</p> 	<p>K-SWDK</p> 
<p>Fully Adjustable Aluminum Tarp Axle</p>	<p>Stud shaft</p>	<p>Axle bearing, 3/4"</p>	<p>Aluminum wind deflector</p>	<p>Steel wind deflector</p>

SlingShot™

<p>K-92AH & K-98AH</p> 	<p>K-AHSB</p> 	<p>K-SSTA</p> 	<p>K-SCLPBA94 & K-SCLPBA98</p> 	<p>K-SSTSMB</p> 
<p>Aluminum housing</p>	<p>Housing support bracket</p>	<p>SlingShot tarp axle</p>	<p>Pull Bar Assembly</p>	<p>SlingShot Mounting Bracket</p>

Manual Control

<p>K-SSC</p> 	<p>K-CBGL1</p> 	<p>K-C#40</p> 	<p>K-SB14</p> 	<p>K-CBGL2</p> 
<p>SlingShot Shaft Cap</p>	<p>Ground level crank box Spring Loaded System Only</p>	<p>Ground level crank chain</p>	<p>14" sprocket bar</p>	<p>Manual Brake Crank Box Cab level only</p>






<p>K-CLCH</p> 	<p>K-CG36A</p> 	<p>K-CABLSCT</p> 	<p>K-AEFC</p> 	<p>K-DCLB</p> 
<p>Cab level crank handle</p>	<p>Chain guard</p>	<p>Cab level steel cross tube</p>	<p>Pull bar end foot caps</p>	<p>Driver side cab level bracket</p>

<p>K-CAB-ABWF1</p> 	<p>K-PCLB</p> 	<p>K-CABLATA</p> 	<p>PATRIOT K-SSB</p> 	<p>K-ERR</p> 
<p>Axle bearing . 1"</p>	<p>Passenger side cab level bracket</p>	<p>Cab level tarp axle</p>	<p>Stainless steel bushing</p>	<p>External retaining ring</p>

Tarping USA Replacement Parts

35





PATRIOT EXTERNAL (CONT.)

<p>K-ST5</p> 	<p>K-ALA478 & K-ALA493</p> 	<p>K-ALA593</p> 	<p>K-ASAWC93</p> 	<p>K-A30C or A45C</p> 
<p>Spiral torsion spring</p>	<p>78" or 93" 4 spring lower arm</p>	<p>5 spring aluminum lower arm</p>	<p>Aluminum side arm w/ corner</p>	<p>Aluminum 30 or 45 degree elbow</p>

<p>K-A90CA</p> 	<p>K-ACT93/110</p> 	<p>K-PRB</p> 	<p>K-PP5SPA</p> 	<p>K-PP4SPA</p> 
<p>Aluminum 90 degree corner</p>	<p>3 Piece Adjustable Cross Tube</p>	<p>Patriot Rubber Bumper</p>	<p>5 Spring Pivot Pin</p>	<p>4 Spring Pivot Pin</p>

TERMINATOR

<p>K-T90CA</p> 	<p>K-ABWF1C</p> 	<p>K-TPFBC</p> 	<p>K-SA10 or BA10</p> 	<p>K-TERMPC4SP</p> 
<p>TERMINATOR 90 degree corner for 3 piece cross tube</p>	<p>1" Cast Flange Bearing</p>	<p>Plastic flange bushing</p>	<p>TERMINATOR lower arm. 10'</p>	<p>4 spring pivot casting</p>

<p>K-TERMPCC</p> 	<p>K-TPP4SP2</p> 	<p>K-TRB</p> 	<p>K-TUBPC</p> 	<p>K-SCT</p> 
<p>Pivot casting cover</p>	<p>TERMINATOR external pivot pin</p>	<p>TERMINATOR rubber bumper</p>	<p>TERMINATOR Underbody Pivot Casting</p>	<p>Steel cross tube</p>

PATRIOT UNDERBODY

<p>K-AUBLA84</p> 	<p>K-AUBLA144</p> 	<p>K-UBSD10</p> 	<p>K-UBSP10</p> 	<p>K-AUBPC</p> 
<p>PATRIOT Underbody lower arm. 84"</p>	<p>PATRIOT Underbody lower arm. 144"</p>	<p>Underbody 10 Spring Assembly. Driver Side</p>	<p>Underbody 10 Spring Assembly. Passenger Side</p>	<p>PATRIOT Underbody Pivot Casting</p>

STEALTH STEEL

K-SLA493



93" 4 spring steel lower arm

K-SLA593



5 spring steel lower arm

K-SUA



Steel upper arm

K-S90C



Steel 90 degree corner

K-STCF



STEALTH tarp centering flange

Tarp Stops

K-STOP01



Standard Tarp Stop

K-STOPAU



3" Aluminum Tarp Stop

K-STOPOAU



6" Aluminum Tarp Stop

K-STOPR



3" Rubber Tarp Stop

K-STOPRO



6" Rubber Tarp Stop

K-STOPSWA



3" Aluminum Tarp Stop Assembly

K-STOPOC



6" Aluminum Tarp Stop Assembly

K-STOPRC



3" Rubber Tarp Stop Assembly

K-STOPROC



6" Rubber Tarp Stop Assembly

K-STOPBS



EZ Off Stop Bracket

Crank Retainers

K-PIN06



Clevis Pin

K-PIN08



Clevis Pin Ring

K-RETAIN01



Single Retainer

K-RETAIN03



Spring Lock Single Retainer

K-RETAIN02



7" Offset Pinless Swivel Crank Retainer

Return Assembly

K-RETAIN06



Pinless Crank Retainer

K-PIN01



Snapper Pin

K-RETURN01



Return Rope. 12' for RETURN02

K-RETURN03



Return end plug

K-RETURN04



Return eye bolt

Tarping USA Replacement Parts

37

K-RETURN06



**Return PVC tube
10'. May include
coupling**

K-RETURN02



**Complete Bungee
Return Assembly**

K-RETURNRD



**Complete Wire
Return Assembly**

Fixed Tube and Roll Pipe

K-CONN01



**1 1/8" Fixed Tube
Connector**

K-PIPE09



**1 1/8" Fixed Tube.
10'**

K-CONN02



**2" Roll Tube
Connector**

K-PIPE08



2" Roll Tube. 10'

K-PIPE10



**2" Roll Tube. 10'
w/ Spline**

K-PIPE11



**2" Roll Tube. 10'
w/ Square Cog**

K-UC01



**2" Roll Tube Nylon
U-Clamp**

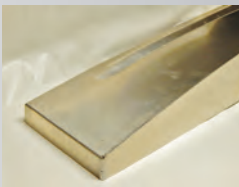
K-PIPE07



1 1/2" Ridge Pipe

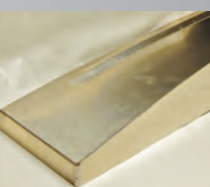
End Caps

K-CAPA



**Aluminum Front
End Cap**

K-CAPA-B



**Aluminum Rear
End Cap**

K-CAPF02



**18oz Vinyl Front
End Cap**

K-CAPF02 -B



**18oz Vinyl Rear
End Cap**

Tarp Bows

K-BOW02



**3/4" Bow Shank
For 1" Bow**

K-BOW03



**3/4" Bow Bracket
For 1" Bow**

K-BOW11



**1" Bow w/ one
shank welded**

K-BOW18



**1" Bow
w/ two shanks**

K-BOW12



1" Bow Assembly

K-BOW21



**1" Bow Bracket
For 1 1/4" Bow**

K-BOW08



**1" Bow Shank
For 1 1/4" Bow**

K-BOW19-1



**1 1/4" Bow w/
one shank welded**

K-BOW19



**1 1/4" Bow
w/ two shanks**

K-BOW13



**1 1/4" Bow
Assembly**

K-FLEXBOW101



Flexbow Assembly

K-FLEXBOW0101



Flex Bow

K-FBAL



Aluminum Flexbow Bracket

Hold Downs and Ridge Straps

K-LR8



Aluminum 'Lok Rail' Latch Plate. 8' Span

K-LR216



Aluminum 'Lok Rail' Latch Plate. 21' 6" Span

K-RAT06



1" Ratchet with Hook

K-RAT05



1" Ratchet with Flat Plate

K-STRAP1-46WH



1" Strap with Hook. 46'

K-STRAP1-46FP



1" Strap with Flat Plate. 46'

K-STRAP1-46WH



1" Ridge Strap Set with Hook. 46'

K-RATBR



2" Ratchet Bracket Only

K-F2WRH



2" Wide Handle Ratchet. Ratchet Only

K-STRAP1-46FP



1" Ridge Strap Set with Flat Plate. 46'

K-FRATLWH



2" Ratchet with Bracket

K-RAT04



2" Ratchet with Hook

K-RAT03



2" Ratchet with Flat Plate

K-29DR



2" PBR Roll Tube Strap with D-Ring. 9'

K-STRAP2-46WH



2" Strap with Hook. 46'

K-STRAP2-46FP



2" Strap with Flat Plate. 46'

K-STAPA2-46WH



2" Ridge Strap Set with Hook. 46'

K-STRAP2-46FP



2" Ridge Strap Set with Flat Plate. 46'

K-PBRA9



2" PBR Roll Tube Hold Down Set. 9'

Crank Handle Assemblies

K-CRANK01



L-Series Splined Crank Assembly

K-CRANK01B



L-Series Splined Crank Assembly

K-CRANK01C



L-Series Splined Crank Assembly

Tarping USA Replacement Parts

39

Crank Handle Replacements

K-CRANK12



RTS Square Crank Assembly

K-CRANK18-40



L-Series Splined Flex Crank Assembly

K-CRANK18-54



L-Series Splined Flex Crank Assembly

K-CRANKRO



30" L-Series Square Crank Assembly

K-CRANK02



L-Series Crank Arm. 31.5"

Crank Handle Parts

K-CRANK03



L-Series Crank Arm. 65"

K-CRANK05



RTS Crank Arm. 80"

K-CRANK-12EXT



60" extension tube for RTS

K-CRANK07



80" Extension for the L-Series

K-PIN01



Snapper Pin

K-UJ02



Splined U-Joint

K-UJ03



Squared U-Joint

K-CRANK15



Male Knuckle for Flex Crank

K-CRANK16



Female Knuckle for Flex Crank

K-CRANK17



Slide Lock Tube for Flex Crank

K-SPLINE



Spline Insert

K-SPLINE02



Spline Shaft, 2" dia. connector

K-SQCOG



Square Cog

K-CRANK14



Square Key w/ point

Terms & Conditions

Tarping USA is committed to providing the absolute best products and services at affordable pricing. We want your order to be right the first time and we understand that sometimes products may be lost, damaged in transit, or bear some sort of defect from the factory. To better serve our customers and ensure that our customers receive the quality products and service they have come to expect from Tarping USA, we have put the following policies in place.

SALES: All sales are final. An order confirmation will be sent via email or fax for the buyer's confirmation once the order is received at Tarping USA. It is the buyer's responsibility to read the said confirmation and verify that the order is correct. No response to the email or faxed order confirmation will be viewed as confirmation that the said order is correct. All orders made via purchase order will be considered by Tarping USA as confirmation of the order by the buyer.

SHIPPING: All orders are shipped F.O.B. from Slocomb, Al. There will be no full freight allowed or prepaid shipment accepted unless quoted and approved in writing prior to acceptance of the order. All shipments are made by most reasonable means in accordance with size and weight of order unless specific routing instructions are furnished by the customer and approved in writing prior to acceptance of order.

Shipments are made daily via Ground and LTL Freight. Tarping USA is not responsible for shipping delays once the shipment has left our facility and is in the carrier's possession. To ensure delivery of orders, we need your company name, person of attention, street address, city, state, and phone number. No exceptions.

Any shipment, delivery, or performance date or associated fees stated in an Order, Tarping USA Invoice or other contract document are an estimate and approximation only and does not constitute any guarantee of shipment, delivery, performance, or fees on any particular date. Tarping USA will not be liable for any damages resulting from any delay or early shipment, regardless of the cause of the delay or early shipment. Unless otherwise expressly stated, Tarping USA, shall have the right to make any delivery in installments, and/or may require Buyer accept shipments in full cartons/loads for some Products. Tarping USA reserves the right to modify an order based on Product availability. Further, any quotation of freight, transportation, shipping, handling, or similar charges are estimates only; if such charges are included in the Price, any increase in rates becoming effective after the Order date shall be applied to the Order.

SHORTAGES / DAMAGES: Claims for shortages and damages must be made within 5 days with Tarping USA. When you receive your shipment, examine it carefully. Be sure that all cartons listed on the delivery sheet are accounted for. Large items, such as steel or aluminum tubing, may be packaged separately. If a carton is damaged, open it and inspect the contents before signing for delivery. If merchandise is damaged, describe the damage on the delivery receipt. Failure on the receiver's part to document damaged or missing merchandise on the delivery receipt releases the carrier and shipper of liability; repair or replacement will be the customer's responsibility.

Tarping USA Replacement Parts

41

RETURNS: All returns must be done within 14 days of delivery. The customer must obtain an RMA number before returning the product. **Items received without an RMA number clearly marked on the shipment will be refused.** You can obtain an RMA number from your Tarping USA, representative. Modifications to any product will void any warranty.

CUSTOM TARPS: All custom ordered tarps should be drawn exactly as desired, and the drawing should accompany a written purchase order. Some custom tarp orders will require extra time and materials that may warrant additional charges. Custom ordered products are not returnable or refundable.

RESTOCKING FEE: A 15% restocking fee will apply to all **stock** tarps. A 50% restocking fee will apply to all cable systems. A 20% restocking fee will apply to all front to back systems and may incur a \$50.00 handling fee for painting/refurbishing if needed.

REFUNDS: Refunds for returns to Tarping USA, will be minus any restocking fees or shipping charges incurred by Tarping USA at any time during the transaction and/or refurbishing fees. All refunds will be applied to the payment method provided at the time of the purchase. If items are returned due to error by Tarping USA, the customer will receive a full refund.

TARP MOTOR WARRANTY: Tarp motors are under warranty from the moment they leave our shipping warehouse until the pre-determined length of the warranty has come due (3 or 5 years). We have a system in place that tracks motor serial numbers from the time they are invoiced up until the expiration of the warranty. The standard procedure for activating a motor warranty is as follows:

- Ensure that the motor has not been physically damaged in any way. External damage to the motor caused by loaders, falling debris, tree limbs, etc. automatically voids the warranty.
- Ensure that the motor has not been separated from the gear box. Our tarp motors are married to the gear box. This helps us guarantee safe operation and any attempt to open the motor or gear box automatically voids the warranty.
- Ensure that the circuit breaker is properly installed. Using the tarp motor with an improperly or not installed circuit breaker voids the warranty of the tarp motor. The circuit breaker controls the flow of electricity to the motor reducing damages by power surges.
- Call your sales representative at Tarping USA at **888-577-5218**. At this time the sales representative will ask you a few questions about the tarp motor to include the three items listed above and the sales representative will confirm that the tarp motor's serial number is in fact under warranty and for the customer to provide a proof of purchase.
- Box up and ship back the defective unit and **Proof of Purchase** to:
Tarping USA, Inc.
207 Smith Road
Slocomb, Al 36375

- After Tarping USA receives and inspects the tarp motor, a replacement motor will be sent out to you at no cost.

MANUFACTURERS GAURANTEE: Tarping USA acknowledges that sometimes the manufacturing process yields defects and sometimes shipping causes damage. If we do not catch a defective unit prior to shipping, or if an item is delivered in sub-par condition, then we are committed to making sure that your experience with is one that you will brag about to other people.

Apart from the items listed below, Tarping USA warranties all its products to be free from defects in material and workmanship for a period of thirty (30) days from the date of invoice

Product	Warranty Period
Tarps	30 days from date of invoice
Tarp Motors: APACHE & TOMAHAWK™	36 months from date of invoice
Tarp Motors: ENFORCER & DRONE	60 months from date of invoice
SlingShot Spring	36 months from date of invoice
Steel and Aluminum Side Arms	365 days from date of invoice



For a more comprehensive spread of replacement parts or for additional information and images on replacement parts seen in this catalog visit:

WWW.TARPINGUSA.COM

WWW.KYMINDUSTRIES.COM

Not sure if a part will work with what you've already got? Can't find the item you need? We also offer Heavy Duty Rubber Tarp Straps and Heavy Duty Ratchet Strap Assemblies. Give us a call today and ask one of our experienced sales professionals by calling (888)577-5218. We can help you find the right product for your tarping needs.



Order Form (Please Complete All Required * Information)

Ship To
 Name*: _____
 Address*: _____
 City, St, Zip: _____
 Telephone #*: _____
 Fax #: _____
 Your PO #: _____
 Your Requisition #: _____
 Order By*: _____
 Email: _____
 Date: _____

Bill To (Same as Shipping)
 Name*: _____
 Address*: _____
 City, St, Zip: _____
 Telephone #*: _____
 Fax #: _____
 Type of Card: (mark with 'X')
 Visa MasterCard
 Discover AmEx
 Credit Card #: _____
 Exp Date: _____ CNV: _____

Part Number	Quantity	Description	Price Each	Extended Total
If you would like to place an order then call our experienced sales professionals. If we're out of the office copy this, fill it out, and			Total	

Email this form to:
sales@kymindustries.com