

Exhaust Fan User Manual

Contact

Online Store



FB Link

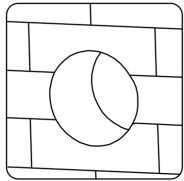


More products info & pic, installation videos please scan above.

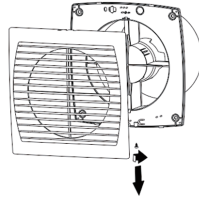


Two-Way Instalations

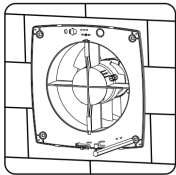
● WALL MOUNTED



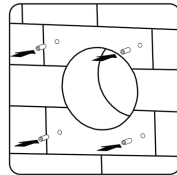
1. Drill a hole in the wall or window as the same of duct.



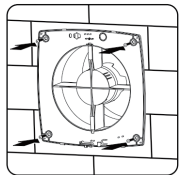
2. Loosen the panel screws & open it.



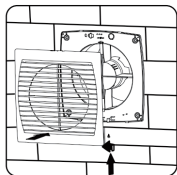
3. Put the base into the mounting hole and make screw signs on the wall.



4. Drill a hole at each mark place and put plastic rubber plug into the hole.



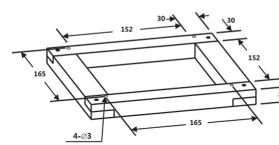
5. Put the base into the hole and install the screws.



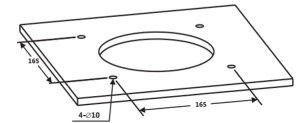
6. Close the panel and connect the power.

● CEILING MOUNTED

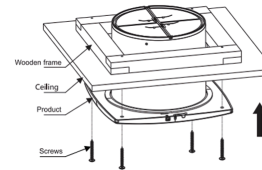
Wooden frame



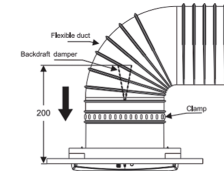
1. Make a wooden frame of above size.



2. Make a hole on the ceiling as the same size of fan duct.



3. Lock the fan into the wooden frame with matching screws and install the whole onto the ceiling keel.

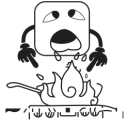
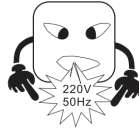


4. Cover the frame and then fix it with matching screws; Connected with a flexible air duct & clamp.

Note: The real installation may vary with your home structures.

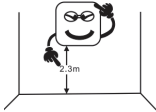
Caution

1. Choose the right voltage & connect the related power supply.



2. Avoid closing to high temperature.

3. Avoid water spraying or raindrop.



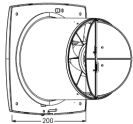
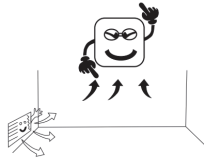
4. Mounting a wall or ceiling over 2.3m.

5. An outside vent cap should be mounted together.



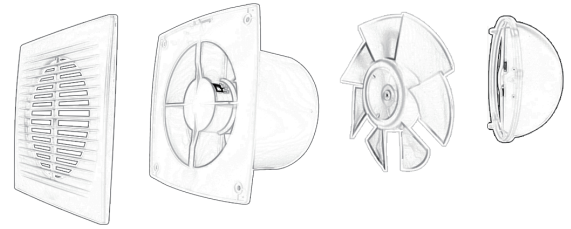
6. Avoid to install a place has a curtain.

7. It needs a air vent.



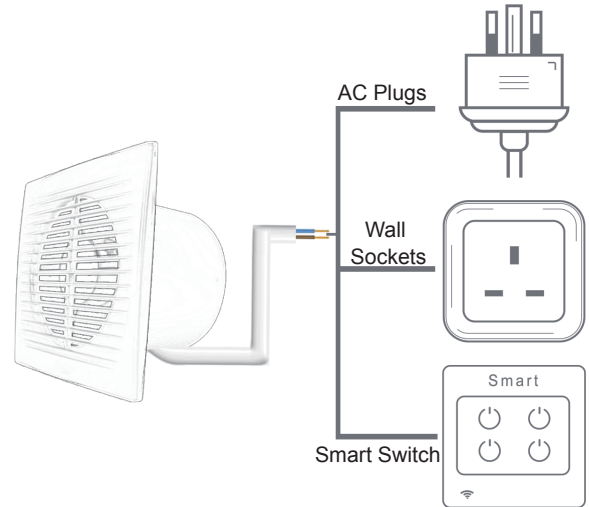
8. Keep a safety distance while installation.
(Back draft damper inside)

Repair & Connection



Note: The front cover can be removed by manual while installation & cleaning.

Multiple-Connections



Q&A

1. Q: Why the duct of fan is longer than my old one?
A: Our exhaust fans has a check valve which takes long distance inside the duct.

2. Q: Does the bulb of type-B can be replaced?
A: Yes. Please replace the a 5W bulb with GU10 connector.

3. Q: Can I install the fan with a rope switch?
A: Yes. You can.

4. Q: How many fans do I need in my room?
A: Below formula will help you:

$$\text{Fan Qty.} = \frac{\text{Room Square} * \text{Air Exchange Hour}}{\text{Air Flow Vol. of Selected Product}}$$

5. Q: Does this fan can be mounted in the bathroom?
A: Yes. Avoide the water drops though it has IP34 rating.

6. Q: Can the fans can be mounted on a window?
A: Yes. We equipped with a rubber seal ring to help you install easily on the window.

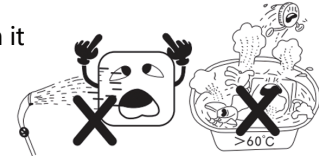
Maintaince & Warranty

Maintaince



- Powers the device off before dismantling & cleaning.
- Remove motor & other electrical components under a professional advice. And make them to avoide water.

- Avoid strong chemical cleaners to clean it
- Do NOT dip plastic parts into the hot water higher than 60°C.



Warranty

Thanks for purchaing our exhausting fans. We promised the highly quality of our products that it has 12-month warranty. Any questions please freely contact us. We also has below products.

