

Installation instructions for Sherco/Scorpa spark arrestor adapter model #ST-4

- 1) Remove the 3 rear fender screws identified by red circles in Figure 1 & remove the rear fender to gain better access to the end cap screws.



Figure 1-Rear fender screw locations.

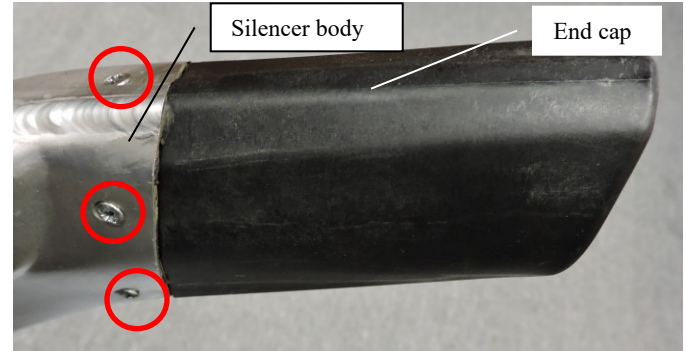


Figure 2-End cap screw locations.

- 2) Remove the three screws holding the end cap to the silencer body. Screw locations are identified by red circles in Figure 2
- 3) Remove the end cap by working the end cap up and down while pulling to the rear of the bike. If the bike is new and the end cap has not been exposed to many heat cycles; using a heat gun to warm up the end cap where it meets the silencer body will aid in removal. The goal here is only to separate the end cap from the silencer body to install the adapter, it is possible to pull out the perforated exhaust tube with the end cap and effectively unpack the silencer. As the end cap separates from the silencer body watch the end of the exhaust tube and verify that it is receding into the rubber grommet at approximately the same rate as the end cap separates from the silencer body, this will insure you are not removing the exhaust tube.
- 4) After the end cap is free from the exhaust tube pull out the rubber grommet from the inside of the end cap and clean the end cap, especially the bore where the grommet was (test for solvent compatibility with the PLASTIC end cap). The adapter will replace the rubber grommet in the end cap assembly. Figure 3 shows top view of end cap with grommet installed Left & removed Right.

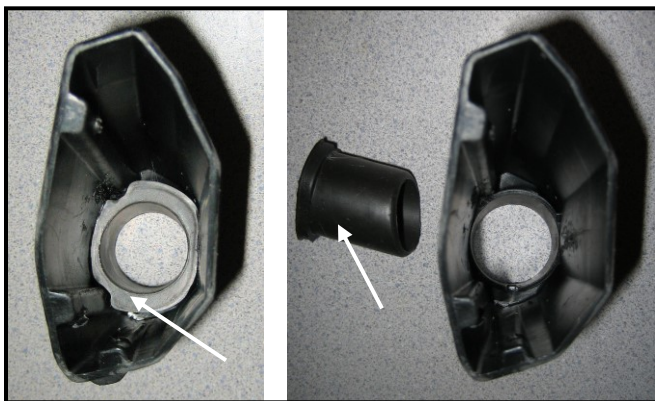


Figure 3- White arrow identifies rubber grommet installed (Left) & removed from end cap (Right).



Figure 4-Black arrow identifies cleaned & greased portion of exhaust tube.

- 5) Clean the end of the exhaust tube using emery paper or a wire wheel and apply some grease to aid installation of the adapter (Ref. Figure 4).
- 6) Next slide the adapter over the exhaust tube to check fit (Ref. Figure 5). The adapter should easily slide on & contact the stop plate. If the fit is not satisfactory remove excess weld material, rust, or other foreign material with a file until proper fit is achieved. Application of a little grease to the outside of the adapter & O-rings will make it easier to re-install the end cap. As shown in Figure 6, the stop plate should be roughly 40mm away from the top end of the silencer when it is fully inserted into silencer body. If this measurement is 50mm+ the perforated tube may not be fully inserted into the silencer body, this must be corrected or the end cap will not slide on completely.

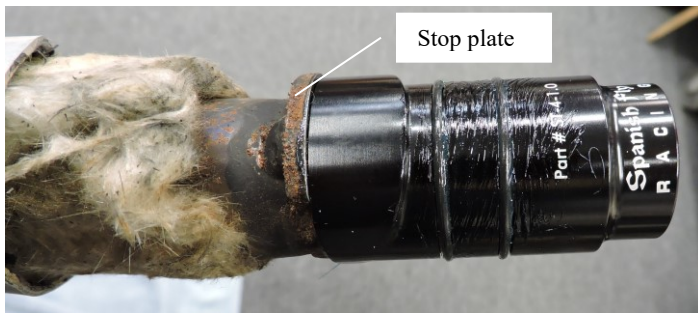


Figure 5-Adapter correctly positioned on exhaust tube.



Figure 6- Measurement of stop plate to end of silencer.

- 7) Apply silicone sealant to the surface of the end cap that will interface with the silencer body, this will act as an assembly lubricant & help seal the gap between the two parts. Slide end cap over the adapter & begin assembly by introducing the lower edge of the end cap (Ref. white arrow in Figure 7) into the silencer body. Tap lightly with a rubber mallet at the top end of the end cap to persuade the top edge of the end cap into the silencer body. If the bike is new and the end cap has not been exposed to many exhaust heat cycles; using a heat gun to warm up the inside of the end cap where it meets the adapter will aid in assembly.

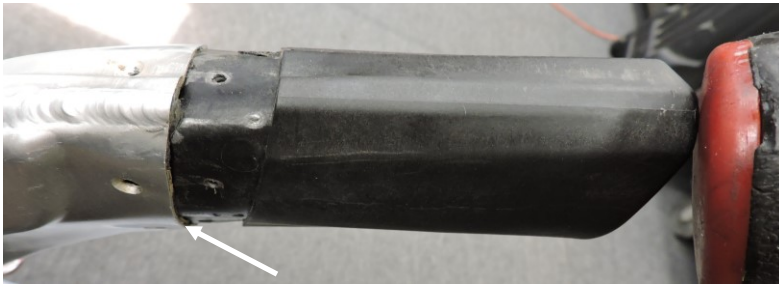


Figure 6-Re-installation of end cap beginning with lower edge identified by white arrow.

- 8) Re-install the three endcap screws, final installation should look like Figure 7 below. Now smile & go ride a section!

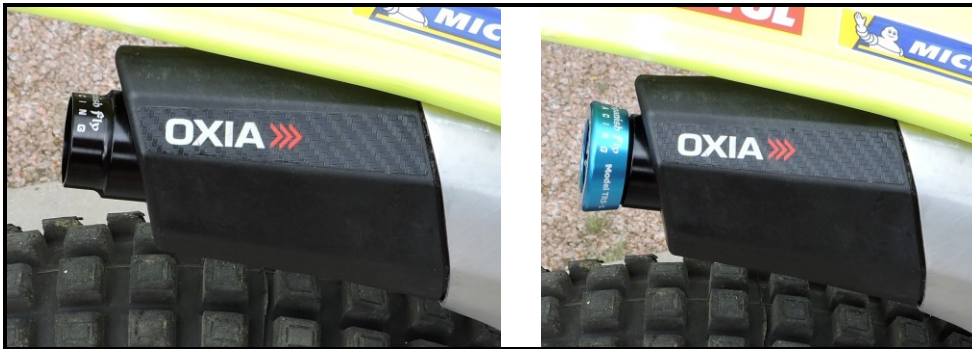


Figure 7-Adapter installed (Left), adapter installed with TRS-1 spark arrester (Right).

Applications: Sherco ST & ST Racing 80-305cc Years 2014-2022, Scorpa 125-300cc models Years 2014-2022.

Technical Data: Part # ST-4, Body-anodized 6061-T6 aluminum, Sealing/Fitting- (2X) size 025 viton O rings, Weight-39 grams/1.4 oz