

Installation instructions for Sherco/Scorpa spark arrestor model #ST-3

- 1) Remove the CLEAN silencer from the CLEAN bike.
- 2) Locate and remove the three screws holding the composite end cap to the silencer body (reference Figure 1).

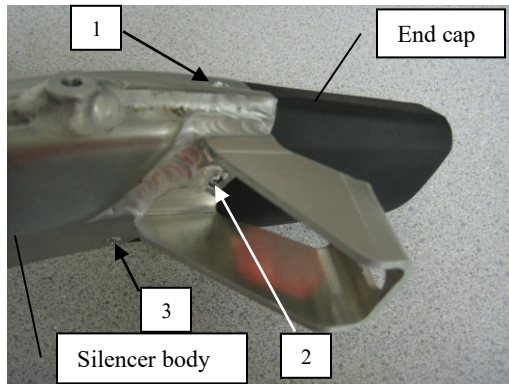


Figure 1 –Silencer with arrows identifying the three screws that hold the end cap to the silencer body.



Figure 2 – View of end cap just separated from silencer body.

- 3) Gently separate the end cap from the silencer body as shown in Figure 2 by rocking, twisting and pulling. Note the goal here is only to separate the end cap from the silencer body to install the spark arrestor. If you continue to pull straight out on the end cap you will pull out the perforated exhaust tube and effectively unpack the silencer. If you already planned on repacking the silencer go ahead and completely remove the packing and exhaust tube.
- 4) Once separated grasp/pinch the center of the silencer packing and exhaust tube (as shown in Figure 3) with one hand, and with the other gently twist the end cap back and forth while pulling away from the silencer body, the goal is to not pull the exhaust tube out of the silencer body and to remove the end cap. Continue to pull/twist on the end cap until it is free from the exhaust tube.

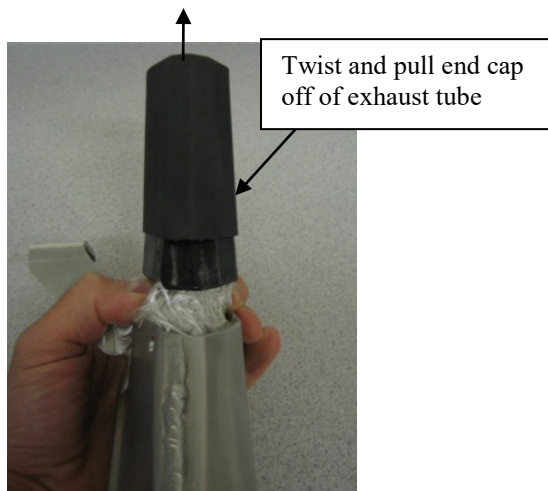


Figure 3 – Pinch location to hold exhaust tube while pulling off end cap.

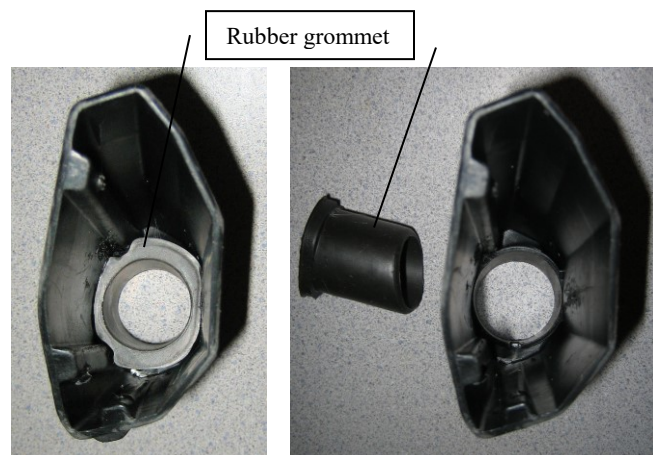


Figure 4 – Inside view of end cap identifying rubber grommet installed location (Left) and appearance after removal (Right).

- 5) After the end cap is free from the exhaust tube pull out the rubber grommet from the inside of the end cap and thoroughly clean the end cap, especially the bore where the grommet was (test for solvent compatibility with the composite (PLASTIC) end cap). The spark arrestor will replace the rubber grommet in the end cap assembly. Figure 4 shows what the end cap looks like with and without the grommet.
- 6) Check the fit of the spark arrestor over the exhaust tube. If it does not slide on easily you may need to remove paint, welding splatter or flux from the exhaust tube with emery paper, a file or grinder.
- 7) Prior to inserting the spark arrestor into the end cap, lightly grease in and around the O-rings to ease insertion. Figure 5 illustrates the greased spark arrestor ready for insertion (Left). Note the end of the spark arrestor with no flange is inserted into the end cap first, as shown in the (Right) illustration of Figure 5. Also note the orientation of insertion, insert so that the thin edge of the flange

would be facing the ground when on the bike. Continue to push the spark arrester into the end cap until the flange is seated, pushing only on the aluminum body, not the screen. The fit should be snug to tight. If you need a hammer it is too tight, remove the spark arrester and sand or file any flashing or excess material in the end cap bore and try it again.

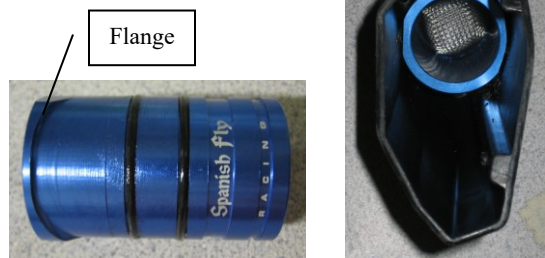


Figure 5 – View of greased spark arrester ready for insertion (Left) and partially inserted in end cap.

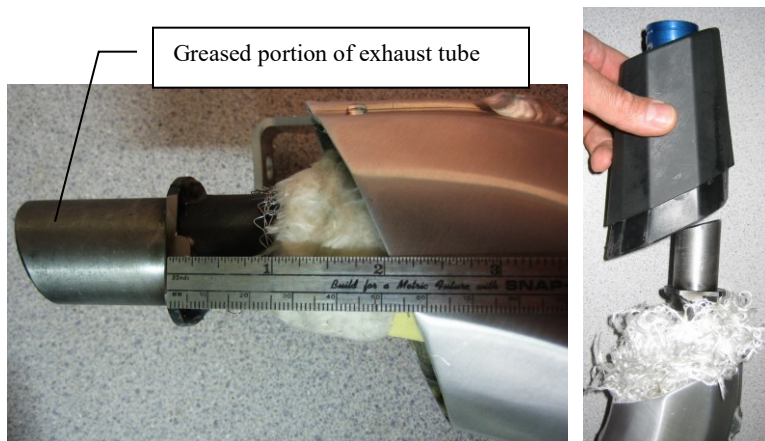


Figure 6 – Measurement to verify properly inserted/fitted exhaust tube (Left).

- 8) Before re-installing the end cap, verify that the exhaust tube is fully inserted/fitted into the silencer body and was not displaced during the disassembly process. When properly inserted/fitted there should be approx. 2" from the exhaust tube flange to the edge of the silencer body as shown in Figure 6 (Left). The end of the exhaust tube inside the silencer body fits over a flange, if there is significantly more than the 2" then the exhaust tube is not properly fitted over this flange. If this is the case, manipulate the exhaust tube until the exhaust tube fits over the flange and can be fully inserted/ fitted into the silencer body to obtain the 2".
- 9) Next clean and lightly grease the portion of the exhaust tube that will fit in the spark arrester as shown in the Left portion of Figure 6 and slide the end cap onto the silencer body by directing the exhaust tube into the I.D. of the spark arrester as shown in the Right portion of Figure 6. As the end cap gets close to the silencer body, introduce the lower corner of the end cap into the silencer body first as shown in Figure 7 (white arrow). Be patient, it may take several attempts to get the orientation correct and the end cap started into the silencer body. Once started, a gentle tap with a rubber mallet at the location shown in Figure 7 can help align and seat the end cap in the silencer body.



Figure 7 – Bottom view of end cap first entering silencer body (white arrow), and tapping location (black arrow).



Figure 8 – Left side view of silencer body showing installed spark arrester.

- 10) Once end cap is seated, reinstall the three screws. Final installation should look like Figure 8. Reinstall the silencer and go ride.

SERVICE: To maintain maximum flow characteristics the screen must occasionally be cleaned. Start with 6 hour service intervals & adjust per individual requirements depending on oil brand & mixing ratio. **WARNING: DO NOT USE A TORCH TO BURN THE SCREEN CLEAN, THIS WILL PERMANENTLY DAMAGE THE SCREEN AND DOES NOT REMOVE ALL CARBON DEPOSITS.** To clean the screen: (1) remove the spark arrester from the end cap as described in the installation instructions. (2) Remove the screen from the spark arrester body by pinching the end of the screen to compress it, and then pulling it out in the opposite direction of exhaust flow. (3) Clean the screen with an appropriate solvent (WD40 & a tooth brush work great). (4) Re-install the screen back into the spark arrester body by again pinching/compressing the screen & sliding it in making sure it is seated in the relief cut in the end of the body. (5) Re-install spark arrester per installation instructions, smile & ride.

PATENT PENDING & USFS APPROVED (REF. FILE#0880-01)

MATERIALS: Body-anodized 6061-T6 aluminum, Sealing- size 25 viton O rings (2X), Screen-stainless steel

WEIGHT: 42 grams (1.48 oz)

APPLICATIONS: Sherco ST & ST Racing 80-305cc Years 2014-2023, Scorpa 125-300cc models Years 2014-2023.