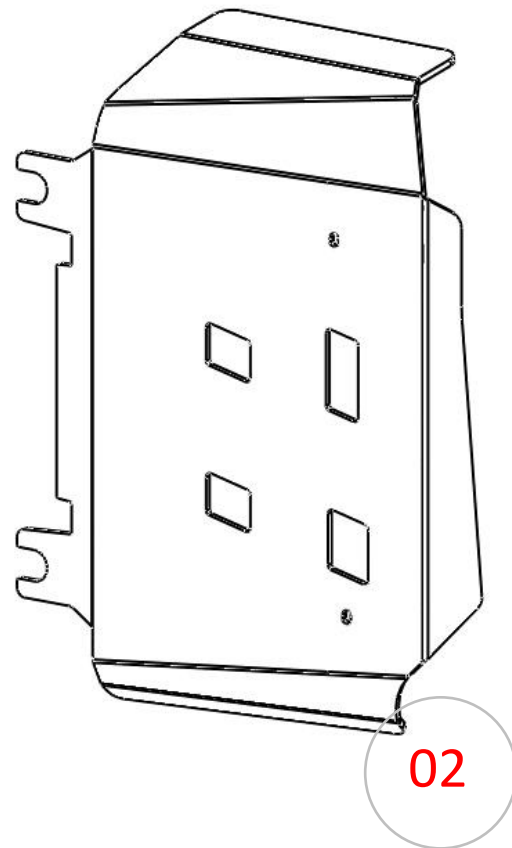
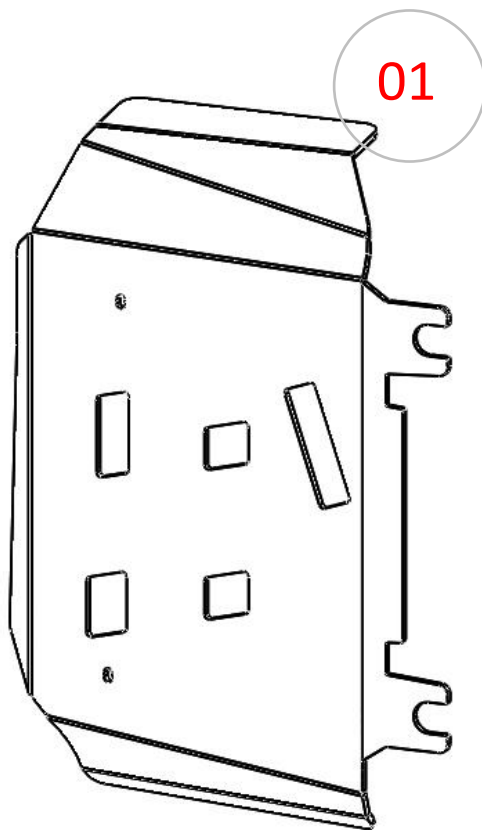




INSTALLATION INSTRUCTIONS

SKU: **SP-6120**

FOOTWELL PLATES CAN-AM OUTLANDER G2 & G2L (2012+)



SAFETY WARNING

Please **read and understand** all instructions and safety warning prior to install the product. Failure to do so could result in product damage, personal injury or even death.

- Stay alert! Watch what you are doing and use common sense while handling this product.
- Inspect product for damage prior to installation, do not use if product is in unsafe condition.
- Do not install product while under the influence of drugs, alcohol or medication.
- Always use safety equipment to prevent injuries. Approved face and eye protection must always be worn by the installer, as well as others in the work area.
- Do not over reach. Keep proper footing and balance at all times.
- Dress properly. Do not wear loose clothing or jewelry. Keep your hair, clothing and gloves away from moving parts.
- Keep your work area clean and well lit.

Item	Part No.	Description	Qty.
COMPONENTS			
Those items are shown on the first page.			
01	6120-01	Left Aluminum Footwell Plate	1
02	6120-02	Right Aluminum Footwell Plate	1
HARDWARE			
Those items are included with each kit to install components.			
03	A-1005	M6 Flat Fender Washer	4
04	A-1205	M6 Cup Washer	4
05	A-1505	M6-1.00 Flange Lock Nut	8
06	A-2607	M6-1.00 x 25mm Hex Flange Bolt	4
07	A-2616F	M6-1.00 x 50mm Hex Bolt (full thread)	4
08	B-5206	12mm ID. x 11/16" OD. x 3/8" Lg. Bushing	4

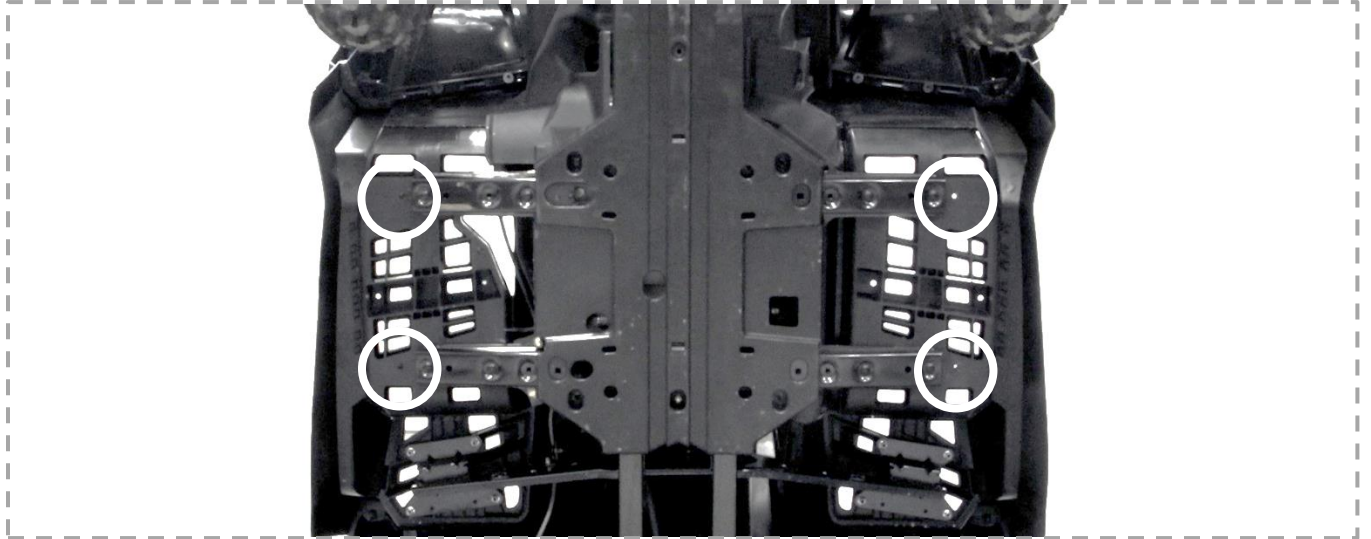
IMPORTANT:

If you have to install the PERFEX Central plates, install the footwell plate first, for an easy installation.

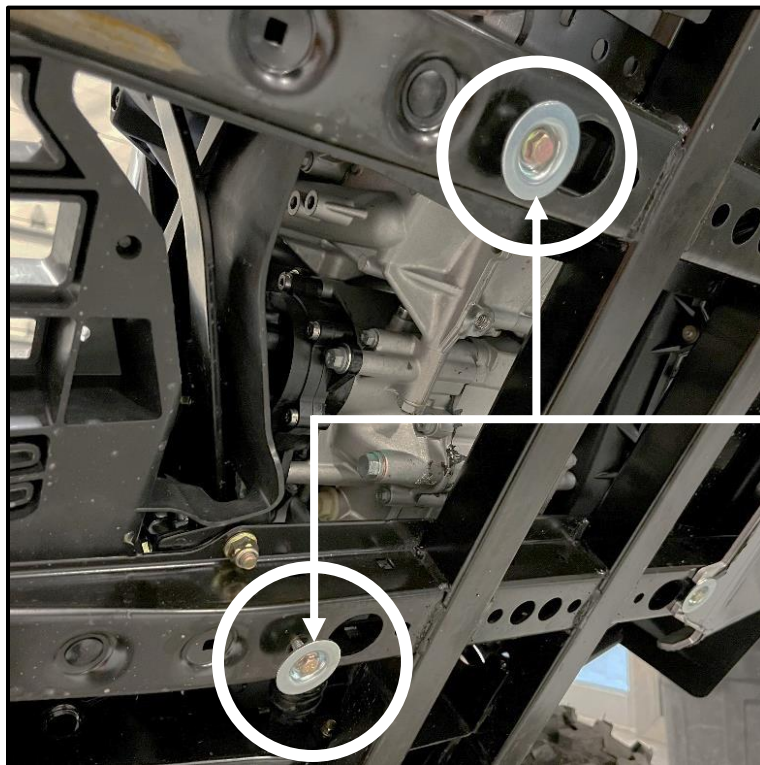
INSTALLATION INSTRUCTIONS

1. We recommend to standing the ATV up on its end, to be able to install easily the plate under the bike.
2. On each side, remove both "outside bolts" that fix the plastic floorboard to the frame.

See image below.

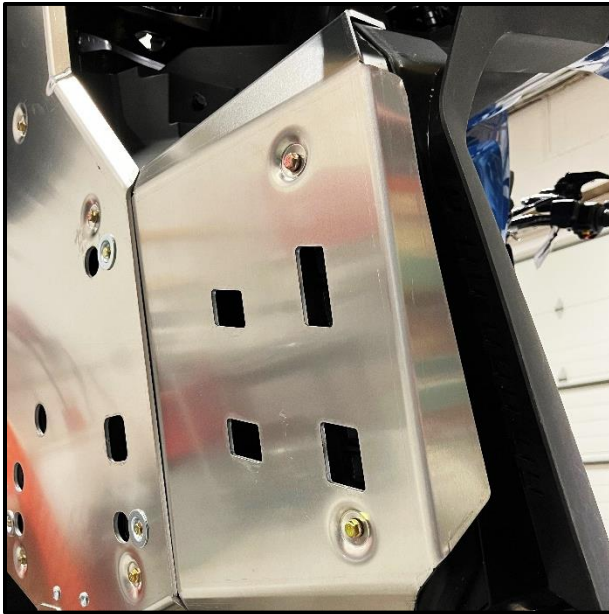


3. Install to the frame, as shown below, the M6 cup washers with M6x25mm bolts and M6 lock nuts.
 - **Note 01:** Insert the lock nuts through the square frame.
 - **Note 02:** Do not tight.

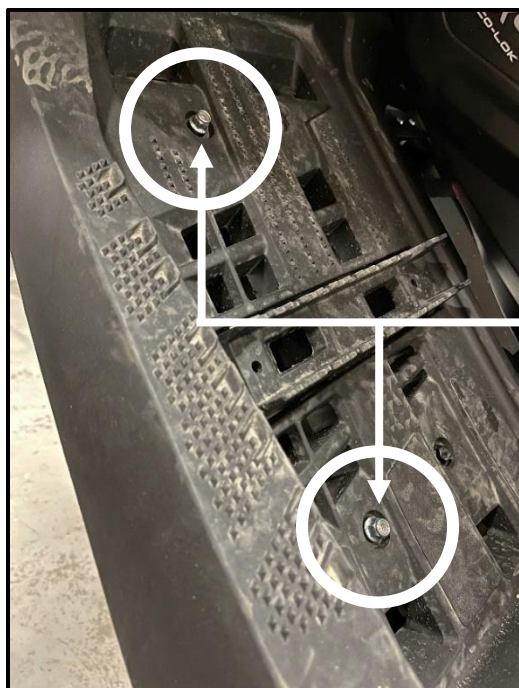


M6 CUP WASHERS

4. Install and secure the new footrest plates under the floorboard, using the factory mounting points. On each side, use **(2x)** M6x50mm bolts, **(2x)** M6 flat washers and **(2x)** 3/8" Lg. spacers.
 - **Note 01:** Insert the plate between the cup washer and the frame.
 - **Note 02:** Insert the spacers between the plate and the floorboard.
5. Once all is fixed, tight the bolts appropriately.
 - **Note 01:** PERFEX Footrest plates can be installed with the OEM plastic skid plate from Can-Am.
 - **Note 02:** If you also have the PERFEX Central plates, the Cup Washers will need to be over the Central plate, not the Footrest plate (**see image below**).



6. On each side secure the floorboard using **(2x)** M6 lock nuts, as shown below.



M6-1.00 LOCK NUTS