

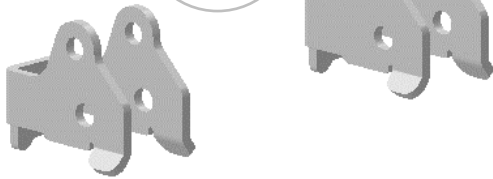


INSTALLATION INSTRUCTIONS

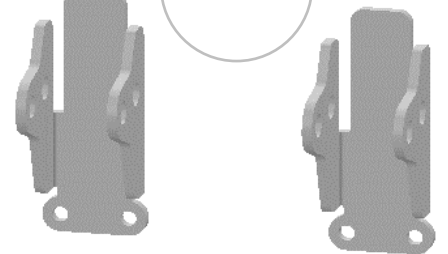
SKU: **LK-10306**

1.5" LIFT KIT CFMOTO CFORCE G2 400/500 (2022+)

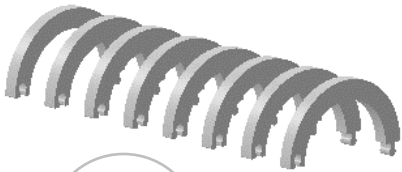
01



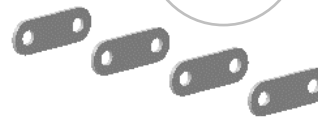
03



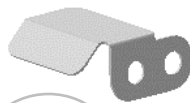
02



04



05



Item	Part No.	Description	Torque	Qty.
------	----------	-------------	--------	------

LIFT COMPONENTS

Those items are shown on the first page.

01	306-01	Front Lift Bracket		2
02	306-02	Spring Spacer		8
03	306-03	Rear Lift Bracket		2
04	306-04	Small Bracket		4
05	306-05	Heat Shield		1

FRONT HARDWARE

Those items are included with each kit to install the front lift components.

06	A-1008	M10 Flat Washer		4
07	A-1509	M10-1.50 Flange Lock Nut	36 to 38 ft-lbs	4
08	A-3021	M10-1.50 x 60mm Hex Flange Bolt	36 to 38 ft-lbs	4
09	B-5219	12mm ID. x 11/16" OD. x 1-3/16" Lg. Bushing		2

REAR HARDWARE

Those items are included with each kit to install the rear lift components.

07	A-1509	M10-1.50 Flange Lock Nut	36 to 38 ft-lbs	4
10	A-3023	M10-1.50 x 65mm Hex Flange Bolt	36 to 38 ft-lbs	4
11	B-5004	10mm ID. x 5/8" OD. x 1/4" Lg. Bushing		2
12	B-5220	12mm ID. x 11/16" OD. x 1-1/4" Lg. Bushing		2
13	42004	1/4"-20 x 1/2" Pipe Size U-Bolt	6.3 ft-lbs	2
14	37018	1/4"-20 Lock Nut	6.3 ft-lbs	4

PLEASE READ AND UNDERSTAND BEFORE THE INSTALLATION

CUSTOMER AND/OR END USER:

This product is designed for use on ATVs and/or UTVs to increase ground clearance and fender clearance. Purchasers should be aware that use of this product may increase the frequency of required maintenance, part wear...

Using a lift kit will raise the center of gravity on your ATV and/or UTV, increasing risk of roll-over, injury and death on ALL types of terrain. It's YOUR RESPONSIBILITY to always inform other operators and passengers of this vehicle about the added risks.

Our products are designed to best fit user's ATV/UTV under stock conditions. Adding, modifying, or fabricating any OEM or aftermarket parts will void warranty. PERFEX Industries products could interfere with other aftermarket accessories. If the user has aftermarket products on machine, please contact PERFEX Industries to verify that they will work together.

Adding aftermarket suspension components and/or more aggressive tires can cause breakage of other OEM driveline components such as differentials, axles or drive shafts.

We ALWAYS recommend that wider tires and/or wheel spacers be used to achieve a wider stance and to improve stability of the ATV and/or UTV. Riders should be advised that the handling characteristics of a taller ATV and/or UTV are different and require extra care when riding, particularly on side hills or off-camber situations. If you further raise the center of gravity by adding taller tires, heavy loads to racks or seats, or by any other means, the ATV and/or UTV must be operated with even more care, at slower speeds and on relatively flat ground. All turns should be done at a slow speed, even on level ground.

Operation of an ATV and/or UTV with or without modified suspension components, while or shortly after consuming alcohol or drugs, subjects the rider to the risk of serious bodily harm or possible death. This risk is compounded if the rider does not wear an approved helmet and other safety gear.

PERFEX Industries urges that all approved safety gear be worn when riding an ATV and/or UTV as a driver or passenger.

By purchasing and installing PERFEX Industries products, user agrees that should damages occur, PERFEX Industries will not be held responsible for loss of time, use, labor fees, replacement parts, or freight charges. WE (PERFEX Industries) will not be held responsible for any direct, indirect, incidental, special, or consequential damages that result from any product purchased from PERFEX Industries.

PLEASE TAKE NOTE: The total liability of seller to user for all damages, losses, and causes of action, will never exceed the total purchase price paid for the product that gives rise to the claim.

DEALER AND/OR OTHER INSTALLERS:

You are responsible for informing your customer and end user of the information contained above and the increased potential hazards of operating an ATV and/or UTV equipped with modified suspension components.

If you install any suspension modifying components, it is your responsibility to also install a warning label prominently in view of the driver and in prominent view of the driver and passenger on UTVs and multi-passenger ATVs.

They should also be instructed to notify anyone operating the vehicle, as well as any passengers, that said vehicle is modified.

As discussed above, it is critically important that they be instructed in the need for slower speed operation, regardless of terrain, after this lift kit is installed.

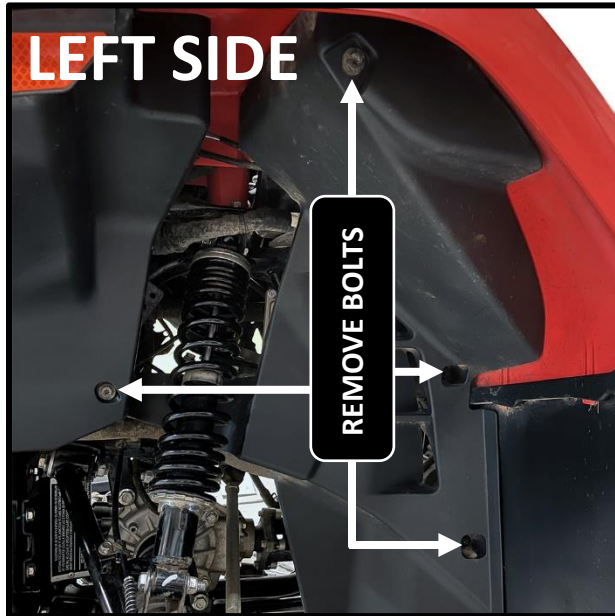
FRONT INSTALLATION INSTRUCTIONS

PREPARATION

- Using a jack under center of front end, lift until the front wheels leave the ground.
- Remove the wheels.
- To be able to disconnect top of the shocks, remove inner fender, both sides.

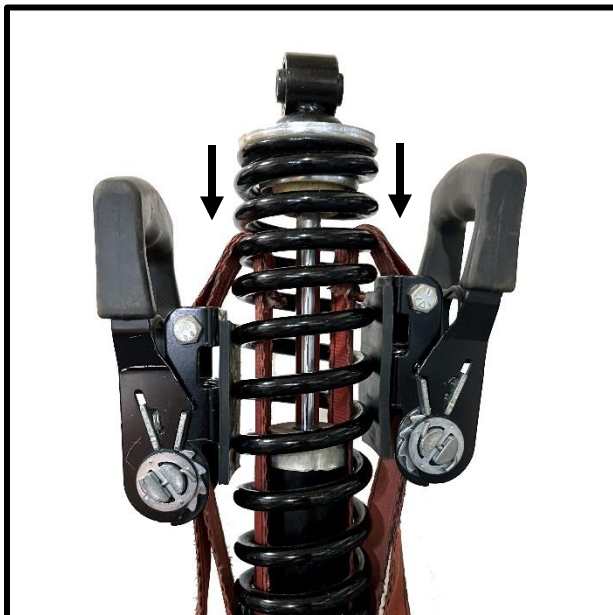
NOTE: Total of 4x bolts to remove on each side, as shown below.

- Remove the shocks. Use a 15mm wrench/socket.



INSTALLATION

1. Using a shock compressor or some ratchet tie down straps, compress the spring as show below.



2. Insert (2x) spring spacers (item 02) to the top of the spring.

NOTE: Connect both spacers together, as a puzzle. Once done, uncompress the spring.



3. Repeat the same steps with the other shock.

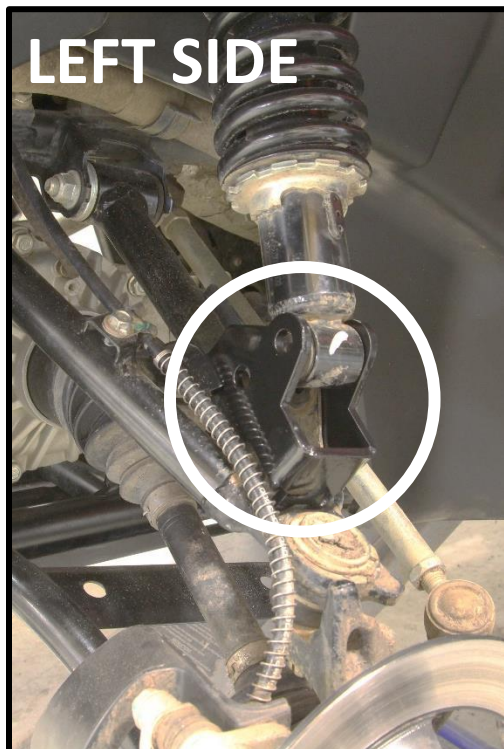
4. Reconnect the top of the shocks to the frame shock mount.

NOTE: Use OEM hardware and tight them using factory specification (about 38-40 ft-lbs).

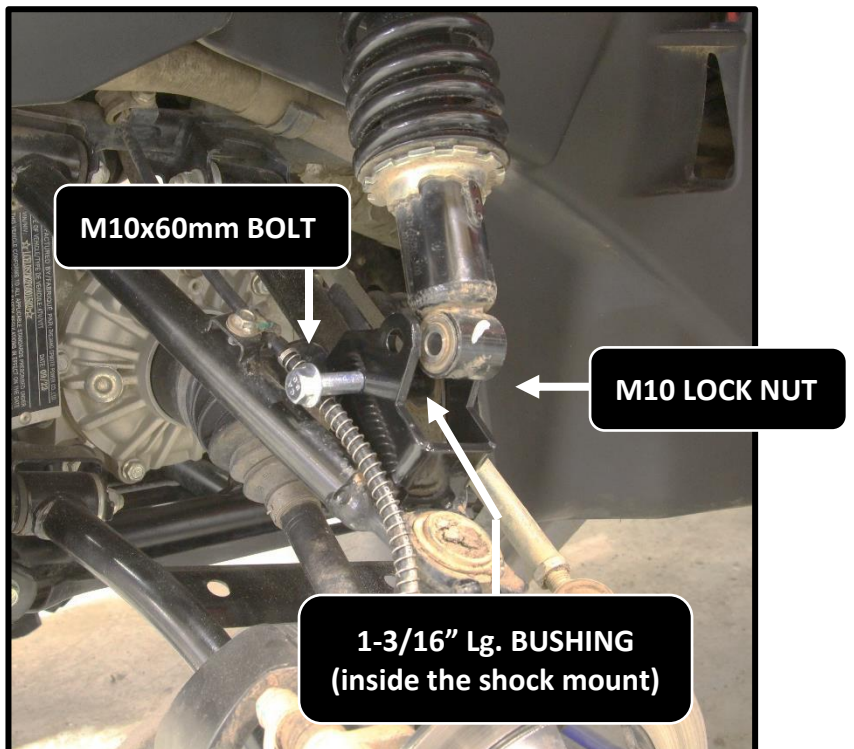
5. Put inner fenders back using OEM hardware.

6. Install the front lift bracket (item 01) to the left suspension shock mount.

USE: (1x) M10x60mm bolt, (1x) 1-3/16" bushing and (1x) M10 lock nut.



LEFT SIDE

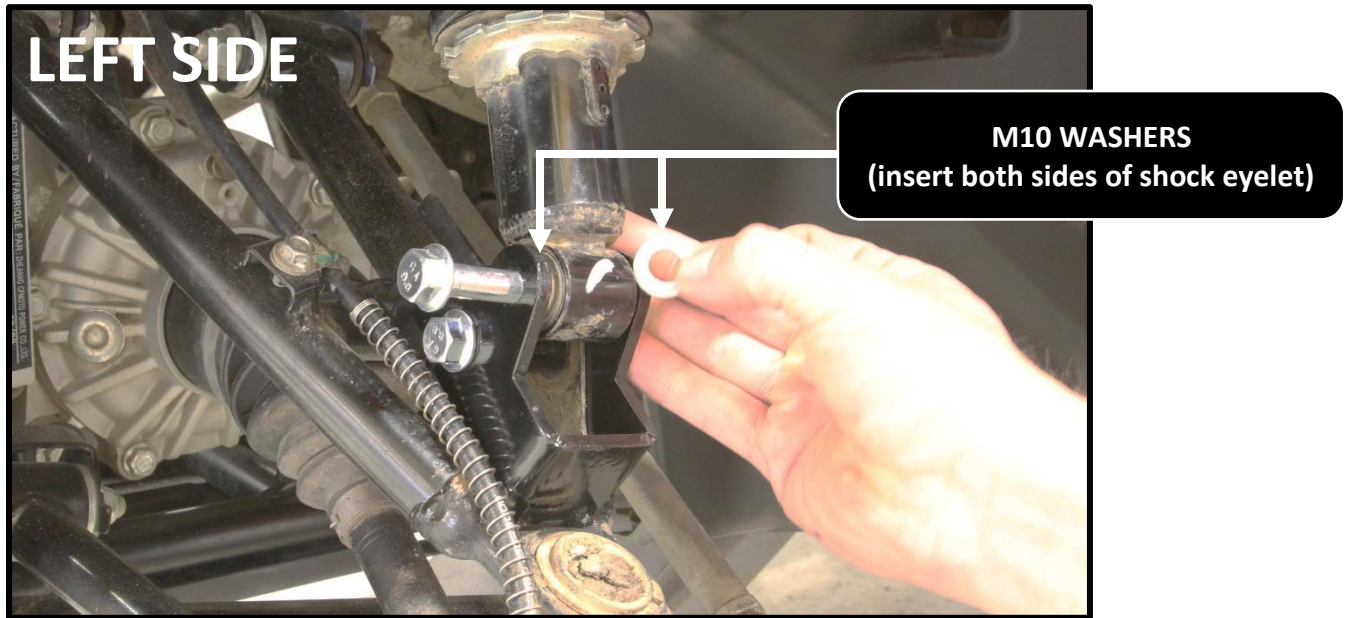


M10x60mm BOLT

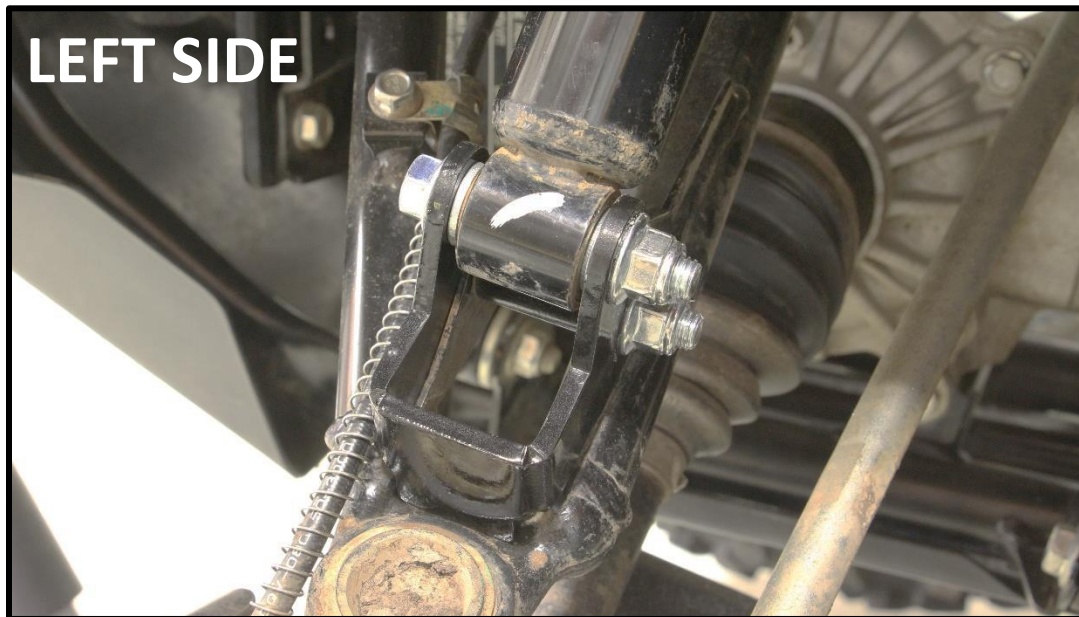
M10 LOCK NUT

1-3/16" Lg. BUSHING
(inside the shock mount)

7. Connect the bottom of the shock to the lift bracket.
USE: (1x) M10x60mm bolt, (2x) M10 washers and (1x) M10 lock nut.



8. Tight hardware appropriately at this point. Use a 14mm and a 15mm wrench/socket for the provided hardware.

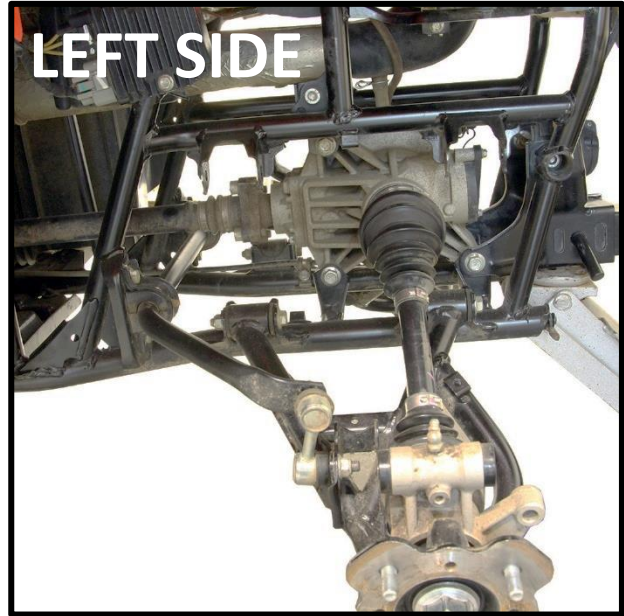
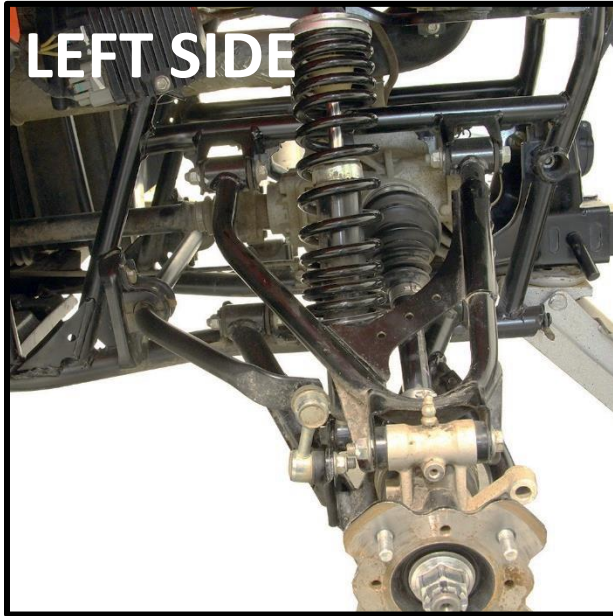


9. Repeat the same steps (**step 6-8**) for the right side.
10. Put the wheels back on the vehicle when the installation is done. **Torque all lugs to factory specification.**

REAR INSTALLATION INSTRUCTIONS

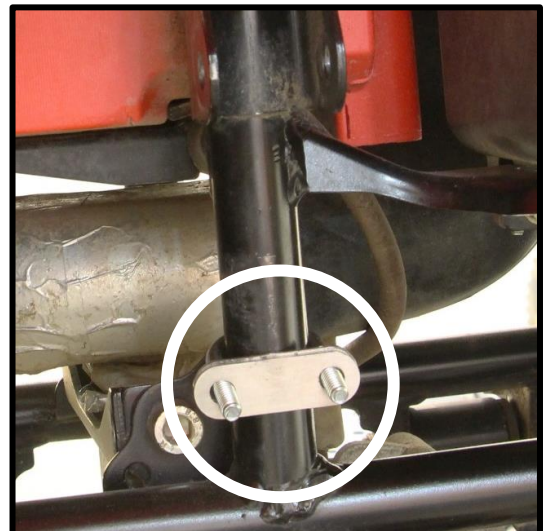
PREPARATION

- Using a jack under center of rear end, lift until the rear wheels leave the ground.
- Remove the wheels.
- Remove the upper arms. Use a 15mm wrench/socket.
- Remove the shocks. Use a 15mm wrench/socket.



INSTALLATION

1. Install the remaining spring spacers to the top of the rear shocks.
NOTE: Refer to the steps 1-3 of the front installation instructions.
2. As shown below, insert (1x) U-bolt to the frame, with (2x) of the provided small brackets (item 04).
NOTE: Start with the left side.

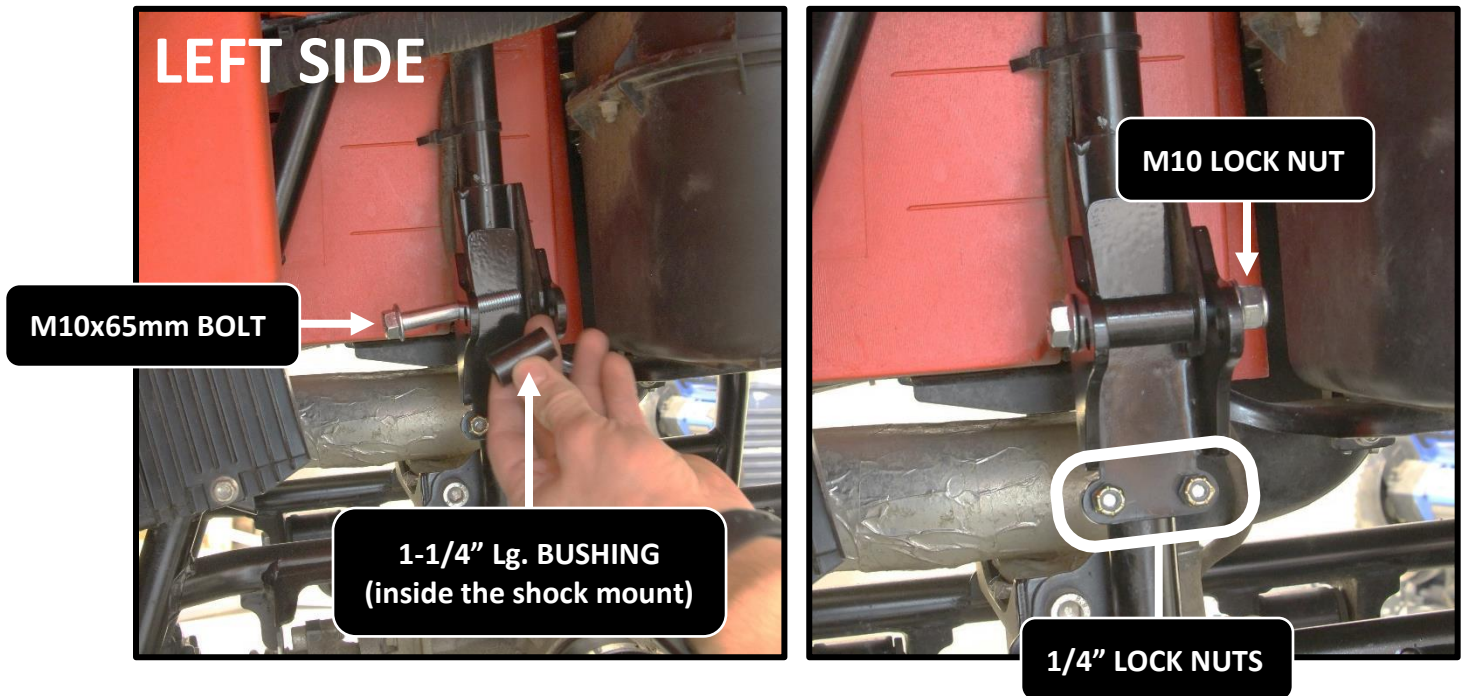


3. Secure the bottom of the rear lift bracket (**item 03**) to the U-bolt.

USE: (2x) 1/4" lock nuts.

4. Install the rear lift bracket to the frame shock mount.

USE: (1x) M10x65mm bolt, (1x) 1-1/4" bushing and (1x) M10 lock nut.

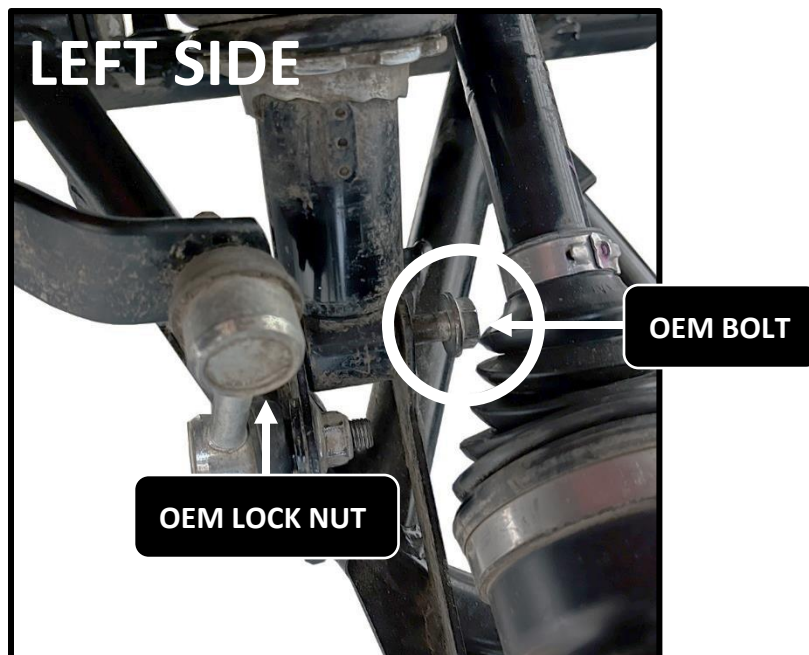


5. Tight the 1/4" lock nuts. Use a 7/16" socket.

6. Reconnect the bottom of the shock to the suspension arm, using factory hardware.

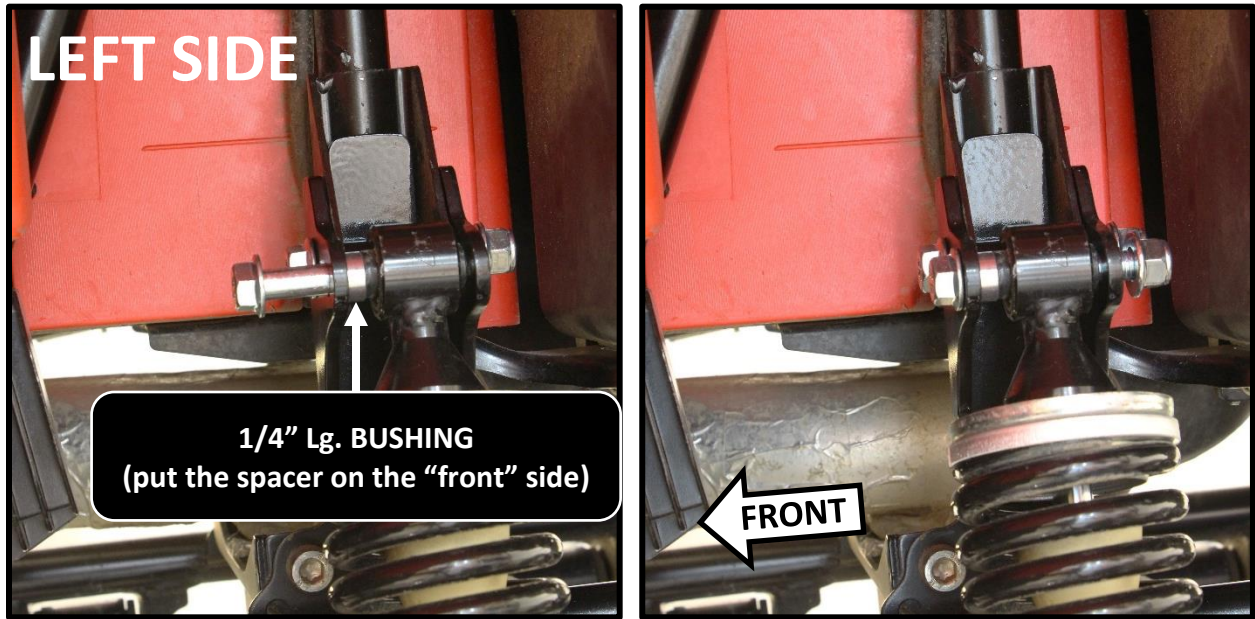
NOTE 01: Put the head of the bolt face off the rear of the ATV.

NOTE 02: Use OEM hardware and tight them using factory specification (**about 38-40 ft-lbs**).



7. Connect the top of the shock to the lift bracket.

USE: (1x) M10x65mm bolt, (1x) 1/4" bushing and (1x) M10 lock nut.



8. Repeat the same steps (step 2-7) for the right side.

NOTE: Put the heat shield (item 05) on the right side, to protect against the heat muffler. Refer to the image "RIGHT SIDE" at step 12.

9. Once done, mark the arm removed as shown below.

10. Using a grinder or a metal band saw, cut the arm.

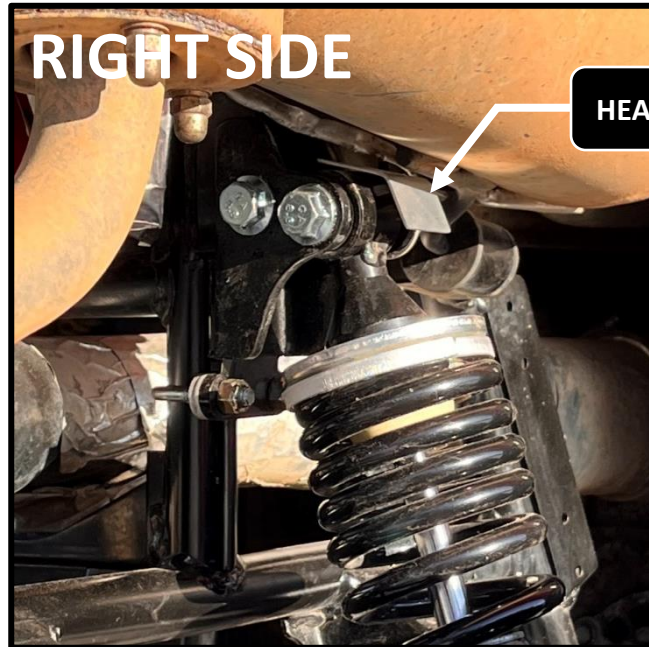
NOTE: To prevent rust, sand and give a paint coat to where the suspension arm was cut, at the end of the process.



11. Re-install both suspension upper arms using factory hardware.

NOTE: Tight them using factory specification (**about 38-40 ft-lbs**).

12. Tight hardware of lift brackets appropriately at this point. Use a 14mm and a 15mm wrench/socket.



13. Put the wheels back on the vehicle when the installation is done. **Torque all lugs to factory specification.**