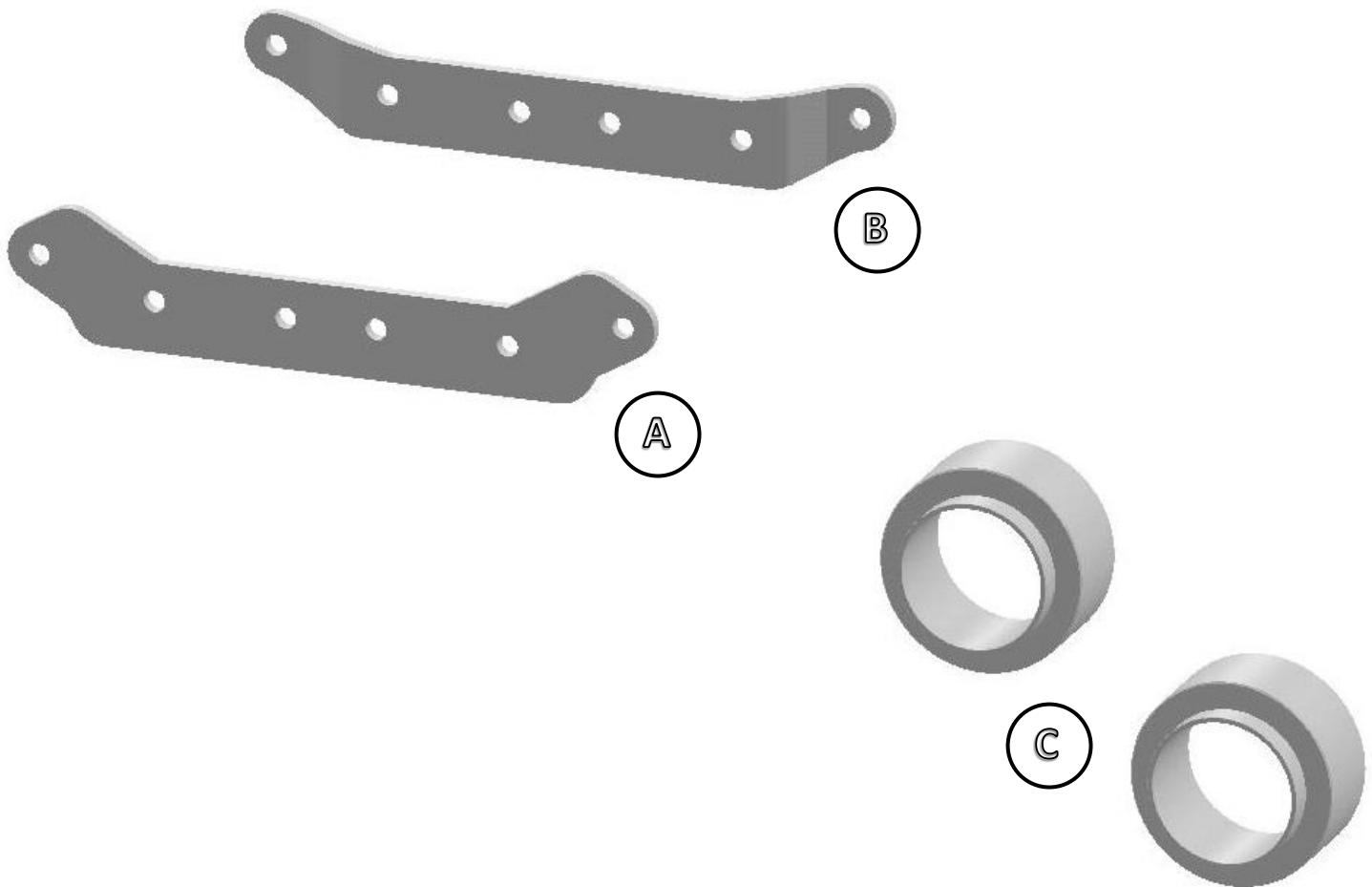


LK-10273 INSTALLATION INSTRUCTIONS

2" LIFT KIT YAMAHA YXZ 1000R (2016-18)

ITEM	BRACKET DESCRIPTION	QTY
A	Front outer bracket	1
B	Front inner bracket	1
C	Rear spring spacer	2

ITEM	HARDWARE DESCRIPTION	QTY
D	M10-1.50 x 60mm Lg. Hex Flange Bolt	4
E	M10-1.50 x 65mm Lg. Hex Flange Bolt	2
F	M10-1.50 Flange Nylon Lock nut	6
G	10mm ID. x 5/8" OD. x 1" Lg. Spacer	2
H	12mm ID. x 11/16" OD. x 1-1/8" Lg. Spacer	2



PLEASE READ AND UNDERSTAND INSTALLATION INSTRUCTIONS BEFORE BEGINNING

WARNING

The vehicle has been modified to enhance off-road performance. Handling characteristics have changed substantially and improper use may result in serious injury or death. Extreme care should be taken operating a lifted vehicle, over and above standard precautions taken with a stock vehicle. We recommend that wider tires and/or wheel spacers be used to achieve a wider stance and to improve stability of the ATV/UTV.

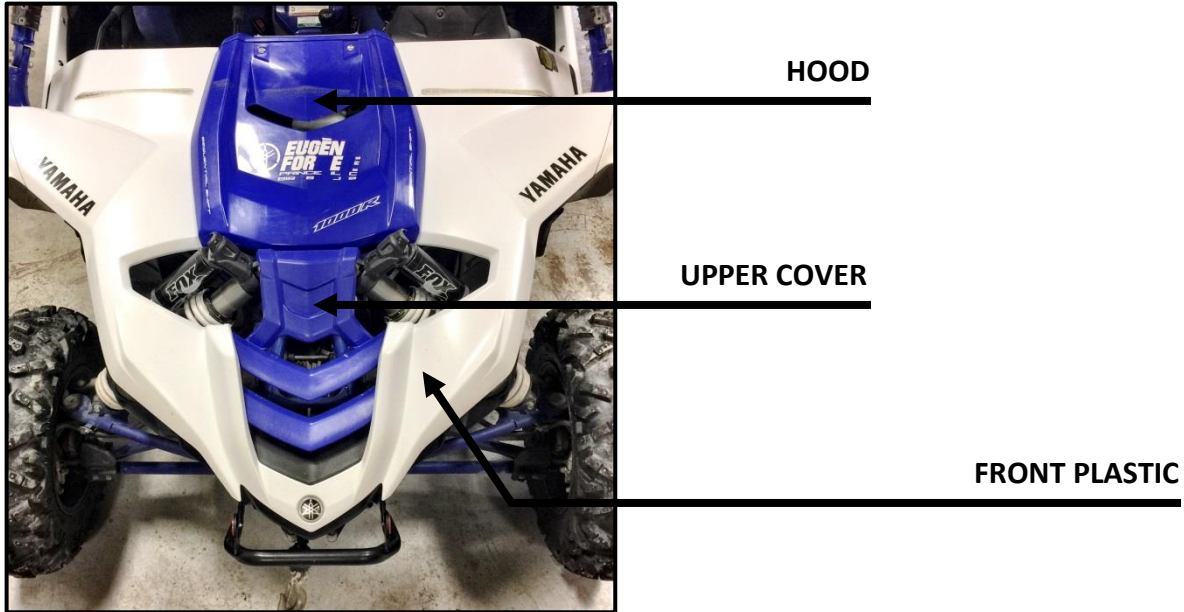
No warranty or representation is made as to this product's ability to protect user from severe injury or death.

The total liability of seller to user for all damages, losses, and causes of action, shall not exceed the total purchase price paid for the product that gives rise to the claim.

FRONT INSTALLATION INSTRUCTIONS

PREPARATION

- Using a jack under center of front end, lift until the front wheels leave the ground.
- You will need to remove the hood and the upper cover to install the brackets to the frame. To remove the upper cover, you will need to disconnect the front plastic to gain access to the hardware that secures the upper cover to the frame.



- Disconnect the top of the shocks from the frame shock mount.

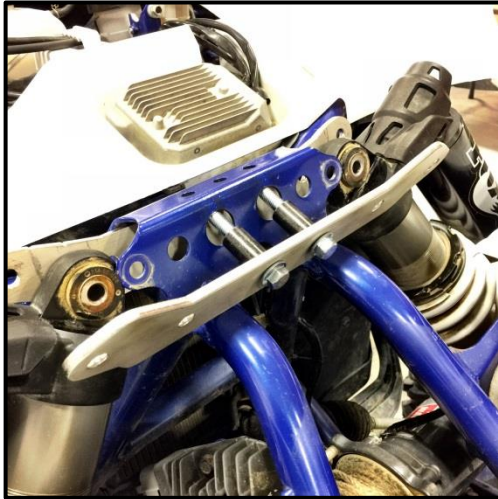


INSTALLATION

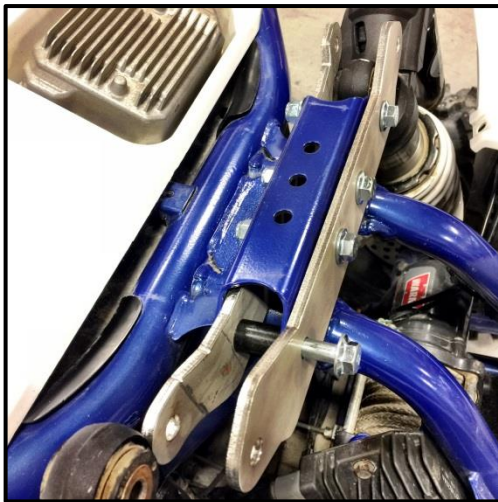
1. Insert the front bracket (B) inside of the frame shock mount, as shown below.



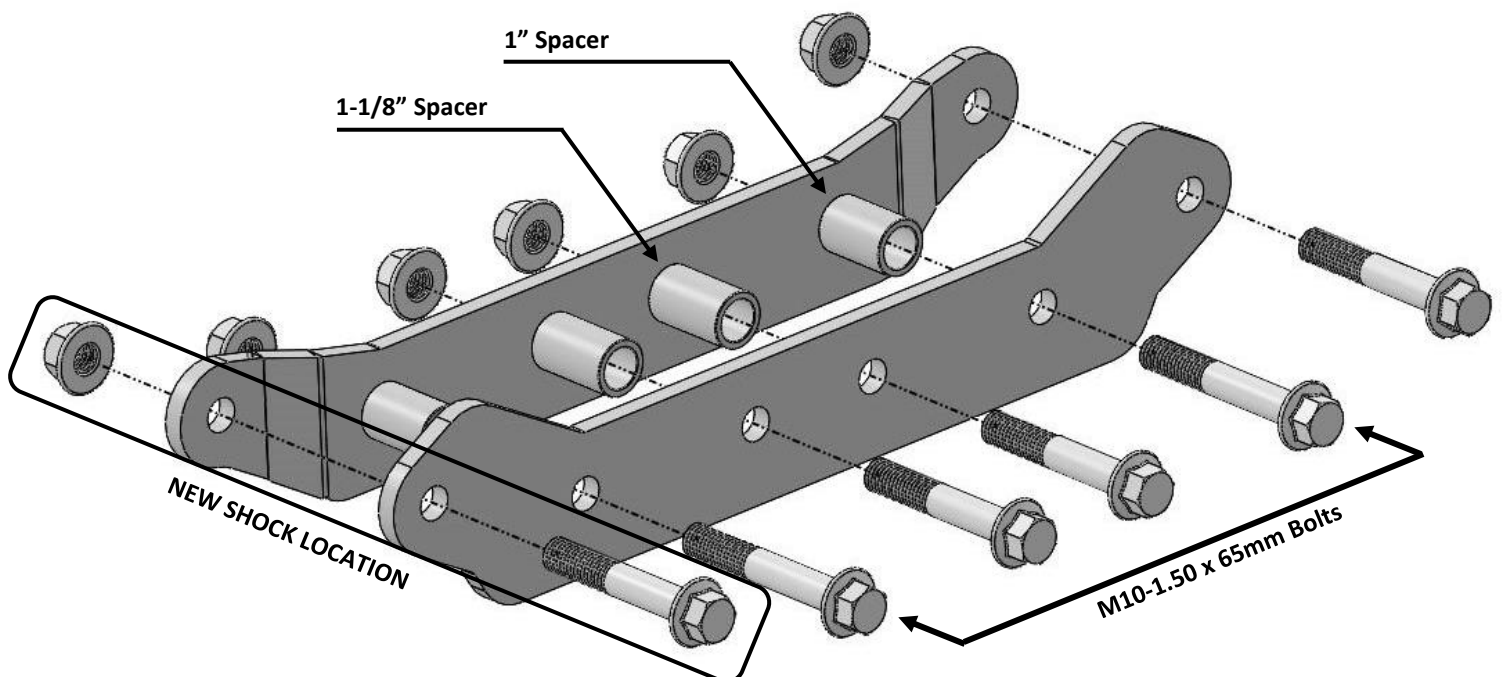
2. Then, insert the second front bracket (A) outside of the frame shock mount. Use M10-1.50 x 60mm hex bolts, 1-1/8" Lg. spacers and M10-1.50 lock nuts. See image below.



3. Install the brackets to the frame shock mount. Use M10-1.50 x 65mm bolts, 1" Lg. spacer and M10-1.50 lock nuts.



4. Connect the top of the shocks to the brackets. Use M10-1.50 x 60mm bolts and M10-1.50 lock nuts.
5. Tight all the hardware appropriately at this point.
6. Put the upper cover and the hood back on the UTV when the installation is finished.



REAR INSTALLATION INSTRUCTIONS

PREPARATION

- Using a jack under center of rear end, lift until the rear wheels leave the ground.
- Remove the wheels.
- Remove the shock. Save factory hardware.

INSTALLATION

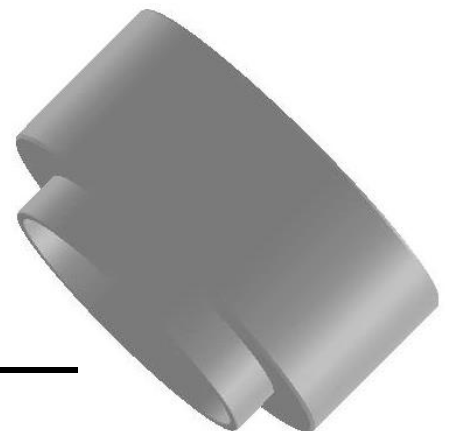
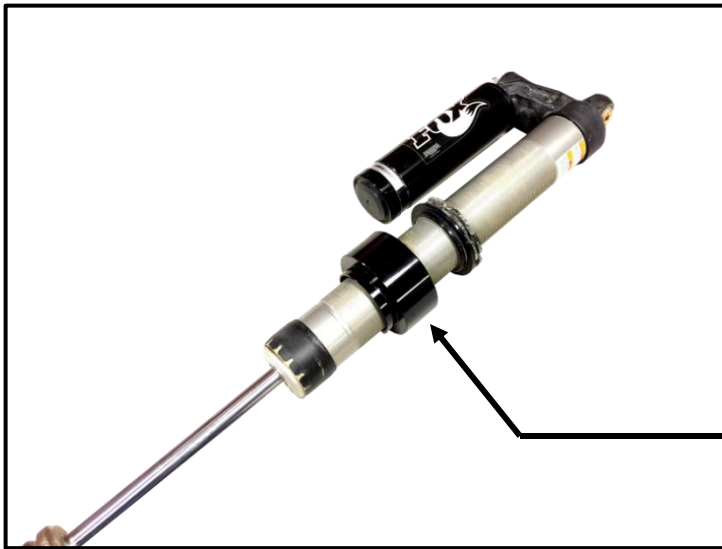
1. Measure and record the stock distance of the preload nut.
2. Loosen the preload nuts.

IMPORTANT: Make sure that the shock is clean and all the threads near the spanner nuts are free from dirt or other materials that can damage the threads when you are loosening or tightening the spanner nuts.

3. Remove the spring from the shock.



4. Install the lift spacer on the top of the shock, between the spring and the preload nut.



5. Put the spring back on the shock.
6. Re-install the retaining ring and reposition the preload nut at the distance that you recorded at the step 1.
7. Re-install the shock to the UTV using the factory hardware. Torque to factory specification.
8. Repeat the same steps for the opposite side.
9. Put the wheels back on the UTV when the installation is finished. Torque all lugs to factory specification.