

# FITTING INSTRUCTIONS

TO BE FITTED BY A QUALIFIED TECHNICIAN

## PADDOCK STAND BOBBINS *All Models*



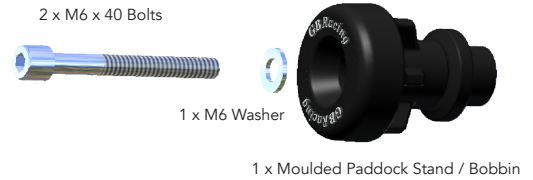
THIS SHEET INCLUDES FITTING INSTRUCTIONS FOR THE FOLLOWING PARTS:

Part Nos. BA12-6-GBR-SET / BA12-8-GBR-SET / BA12-10-GBR-SET / BA12-10-1-5-GBR-SET / BA12-6-RSV4-GBR-SET



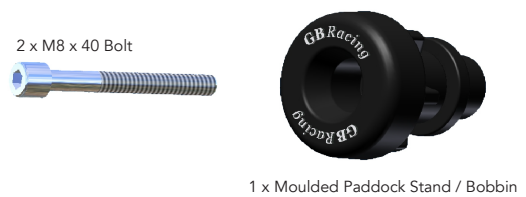
### PADDOCK STAND / BOBBIN SET PART NO. BA12-6-GBR-SET

- 1 Assemble M6 x 40mm Bolt & M6 Washer through the moulded bobbin.
- 2 Tighten bolts to swing arm boss, 8 Nm.  
DO NOT OVERTIGHTEN



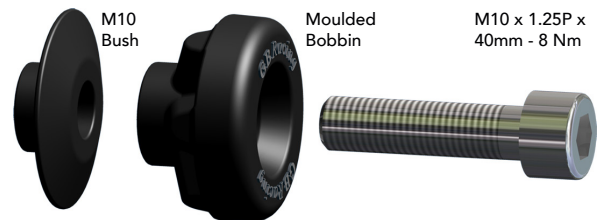
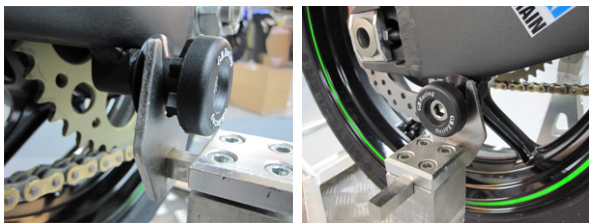
### PADDOCK STAND / BOBBIN SET PART NO. BA12-8-GBR-SET

- 1 Assemble M8 x 40mm Bolt through the moulded bobbin.
- 2 Tighten bolts to swing arm boss, 8 Nm.  
DO NOT OVERTIGHTEN



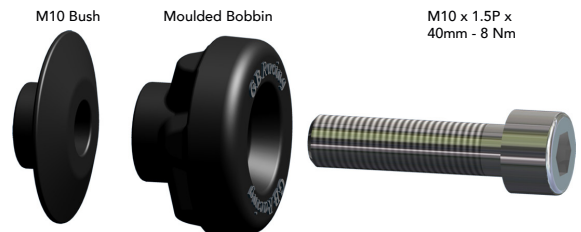
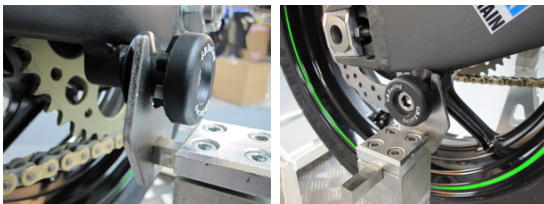
### PADDOCK STAND / BOBBIN SET PART NO. BA12-10-GBR-SET

- 1 Assemble the M10 Stainless Steel bolt through the moulded bobbin and the Black Anodised Bush.
- 2 Tighten bolts to the swing arm boss, 8 N/m.  
DO NOT OVERTIGHTEN.



### PADDOCK STAND / BOBBIN SET PART NO. BA12-10-1-5-GBR-SET

- 1 Assemble the M10 Stainless Steel bolt through the moulded bobbin and the Black Anodised Bush.
- 2 Tighten bolts to the swing arm boss, 8 N/m. DO NOT OVERTIGHTEN.



# FITTING INSTRUCTIONS

TO BE FITTED BY A QUALIFIED TECHNICIAN

## PADDOCK STAND BOBBINS *All Models*



### PADDOCK STAND / BOBBIN SET PART NO. BA12-6-RSV4-GBR-SET

- 1 Assemble M6 x 40mm Bolt & M6 Washer for the right hand side through the moulded bobbin.
- 2 Assemble M6 x 50mm Bolt & M6 washer for the left hand side through the moulded bobbin.  
This is to allow for the refitment of the original lower chainguard.
- 3 Tighten bolts to swing arm boss, 8 N/m.

