

## **35725** Honda CB750 Hornet Frontal Wing 2023> Fitting Instructions

### Kit Includes:

1.	X1	35725A	Hornet Frontal Wing (LHS)
2.	X1	35725B	Hornet Frontal Wing (RHS)
3.	X1	CFK35725A	Carbon Steel Bracket (A)
4.	X1	CFK35725B	Aluminium Bracket (B)
5.	X6	CBOLM50005	M5x12mm Button-Head Bolt
6.	X2	CBOLM50016	M5x15mm Flanged-Button Bolt
7.	X12	CWASM50002	M5 Flat Steel Washer
8.	X6	CNUTM50002	M5 Nyloc Nut

Use both an allen key / socket driver and an 8mm spanner to help tighten all fittings.

### Assembly Instructions

**Please note: Avoid overtightening all fittings once sufficient resistance is felt or, in the case of Nyloc nuts, once they 'lock out'.**

- Initially, all components should be assembled before they are fitted to the motorcycle to allow for small adjustments to be made to ensure optimum positioning. Please see 'FIG. 2' for visual reference.
- Please begin by assembling the bracket arm (Item 4) and both sides of the Frontal Wing (Items 1 & 2) using the required fittings. These consist of 1 x M5 button-head bolt (Item 5), 2 x M5 washers (Item 7) and 1 x Nyloc nut (Item 8) which should be fitted at the 4 x fixing points. 'FIG. 2' illustrates the order in which these fittings should be assembled. Before fully tightening, rotate both parts of the frontal wing until they come into contact with the bracket. Whilst gently pushing the frontal wing into the bracket, begin tightening the fittings fully. Please use 'FIG. 3' for reference.
- Locate the steel mounting bracket (Item 3) and use 1 x M5 button-head bolt (Item 5), 2 x M5 washers (Item 7) and 1 x Nyloc nut (Item 8) at the 2 x fixing points in order to assemble the frontal wing product. Slide the steel bracket (A) so that it replicates what is shown in 'FIG. 3'. Please take note of the orientation of the fittings, as this will make the finer adjustments easier once they have been fitted to the motorcycle.
- Locate both mounting points under the head unit of the CB750 Hornet and remove the OEM bolts. Using the M5 flanged-button bolts (Item 6), fit the pre-assembled components to the motorcycle by evenly threading the bolts until sufficient resistance is felt.
- Your Frontal Wing has now been installed. Should the positioning need minor alterations, simply loosen the bolts and adjust accordingly. Please note: loosening the fittings of the wing will allow it to be rotated. Loosening the bracket fittings will allow for forward, backward and small angular adjustments.

#### **Please Note:**

**We advise that all fixings are checked periodically.**

**FIG. 1**

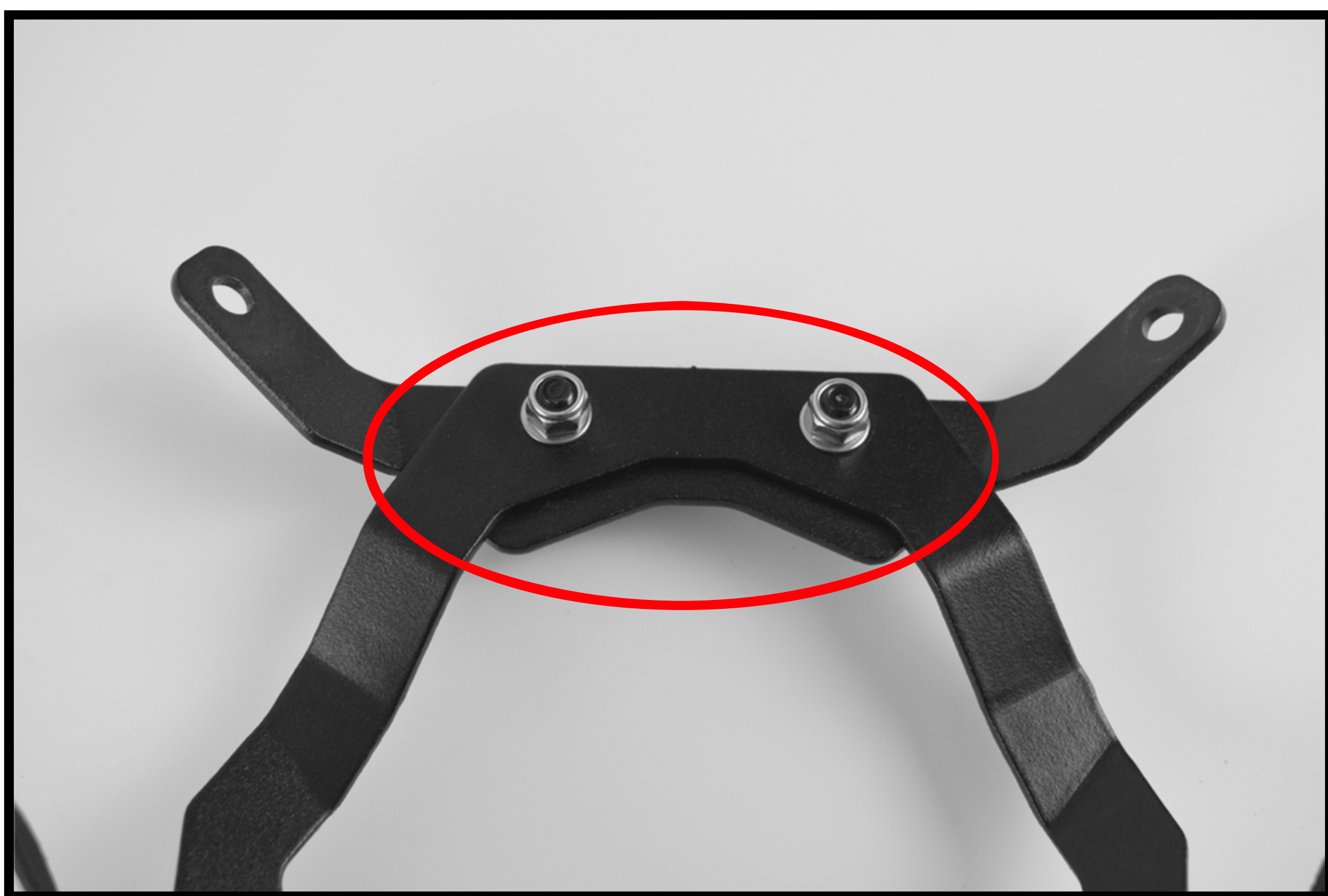
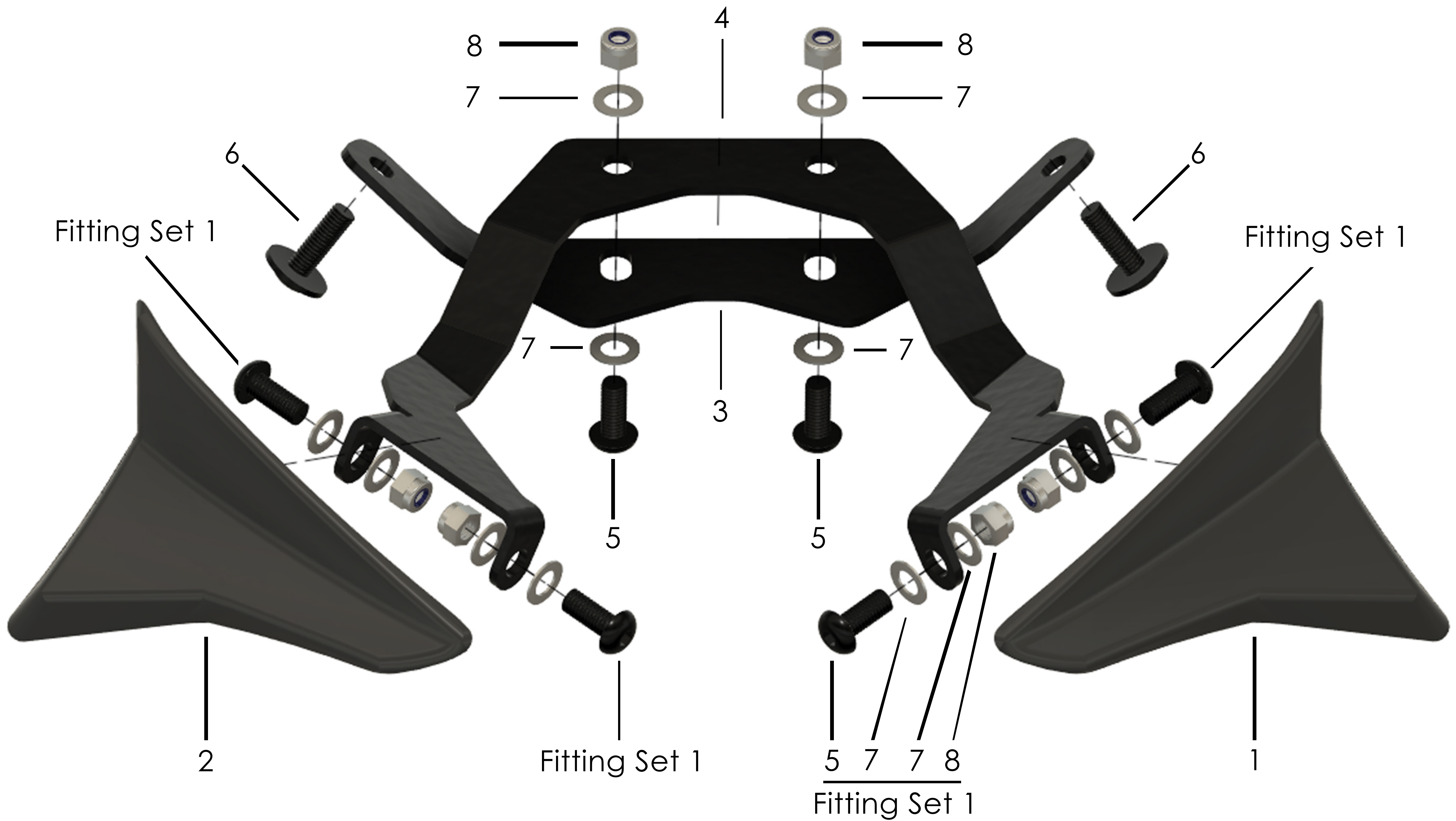


Any questions?  
[sales@pyramidmoto.co.uk](mailto:sales@pyramidmoto.co.uk)  
 +44 (0)1427 677990  
[www.pyramidmoto.co.uk](http://www.pyramidmoto.co.uk)

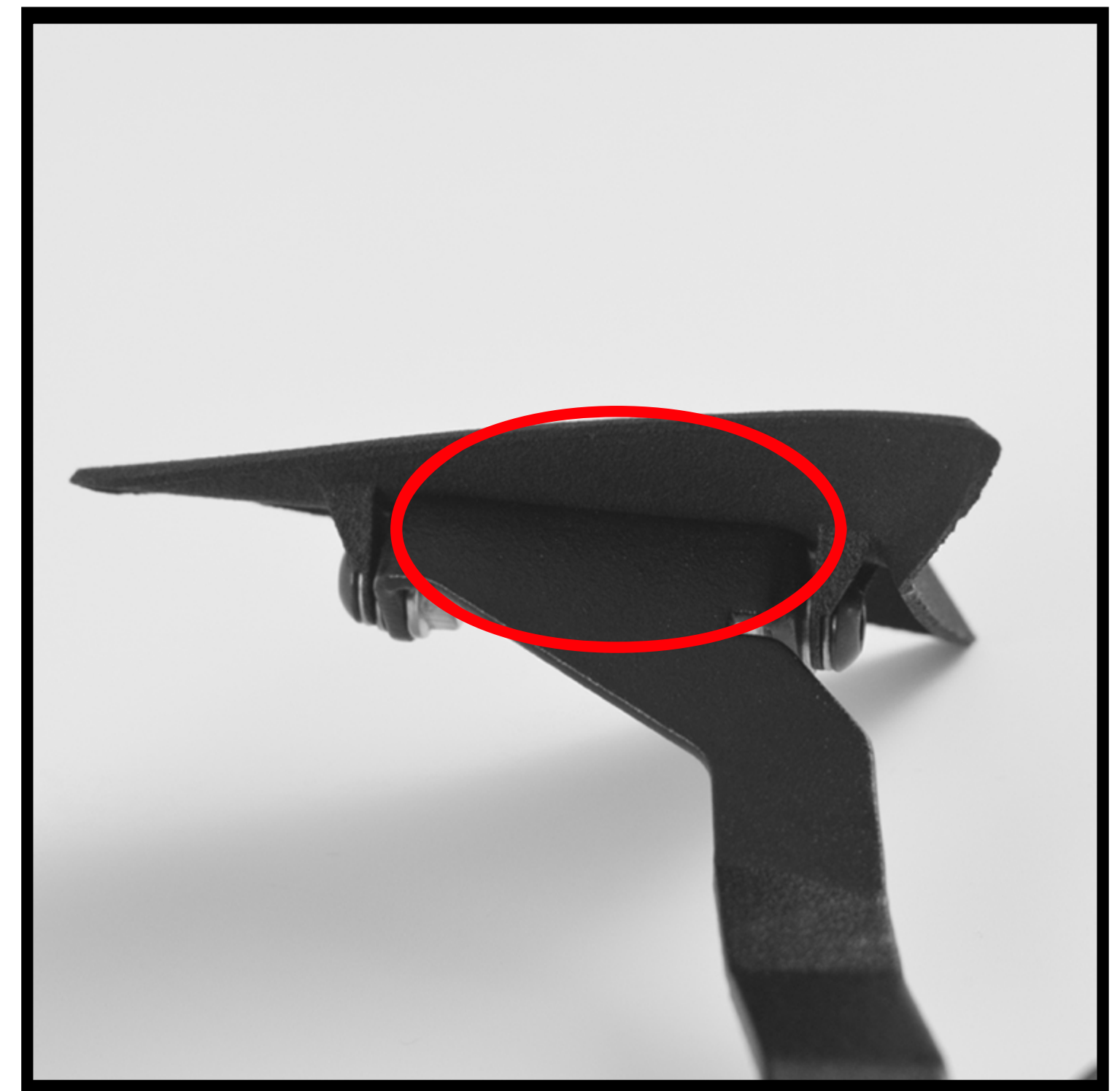


Follow us on social media and feel free to leave us a review!

**FIG. 2**



**FIG. 3**



The above images show the original positioning of the components during assembly of the Frontal Wing. In 'FIG. 3', the image on the left illustrates how the bracket should look when initially assembled. The image on the right illustrates how the wing should initially be assembled.

**FIG. 4**

'FIG. 4' illustrates the mounting position for the Frontal Wing on the CB750 Hornet head



Any questions?  
[sales@pyramidmoto.co.uk](mailto:sales@pyramidmoto.co.uk)  
 +44 (0)1427 677990  
[www.pyramidmoto.co.uk](http://www.pyramidmoto.co.uk)



Follow us on social media and feel free to leave us a review!