

34916M BMW R1300GS Splash Plate 2023> Fitting Instructions

Kit Includes:

1.	X1	34916M	R1300GS Splash Plate
2.	X2	CBOLM60007	M6 x 12mm Flanged-Button Bolt
3.	X2	CWASM60001	M6 Flat Steel Washer
4.	X2	CWASM60007	M6 Flat Rubber Washer
5.	X2	CNUTM60003	M6 Nyloc Nut

OEM Parts (From the Motorcycle):

6.	X2	OEM R1300GS	M6 OEM Number Plate Screw
7.	X2	OEM R1300GS	M6 OEM Number Plate Nut

An installation walk-through video can be found on our YouTube channel @pyramidmoto86!

Assembly Instructions

Please note: Avoid overtightening of all fittings once sufficient resistance is felt or, in the case of Nyloc nuts, once they 'lock out'.

- Begin by removing the number plate from the R1300GS. This is done by loosening the 2 x OEM number plate nuts (Item 7) and 2 x OEM number plate screws (Item 6). Please see 'FIG. 2' for reference.
- Once the number plate has been removed, offer the Splash Plate (Item 1) up to the tail tidy and identify the 2 x lower mounting points required to fit the plate. The holes are slotted to allow for adjustment of the plate. Using 1 x M6 bolt (Item 2), 1 x steel washer (Item 3) and 1 x Nyloc nut (Item 5) at each mounting point, mount the splash plate on the R1300GS. Please ensure the plate is level before fully tightening the fittings.
- Now refit the number plate, using the OEM screws (Item 6), OEM nuts (Item 7) and the 2 x M6 rubber washers (Item 4), through the aligning holes of the splash plate. Place the rubber washer between the number plate and the splash plate to help space the number plate off the splash plate bolt heads. Thread both screws evenly and align the number plate correctly before fully tightening.
- Your BMW R1300GS Splash Plate is now fully fitted.
- Please note : this splash plate has been designed to fit the standard UK number plate, as defined in current UK motorcycle regulations, measuring 230mm wide x 178mm high. Other number plate styles may still be compatible, but may not offer the desired effect. Please check your number plate size before fitting.

Please Note:

We advise that all fixings are checked periodically.

FIG. 1



Any questions?
sales@pyramidmoto.co.uk
+44 (0)1427 677990
www.pyramidmoto.co.uk



Follow us on social media and feel free to leave us a review!

34916M BMW R1300GS Splash Plate 2023>> Fitting Instructions

FIG. 2

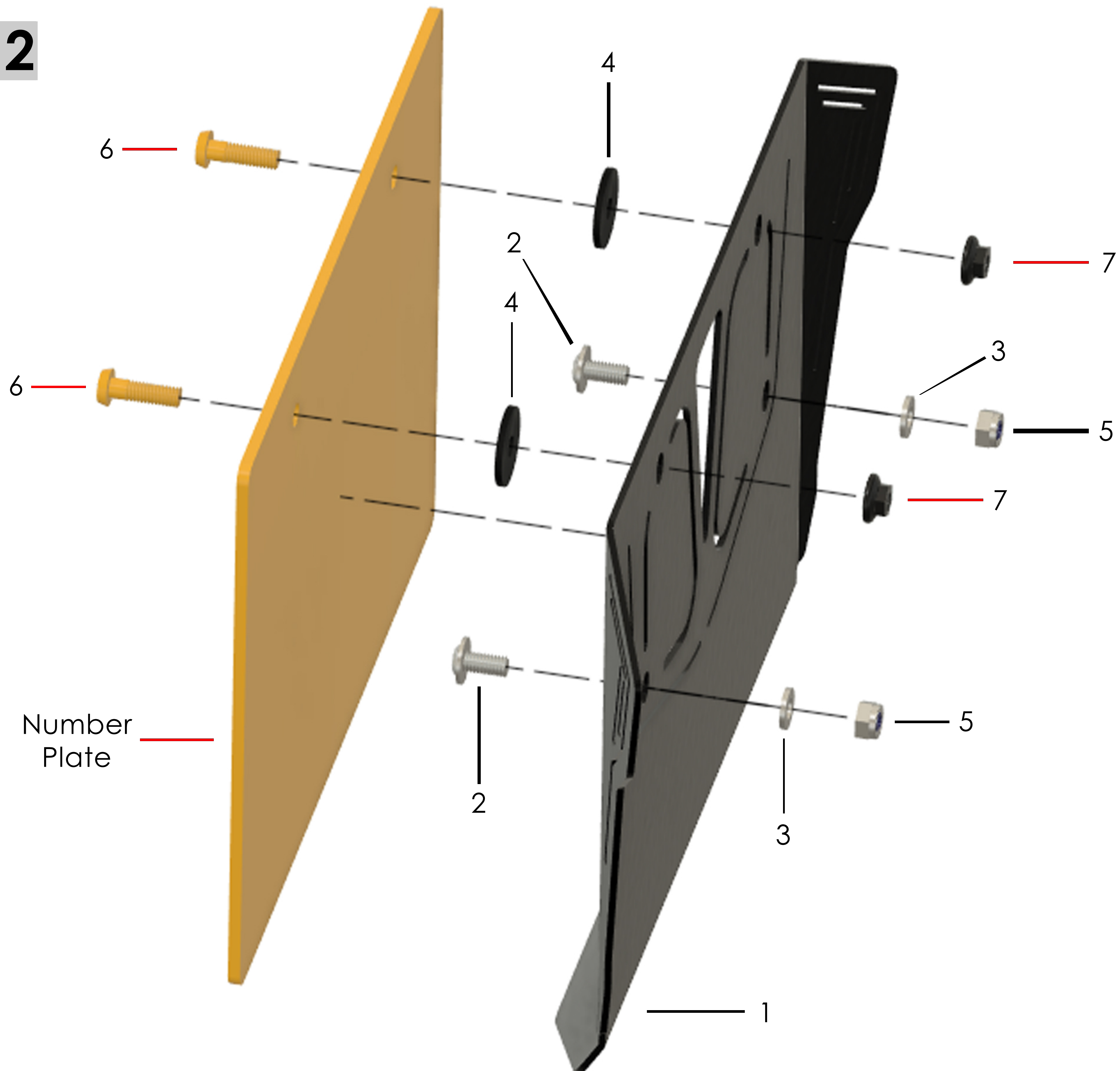


FIG. 3

'FIG. 3' illustrates the 4 x mounting locations used by the splash plate and the number plate. The upper mounting holes use the OEM fittings for the number plate, whilst the lower mounting holes use the fittings supplied with the Splash Plate.



Any questions?
sales@pyramidmoto.co.uk
 +44 (0)1427 677990
www.pyramidmoto.co.uk



Follow us on social media and feel free to leave us a review!