

## 23000 Z650RS Belly Pan Fitting Instructions

### Kit Includes:

|    |   |                         |
|----|---|-------------------------|
| 1X | C23000  | Moulding                |
| 4X | CFK23000                                      | Brackets (4 parts)      |
| 4X | CBOLM60008                                    | M6 x 16mm Flanged Bolts |
| 4X | CWASM60003                                    | M6 Washer               |
| 4X | CNUT0215 <small>Pre-fitted by Pyramid</small> | Aluminium Nut           |

**Fitting note:** attach fixings loosely at first - this aids alignment of the hole centres.

Attach the brackets provided using the OEM fittings as shown in the images below.

Attach the Pyramid belly pan to the brackets using the remaining fixings provided.

Fully tighten all mounting points. Ensure fixings are checked periodically.

### Any questions?

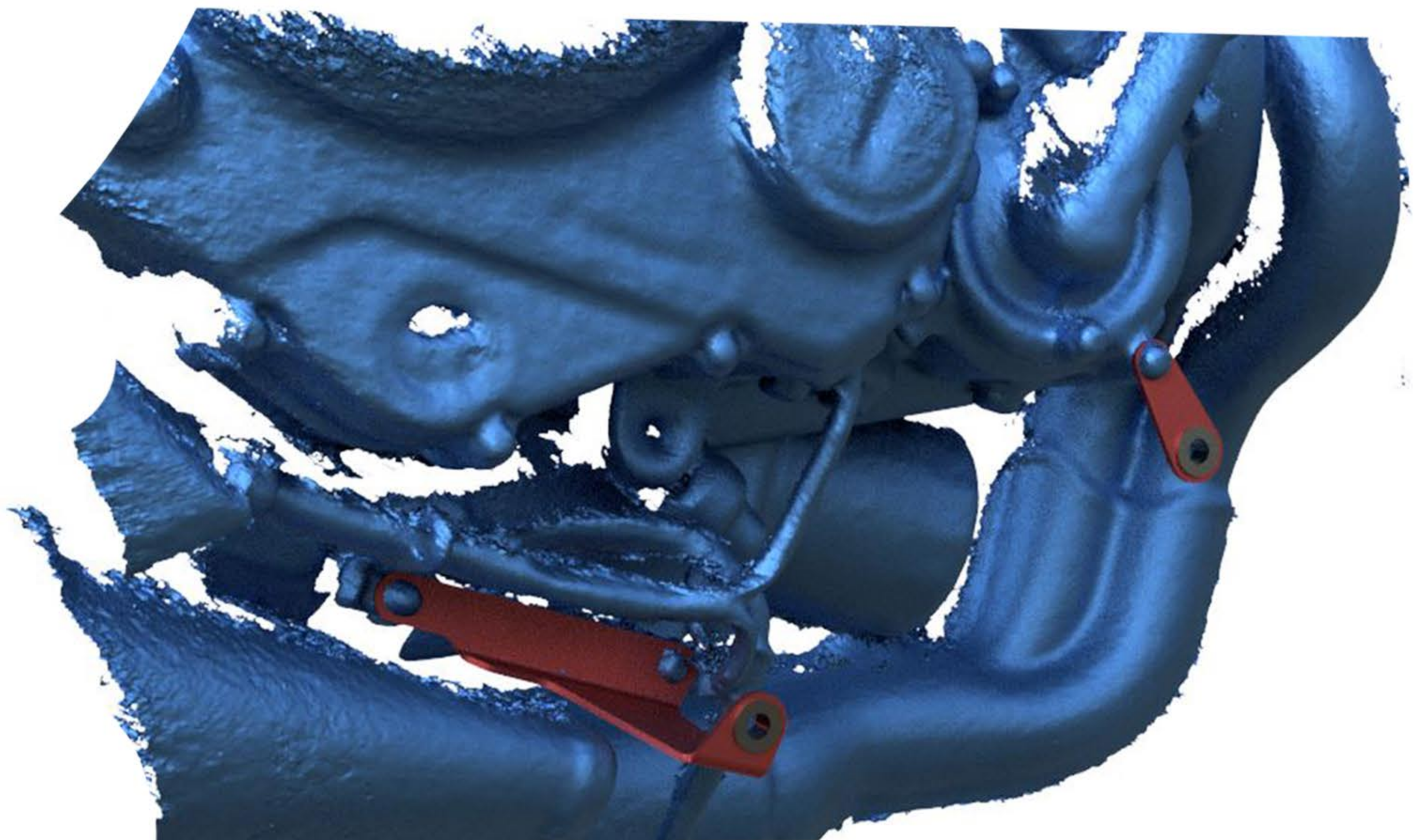
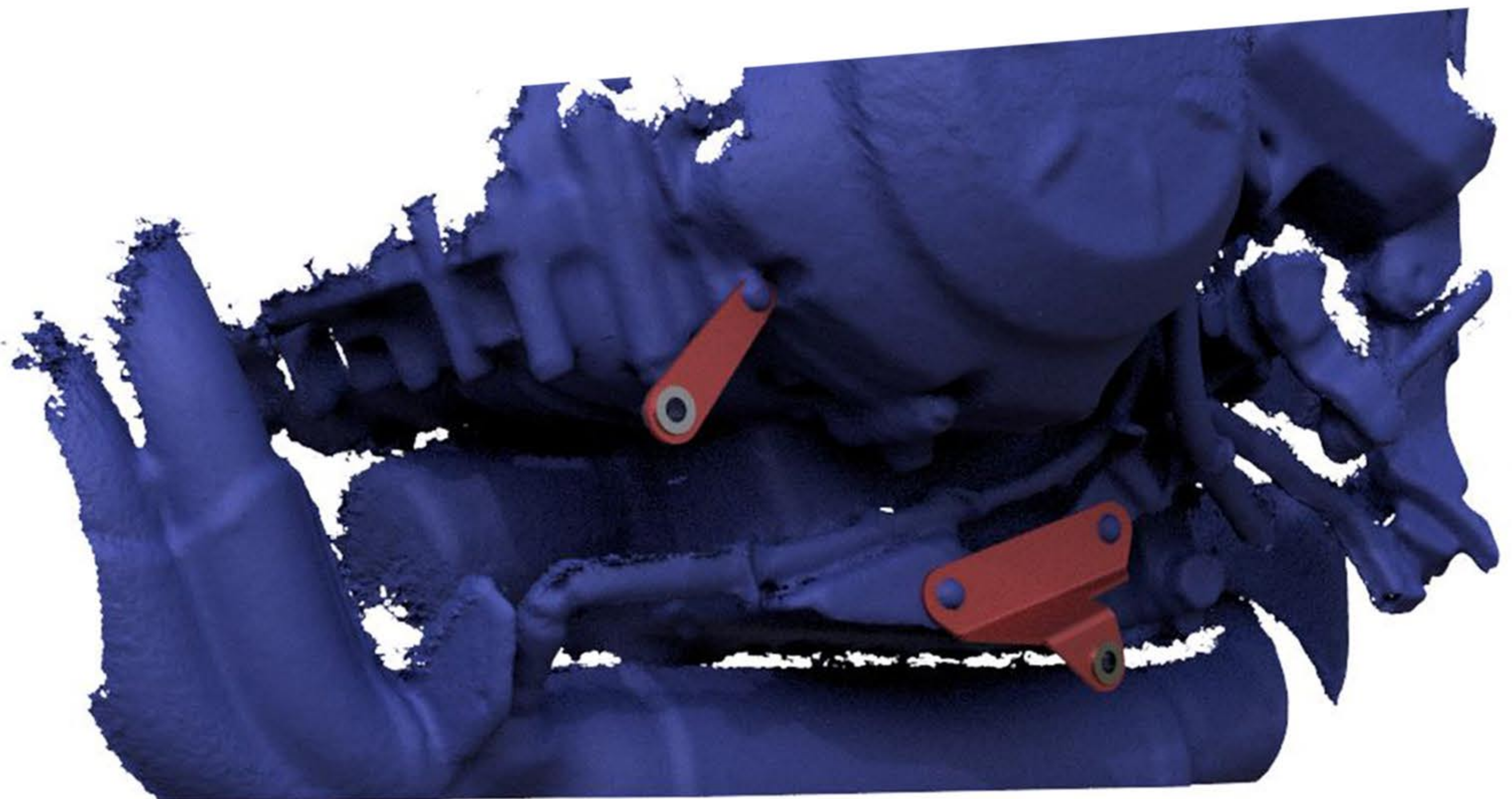
[sales@pyramid-plastics.co.uk](mailto:sales@pyramid-plastics.co.uk)

+44 (0)1427 677990

[www.pyramid-plastics.co.uk](http://www.pyramid-plastics.co.uk)



Follow us on social media and feel free to leave us a review!



# Z650RS