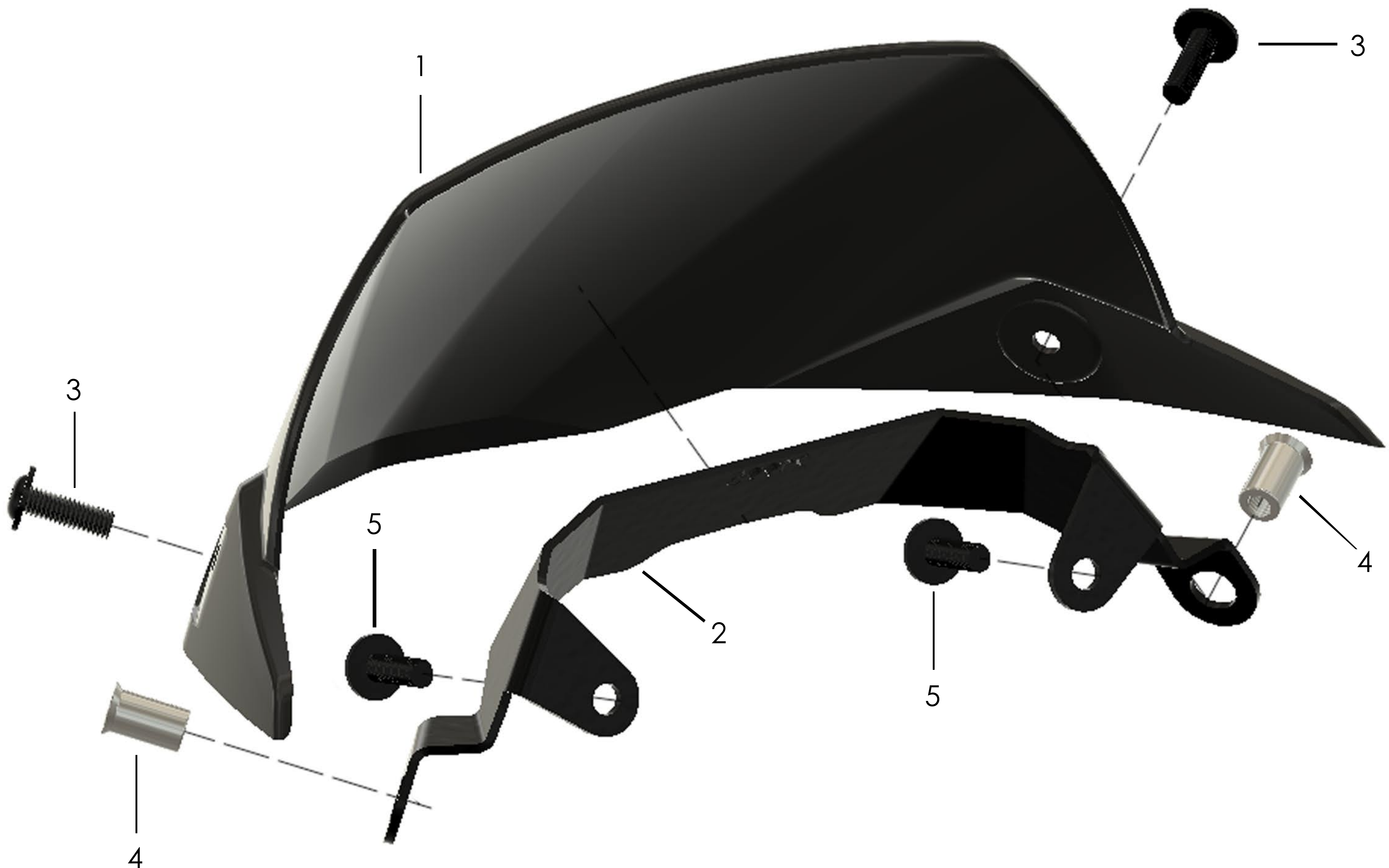


21995 Honda CB750 Hornet Fly Screen 2023> Fitting Instructions

The images below will assist with identification and application of the components provided in the fitting kit.

FIG. 3



'FIG. 3' identifies all screen components and mechanical fixings. Please note : The M6 rivet nuts (Item 4) are already located on the bracket (Item 2).



The thin foam strip shown in 'FIG. 4' can be placed along the upper inside edge of the screen, suitably preventing contact against the clocks.



FIG. 4

Any questions?
sales@pyramidmoto.co.uk
+44 (0)1427 677990
www.pyramidmoto.co.uk



Follow us on social media and feel free to leave us a review!

21995 Honda CB750 Hornet Fly Screen 2023> Fitting Instructions

Kit Includes:

1.	X1	21995	CB750 Fly Screen
2.	X1	CFK21995	Mounting Bracket
3.	X2	CBOLM60035	M6 x 16mm Button-Head Screw
4.	X2	CPNUTM60001	M6 Rivet Nut
5.	X1	CFOA0002	Foam Pad Strip (14cm)

Please note: The M6 Rivet Nuts are already pre-located on the supplied bracket, 'CFK21995'. It is also advisable to thread the corresponding screw (CBOLM60035) into the rivet nuts before fitting.

OEM Parts (From the Motorcycle):

6.	X2	OEM CB750	M6 x10mm Dome-Head Screw
----	----	-----------	--------------------------

Assembly Instructions

The Pyramid Fly Screen utilises the screws located beneath the clocks, as shown in 'FIG. 1'. The bracket will be completely obscured from view once the screen has been assembled.

- Remove the existing screws (Item 6) and re-insert them along with the mounting bracket (Item 2). Once both screws have been threaded loosely, they can then be tightened once there is sufficient resistance.
- This next step is optional. A thin foam strip (Item 5) has been provided for use on the underside of the screen to help avoid contact with the back of the clocks. You may wish to initially fit the screen and assess whether the protective foam pad is necessary before applying it.
- Having already threaded / unthreaded the screws (Item 3) into the rivet nuts (Item 4) as advised, locate the fixing holes on the screen (Item 1) over the bracket. Insert both M6 screws loosely before tightening to sufficient resistance.
- The screen has now been fully fitted, as shown in 'FIG. 2'.

Please Note: We advise that all fixings are checked periodically.

FIG. 1



FIG. 2



Any questions?
sales@pyramidmoto.co.uk
+44 (0)1427 677990
www.pyramidmoto.co.uk



Follow us on social media and
feel free to leave us a review!