

PYRAMID

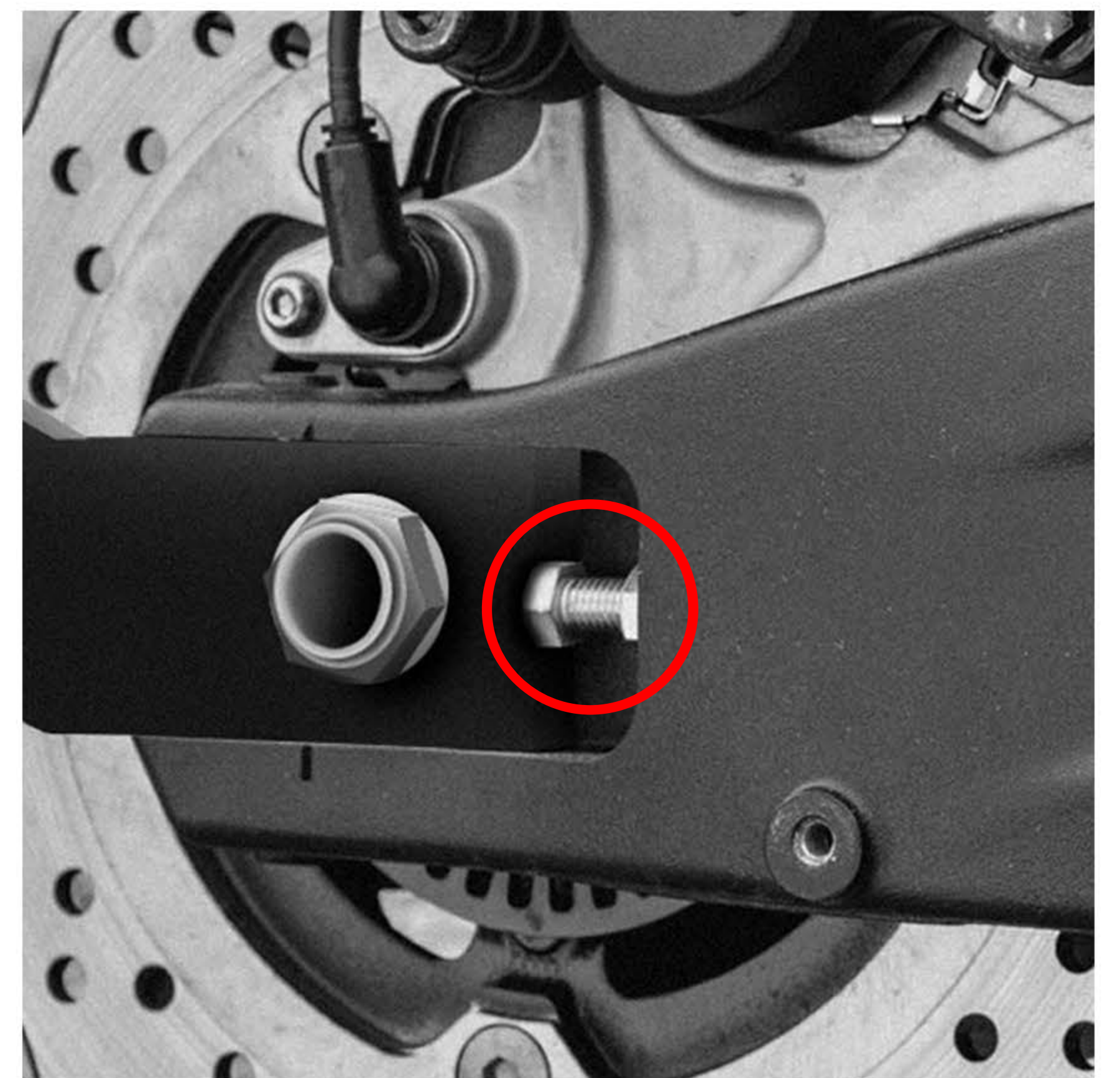
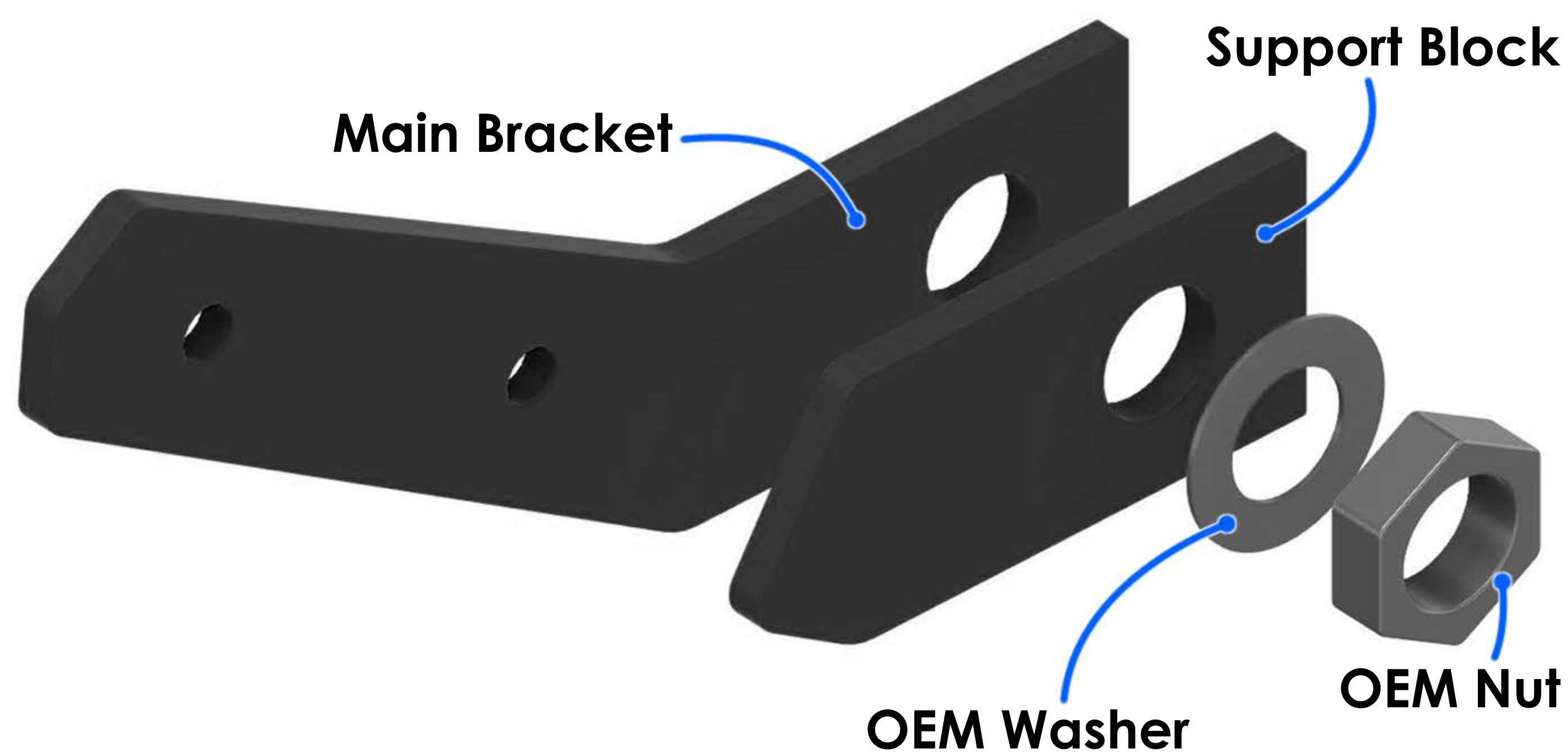
085200 Yamaha MT-09, Tracer 900 & XSR900 Spray Guard

Kit Includes:

Fibreglass Guard
Aluminium Bracket (2 parts)

Note: You are advised NEVER to attach additional items ANYWHERE on this guard – such as mounting plates, indicators, lights, licence plates, crash protectors, etc as this will invalidate the warranty.

- The assembled Fibreglass Guard and Aluminium Bracket are ready to install without the need for adjustment. A paddock stand is required as it is essential to reverse the wheel spindle (including chain tensioning block) so that the nut is on the right-hand side of bike – thus enabling fitment of the Spray Guard.
- The Aluminium Spray Guard Bracket now fits where the original chain tensioning block was previously situated. Please note that you will need to reuse the original washer in conjunction with the Spray Guard Bracket. **See pictures below for the fitting sequence.**
- Chain adjustment should allow 15-20mm of slack at the centre of the bottom chain run.
- The two screw adjusters left and right, should have equal lengths of exposed threads. **See red circle in picture below.**
- Finally torque the wheel nut to the correct value of **108 lb-ft (146Nm)**.



sales@pyramid-plastics.co.uk
+44 (0)1427 677990
www.pyramid-plastics.co.uk

let's
Ride