



071150 Honda NC750 X/S, NC700 S Hugger 2012> Fitting Instructions

Kit Includes:

1.	X1	C071150	NC750/NC700 Hugger Moulding
2.	X1	CFK071150A	Mounting Bracket A - Front RHS
3.	X1	CFK071150B	Mounting Bracket B - Rear RHS
4.	X1	CFK071150C	Mounting Bracket C - Rear LHS
5.	X6	CGROM60001	M6 Rubber Grommet
6.	X6	CSPAM60004	M6 Steel Collar
7.	X6	CBOLM60009	M6 x 20mm Flanged-Button Bolt
8.	X2	CWASM60001	M6 Steel Washer
9.	X2	CNUTM60003	M6 Nyloc Nut
10.	X1	CFOA0002	Foam Strip (20mm)
11.	X2	CNUTM60008	M6 Cage Nut
12.	X1	CWASM50003	M5 Steel Washer

OEM Parts (From the Bike):

13.	X1	OEM NC750/700	M5 x 25mm Flanged-Button Bolt
14.	X1	OEM NC750/700	M8 x 50mm Flanged-Hex Bolt

Assembly Instructions

Before proceeding with fitment of the hugger, you may find it easier to remove the exhaust cannister to access the mounting points on the 'RHS' of the motorcycle. This can be done at any point during the installation, so you don't need to worry about it just yet!

- Begin by installing the 6 x rubber grommets (Item 5) in all the pre-drilled holes in the hugger (Item 1). Once completed, insert the 6 x steel collars (Item 6) into the 6 x rubber grommets. Insert the M6 cage nuts (Item 11) into 'Bracket A' as shown in 'FIG. 1'.
- Locate 'Mounting Bracket C' and insert 1x M6 bolt (Item 7) in the hole furthest back on the LHS of the hugger, securing with 1 x M6 washer (Item 8) and 1 x M6 nyloc nut (Item 9). Tighten so that the bracket is secure, but can still be moved.
- Continue the installation by mounting 'Bracket A' (Item 2) and 'Bracket B' (Item 3). See 'FIG. 3' for reference.
 - To fix 'Bracket A', you will need to loosen the OEM M5 bolt (Item 13) which secures the brake hose pipe and subsequently place the bracket between the clamp faces, before re-inserting and loosely fastening. Include the M5 steel washer (Item 12) underneath the head of the bolt (this protects the OEM plastic moulding).
 - Before fitting 'Bracket B', please apply the foam strip (Item 10) to the underside face referenced in 'FIG. 1'. To mount 'Bracket B', you will need to remove the OEM M8 bolt (Item 14) from the rear brake caliper. **This is the stage where you may want to remove your exhaust cannister!** Re-insert the OEM M8 bolt, together with 'Bracket B' and loosely fasten to allow movement.
- Please remove the OEM chainguard from the LHS of the bike to provide access to the mounting points located on the swingarm. See 'FIG. 2' for reference.
- Proceed to slide the hugger over the rear wheel, ensuring the hugger encloses all mounting points and brackets internally. To secure 'Bracket B' to the hugger, please use 1 x M6 bolt, together with 1 x M6 washer and 1 x M6 nyloc nut. For all other fittings, please use the remaining 4 x M6 bolts.
- Once the hugger has been mounted in all locations, proceed to tighten all mounting points. Please avoid overtightening by stopping when sufficient resistance is encountered. For the OEM M8 bolt, please use a torque setting of 45Nm to re-tighten.

Any questions?

sales@pyramidmoto.co.uk

+44 (0)1427 677990

www.pyramidmoto.co.uk



Follow us on social media and
feel free to leave us a review!

Please Note: We advise that all fixings are checked periodically.

071150 Honda NC750 X/S, NC700 S Hugger 2012> Fitting Instructions

The images below will assist with identification and application of the components provided in the fitting kit.

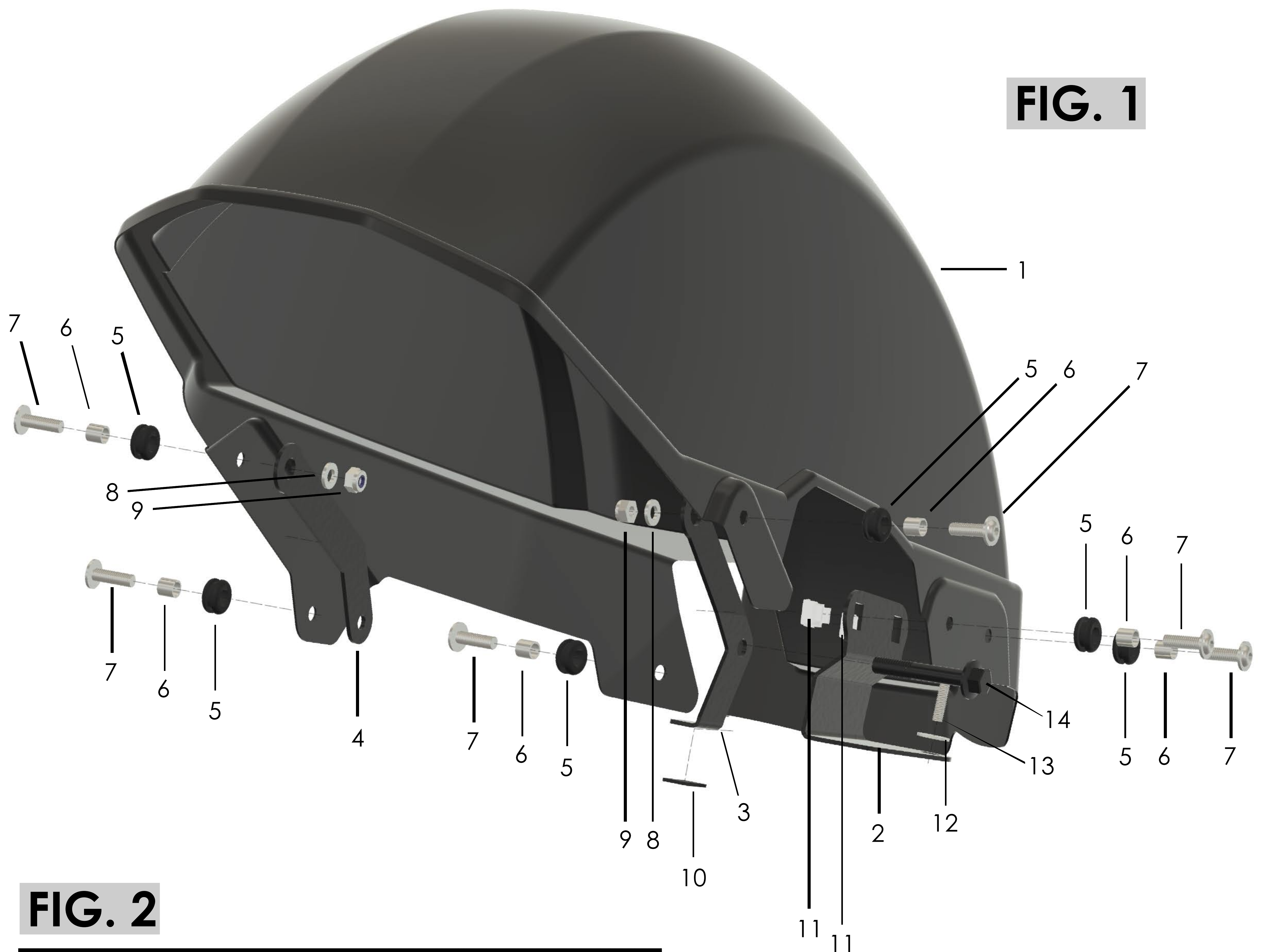


FIG. 2

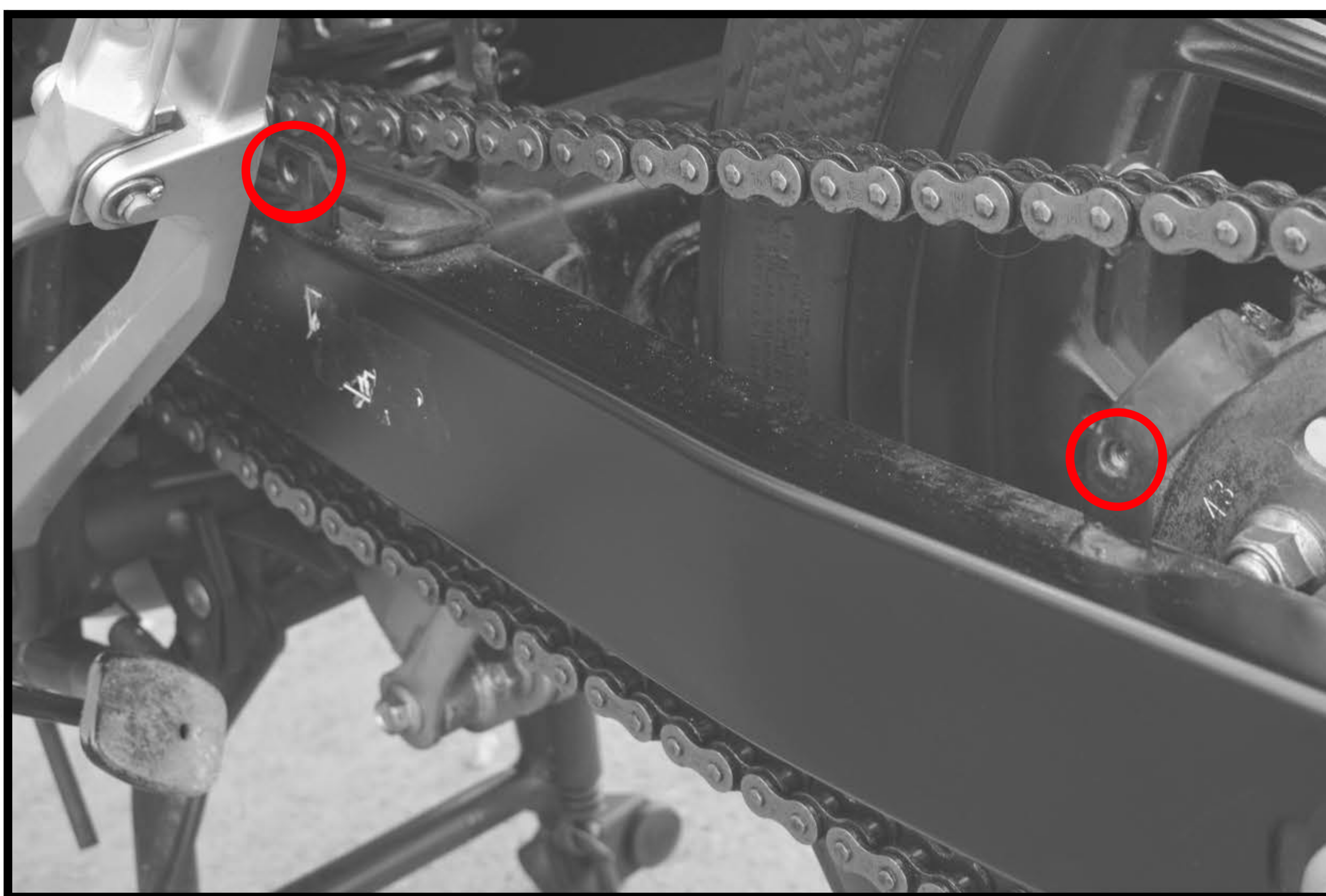
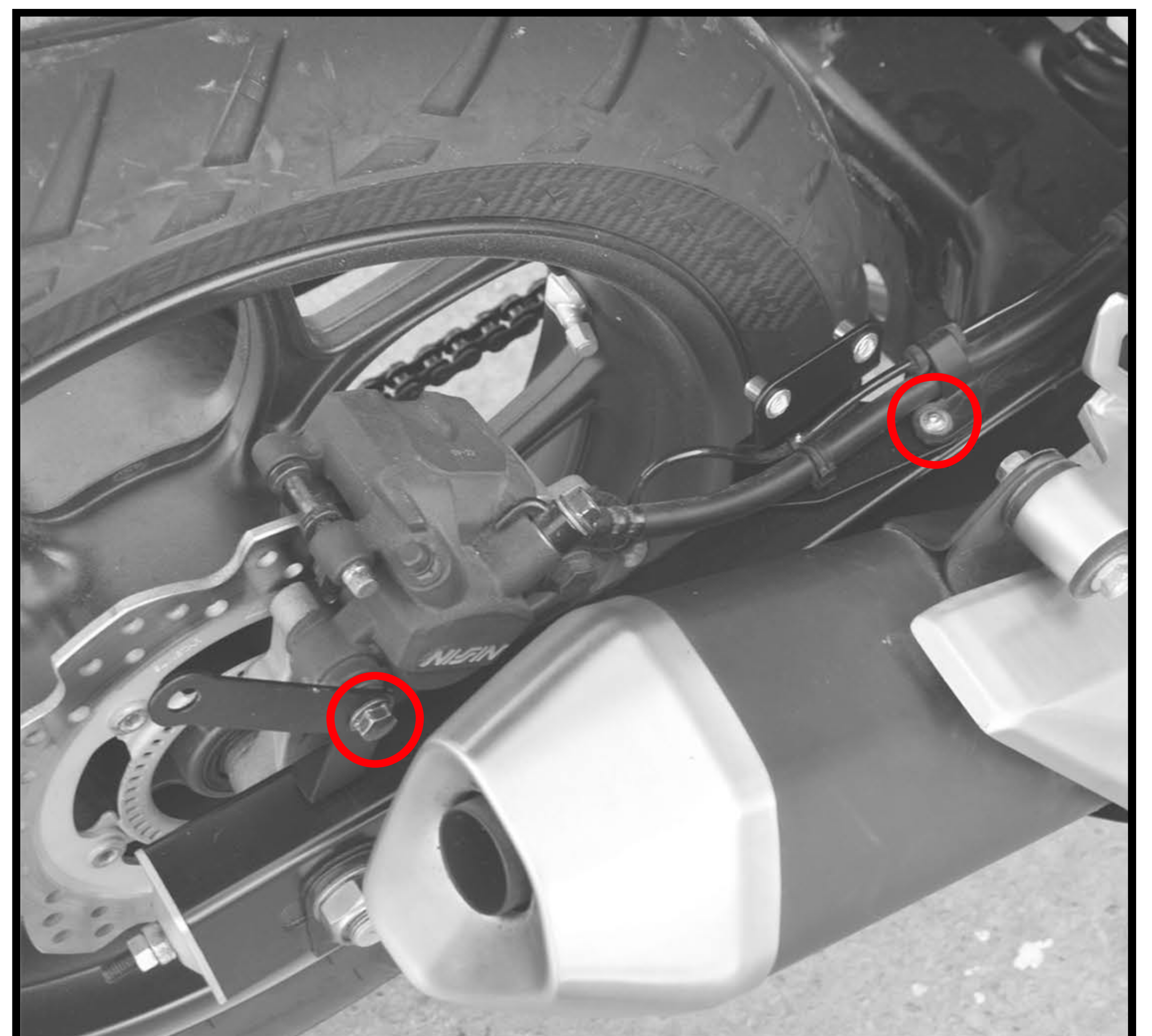


FIG. 3



Any questions?
sales@pyramid-plastics.co.uk
 +44 (0)1427 677990
www.pyramid-plastics.co.uk



Follow us on social media and
 feel free to leave us a review!