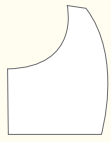


FACE MASK GUIDE:



X2 THICKER = OUTSIDE



X2 THINNER = LINER

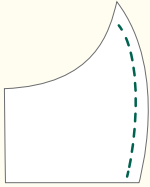
X2 ELASTIC - 6.5"

(Your kit will have either elastic OR ties.)

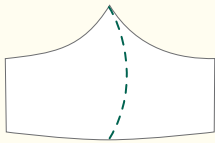
X4 TIES - 20" each

X1 PIPE CLEANER

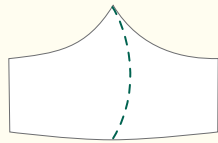
STEP 1



Stitch all pieces here - right sides together. Makes two full sides.



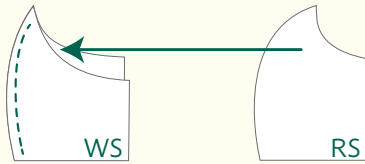
Outside Layer



Inside Layer

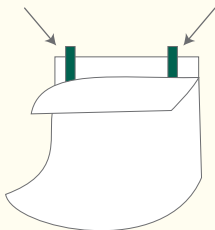
STEP 2

Flip outside (thicker) fabric out and iron seam and then place it inside liner fabric.



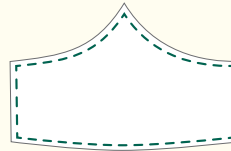
STEP 3

Place or pin ties/elastic between liner and outside layer.



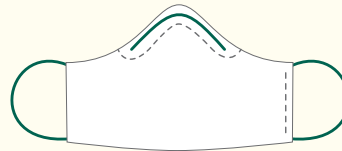
STEP 4

Sew all around the mask making sure to catch both pieces of fabric and elastic. Leave a gap to turn your mask right side out and then add the nose wire.



STEP 5

Turn mask right side out. Insert nose wire and encase it with a stitch. Hem the opening you left around the edge - leave open so a filter can be inserted if available.



STEP 6

Iron and DONE!

Abode

ARTISTS • ARTISANS • MAKERS

Alex Forby: 504.812.1259

#savannahfightingcovid

#abodemaskforce